

Forest Family

Quilt Design by Cyndi Hershey



Quilt size: approximately 42" x 51"

Featuring fabrics from Forest Family
by Deane Beesley Designs Inc. for P&B Textiles



BOUTIQUE

P&B Textiles • pbtex.com • 800-351-9087 • 208 Clock Tower Square, Portsmouth, RI 02871

Forest Family

Fabric collection by Deane Beesley Designs Inc. for P&B Textiles

Quilt design by Cyndi Hershey

Skill level: Advanced Beginner • Finished Quilt Size: approximately 42" x 51"

Quilt Yardages:

Fabric A: FFAM 4776 PA	1 panel
Fabric B: FFAM 4777 MU	5/8 yard
Fabric C: FFAM 4780 S	1/2 yard
Fabric D: FFAM 4781 LS	3/4 yard
Fabric E: FFAM 4782 S	7/8 yard
Fabric F: SUE5 301 SS	1/3 yard
Backing: FFAM 4777 MU suggested	3 yards
Batting:	50" x 59"

Cutting Instructions:

Please read all instructions carefully before beginning. Strips are cut across the width of fabric (perpendicular to selvages) unless otherwise stated. All seams are sewn with a 1/4" seam unless otherwise stated. Label all pieces.

From Fabric A:

1. Cut five 12 1/2" blocks centering design within each one.

From Fabric B:

1. Cut two 3 1/2" strips; subcut two 3 1/2" x 36 1/2" strips. (Horizontal Sashing)
2. Cut one 8 1/2" strip; subcut four 8 1/2" squares. (Blocks)

From Fabric C:

1. Cut five 2 1/2" strips. Use two strips to cut two 2 1/2" x 38 1/2" strips. Sew remaining strips together end to end with diagonal seams. Press seams open. From this pieced strip, cut two 2 1/2" x 47 1/2" strips. (Outer Border)

From Fabric D:

1. Cut four 1 1/4" strips; subcut four 1 1/4" x 36 1/2" strips. (Horizontal Sashing)
2. Cut four 1 1/2" strips. (Strip Set #1)
3. Cut two 1 1/2" strips. (Strip Set #2)
4. Cut five 1 1/2" strips. Use two strips to cut two 1 1/2" x 36 1/2" strips. Sew remaining strips together end to end with diagonal seams. Press seams open. From this pieced strip, cut two 1 1/2" x 45 1/2" strips. (Inner Border)

From Fabric E:

1. Cut four 1 1/2" strips. (Strip Set #1)
2. Cut two 1 1/2" strips. (Strip Set #2)
3. Cut one 2 1/2" strip; subcut four 2 1/2" squares and four 1 1/2" squares. (Border Corner Squares)
4. Cut five 2 1/2" strips. (Binding)

From Fabric F:

1. Cut two 4 1/2" strips; subcut sixteen 4 1/2" squares. (Blocks)

Piecing Instructions:

Blocks

1. Strip Set #1: Sew one 1 1/2" D strip with one 1 1/2" E strip along the long sides. Press toward E. Repeat to make four strip sets. Cut sets into sixteen 8 1/2" segments. (Figure 1)



Figure 1 Make 16.
2 1/2" x 8 1/2"
unfinished.

2. Strip Set #2: Sew one 1 1/2" D strip with one 1 1/2" E strip along the long sides. Press toward E. Repeat to make two strip sets. Cut sets into thirty-two 1 1/2" segments. (Figure 2)



Figure 2 Make 32.
1 1/2" x 2 1/2"
unfinished.

3. Sew two SS#2 segments together into a four-patch unit. Press seam open or to one side. Repeat to make sixteen units. (Figure 3)

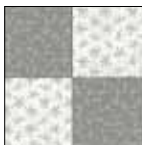


Figure 3 Make 16.
2 1/2" x 2 1/2"
unfinished.

4. Draw a diagonal line on the back side of each 4 1/2" F square. With right sides together, place one marked square in one corner of one 8 1/2" B square. Sew on drawn line and trim seam to 1/4". Press toward resulting triangle. Repeat in opposite corner of B square. Repeat for remaining corners of B square. Repeat to make four block center units. (Figure 4)



Figure 4 Make 4.
8 1/2" x 8 1/2"
unfinished.

5. Sew one SS#1 segment and two SS#2 segments together into a row. Press toward SS#1. Repeat.
6. Sew one SS#1 segment to both sides of one block center unit to create a row. Press toward SS#1.
7. Sew Step 5 and Step 6 rows alternately together to complete one Block A; press. Repeat to make four blocks. (Figure 5)



Figure 5 Make 4.
12 1/2" x 12 1/2"
unfinished.

Quilt Assembly: (Refer to the Quilt Diagram)

1. Sew one 1 1/4" x 36 1/2" D strip to both sides of one 3 1/2" x 36 1/2" B strip. Press toward D. Repeat to make two horizontal sashing units. (Figure 6)



Figure 6 **Make 2. 5" x 36 1/2" unfinished.**

2. Sew two 12 1/2" A squares alternately with one pieced block into a row. Press toward A. Repeat to make two rows.
3. Sew two pieced blocks alternately with one 12 1/2" A square into a row. Press toward A.
4. Sew rows alternately together inserting one horizontal sashing unit between each row. Press toward the sashing units.
5. Sew one 1 1/2" x 45 1/2" D strip to both sides of the quilt center. Press toward D. Sew one 1 1/2" E square to both

ends of each 1 1/2" x 36 1/2" D strip. Press toward D. Sew one pieced strip to the top and bottom of the quilt center. Press toward D.

6. Sew one 2 1/2" x 47 1/2" C strip to both sides of the quilt. Press toward C. Sew one 2 1/2" E square to both ends of each 2 1/2" x 38 1/2" C strip. Press toward C. Sew one pieced strip to the top and bottom of the quilt. Press toward C.

Finishing:

1. Prepare backing using two widths with horizontal seam/s. Press seams open. Trim backing to 50" x 59".
2. Layer quilt, batting, and backing. Baste layers together.
3. Quilt as desired.
4. Trim layers even with quilt top.
5. Join five 2 1/2" E binding strips with diagonal seams. Press seams open. Attach binding using your favorite method.
6. Make a label and sew to the back of the quilt.



Quilt Diagram

Forest Family

Fabric Collection by Deane Beesley
Designs Inc. for P&B Textiles



FFAM 4776 PA*



FFAM 4777 MU*†



FFAM 4777 Y



FFAM 4778 MU



FFAM 4783 J



FFAM 4779 MU



FFAM 4780 K



FFAM 4780 O



FFAM 4780 S*



FFAM 4781 LS*



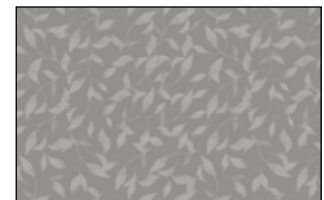
FFAM 4781 LY



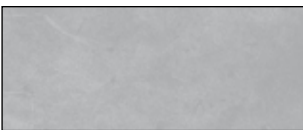
FFAM 4781 R



FFAM 4782 G



FFAM 4782 S*



SUE5 301 SS*



*Fabrics used in quilt
†Backing