

MAYWOOD  STUDIO

AMERICAN BEAUTY QUILT



American Beauty Quilt by Robyn Pandolph Saxty

Featuring the American Beauty collection by Robyn Pandolph Saxty
from Maywood Studio.

58" x 73"

maywoodstudio.com

AMERICAN BEAUTY

by robyn pandolph sixty



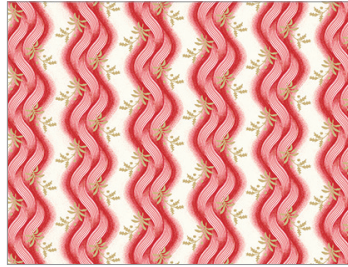
Fabric 1
10252-T



Fabric 2
10256-E



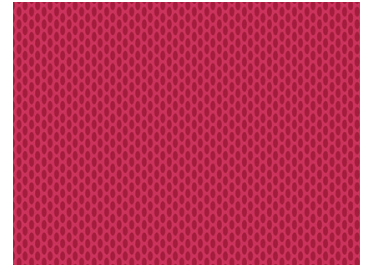
Fabric 3
10252-R



Fabric 4 plus Binding
10255-R



Fabric 5
10254-R



Fabric 6
10256-R



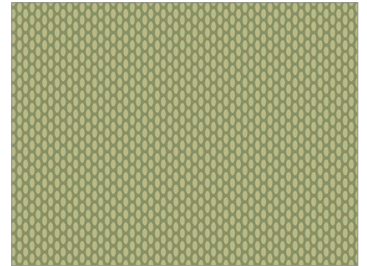
Fabric 7
10253-R



Fabric 8
10251-R



Fabric 9
10254-G



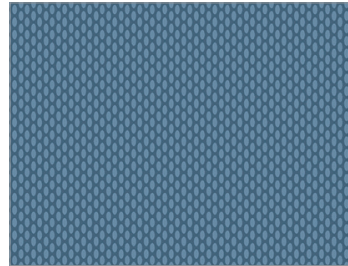
Fabric 10
10256-G



Fabric 11
10251-B



Fabric 12
10253-B



Fabric 13
10256-B



Fabric 14
10250-B



Fabric 15
10254-B



Fabric 16
10255-B



Fabric 17
10252-B

WOF - Width of Fabric
LOF - Length of Fabric
RST - Right Sides Together
HST - Half Square Triangle
FG- Flying Geese

Note: Cutting instructions include letters marked with * such as *L, which indicates that size piece is cut in more than one fabric.

MAYWOOD  STUDIO

Maywood Studio makes every effort to make sure our patterns are accurate.
Check for updates at maywoodstudio.com/projects

Fabric Requirements

Fabric 1	10252-T	1 yard
Fabric 2	10256-E	1 yard
Fabric 3	10252-R	1/2 yard
Fabric 4 plus binding	10255-R	1-3/4
Fabric 5	10254-R	3/8 yard
Fabric 6	10256-R	3/8 yard
Fabric 7	10253-R	1/2 yard
Fabric 8	10251-R	3/8 yard
Fabric 9	10254-G	1/8 yard
Fabric 10	10256-G	1/8 yard
Fabric 11	10251-B	1/8 yard
Fabric 12	10253-B	1/8 yard
Fabric 13	10256-B	1/8 yard
Fabric 14	10250-B	3/4 yard
Fabric 15	10254-B	1/8 yard
Fabric 16	10255-B	1/8 yard
Fabric 17	10252-B	3/4 yard
Backing	44/45" wide	

Cutting

Cutting for the Houses

Fabric 1

B/C: Cut (4) 4" squares and then cut on the diagonal once.

Cut (2) 2" x WOF strips into

D: (4) 2" x 5-1/2" Door rectangles

D1: (4) 1-3/4 x 5" Chimney rectangles

E: (8) 2" x 4-1/2" Window rectangles

F: Cut (1) 1-3/4" x WOF strip into (8) 1-3/4" x 2-1/4" Chimney rectangles

Houses: Fabrics 5, 6, 7, 8

Roof Section

A: (1) 3-1/2" x 11" rectangle

Chimney section

G: (2) 1-1/2" x 1-3/4" rectangles

Door

H: (1) 1-1/2" x 4" rectangle

I: (2) 1-1/2" x 5-1/2" rectangles

Windows

J: (2) 1-1/2" x 4-1/2" rectangles

J1: (1) 2" x 4-1/2" rectangle

K: (2) 1-1/2" x 7" rectangle

Cutting for Everything Else

Fabric 1

Cut (4) 2-1/2" x WOF strips

L: Subcut (64) 2-1/2" squares for Flying

Geese units

Cut (2) 6-1/2" x WOF strips into:

(1) 6-1/2" x 26-1/2" lower vine appliqué base

(1) 6-1/2" x 36-1/2" upper vine appliqué base

Fabric 1 (con't)

Cut (4) 2-1/2" x WOF strips into:

(2) 2-1/2" x 26-1/2" sashing top/bottom

(3) 2-1/2" x 22-1/2" house sashing

(2) 2-1/2" x 10-1/2" house strips

Fabric 2

M: Cut (3) 3-1/2" x WOF strips into (33) 3-1/2" squares. You need 5 more - cut from N. See below.

***N:** Cut (6) 4" x WOF strips into (55) 4" squares

***M:** From the leftover cut (5) more 3-1/2" squares for a total of 38.

Fabric 3

***N:** Cut (2) 4" x WOF strips into (11) 4" squares

***O:** From leftover cut (6) 3-1/2" squares.

Fabric 4

***O:** Cut (1) 3-1/2" x WOF strip into (8) 3-1/2" squares

***N:** Cut (1) 4" x WOF strip into (9) 4" squares

Cut LOF: (1) 8-1/2" x 43-1/2" lower flag rectangle

Cut LOF: (1) 2-1/2" x 30-1/2" upper flag rectangle

Binding: Cut (7) strips 2-1/4" x WOF

Fabric 5

***N:** Cut (1) 4" x WOF strip into (9) 4" squares HST

***O:** Cut (1) 3-1/2" x WOF strip into (8) 3-1/2" squares FG

Fabric 6

***N:** Cut (1) 4" x WOF strip into (9) 4" squares

***O:** Cut (1) 3-1/2" x WOF strip into (6) 3-1/2" squares

Follow appliqué template instructions to cut (16) appliqué berries

Fabric 7

***N:** Cut (1) 4" x WOF strip into (8) 4" squares

***O:** Cut (1) 3-1/2" x WOF strip into (6) 3-1/2" squares

Fabric 8

***N:** Cut (1) 4" x WOF strip into (9) 4" squares

***O:** Cut (1) 3" x WOF strip into (6) 3-1/2" squares

Fabric 9

Follow appliqué template instructions to cut leaves.

Fabric 10

Follow appliqué template instructions for 1/4" wide stem and to cut leaves.

Fabrics 11, 12, 13, 16

***P:** Cut (1) 2-1/2" x WOF strip into (5) 2-1/2" x 4-1/2" rectangles.

Fabric 14

Fussy cut (9) 6-1/2 wreath squares

Fabric 15

Cut (1) 2-1/2" x WOF strip into (6) 2-1/2" x 4-1/2" rectangles

Fabric 17

Cut (1) 6-1/2" x 30-1/2" flag rectangle

Cut (5) 2-1/2" x WOF strips.

Piece together and cut into:

(1) 2-1/2" x 50-1/2" bottom border strip

(1) 2-1/2" x 48-1/2" top border strip

(1) 2-1/2" x 71-1/2" side border strip

(5) 2-1/2" x 4-1/2" rectangles

American Beauty Quilt Instructions

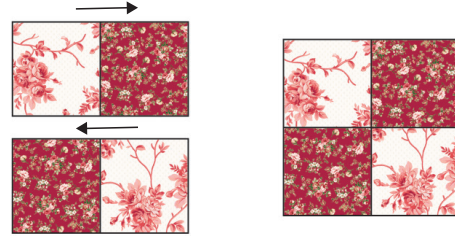
Please read all instructions before you begin. Seam allowance is 1/4. Fabric is abbreviated as 'F' - for example, F1 refers to Fabric 1. Press in the direction of arrows.

Use the check boxes to mark each completed step.

Four Patch Units

Gather (6) F3, (8) F4, (8) F5, (6) F6, (6) F7, (6) F8 - **3-1/2" squares**

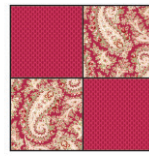
1. Arrange the fabrics into sets of pairs as illustrated. *Note: follow the cover illustration for the stripe direction or make it your own.



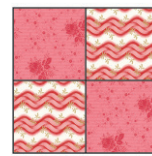
F3, F7 - Make 1
6-1/2" x 6-1/2"

2. Sew the pairs together into sets. Press to nest.

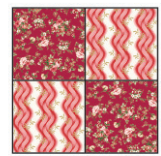
3. Sew the sets together into units. Press. Unit measures 6-1/2" x 6-1/2".



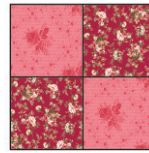
F6, F8
Make 3



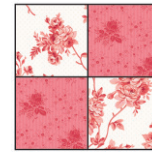
F4, F5
Make 2



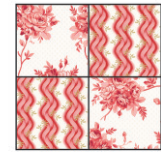
F4, F7
Make 1



F5, F7
Make 1



F3, F5
Make 1



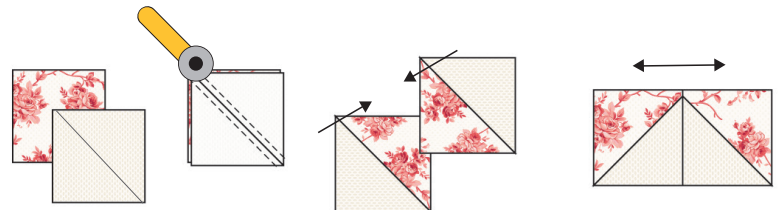
F3, F4
Make 1

Triangle Square-Pairs

Gather (55) F2, (11) F3, (9) F4, (9) F5, (9) F6, (9) F8 - **4" squares**

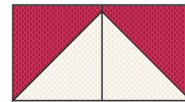
Make 2-at-a-time Triangle Squares.

1. Draw a diagonal line from corner to corner on the wrong side of an F2-N square.

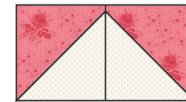


F2, F3-Make 11
6-1/2" x 6-1/2"

2. Place the F2-N square, RST, over a F3-N square. Stitch 1/4" away from either side of the marked line. Cut on the marked line. Press away from F2. Trim to 3-1/2" square.



F2, F6
Make 9



F2, F5
Make 9



F2, F8
Make 9

3. Arrange the triangle squares into pairs as illustrated. Sew into units. Press open. Unit measures 6-1/2" x 6-1/2".



F2, F7
Make 8



F2, F4
Make 9

Star/Wreath Sections

Gather (9) F14 wreaths, (38) F2-M squares, the Four Patch units and the Triangle Square-Pairs.

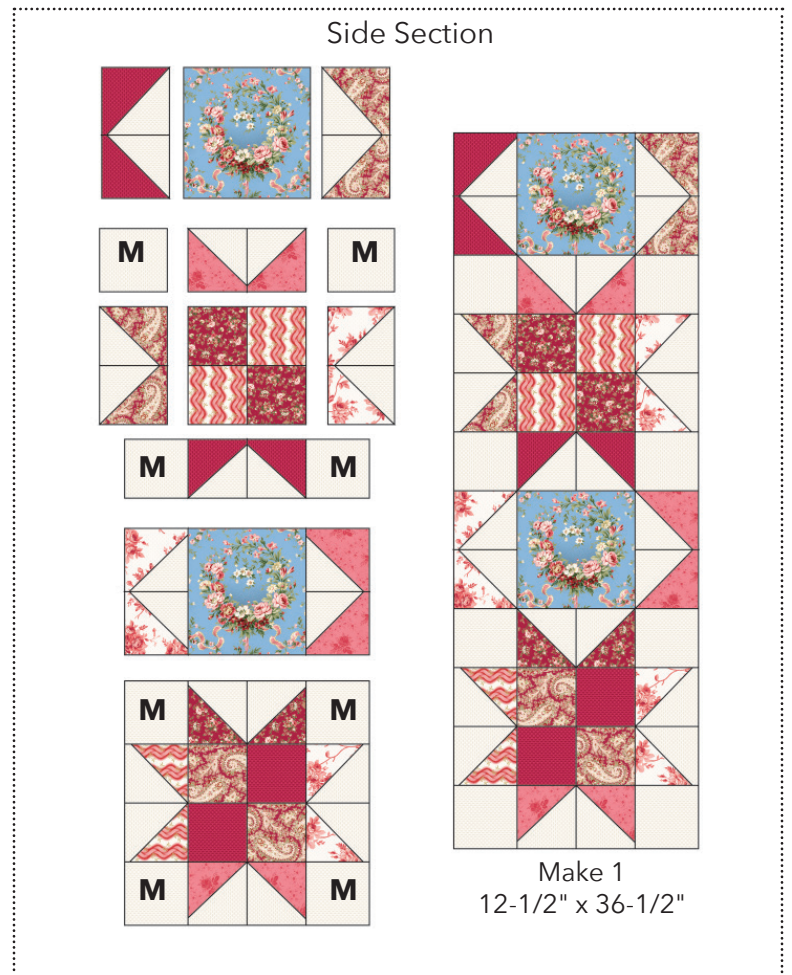
Side Section: Follow the illustration to the right.

- ❑ 1. On two wreaths: sew a Triangle Square Pair to either side of (2) F14-wreaths. Press toward wreaths.
- ❑ 2. On two Four Patch units: Sew a Triangle Square Pair to either side of a Four Patch unit. Press. Then sew the F2-M squares to either side of the Triangle Square pairs. Press.
- ❑ 3. Sew the two wreath sections and two star blocks together into the Side Section. Press.
- ❑ 4. Lay the remaining F14-wreaths, Four Patch units, Triangle Square-Pairs, and F2-M squares into rows as illustrated below.

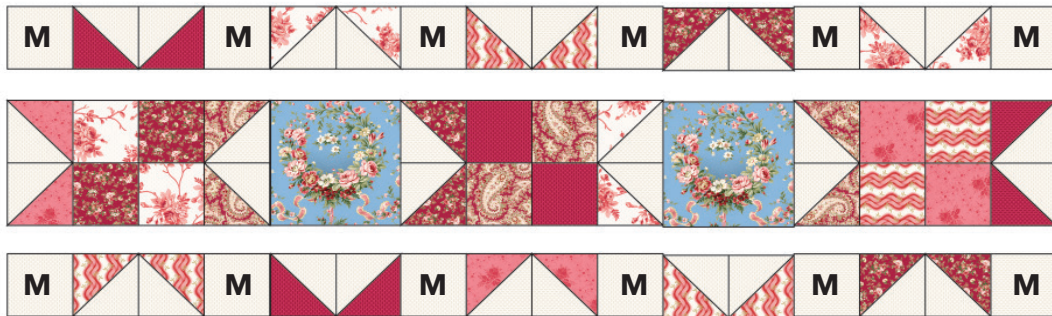
Upper/Lower Sections: Follow the illustration below

- ❑ 5. Sew the units into rows. Sew row to row. Press.

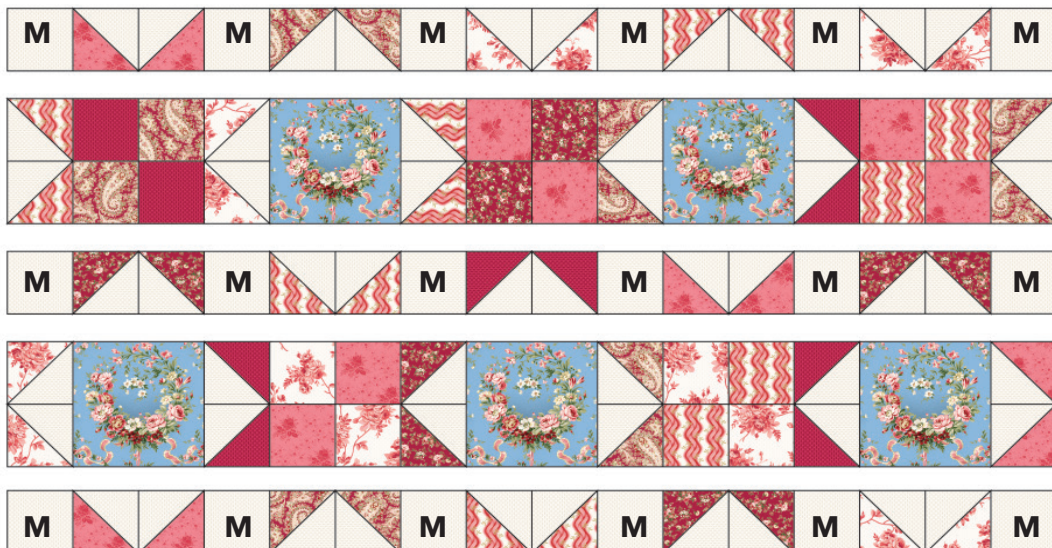
Make one Upper section and one Lower section



Upper Section



Upper Section



House Blocks

Gather the House Pieces from F1, 5, 6, 7, 8

Roof Section

❑ The Roof Paper Piece template is on p.10. Copy at 100% to make 4 roof sections and piece using your preferred paper-piecing method.

Chimney Section

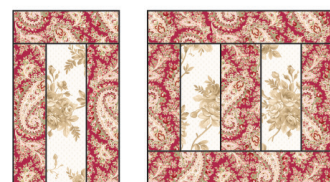
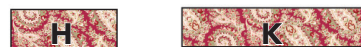
- ❑ 1. Sew a F8-G rectangle to either side of a F1-D1 rectangle. Press.
- ❑ 2. Sew a F1-F rectangle to either side of the Step 1 unit. Press.
- ❑ 3. Repeat steps 1-2 using F5, 6, and 7 house pieces
- ❑ 4. Sew the Roof sections to the Chimney Sections.

House Door and Window Sections

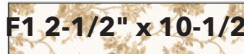
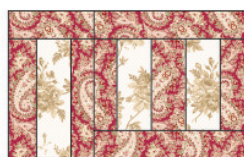
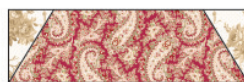
- ❑ 5. Door: Sew a F8-I rectangle to either side of a F1-D rectangle. Press. Then sew a F8-H rectangle to the top of the unit. Press.
- ❑ 6. Windows: Sew the F8-J, F1-E, and F8-J1 rectangles together as illustrated. Press. Sew a F8-K rectangle to the top and bottom of the unit. Press.
- ❑ 7 Sew the door and window units together. Press.
- ❑ 8. Repeat steps 5-7 using the F5, 6, and 7 house pieces.
- ❑ 9. Sew the chimney/roof sections to the door/window units. Press.
- ❑ 10. Sew a F1 (2-1/2" x 10-1/2") strip to the bottom of the F6 and F8 houses. Press.



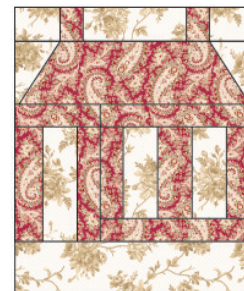
Chimney Section



House Door and Window Sections

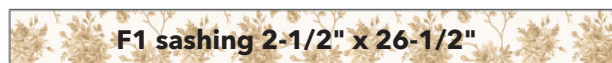


F1 2-1/2" x 10-1/2"



House Center Section

- ❑ 11. Sew the houses into columns as illustrated to the right.
- ❑ 12. Sew the F1 (2-1/2" x 22-1/2") sashing to join the columns. Press.
- ❑ 13. Sew the F1 top and bottom sashing to the step 12 unit. Press. House Center Section measures 26-1/2" x 26-1/2".



Flying Geese Units

Gather (64) F1-L squares and the F11, F2, F13, F15, F16, and F17-P rectangles

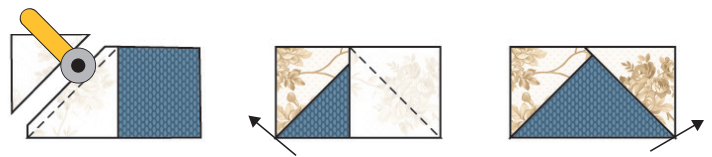
❑ 1. Mark diagonal lines from corner to corner on the wrong side of the F1-L squares.

❑ 2. Place an F1-L square, RST, on the left side of a F13-P rectangle. Sew on the marked line. Trim 1/4" away from the sewn line. Press.

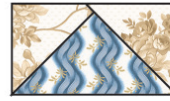
❑ 3. Place an F1-L square, RST on the right side of the step 2 unit. Sew on the marked line. Trim 1/4" away from the sewn line. Press. Make 5. Unit measures 2-1/2" x 4-1/2".

❑ 4. Repeat steps 1-3 to make the Flying Geese units illustrated to the right.

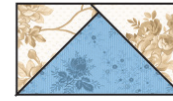
❑ 5. Sew the Flying Geese units into two rows as illustrated. Press in one direction. The top row has 15 units and the side row has 16 units.



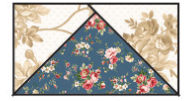
F1, F13 - Make 5
2-1/2" x 4-1/2"



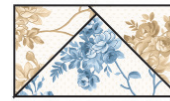
F1, F16
Make 4



F1, F15
Make 6



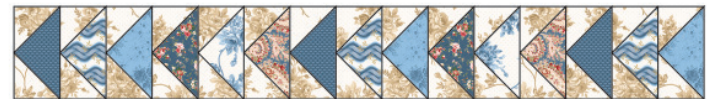
F1, F12
Make 5



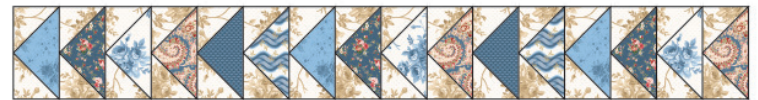
F1, F17
Make 5



F1, F11
Make 5



Top Row



Side Row

House Center Section Round 2

Gather the House Section, Flying Geese Units, and the F1 6-1/2" x 26-1/2" sashing with the *vine appliqué.

❑ 1. Sew the Vine and Heart appliqué to the F1 base pieces. *The appliqué template and Robyn's instructions for how to appliqué the vine and hearts are on p.11-12.

❑ 2. Sew the F1 6-1/2" x 26-1/2" section with the vine appliqué to the bottom of the House Center section. Press.

❑ 2. Sew the side Flying Geese row to the House Center section. Press.

❑ 3. Sew the top Flying Geese row to the House Top Section. Press.

Con't on p.8



House Center Section Round 2 Con't.

- ❑ 1. Sew the F1 6-1/2" x 36-1/2" section with the vine and heart appliqué to the right side of the center house section. Press towards F1.
- ❑ 2. Sew the Side Stars and Wreath section from p.5 to the Step 1 section. Press towards F1.



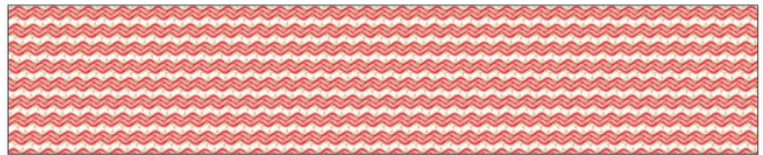
Top Assembly

- ❑ 1. Sew the F4 and F17 Upper Flag sections together. Press.



F4 Upper Flag: 2-1/2" x 30-1/2"

F4 Lower Flag 8-1/2" x 43-1/2"

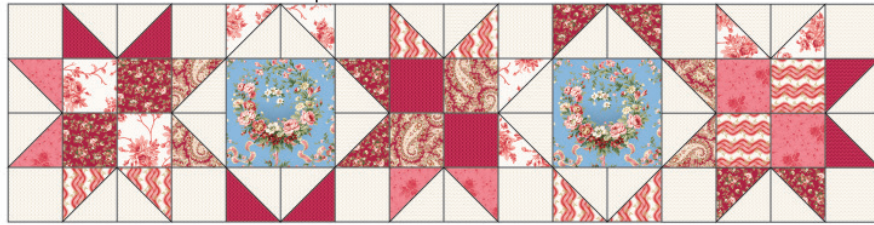


- ❑ 2. Sew the step 1 unit to the F4 Lower Flag Section. Press.
- ❑ 3. Sew the Top Star/Wreath row to the top of the House Center section. Press.
- ❑ 4. Sew the Lower Star/Wreath section to the bottom of the House Center section. Press.
- ❑ 5. Sew the F17 borders to the quilt top in this order:
 - a. F17 bottom border
 - b. F17 side border
 - c. F17 top border.
- ❑ 6. Sew the Flag Section to the side of the quilt top.
- ❑ 7. Appliqué the Medium Heart once the quilt top has been assembled. See front cover for placement.

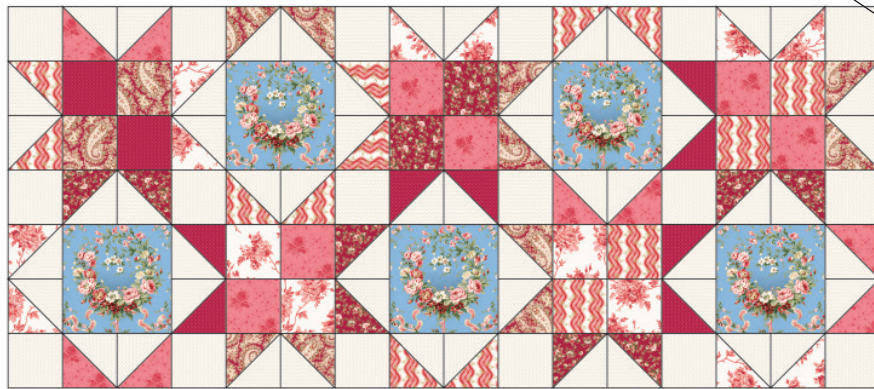
F17 Top Border 2-1/2" x 50-1/2"



Top Star/ Wreath Section



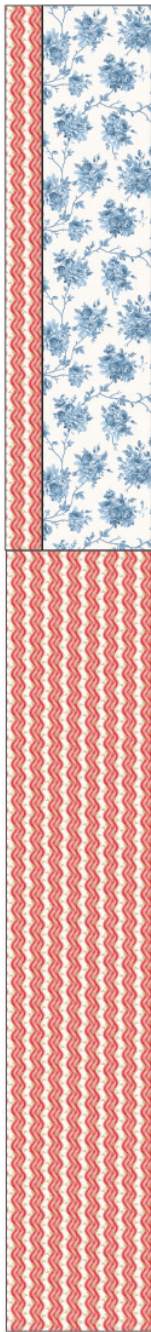
House Center Section



Bottom Star/Wreath Section



F17 Bottom Border 2-1/2" x 48-1/2"

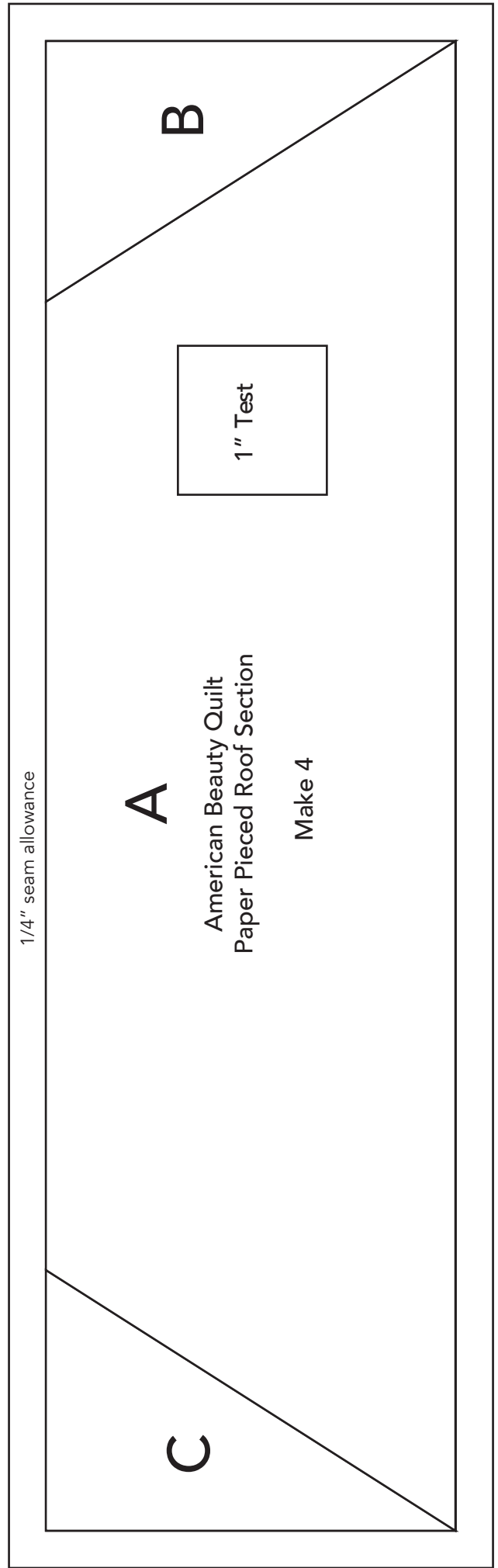
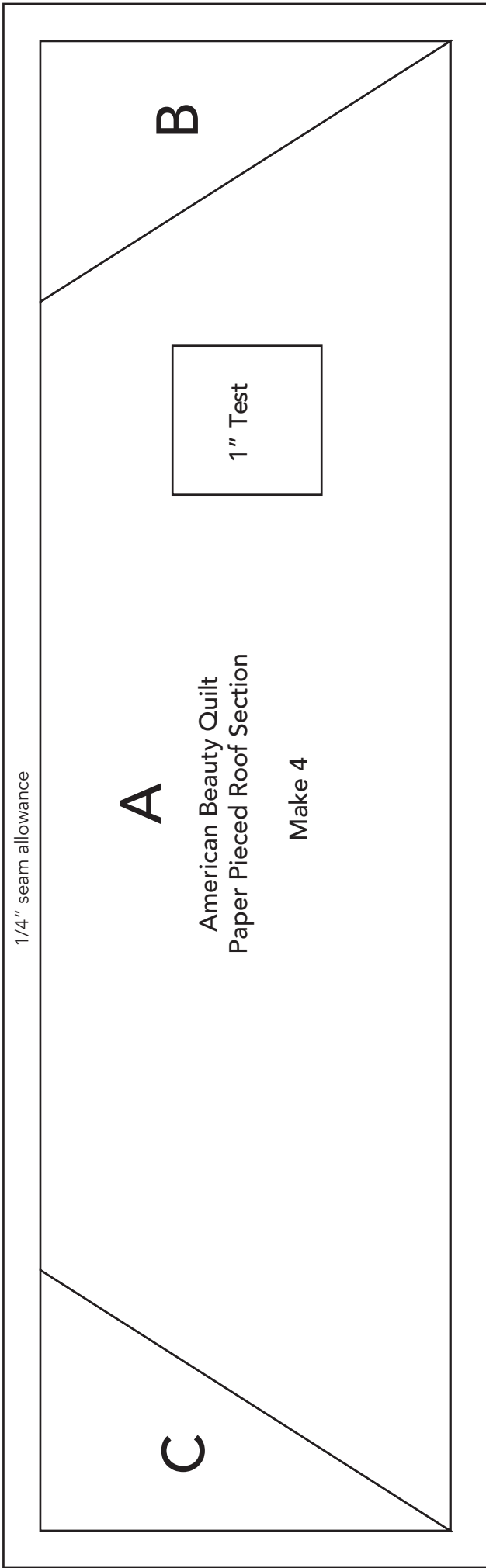


F17 Side Border 2-1/2" x 71-1/2"



Finishing

- ❑ 1. Layer the backing (wrong side up), batting and quilt top (right side up). Baste layers to secure. Quilt as desired. Trim the excess backing and batting.
- ❑ 2. Sew the binding strips together into one continuous strip. Press in half length-wise. Sew the binding to the quilt top with a 1/4" seam allowance. Turn the binding to the back side of the quilt and stitch down by hand with matching thread.



Robyn's Needleturn Applique Method

1. Trace designs on to the freezer paper (The non-shiny side). I use a pencil to do this. When tracing a pattern with many parts it helps to number the pieces so that when you are putting things back together you know where they go.
2. Cut the designs out using paper scissors. I put all of one thing (i.e. leaves) in a small zip-loc bag so that the pieces are not lost before you need them.
3. Press the freezer paper templates on to the right side of the selected fabric. Make sure to leave about a half inch between pieces.
4. With an ultra fine point permanent black marker (any color is fine if you prefer not to use black), trace around the edge of the freezer paper template onto the fabric. The reason for the marker is that it is fast and will take less time than a pencil or chalk. The line will be turned under as you stitch so you do not need to worry about seeing the line. Check your marker before using to make sure that it does not bleed. Some pens when they are older tend to bleed because of the ink separating.
5. Cut the pieces out leaving about 1/8 " - 1/4 " of fabric around each piece. The better you are the less fabric you need. If you trim too close to start you may have trouble needle-turning later so leave extra and trim as you stitch.
6. Lay your background fabric out and find the center of the block. Lay your design out according to the pattern. With basting glue, glue the design element that is on the background first. In other words, start gluing pieces down that are furthest from your vision and take the freezer paper off as you glue so that you do not glue anything on top of freezer paper.
(Remember, when using glue, do not use too much. Just a few dots of glue will suffice. Also, do not glue within 1/4" of the black line or you will not be able to turn the fabric under with your needle).
7. I glue everything down at once so that all the preparation is done and out of the way. Now all that is left is stitching which is the best part. This method also eliminates a lot of stitching because you only have to stitch the raw edges that are visible. Anything that is under something else can be left unstitched. You will also find that once you have everything glued down you can easily take your project with you where ever you go.

Repeat leaves, berries and vine to fit borders.

Bottom Border: 6" x 26"

Side Border with Large Heart: 6" x 36"

