

Chocolate Covered Cherries

Patchwork Lap Quilt

by *Kim Diehl*



Finished Quilt Size: 60" x 60"
A Free Project Sheet from



Henry Glass & Co., Inc.



49 West 37th Street, New York, NY 10018
tel: 212-686-5194 • fax: 212-532-3525
Toll-free: 800-294-9495
www.henryglassfabrics.net

facebook

Chocolate Covered Cherries

Patchwork Lap Quilt

Finished Quilt Size: 60" x 60"

MATERIALS

Yardages are based on a 42" width of useable fabric after prewashing and removing selvages.

- 7/8 yard of cherry teardrop sprays print for blocks and setting triangles (209-88)
- 4 fat eighths (9" x 21") of assorted cherry prints for blocks (208-88; 211-88; 215-88; 216-88)
- 2/3 yard of chocolate floral print for blocks and binding (202-33)
- 4 fat eighths (9" x 21") of assorted chocolate prints for blocks (198-33; 204-33; 206-33; 216-33)
- 3 fat quarters (18" x 21") of assorted chestnut prints for blocks (206-303; 211-33; 213-33)
- 6 fat eighths (9" x 21") of assorted pink prints for blocks (199-22; 202-22; 205-22; 206-22; 207-22; 214-22)
- 5/8 yard *each* of 5 assorted cream prints for blocks (200-40; 201-40; 203-40; 210-40; 212-40)
- 3 3/4 yards of fabric for backing (Kim suggests the cream fancy flowers print, 200-40.)
- 67" x 67" square of batting
- Standard sewing and quilting supplies

CUTTING

Cut all pieces across the width of the fabric in the order given unless otherwise noted. Please refer to the swatch page provided at the end of this handout as needed during the cutting and piecing steps.

From the cherry teardrop sprays print, cut:

- 2 strips, 9 3/4" x 42"; crosscut the first strip into 4 squares, 9 3/4" x 9 3/4". From the second strip, cut 2 additional 9 3/4" squares, and 2 squares 5 1/8". Cut each 9 3/4" square in half diagonally *twice* to yield 4 side setting triangles (total of 24). Cut each 5 1/8" square in half diagonally *once* to yield 2 corner setting triangles (total of 4).
- 1 strip, 1 1/2" x 42"; crosscut into 6 rectangles, 1 1/2" x 3 1/2", and 6 rectangles, 1 1/2" x 2 1/2". Organize the rectangles into 6 cherry star-point patchwork sets, with each set consisting of 1 long and 1 short rectangle.
- 2 additional strips, 1 1/2" x 42"; crosscut into 12 rectangles, 1 1/2" x 4 1/2". Organize these rectangles in groups of 4 to make 3 cherry nine-patch variation patchwork sets.

From the remaining 4 assorted cherry prints, cut a combined total of:

- 30 matching-print rectangle sets, each set consisting of 1 long rectangle, 1 1/2" x 3 1/2", and 1 short rectangle, 1 1/2" x 2 1/2". These sets make 30 additional cherry star-point patchwork sets (total of 33 with previously cut sets).
- 8 matching-print rectangle sets, each set consisting of 4 rectangles, 1 1/2" x 4 1/2". These sets make 8 additional cherry nine-patch variation patchwork sets (total of 14 with previously cut sets).

From the chocolate floral print, cut:

- 7 binding strips, 2 1/2" x 42"
- 2 strips, 1 1/2" x 42"; crosscut into 12 rectangles, 1 1/2" x 4 1/2". Organize these rectangles in groups of 4 to make 3 chocolate nine-patch variation patchwork sets. Reserve the remainder of the second strip for the next cutting step.
- 1 strip, 1 1/2" x 42"; crosscut this and the reserved strip into 7 rectangles, 1 1/2" x 3 1/2", and 7 rectangles, 1 1/2" x 2 1/2". Organize the rectangles into 7 chocolate star-point patchwork sets, with each set consisting of 1 long and 1 short rectangle.

From the remaining 4 assorted chocolate prints, cut a combined total of:

- 26 matching-print rectangle sets, each set consisting of 1 long rectangle, 1 1/2" x 3 1/2", and 1 short rectangle, 1 1/2" x 2 1/2". These sets make 26 additional chocolate star-point patchwork sets (total of 33 with previously cut sets).
- 12 matching-print rectangle sets, each set consisting of 4 rectangles, 1 1/2" x 4 1/2". These sets make 12 additional chocolate nine-patch variation patchwork sets (total of 15 with previously cut sets).

From each of the 3 assorted chestnut prints, cut:

- 4 strips, 1 1/2" x 21"; crosscut into 11 rectangles, 1 1/2" x 3 1/2" (combined total of 33), and 11 rectangles, 1 1/2" x 2 1/2" (combined total of 33). Organize the rectangles by print into 33 chestnut star-point patchwork sets, with each set consisting of 1 long and 1 short rectangle. Reserve the remainder of the 3 assorted chestnut prints.

From the reserved remainder of the 3 assorted chestnut prints, cut a combined total of:

40 rectangles, 1½" x 4½", in matching sets of 4. Organize these rectangles into 10 chestnut nine-patch variation patchwork sets.

From the 6 assorted pink prints, cut a combined total of:

33 matching-print rectangle sets, with each set consisting of 1 long rectangle, 1½" x 3½", and 1 short rectangle, 1½" x 2½". These sets make 33 pink star-point patchwork sets.

52 rectangles, 1½" x 4½", in matching sets of 4. Organize these rectangles into 13 pink nine-patch variation patchwork sets.

From the 5 assorted cream prints, cut a combined total of:

264 squares, 1½" x 1½" (approximately 52–53 per print).

Label these squares as the cream star patchwork set.

132 squares, 2½" x 2½" (approximately 26–27 per print).

Add these squares to the cream star patchwork set.

208 squares, 1½" x 1½" (approximately 41–42 per print).

Label these squares as the cream nine-patch variation patchwork set.

52 squares, 4½" x 4½" (approximately 10–11 per print).

Add these squares to the cream nine-patch variation patchwork set.

PIECING the STAR BLOCKS

Sew all pieces with right sides together and a ¼" seam allowance unless otherwise noted. Press the seam allowances as indicated by the arrows or otherwise specified.

Please note that each Star block pairs together a set of pieced cherry and pink rectangles, and a set of pieced chocolate and chestnut rectangles. You can duplicate the placement of the color positions in the quilt shown, or change their positions if you'd like more variety in the blocks, as long as the cherry/pink and chocolate/chestnut pairings remain intact.

1 Select one each of the cherry, chocolate, chestnut, and pink star-point patchwork sets, with each set consisting of a large and small rectangle from a single matching print. In addition, from the cream star patchwork set and choosing the prints randomly, select eight cream 1½" squares and four cream 2½" squares. Draw a diagonal sewing line from corner to corner on the wrong side of each cream 1½" square.

2 Select the long and short cherry rectangles. Referring to the illustration, layer a prepared cream 1½" square onto one end of the long cherry rectangle. Stitch the pair along the drawn diagonal line. Fold the resulting inner triangle open, aligning the corner with the corner

of the rectangle. Press. Trim away the layers beneath the top triangle, leaving a ¼" seam allowance. In the same manner, add a cream triangle to one end of the short cherry rectangle to form a mirror-image star point. The pieced long cherry star-point rectangle should measure 1½" x 3½", and the pieced short cherry star-point rectangle should measure 1½" x 2½", including the seam allowances.



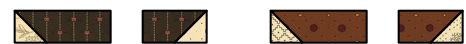
Make a mirror-image pair of pieced cherry star-point rectangles, 1½" x 3½" and 1½" x 2½".

3 Follow step 1 to piece a mirror-image set of pink star-point rectangles as shown. (These star points will be rotated upside down in the finished block.)



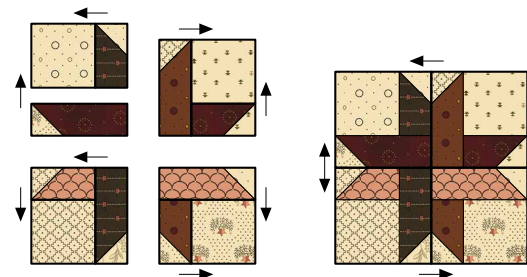
Make a mirror-image pair of pieced pink star-point rectangles.

4 Using the chocolate and chestnut star-point patchwork sets, follow steps 2 and 3 to piece a set of mirror-image chocolate and chestnut star-point rectangles as shown. (These star points will run vertically in the finished block.)



Make a set of chocolate and chestnut star-point rectangles.

5 Lay out the pieced cherry and pink, and chocolate and chestnut, star-point rectangles from the previous block steps, and the four cream 2½" squares in four quadrants as shown. Join the pieces in each quadrant. Press. Join the quadrants in two horizontal rows. Press. Join the rows. Press. The pieced Star block should measure 6½" square, including the seam allowances.

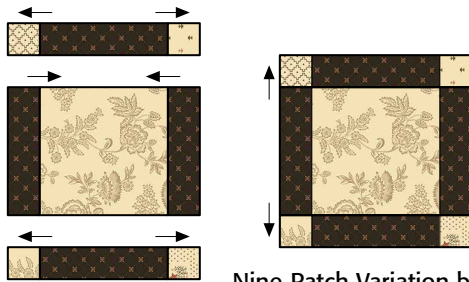


Star block, 6½" x 6½"

6 Repeat steps 1–5 to piece a total of 33 Star blocks.

PIECING the NINE-PATCH VARIATION BLOCKS

- 1 Select one nine-patch variation patchwork set of four rectangles, $1\frac{1}{2}'' \times 4\frac{1}{2}''$, in any given color. In addition, from the cream nine-patch variation patchwork set, and choosing the prints randomly, select four cream $1\frac{1}{2}''$ squares and one cream $4\frac{1}{2}''$ square.
- 2 Lay out the rectangles and cream squares in three horizontal rows as shown. Join the pieces in each row. Press. Join the rows. Press. The pieced Nine-Patch Variation block should measure $6\frac{1}{2}''$ square, including the seam allowances.



Nine-Patch Variation block,
 $6\frac{1}{2}'' \times 6\frac{1}{2}''$

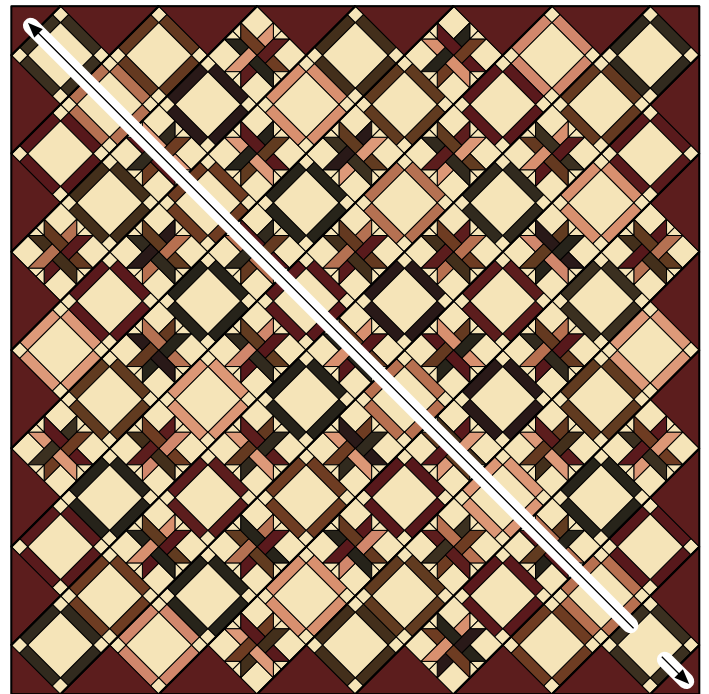
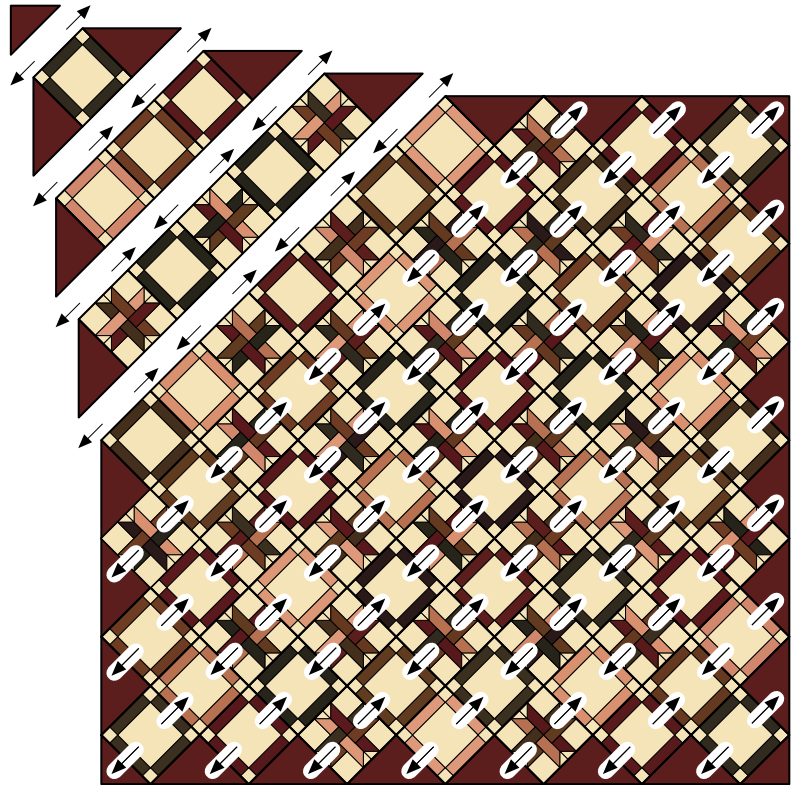
- 3 Repeat steps 1 and 2 to piece a total of 52 Nine-Patch Variation blocks.

PIECING the QUILT

- 1 Using the assembly diagram as a guide, lay out the Star blocks, the Nine-Patch Variation blocks, the large cherry side setting triangles, and the small cherry corner setting triangles in diagonal rows as shown at right.
- 2 Join the pieces in each diagonal row. Press. Join the rows. Press.

COMPLETING the QUILT

Layer and baste the quilt top, batting, and backing. Quilt the layers. Join the chocolate binding strips to make one length and use it to bind the quilt.

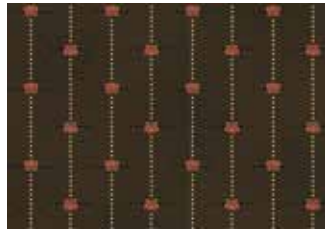


Every effort has been made to ensure that all projects are error free. All the information is presented in good faith, however no warranty can be given nor results guaranteed as we have no control over the execution of instructions. Therefore, we assume no responsibility for the use of this information or damages that may occur as a result. When errors are brought to our attention, we make every effort to correct and post a revision as soon as possible. Please make sure to check www.henryglassfabrics.com for pattern updates prior to starting the project. We also recommend that you test the project prior to cutting for kits. Finally, all free projects are intended to remain free to you and are not for resale or other forms of distribution.



©2022 Kim Diehl

Chocolate Covered Cherries *Fabrics in the Collection*



198-33
Chocolate Striped Heart Blossoms



199-22
Pink Fancy Flowers



200-40
Cream Fancy Flowers



201-40
Cream Stair-Stepped Boxes



202-22
Pink Floral



202-33
Chocolate Floral



203-40
Cream Fleur de Lis



204-33
Chocolate Swagged Bouquets



205-22
Pink Foulard



206-22
Pink Sprigged Blooms



206-33
Chocolate Sprigged Blooms



206-303
Chestnut Sprigged Blooms



207-22
Pink Polka Dot Clusters



208-88
Cherry Wreath Circles



209-88
Cherry Teardrop Sprays



210-40
Cream Star Clusters



211-33
Chestnut Ditsy Geometric



211-88
Cherry Ditsy Geometric



212-40
Cream Dots and Rings



213-33
Chestnut Dots and Rings



214-22
Pink Clamshell



215-88
Black/Cherry Pear Orchard



216-33
Chocolate Cross Hatch



216-88
Cherry Cross Hatch