

3041

Woodland Frost By Lisa Audit



Small Quilt: 52 1/2" x 71 1/2"

www.wilmingtonprints.com

Wilmington Prints: A World of Possibilities

Woodland Frost

Please read all instructions carefully AND identify all fabrics before beginning.

All instructions include a 1/4" seam allowance and strips are cut selvage to selvage, unless stated otherwise.

1. Cut the following:

If using FAT CUTS, you may need to cut additional width-of-fabric strips.

Fabric A - PLEASE NOTE: Panels do not always print the size intended. For this pattern, the panel has a coping border added then trimmed so the panel will fit the quilt correctly.

Fussy cut 1/4" beyond outside edges of panel to approximately 23-1/2" x 42"

Fabric B - Referring to the quilt image, fussy cut strips, the length of fabric parallel to selvage: (2) 8-3/4" x 75" and (2) 8-3/4" x 55" multi-stripe borders

Fabric C - Cut (2) 3" strips, subcut (10) 3" x 5-1/2" pieces and (8) 3" squares

Fabric D - Cut (2) 3" strips, subcut (8) 3" x 5-1/2" pieces and (8) 3" squares
Cut (2) 2-3/4" strips, subcut 2-3/4" x 27" strips
Cut (2) 2" strips

Fabric E - Cut (2) 3" strips, subcut (6) 3" x 5-1/2" pieces and (4) 3" squares

Fabric F - Cut (3) 3" strips, subcut (4) 3" x 5-1/2" pieces and (28) 3" squares

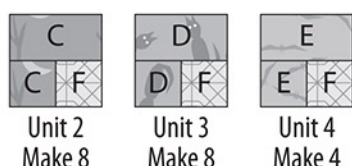
Fabric G - Cut (2) 3" strips, subcut (8) 3" x 5-1/2" pieces and (8) 3" squares
Cut (7) 2-1/2" strips (binding)

2. Piecing Order:

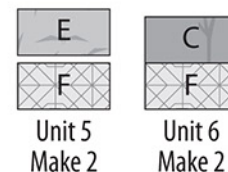
1. Stitch **Fabrics F** and **G** 3" squares together. Add a **Fabric G** 3" x 5-1/2" piece as shown. Make a total of 8 Unit 1 (5-1/2" square unfinished).



2. In the same manner, make 8 each Units 2 and 3 and 4 Unit 4 with fabrics indicated.



3. Sew **Fabrics E** and **F** 3" x 5-1/2" pieces together lengthwise. Make a total of 2 Unit 5 (5-1/2" square unfinished). In the same manner, make 2 Unit 6 with fabrics indicated.



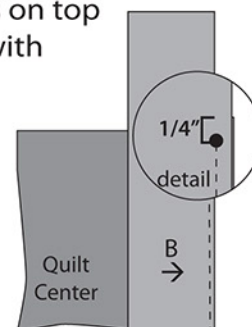
4. Refer to Quilt Layout (Page 3) for arrangement and placement of panel, strips, units, and mitered border.

5. Stitch **Fabric D** 2" x width of fabric strips to sides of the **Fabric A** panel. Trim strip ends even. Add 2-3/4" x 27" **Fabric D** strips to top and bottom of panel. **Trim bordered panel to 25-1/2" x 45-1/2" (unfinished).**

6. Arrange 1 Unit 6 and 2 each Units 1-4 in vertical rows on each side of bordered panel. Sew units together (5-1/2" x 45-1/2" unfinished) and stitch to right and left sides of bordered panel.

7. Arrange 1 Unit 5 and 2 each Units 1-3 in horizontal rows above and below bordered panel. Sew units together (5-1/2" x 35-1/2" unfinished) and stitch to top and bottom of bordered panel. The quilt center measures (35-1/2" x 55-1/2" unfinished).

8. Center **Fabric B** 8-3/4" x 75" borders on right and left sides of quilt center and **Fabric B** 8-3/4" x 55" borders on top and bottom of quilt center with the light stripe next to quilt center. Stitch borders to sides starting and stopping 1/4" from corners of quilt center. Do not trim. Press borders out.



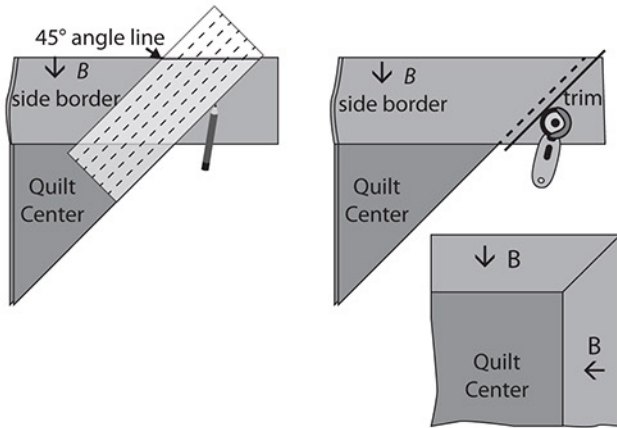
*Letters in italics indicate wrong side of fabric.
Arrows indicate orientation of directional prints.*

Woodland Frost

9. Working with 1 corner at a time, fold the quilt right sides together so the outside edges of the borders line up. Using a 45-degree ruler, mark from the end of border seams to outer edges of borders. Stitch along marked line. Trim seam allowance to 1/4". Press corner seam open. Repeat on remaining corners.

10. The quilt measures approximately 52" x 72" (unfinished). Make backing (**Fabric H**) approximately 8" larger than the top.

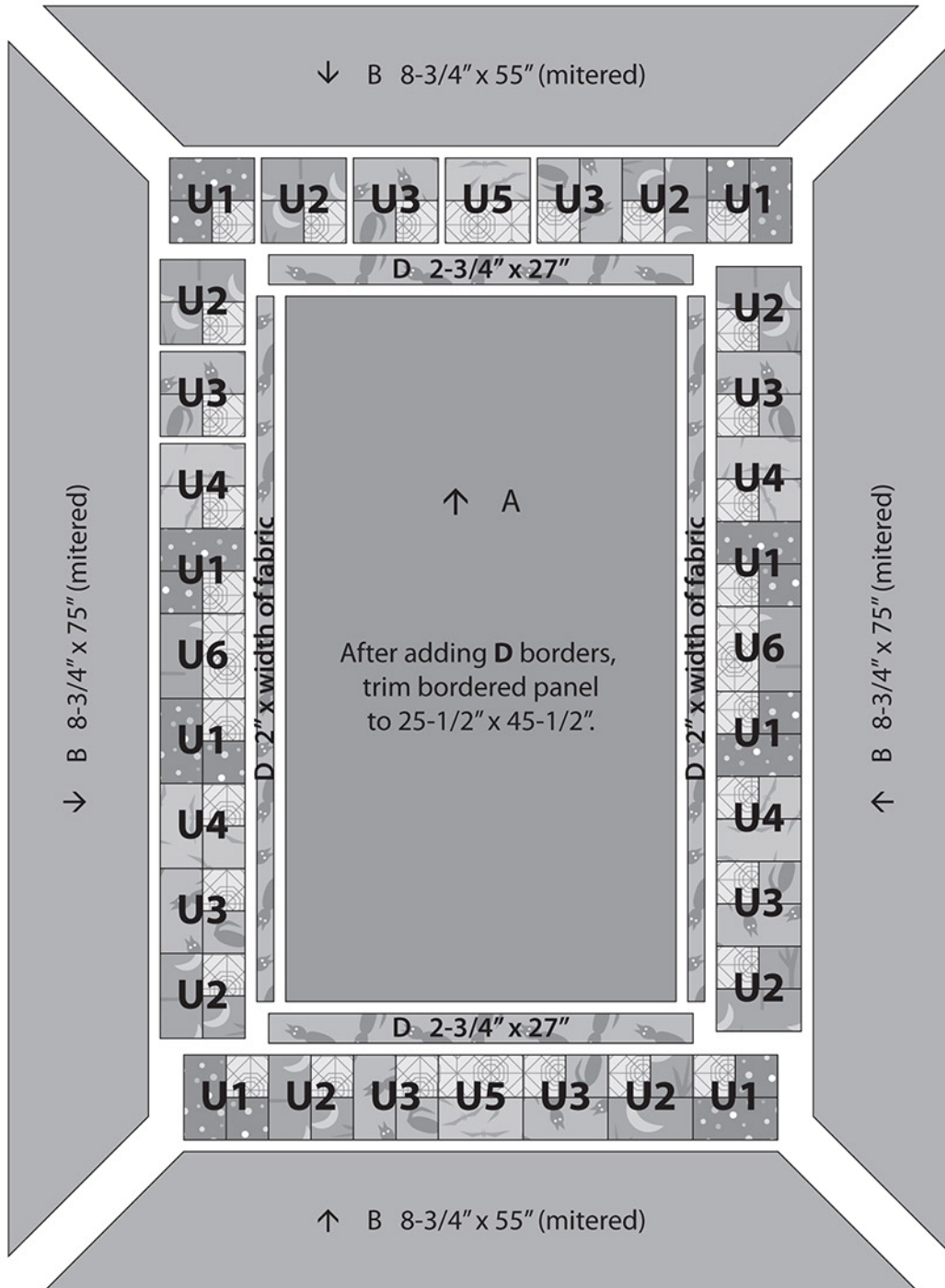
11. Layer and baste top, batting, and backing together. Quilt as desired. Attach binding (**Fabric G**) and enjoy!!



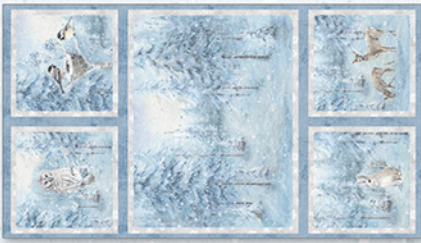
Woodland Frost

QUILT LAYOUT

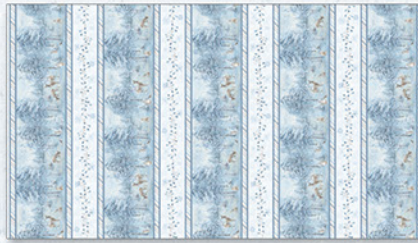
Border measurements are the cut size.
Arrows indicate orientation of directional prints.



Woodland Frost By Lisa Audit



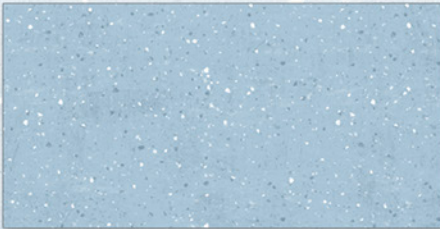
Fabric A
3041-17781-491
2/3 yard (1 Panel)



Fabric B
3041-17782-419
2 1/3 yards



Fabric C
3041-17788-444
1/4 yard
(Or Fat Quarter)



Fabric D
3041-17789-441
5/8 yard



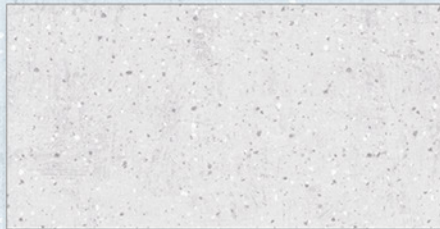
Fabric E
3041-17785-421
1/4 yard
(Or Fat Quarter)



Fabric F
3041-17786-142
3/8 yard



Fabric G
3041-17784-414
7/8 yard
(Incl. Binding)



Fabric H
3041-17789-910
3 1/2 yards
(Suggested Backing)

