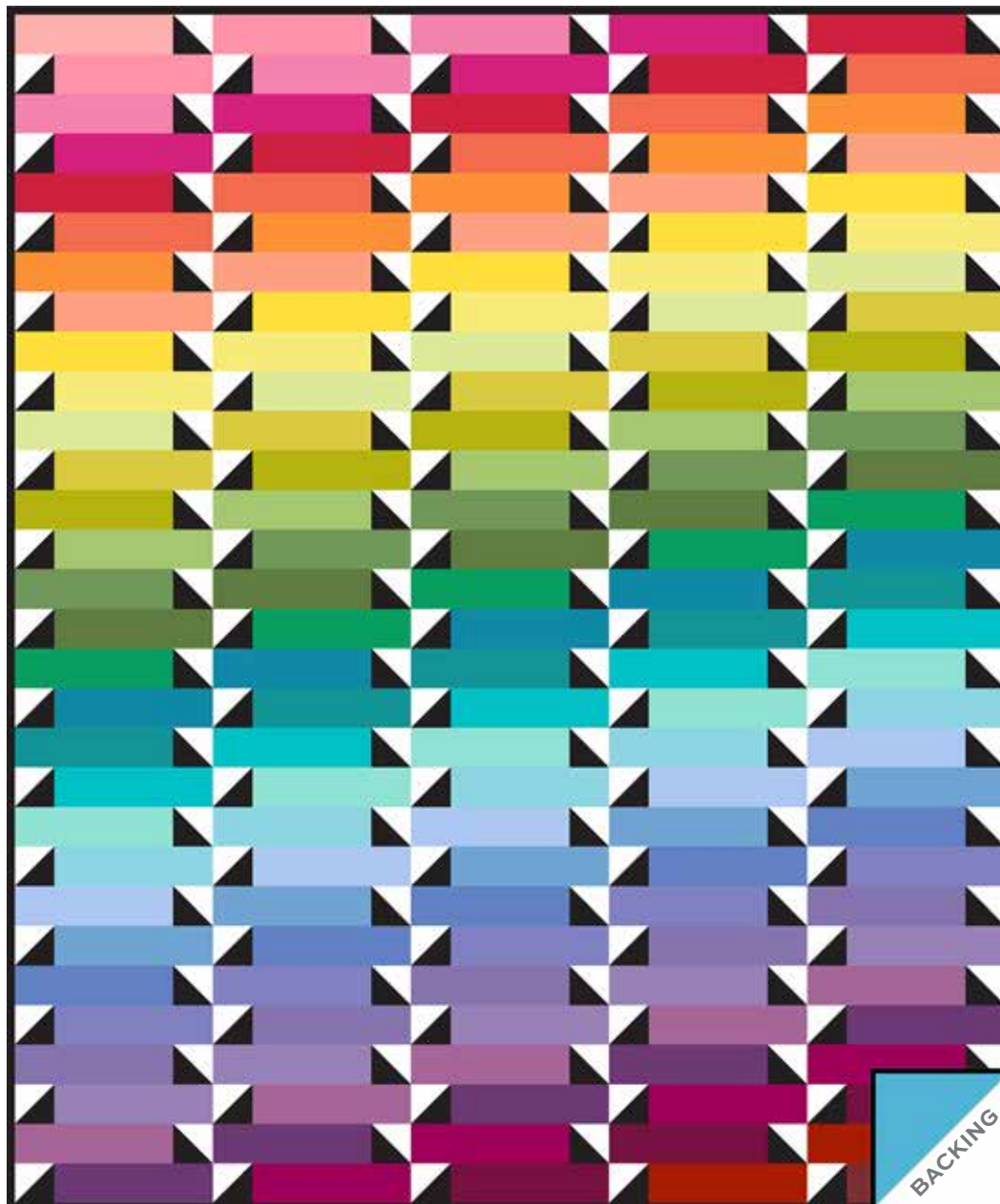


Century Solids

ANDOVER FABRICS

a
100
years



Rainbow Rundle Quilt designed by: **Janet Houts** • Quilt Size: **62½" x 75"**
Skill Level: **Beginner** • andoverfabrics.com

andover



[makower uk](http://makower.uk)

Free Pattern Download Available

1384 Broadway New York, NY 10018
Tel. (800) 223-5678 • andoverfabrics.com

3/30/20

Rainbow Rundle Quilt

Introducing Andover Fabrics new collection: **CENTURY SOLIDS** by Andover Fabrics

Quilt designed by Janet Houts



Quilt finishes 72" x 72"

Everyone loves a color-wheel order of fabrics, and this twin-size quilt is sure to please. The black and white triangles add an especially contemporary touch to the overall simple design.

Cutting Directions

Note: Read assembly directions before cutting patches. All measurements are cut sizes and include 1/4" seam allowances. A fat 1/8 is a 9" x 21"-22" cut of fabric. A fat 1/4 is an 18" x 21"-22" cut. WOF designates the width of fabric from selvedge to selvedge (approximately 42" wide).

Cottonball

Cut (75) squares 3 1/2" (3 3/8") for HST
(Read Step 1 before cutting)

Black

Cut (7) strips 2 1/2" x WOF for binding
Cut (75) squares 3 1/2" (3 3/8") for HST
(Read Step 1 before cutting)

26 Brights

FROM EACH:
Cut (5) rectangles 3" x 10 1/2"

8 Brights

FROM EACH:
Cut (1-4) rectangles 3" x 10 1/2"
(Read Step 2 before cutting)

Backing

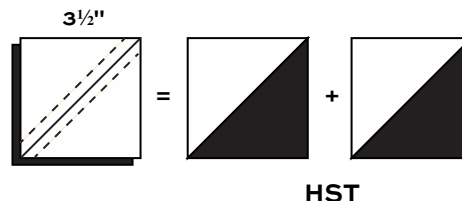
Cut (2) panels 42" x 70", pieced to fit quilt top with overlap on all sides

Fabric Requirements

		Yardage
Cottonball	HST	3/4 yard
*Black	HST	1 1/4 yards
26 Brights	rectangles	fat 1/4 yd ea.
		Aqua, Bluebell, Carrot, Emerald, Flax, Icing, Leaf, Lilac, Margarita, Orchid, Papaya, Peach, Peacock, Pear, Periwinkle, Pickle, Plum, Sailing, Spring, Strawberry, Sunshine, Sulfur, Teal, Turquoise, Water, Wisteria
8 Brights	rectangles	fat 1/8 yd each
		Bubble, GirlyGirl, Mulberry, Passion, PinkLemonade, Raspberry, Terracotta, Wine
Pool (Backing)		4 yards
		*includes 1/2 yard binding

Making the Quilt

1. The quilt uses half-square triangles (HST) that finish 2 1/2" square. Use your favorite method to make HST, or follow these directions. Cut squares 3 1/2" for HST that will be trimmed after stitching. If you prefer not to trim, cut squares 3 3/8". Draw a diagonal line on the wrong side of each Cottonball square (Diagram 1). Place a marked square on a Black square, right sides together. Sew 1/4" seam on each side of the marked line; cut apart on the marked line. Press open to make pieced HST. Trim the HST to 3" square if needed. Make 150 total HST.



2. Cut a total of 20 rectangles 3" x 10 1/2" as follows: Pink Lemonade and Wine: cut 1 each; Bubble and Terracotta: cut 2 each; Girly Girl and Mulberry: cut 3 each; Passion and Raspberry: cut 4 each.

Rainbow Rundle Quilt



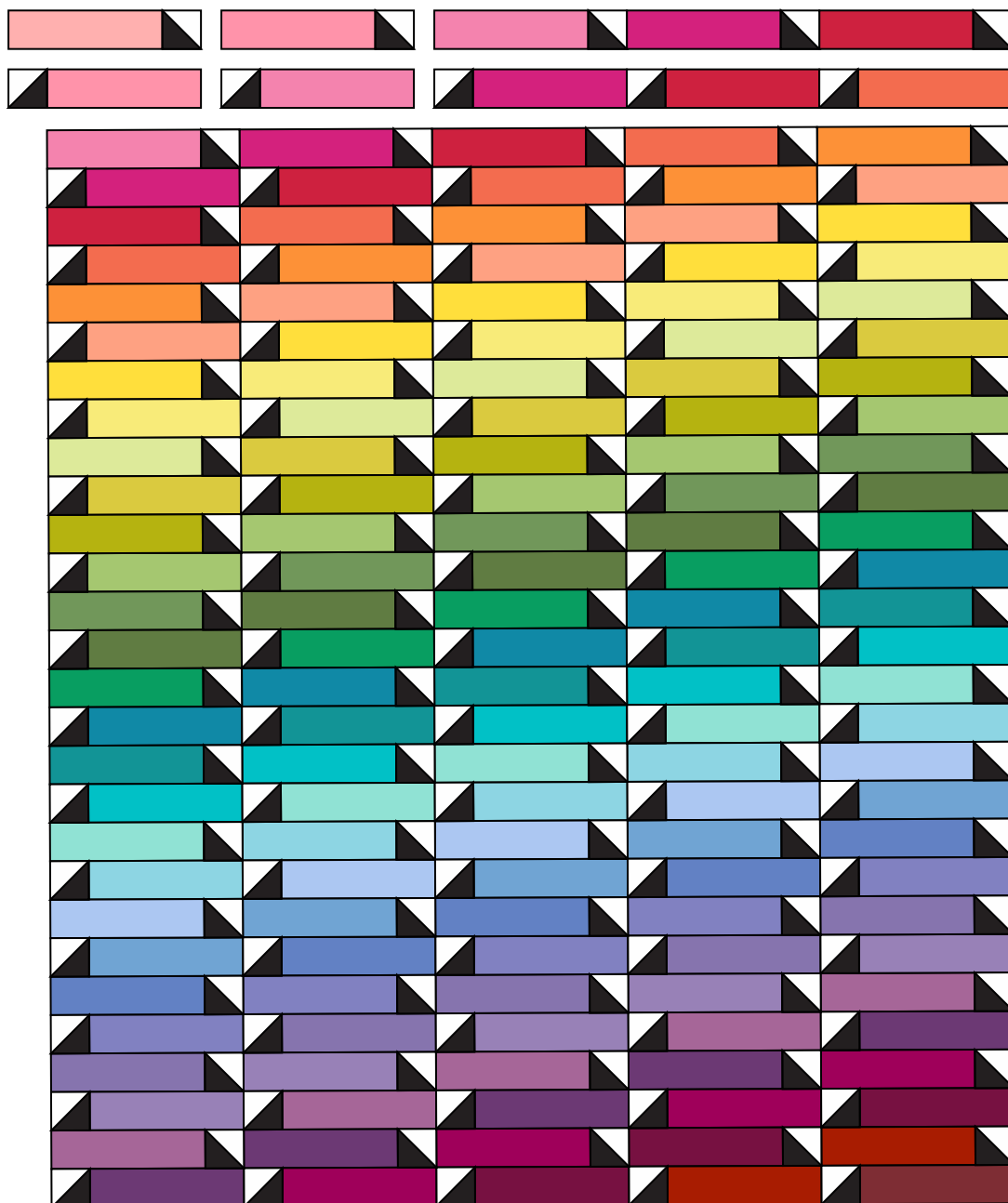
3. Use a design wall or large flat surface for this step. Look at the bottom left corner at the dark purple rectangle, and note how the 5 purple rectangles move diagonally to the right side of the quilt. Each color is positioned in this same way. Arrange 5 different rectangles in each of 30 horizontal rows, paying careful attention to placement of the colors. The rectangles cut in Step 2 fill in the top and bottom where needed. Position a black/white HST at the appropriate end of each rectangle, noting the orientation of each HST. Look through the wrong end of binoculars or through your camera to check that all the parts are placed correctly.
4. Work with one row at a time, starting at the top. Sew an HST to each of the 5 rectangles in the top row, and then join the 5 rectangle units. Replace Row 1 back on the design wall. Repeat these steps with the 5 rectangles and 5 HST for the second horizontal row, noting the shift in placement of the HST.

Once you've replaced a pieced row back on the design wall, check that all the colors and HST are oriented correctly before continuing to the next row. Make 30 rows.

5. Finally, join the 30 rows.

Finishing the Quilt

6. Layer the quilt with batting and backing and baste. Quilt each patch as desired, or quilt an overall design. Bind to finish the quilt.



Quilt Diagram

Century Solids

ANDOVER FABRICS



100
years

Fabrics used in quilt pattern are shown in black. Fabrics shown are 100% of actual size.

CS-10 Almond	CS-10 Aqua	CS-10 Aquarium	CS-10 Aubergine	CS-10 Bahama	CS-10 BarnRose	CS-10 Black	CS-10 Bluebell	CS-10 Bordeaux	CS-10 Brass
CS-10 Bubble	CS-10 Butter	CS-10 Butternut Squash	CS-10 CafeAuLait	CS-10 Caribbean	CS-10 Carrot	CS-10 Chambray	CS-10 Champagne	CS-10 Chocolate	CS-10 Cinnamon
CS-10 Clay	CS-10 Cloud	CS-10 Cocoa	CS-10 Coffee Bean	CS-10 Coral Sunset	CS-10 Corn silk	CS-10 Cottonball	CS-10 Cream	CS-10 Dawn	CS-10 Denim
CS-10 Earth	CS-10 Emerald	CS-10 Faded	CS-10 Flax	CS-10 Ginger	CS-10 Girly Girl	CS-10 Goldenrod	CS-10 Graphite	CS-10 Guacamole	CS-10 GuavaPunch
CS-10 Gunmetal	CS-10 Hunter	CS-10 Icing	CS-10 Isle	CS-10 Ivory	CS-10 Jade	CS-10 Jalapeno	CS-10 Jam	CS-10 Lagoon	CS-10 Leaf
CS-10 Lilac	CS-10 Mango	CS-10 Margarita	CS-10 Moonlight	CS-10 Mulberry	CS-10 Navy	CS-10 Oatmeal	CS-10 Orchid	CS-10 Oyster	CS-10 Papaya
CS-10 Paprika	CS-10 Passion	CS-10 Peach	CS-10 Peacock	CS-10 Pear	CS-10 Periwinkle	CS-10 Pickle	CS-10 Pink Lemonade	CS-10 Pistachio	CS-10 Plum
CS-10 Pool	CS-10 Powder	CS-10 Pressed Flower	CS-10 Raspberry	CS-10 Red	CS-10 Redwood	CS-10 Saffron	CS-10 Sage	CS-10 Sailing	CS-10 Sapphire
CS-10 Sky	CS-10 Slipper	CS-10 Smoke	CS-10 Snow	CS-10 Spice	CS-10 Spring	CS-10 Storm	CS-10 Strawberry	CS-10 Sugar	CS-10 Sunshine
CS-10 Sulfur	CS-10 Teal	CS-10 Terracotta	CS-10 Truffle	CS-10 Turquoise	CS-10 Uniform	CS-10 Water	CS-10 Whisper	CS-10 Wine	CS-10 Wisteria

andover : makower uk

Free Pattern Download Available

1384 Broadway New York, NY 10018

Tel. (800) 223-5678 • andoverfabrics.com

3/30/20