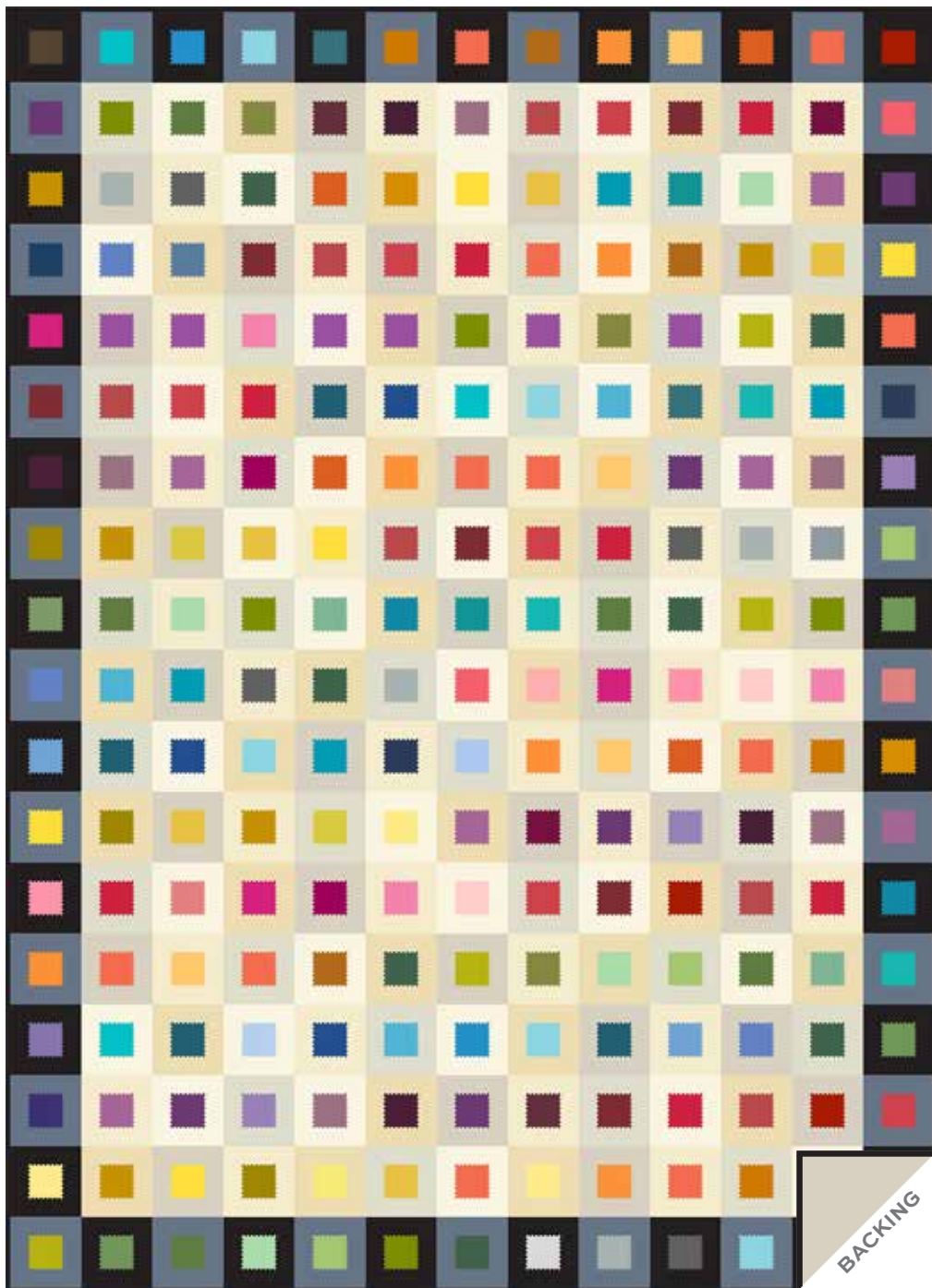


Century Solids

ANDOVER FABRICS



100
years



Century Squares Quilt designed by: **Kim Schaefer** • Quilt Size: **52" x 72"**

Skill Level: **Beginner / Intermediate** • andoverfabrics.com

andover

•
•
• makower.uk
•

Free Pattern Download Available

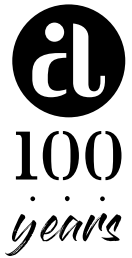
1384 Broadway New York, NY 10018
Tel. (800) 223-5678 • andoverfabrics.com

3/30/20

Century Squares Quilt

Introducing Andover Fabrics new collection: **CENTURY SOLIDS** by Andover Fabrics

Quilt designed by Kim Schaefer



Quilt finishes 52" x 72"

29 Black Blocks: 4" x 4"

29 Graphite Blocks: 4" x 4"

176 White Blocks: 4" x 4"

What's black and white and colorful all over? This contemporary throw-size quilt is! And what a snap to make, too. The multiple bright prints are applied to each black or white square with machine stitching. What could be easier?

Fabric Requirements

		Yardage
2 Dark	blocks	5/8 yard each
	Graphite, Black	
5 Light	blocks	5/8 yard each
	Almond, Champagne, Cream, Ivory, Oyster	
73 solids	blocks	5" square each
	Aquarium, Aubergine, Bahama, BarnRose, Bluebell, Bordeaux, Brass, Bubble, Butter, ButternutSquash, Caribbean, Carrot, Chocolate, Cloud, CoralSunset, Dawn, Denim, Earth, Faded, Flax, Ginger, GirlyGirl, Goldenrod, Guacamole, GuavaPunch, Gunmetal, Hunter, Icing, Isle, Jade, Jalapeno, Jam, Lagoon, Leaf, Lilac, Mango, Margarita, Mulberry, Navy, Orchid, Papaya, Paprika, Passion, Peacock, Pear, Periwinkle, Pickle, PinkLemonade, Pistachio, Pool, Plum, PressedFlower, Raspberry, Red, Sage, Sailing, Saffron, Sapphire, Sky, Slipper, Smoke, Spice, Storm, Strawberry, Sunshine, Sulfur, Teal, Terracotta, Turquoise, Uniform, Water, Wine, Wisteria	
Black (binding)		1/2 yard
Champagne (backing)		3 1/2 yards

Cutting Directions

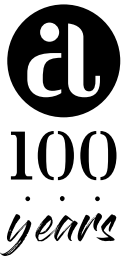
Note: Read assembly directions before cutting patches. All measurements are cut sizes and include 1/4" seam allowances. WOF designates the width of fabric from selvedge to selvedge (approximately 42" wide).

- 2 Dark** **From each:**
Cut 29 squares 4 1/2" x 4 1/2"
- 5 Light** **From each:**
Cut 35-36 squares 4 1/2" x 4 1/2" (176 total)
- 73 Bright** **From each:**
Cut 3-4 squares 2" x 2" (234 total)
OR cut a 5" square from each
(Read Step 1 before cutting.)
- Binding** Cut (7) strips 2 1/2" x WOF for binding
- Backing** Cut (2) panels 40" x 60", pieced to fit quilt top with overlap on all sides

Making the Quilt

1. The bright 2" squares are cut with a zigzag edge. If you prefer to fuse the bright squares to the background dark and light squares, press a lightweight fusible web to the wrong side of a 5" square of bright fabric. Cut 3-4 squares 2" x 2" from the bright 5" square. If using pinking shears, we suggest that you first cut the 2" squares with a regular rotary cutter, and then use pinking shears to cut the edges of each square. Or, use a specialty pinking or scallop rotary blade to cut the 2" squares needed from each bright solid. Repeat these steps with all the bright fabrics. Cut a total of 234 little squares.
2. Position a prepared 2" square in the center of a light 4 1/2" square. Fuse in place if you used the fusible web in Step 1. If not, pin the 2" square on a 4 1/2" square. Use a straight machine stitch to stitch the little square to the larger square, stitching just inside the pinked edge. Use contrasting, matching, or invisible thread, as you wish.

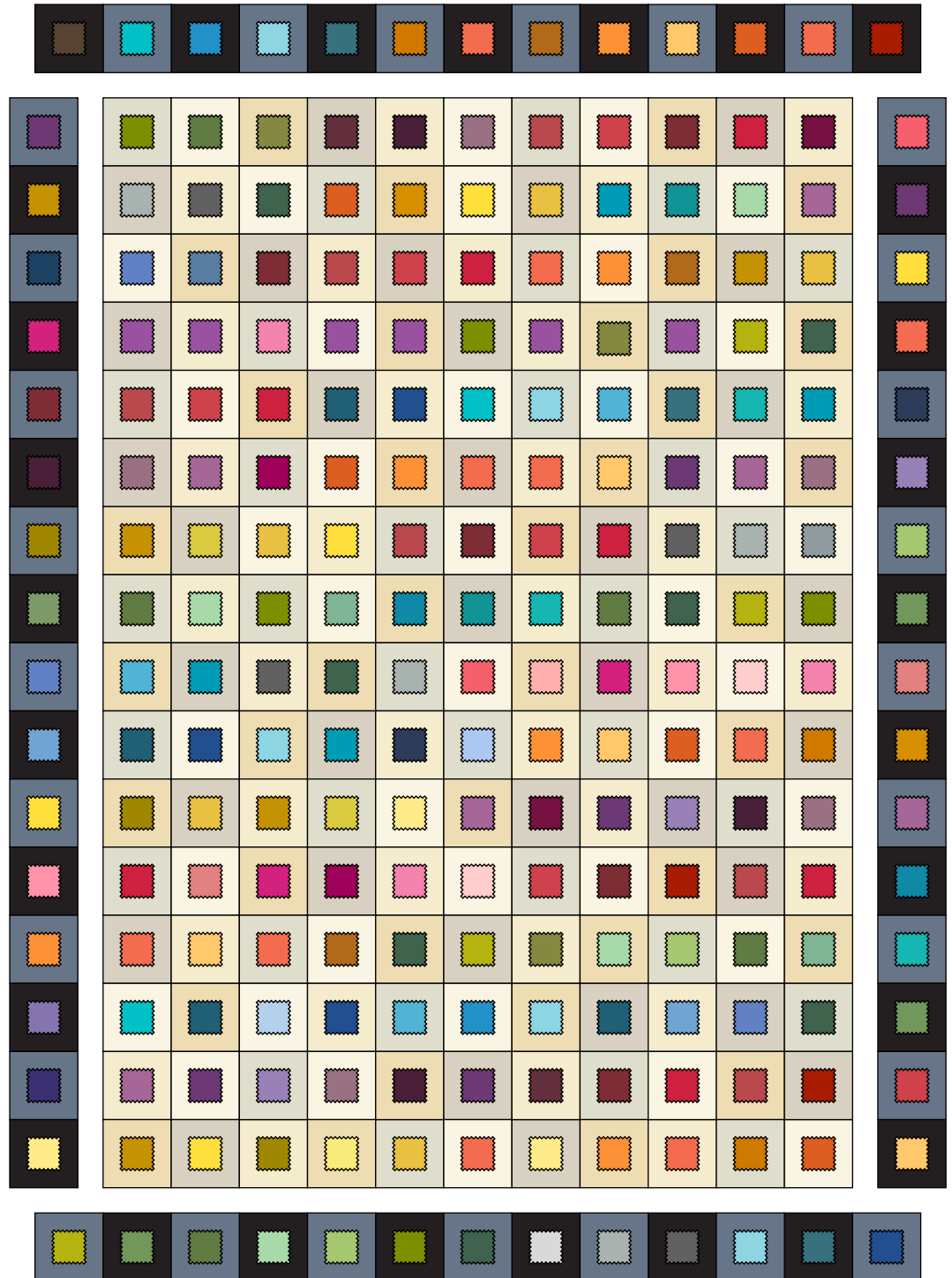
Century Squares Quilt



3. Refer to the Quilt Diagram for the following steps. Once you have stitched all 234 blocks, arrange 11 light blocks in each of 16 rows, being sure that the prints are scattered so no print touches itself. Once you are satisfied with the arrangement, join the blocks in rows, and then join the rows.
4. Alternately join 8 black and 8 graphite blocks to make a side border. Sew to the side of the quilt. Repeat for the opposite side. Join 6 black blocks and 7 graphite blocks to make the top border. Sew to the quilt. Join 7 black blocks and 6 graphite blocks for the bottom border. Sew to the quilt.

Finishing the Quilt

5. Layer the quilt with batting and backing and baste. Quilt in the ditch around blocks. Bind to finish the quilt.



Quilt Diagram

Century Solids

ANDOVER FABRICS



100
years

Fabrics used in quilt pattern are shown in black. Fabrics shown are 100% of actual size.

CS-10 Almond	CS-10 Aqua	CS-10 Aquarium	CS-10 Aubergine	CS-10 Bahama	CS-10 BarnRose	CS-10 Black	CS-10 Bluebell	CS-10 Bordeaux	CS-10 Brass
CS-10 Bubble	CS-10 Butter	CS-10 Butternut Squash	CS-10 CafeAuLait	CS-10 Caribbean	CS-10 Carrot	CS-10 Chambray	CS-10 Champagne	CS-10 Chocolate	CS-10 Cinnamon
CS-10 Clay	CS-10 Cloud	CS-10 Cocoa	CS-10 Coffee Bean	CS-10 CoralSunset	CS-10 Corn silk	CS-10 Cottonball	CS-10 Cream	CS-10 Dawn	CS-10 Denim
CS-10 Earth	CS-10 Emerald	CS-10 Faded	CS-10 Flax	CS-10 Ginger	CS-10 GirlyGirl	CS-10 Goldenrod	CS-10 Graphite	CS-10 Guacamole	CS-10 GuavaPunch
CS-10 Gunmetal	CS-10 Hunter	CS-10 Icing	CS-10 Isle	CS-10 Ivory	CS-10 Jade	CS-10 Jalapeno	CS-10 Jam	CS-10 Lagoon	CS-10 Leaf
CS-10 Lilac	CS-10 Mango	CS-10 Margarita	CS-10 Moonlight	CS-10 Mulberry	CS-10 Navy	CS-10 Oatmeal	CS-10 Orchid	CS-10 Oyster	CS-10 Papaya
CS-10 Paprika	CS-10 Passion	CS-10 Peach	CS-10 Peacock	CS-10 Pear	CS-10 Periwinkle	CS-10 Pickle	CS-10 Pink Lemonade	CS-10 Pistachio	CS-10 Plum
CS-10 Pool	CS-10 Powder	CS-10 Pressed Flower	CS-10 Raspberry	CS-10 Red	CS-10 Redwood	CS-10 Saffron	CS-10 Sage	CS-10 Sailing	CS-10 Sapphire
CS-10 Sky	CS-10 Slipper	CS-10 Smoke	CS-10 Snow	CS-10 Spice	CS-10 Spring	CS-10 Storm	CS-10 Strawberry	CS-10 Sugar	CS-10 Sunshine
CS-10 Sulfur	CS-10 Teal	CS-10 Terracotta	CS-10 Truffle	CS-10 Turquoise	CS-10 Uniform	CS-10 Water	CS-10 Whisper	CS-10 Wine	CS-10 Wisteria