

[illegible]

Finish Size: 65" x 80"

PS44270

Using Cake Mix Papers

Moda Cake Mixes are triangle papers designed to make the parts needed to make the blocks shown on the front cover of each Recipe pad. Just add Layer Cakes or Charm Packs, stitch on the lines, cut apart and piece blocks.

This is what you need to know to bake a Cake Mix Recipe.

- The Front Cover of each Recipe pad includes the size of the finished pieces, how many pieces each recipe card will make, and block options.
- Fabric preparation - use the fabric squares right out of the package. Do not starch fabrics as some recipe cards have only 1/8" clearance on the four sides.

Preparing to stitch.

- Layer two squares right sides together aligning the edges closely with the **lighter square on the top**.
- Line up the edge of the paper with the outside point of the pinked edges and pin to secure.
- Shorten the stitch length to 12 to 14 stitches or a machine setting of 1.75 to 2.

Stitching the recipe card.

- Starting at the star and stitching in the direction of the arrows - **stitch on the dotted line**.
- After all the dotted lines have been stitched, use a rotary cutter and ruler to cut the square apart.
- With the paper still attached, press the seam to the dark triangle. Remove the paper and trim the corners.

For more information:

<https://blog.modafabrics.com/2018/08/cake-mix-101/>

https://my.modafabrics.com/webfiles/fp_cake-mix-essentials_info-sheet.pdf

CUTTING

From the 3/8-yard pieces:

- 1 strip – 10" x 42" wof. From the strip, cut 4 squares – 10" x 10".
- 1 strip – 2 1/2" x 42" wof. From the strip, cut 4 squares – 2 1/2" x 2 1/2". (These will be used to make 1 1/2" finished HTSs – 8 required.)

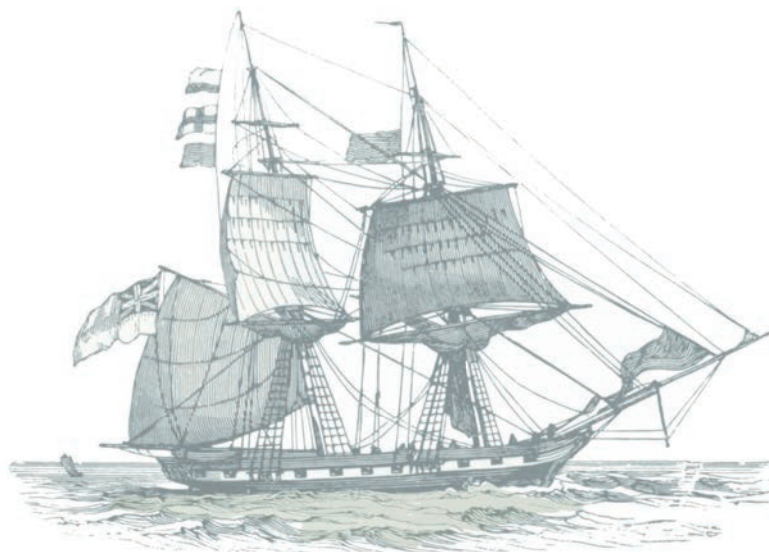
**There will be extras.*

From the background:

- 10 strips – 10" x 42" wof. From each strip, cut 4 squares – 10" x 10". Cut 40 total.
- 3 strips – 2 1/2" x 42" wof. From the strips, cut 40 squares – 2 1/2" x 2 1/2".
- 28 strips – 2" x 42" wof.
 - From 10 strips, cut 80 rectangles – 2" x 5".
 - From 14 strips, cut 80 rectangles – 2" x 6 1/2".
 - From 4 strips, cut 80 squares – 2" x 2".
- 8 strips – 3" x 42" wof. Set aside for the border.

From the binding:

- 8 strips - 2 1/4" x 42" wof.



USING CAKE MIX RECIPE 11

Select 40 print and 40 background squares - 10" x 10" each. *There will be extra print squares.*

With right sides together, layer 1 background square with 1 print square, with the **lighter square on top**. Pin one sheet of Recipe 11 to the background with enough pins to secure the paper while it is being stitched and turned.

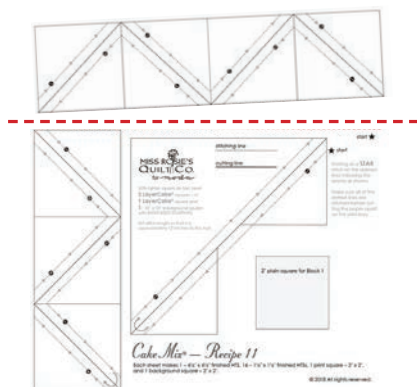
Stitch on all of the dotted lines - including the diagonal stitching lines on both sides of the large HTS.

CUTTING THE CAKE MIX

NOTE: We'll be changing up the CUTTING for the large HTS—cutting out a second large HTS in place of the plain square and two small HTSs. All of the stitching lines are the exact same as printed. Make sure to only cut where instructed, in the order listed here.

Step 1 - Make the 1st cut to separate the row of small HTSs.

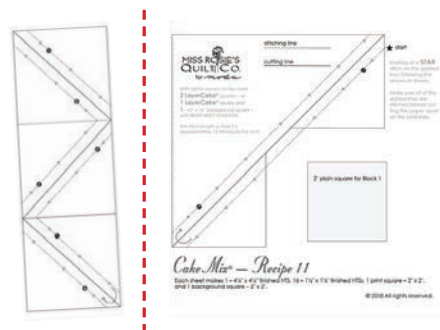
These 8 small HTSs can be trimmed and cut apart now or later.



CUTTING THE CAKE MIX (cont'd)

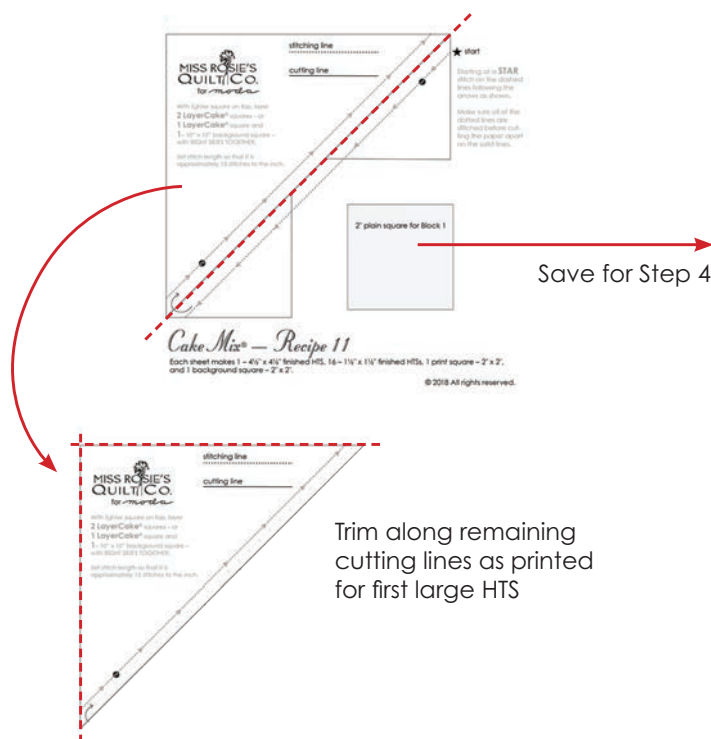
Step 2 - Make the 2nd cut as shown to separate the column of small HTSs.

As in Step 1, the strip with 6 small HTSs can be trimmed now or later.



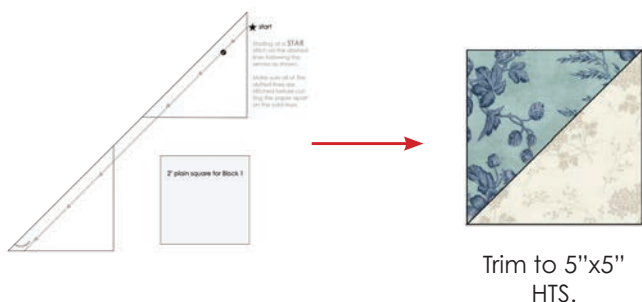
Step 3 - Cut the diagonal seam as shown, separating the large HTS that is printed in the Cake Mix from the rest of the page. Do not cut into the remainder of the page yet.

Trim the side of the large HTS on the cutting lines to make your first large HTS.



CUTTING THE CAKE MIX (cont'd)

Step 4 - For the remaining section, you'll trim up as you would traditionally pieced HTSs instead of following the printed instructions on the Cake Mix. Remove the paper, and press the seam in the direction of the print. Trim into a 5"x5" HTS.



Step 5 - Circle back to trim up the rest of the small HTSs from Steps 1 & 2. With the paper attached, press the remaining HTSs to the print fabric.

Remove the paper and trim the points.

Repeat Steps 1-5 to stitch a total of 40 Recipe No. 11 cards.

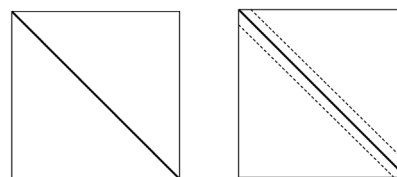
- Each card will yield - 2 HTSs measuring 5" x 5" and 14 HTSs measuring 2" x 2".

moda

MAKE ADDITIONAL HTSs

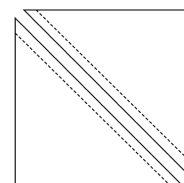
Gather (40) 2½" x 2½" print squares, matching the prints used with the Cake Mix, and (40) 2½" x 2½" background squares to make additional HTSs for the blocks.

On the wrong side of the background square, use a pen, pencil or marker to draw a line diagonally across the square from one corner to the opposing corner.



With right sides together, align the edges of the background square to the print square. Using a scant ¼" seam allowance, stitch on both sides of the line.

Cut the square apart on the drawn line. Press the seams to the print (non-background) triangle.



Trim the HTSs to measure 2" x 2".

Repeat to make 2 more HTSs for each Recipe card.



Trim to 2"x2" HTS.

Sort the small HTSs into groups of 8 matching units. Make 80 sets.



Make 80 sets of 8 matching 2" HTSs

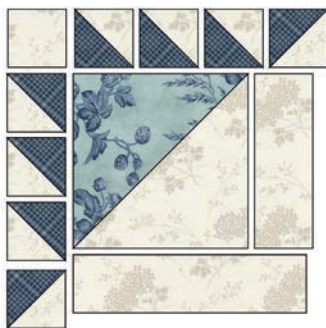
MAKING THE BLOCKS

All seams are a scant 1/4".

For each block, the following pieces are required:

- 1 large HTS - 5" x 5"
- 8 small HTSs - 2" x 2"
- 1 background square - 2" x 2"
- 1 background rectangle - 2" x 5"
- 1 background rectangle - 2" x 6½"

Lay out the pieces as shown:

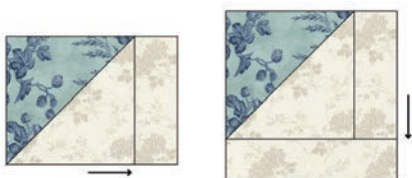


Join the small HTSs as shown. Press the seams in the direction of the arrows - or press them open.

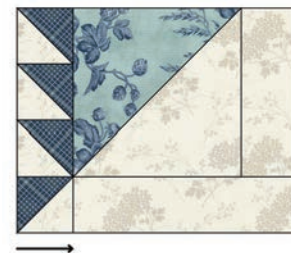


Join the 2" x 5" rectangle to the side of the large HTS. Press the seam in the direction of the arrow - to the rectangle.

Then join the 2" x 6½" rectangle to the remaining side. Press the seam in the direction of the arrow - to the rectangle.



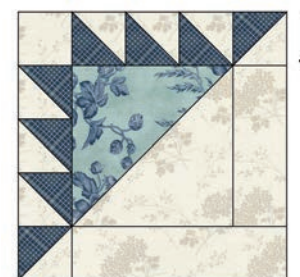
Join the pieced strip to the side of the block. Press the seam in the direction of the arrow - or press it open.



Join the remaining pieced strip to the top edge. Press the seam in the direction of the arrow - or press it open.

The block will measure 8" x 8".

Repeat to make 80 blocks.



ASSEMBLING THE QUILT TOP

Refer to the Quilt Top Assembly Diagram on following page.

Lay out the blocks in ten rows of eight blocks each.

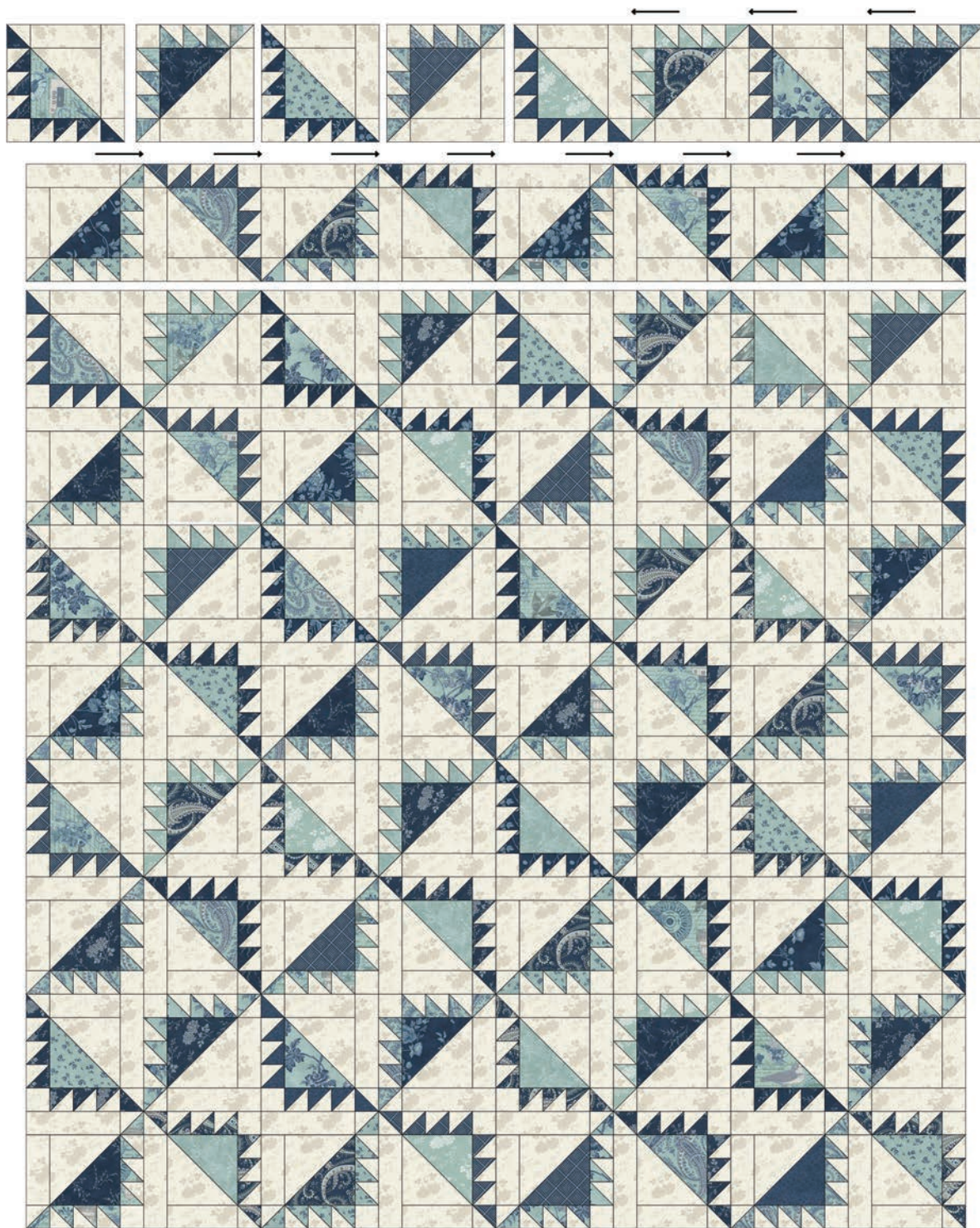
Join the blocks to make rows. Press the seams in the direction of the rectangles - away from the pieced strips. Or press them open.

Note: As some of the blocks are being joined, some of the seams will be pressed in the same direction. For those seams, we recommend clipping the seam. On one of the seams, find a point approximately 1/2" from the edge. Using a small pair of sharp scissors that cut at the tip, clip the seam to just shy of the seam/stitching line. Flip that 1/2" section of seam in the opposite direction for the seam junction.

Then join the rows to complete the quilt top. Press the seams in one direction - or press them open.

The quilt top will measure 60½" x 75½".

QUILT TOP ASSEMBLY DIAGRAM



moda

FINISHING THE QUILT TOP

Piece the 3" border strips. Press the seams open.

Cut the following lengths:

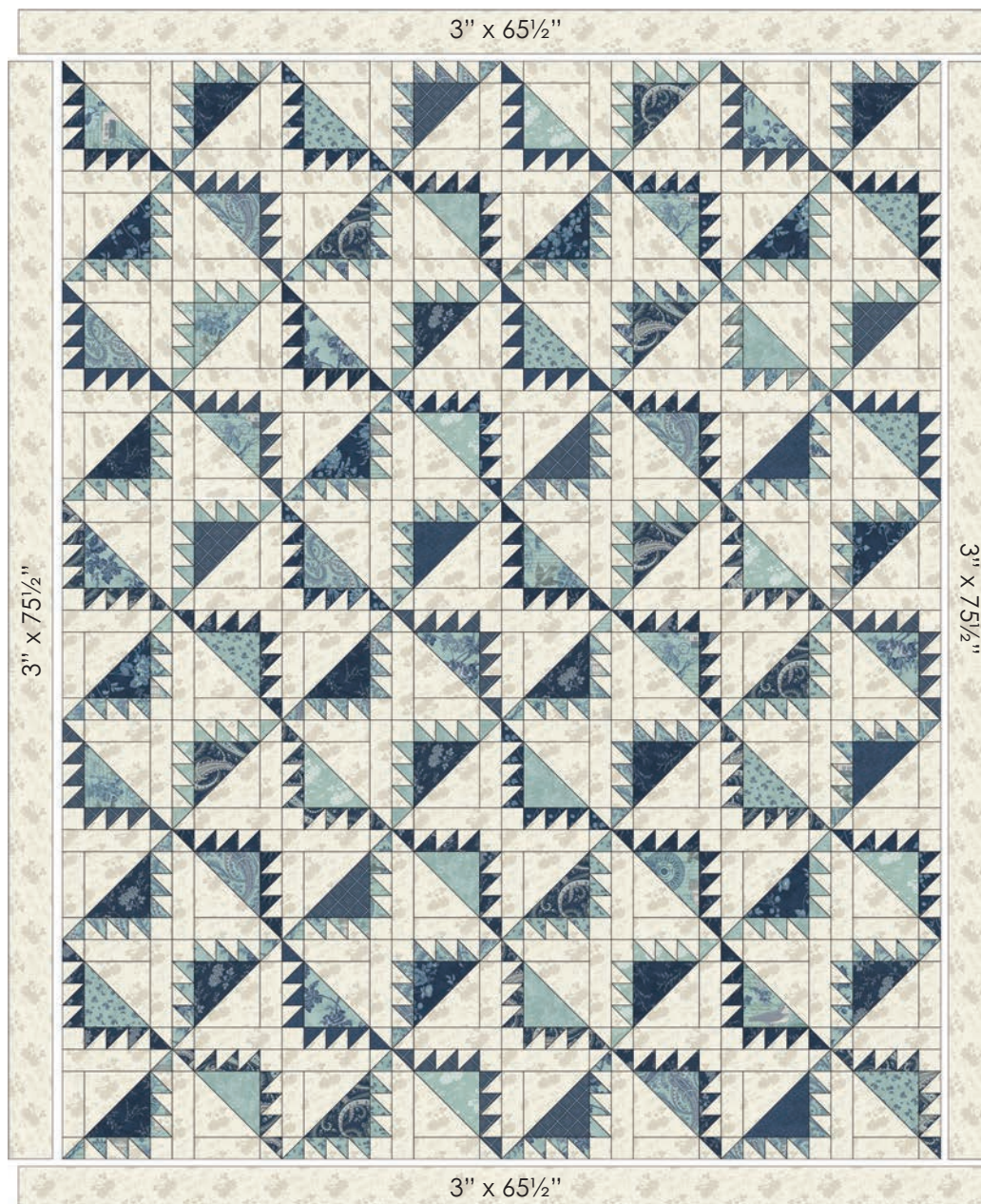
- **Side borders.** Cut 2 strips - 3" x 75½".
- **Top/Bottom borders.** Cut 2 strips - 3" x 65½".

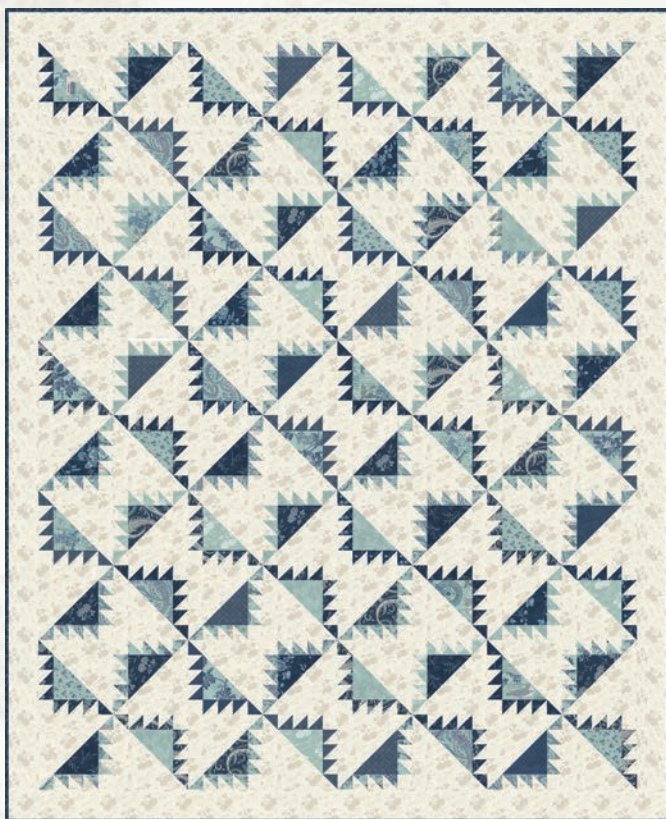
moda

Join the 3" x 75½" strips to the sides of the quilt top. Press the seams to the borders.

Join the 3" x 65½" strips to the top/bottom edges of the quilt top. Press the seams to the borders.

Quilt and bind as desired.





© 2021 moda fabrics • all rights reserved

FABRIC & SUPPLY REQUIREMENTS

Cake Mix Recipe 11
(CM11)



BACKGROUND:
5½ yards



44271-11

BINDING:
¾ yard



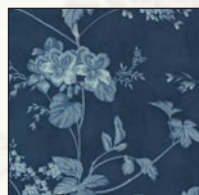
44274-14*

*Print used in both
blocks & binding.
1⅛ yard total needed.

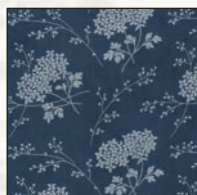
PRINTS: (11) ⅜ yard pieces in assorted prints for blocks



44270-13



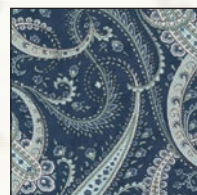
44270-14



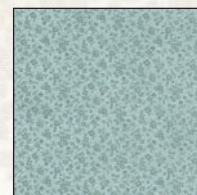
44271-14



44271-23



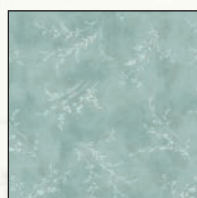
44272-14



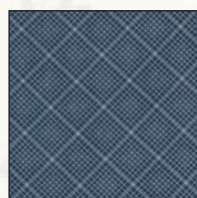
44273-13



44274-14*



44274-23



44275-14



44277-13



44279-13

BACKING: 4½ yards

moda **KIT**

THIS PROJECT SHEET IS ALSO AVAILABLE
AS A BOXED MODA KIT (KIT44270).

PS44270



Revised 2/2022