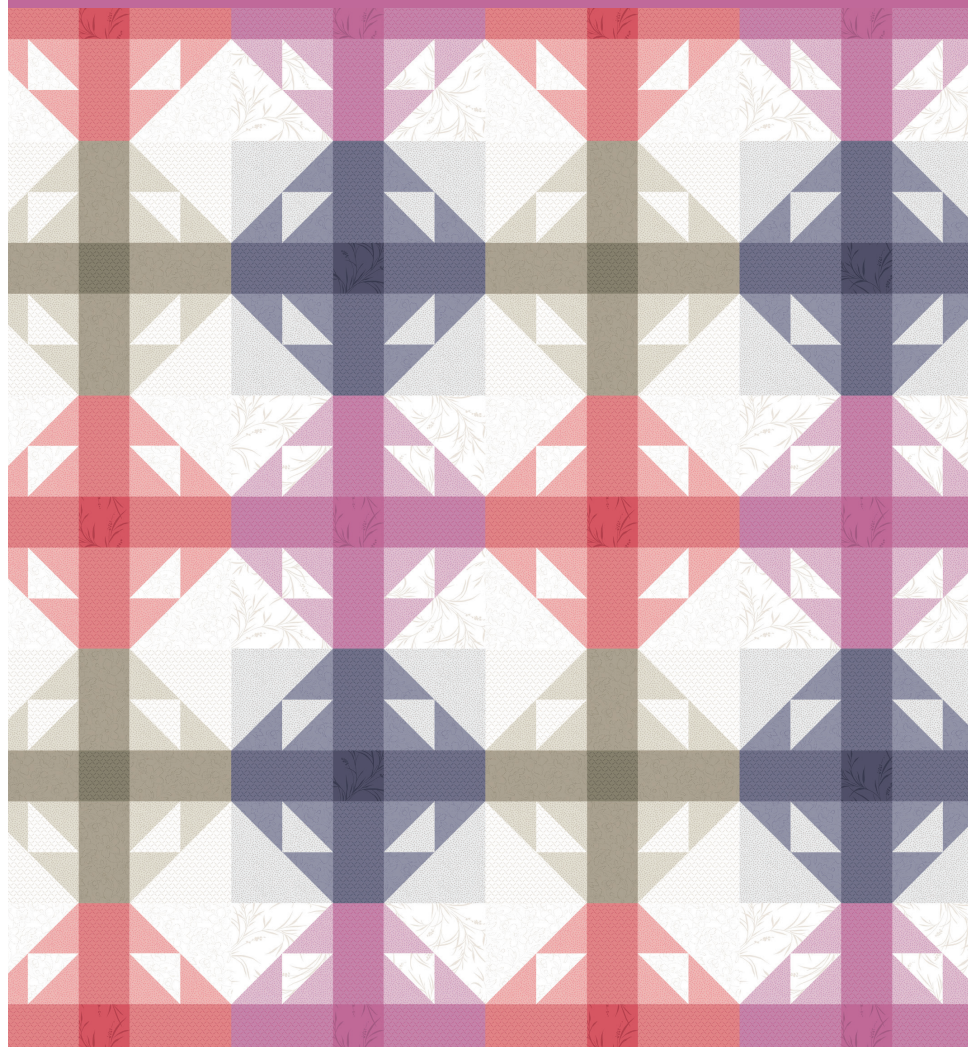


MAYWOOD  STUDIO

# Opal Essence Quilt

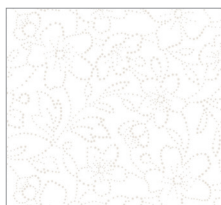


Opal Essence Quilt by Maywood Studio  
featuring the Opal Essence Collection

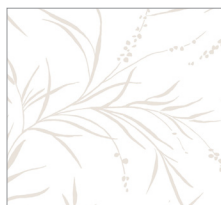
60" x 75"

[maywoodstudio.com](http://maywoodstudio.com)

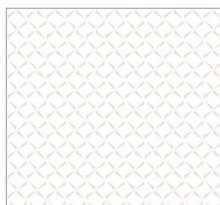
# opal essence



Fabric 1  
P201-UW



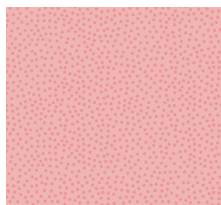
Fabric 2  
P203-UW



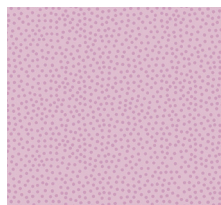
Fabric 3  
P202-UW



Fabric 4  
P200-K1



Fabric 5  
P200-C1



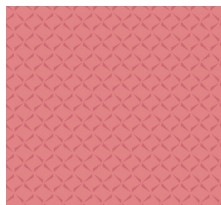
Fabric 6  
P200-P1



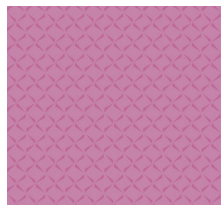
Fabric 7  
P200-A1



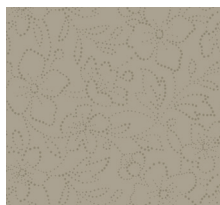
Fabric 8  
P201-V2



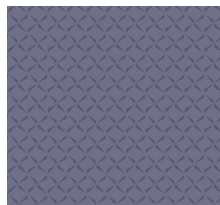
Fabric 9  
P202-C3



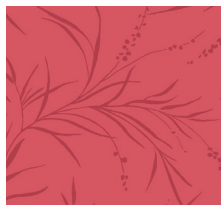
Fabric 10  
P202-P3



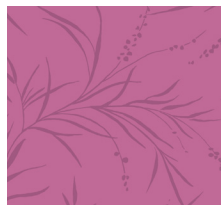
Fabric 11  
P201-A2



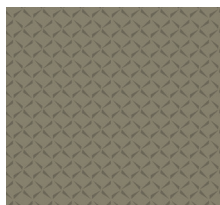
Fabric 12  
P202-V3



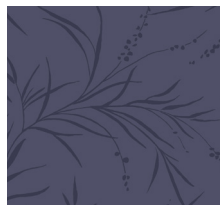
Fabric 13  
P203-C4



Fabric 14  
P203-P4



Fabric 15  
P202-A3



Fabric 16  
P203-V4



Binding P200-V1

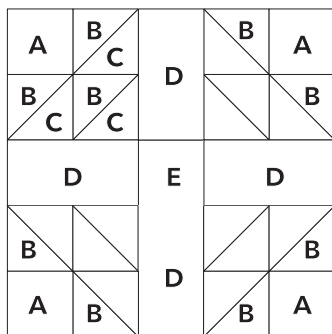
MAYWOOD  STUDIO

Maywood Studio makes every effort to make sure our patterns are accurate.  
Check for updates at [maywoodstudio.com/projects](http://maywoodstudio.com/projects)

## Fabric Requirements

Fabric 1	P201-UW	3/4 yard
Fabric 2	P203-UW	3/4 yard
Fabric 3	P202-UW	1/2 yard
Fabric 4	P200-K1	1/2 yard
Fabric 5	P200-C1	5/8 yard
Fabric 6	P200-P1	5/8 yard
Fabric 7	P200-A1	1/2 yard
Fabric 8	P201-V2	1/2 yard
Fabric 9	P202-C3	1/2 yard
Fabric 10	P202-P3	1/2 yard
Fabric 11	P201-A2	1/2 yard
Fabric 12	P202-V3	1/2 yard
Fabric 13	P203-C4	Fat 8th
Fabric 14	P203-P4	Fat 8th
Fabric 15	P202-A3	Fat 8th
Fabric 16	P203-V4	Fat 8th
Binding	P200-V1	1/2 yard
Backing	108" wide	2 yards
	44/45" wide	4 yards

WOF - Width of Fabric  
 LOF - Length of Fabric  
 RST - Right Sides Together  
 HST - Half Square Triangle



15-1/2" x 15-1/2" unfinished  
 15" x 15" finished

## Cutting

Fabrics 1, 2  
 From each cut  
 (2) 3-1/2" x WOF strips. Subcut into:  
 A: (24) 3-1/2" x 3-1/2" squares  
 (4) 4-1/2" x WOF strips. Subcut into:  
 B: (36) 4-1/2" x 4-1/2" squares (for HSTs)

Fabrics 3, 4  
 From each cut  
 (1) 3-1/2" x WOF strip. Subcut into:  
 A: (16) 3-1/2" x 3-1/2" squares  
 (3) 4-1/2" x WOF strips. Subcut into:  
 B: (24) 4-1/2" x 4-1/2" squares (for HSTs)

Fabrics 5, 6  
 From each cut  
 (4) 4-1/2" x WOF strips. Subcut into:  
 C: (36) 4-1/2" x 4-1/2" squares (for HSTs)

Fabrics 7, 8  
 From each cut  
 (3) 4-1/2" x WOF strips. Subcut into:  
 C: (24) 4-1/2" x 4-1/2" squares (for HSTs)

Fabrics 9, 10  
 From each cut  
 (2) 6-1/2" strips. Subcut into:  
 D: (24) 6-1/2" x 3-1/2" rectangles

Fabrics 11, 12  
 From each cut  
 (2) 6-1/2" strips. Subcut into:  
 D: (16) 6-1/2" x 3-1/2" rectangles

Fabric 13, 14  
 From each cut  
 E: (6) 3-1/2" x 3-1/2" squares

Fabric 15, 16  
 From each cut  
 E: (4) 3-1/2" x 3-1/2" squares

Binding  
 Cut (7) strips 2-1/4" x WOF

## Opal Essence Quilt Instructions

Please read all instructions before you begin. Seam allowance is 1/4" unless otherwise stated. Fabric is abbreviated as 'F'. For example, F1 refers to Fabric 1. Press in the direction of arrows.

Use a light sizing or starch on pieces to help prevent stretching along the diagonal edges.

Use the  check boxes to mark each step as you complete it.

There are 4 color groups: Coral, Pink, Brown, Purple.

### Make the HST units

(Half Square Triangles)

Gather the B and C squares.

1. Mark a diagonal line from corner to corner on the wrong side of the F1-B squares.

2. Place a F1-B square, RST, on a F5-C square. Sew 1/4" away on either side of the marked line.

3. Cut on the marked line. Press towards F5. Make 36 for a total of 72 HSTs.

Repeat the steps to make these HSTs:

Pink: F2-B - F6-C. Make 36 for 72 HSTs

Brown: F3-B - F7-C. Make 24 for 48 HSTs

Purple: F4-B - F8-C. Make 24 for 48 HSTs

### Assemble the blocks

Gather the A squares, D rectangles, and E squares.

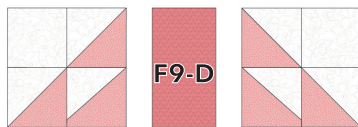
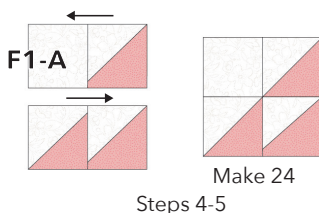
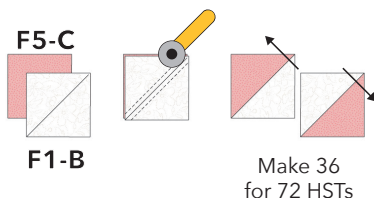
4. Sew the A squares to the coordinating B/C HST units. Press toward A.

5. Sew the B/C HST units into pairs. Press as shown.

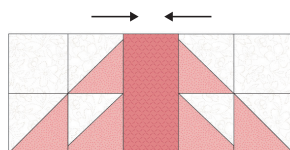
6. Sew a step 5 unit to a D rectangle. Press towards D.

7. Sew a step 5 unit to the other side of the step 6 unit. Make sure to rotate as illustrated. Press towards D.

The Coral group is illustrated in these steps



Steps 6-7

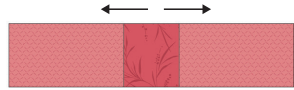


Make 12

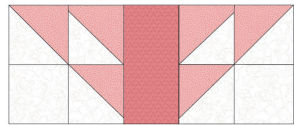
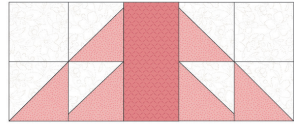
□ 8. Sew a D rectangle to opposite sides of an E square. Press towards D.



□ 9. Sew the Step 7 units to opposite sides of the Step 8 unit. Press as shown.

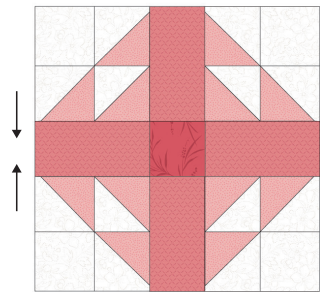


Step 8



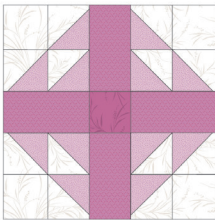
Step 9

Coral



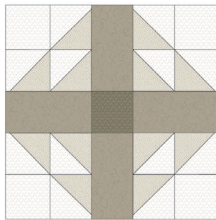
Make 6

Pink



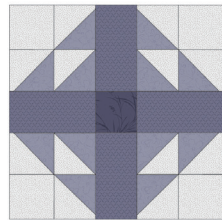
Make 6

Brown



Make 4

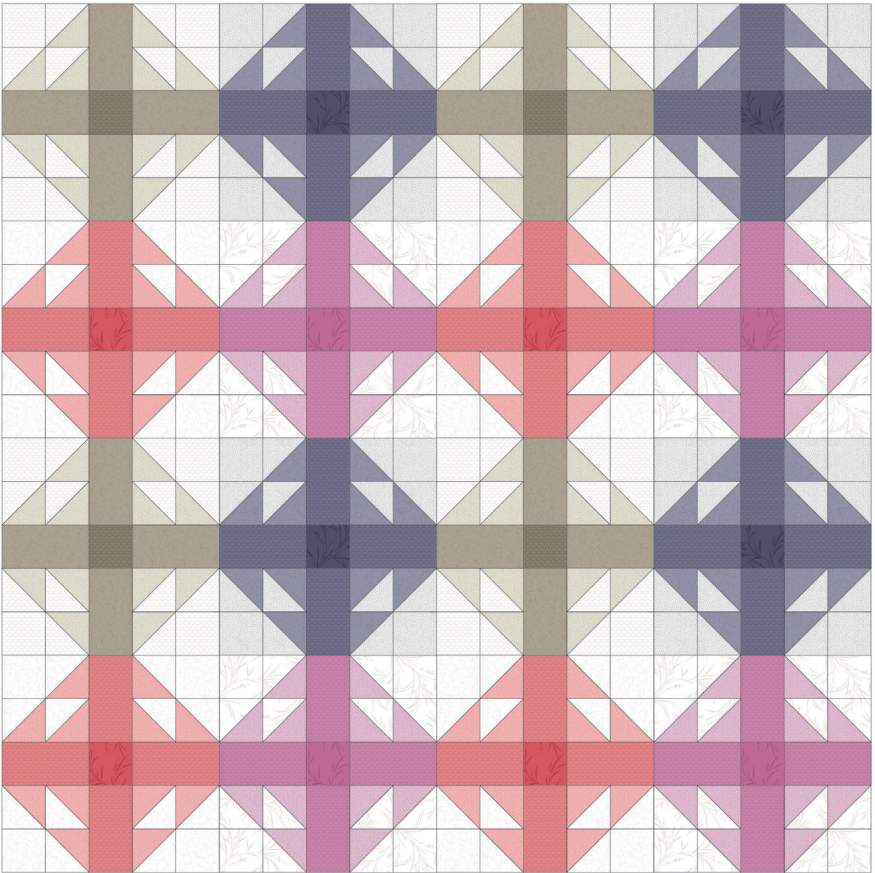
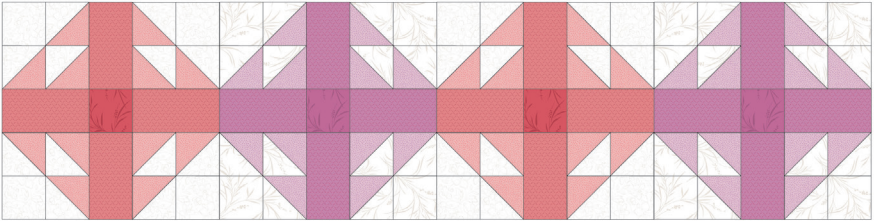
Purple



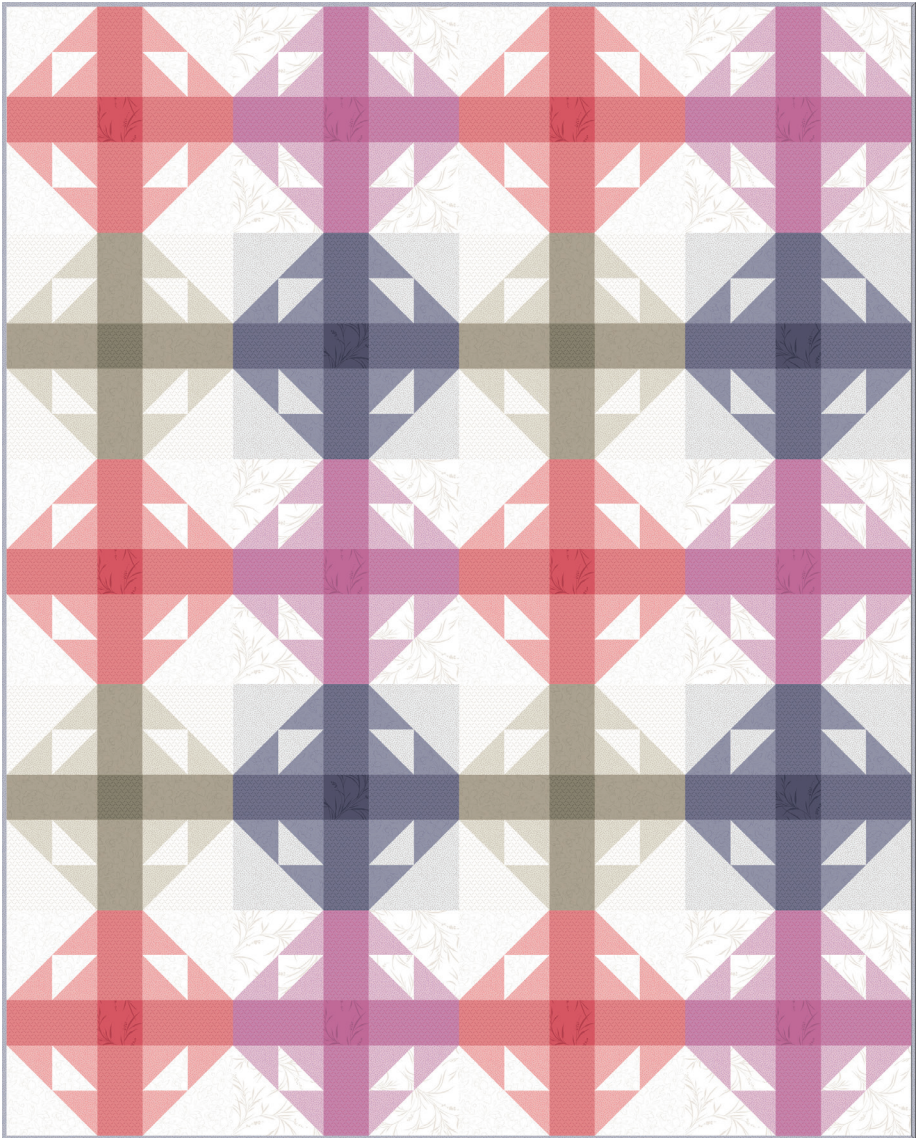
Make 4

## Quilt Top and Finishing

1. Sew the blocks together into rows as illustrated. Press to nest.
2. Sew row to row. Press in one direction.

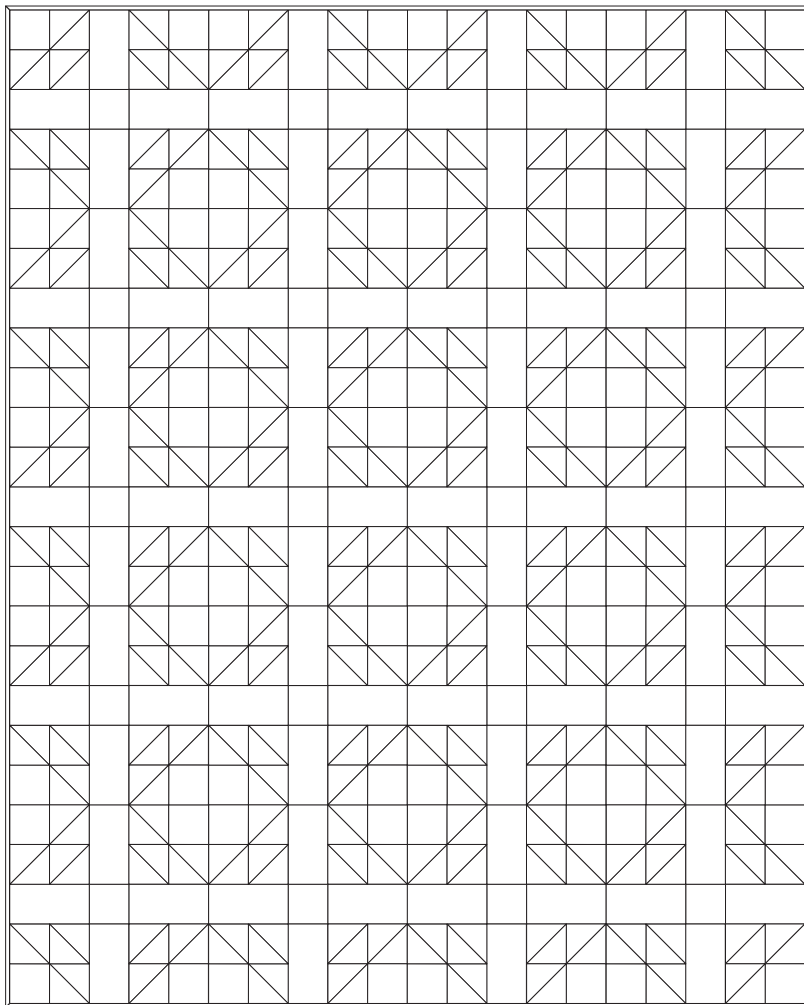


❑ 3. Layer the backing (wrong side up), batting and quilt top (right side up). Baste layers to secure. Quilt as desired. Trim the excess backing and batting.



❑ 4. Sew the binding strips together into one continuous strip. Press in half length-wise. Sew the binding to the quilt top with a 1/4" seam allowance. Turn the binding to the back side of the quilt and stitch down by hand with matching thread.

## Opal Essence Quilt Planning Diagram & Fabric Tags



<b>F1-A</b> (24) 3-1/2" squares	<b>F1-B</b> (36) 3-1/2" squares	<b>F5-C</b> (36) 4-1/2" squares	<b>F9-D</b> (24) 6-1/2" x 3-1/2" rectangles	<b>F13-E</b> (6) 3-1/2" squares
<b>F2-A</b> (24) 3-1/2" squares	<b>F2-B</b> (36) 3-1/2" squares	<b>F6-C</b> (36) 4-1/2" squares	<b>F10-D</b> (24) 6-1/2" x 3-1/2" rectangles	<b>F14-E</b> (6) 3-1/2" squares
<b>F3-A</b> (16) 3-1/2" squares	<b>F3-B</b> (24) 4-1/2" squares	<b>F7-C</b> (24) 4-1/2" squares	<b>F11-D</b> (16) 6-1/2" x 3-1/2" rectangles	<b>F15-E</b> (4) 3-1/2" squares
<b>F4-A</b> (16) 3-1/2" squares	<b>F4-B</b> (24) 4-1/2" squares	<b>F8-C</b> (24) 4-1/2" squares	<b>F12-D</b> (16) 6-1/2" x 3-1/2" rectangles	<b>F16-E</b> (4) 3-1/2" squares