

I LOVE DOGS PANEL QUILT

Riley Blake
DESIGNS



COOPER 
Bella BLVD™

I LOVE DOGS PANEL QUILT



Finished quilt: approx. 62" x 62"

©2021 Riley Blake Designs.

Fabric: Cooper by Bella BLVD for Riley Blake Designs

INSTRUCTIONS

Please read through all the directions first before starting and assume $\frac{1}{4}$ " seam allowance. Sew with right sides together unless otherwise stated. Press all seams in the direction of the arrows on the diagrams. Yardage is based on a 42" width of fabric.

WOF: Width of Fabric

LOF: Length of Fabric

RST: Right Sides Together

HST: Half-Square Triangle

SNF: Stitch and Flip

This quilt pattern is a beginner level quilt pattern. Basic knowledge of quilt piecing techniques and terminology is required. Please visit our website at www.rileyblakedesigns.com/pattern-updates to check for any updates before beginning this project. Have fun!

FABRIC REQUIREMENTS

- 1 – I Love Dogs Panel (P11405-AQUA)
- 1 yard Aqua Main (C11400-AQUA)
- $1\frac{3}{8}$ yards Blue Pawesome (C11404-BLUE)
(includes $\frac{1}{2}$ yard for binding)
- $\frac{1}{8}$ yard Red Words (C11402-RED)
- $\frac{1}{8}$ yard Aqua Dogs (C11401-AQUA)
- $\frac{7}{8}$ yard Multi Pawesome (C11404-MULTI)
- $\frac{3}{8}$ yard Green Bones (C11403-GREEN)

CUTTING DIRECTIONS

Note: Please take note of cutting direction of strips, either WOF or LOF.

I Love Dogs Panel

Fussy cut (4) $17\frac{1}{2}$ " squares.



Aqua Main

Cut (6) 5" x WOF strips



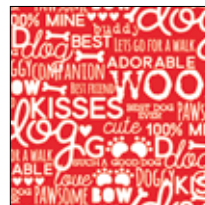
Blue Pawesome

Cut (5) $2\frac{1}{4}$ " x WOF

- Subcut (20) $2\frac{1}{4}$ " x $10\frac{1}{2}$ " rectangles (B)

Inner Border: Cut (6) $1\frac{1}{2}$ " x WOF strips

Binding: Cut (7) $2\frac{1}{2}$ " X WOF strips



Red Words

Cut (10) $4\frac{1}{8}$ " squares (C)



Aqua Dogs

Cut (10) $4\frac{1}{8}$ " squares (A)

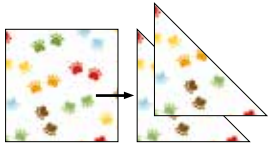
I LOVE DOGS PANEL QUILT



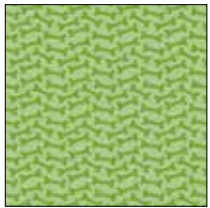
Multi Pawsome

Cut (2) 5 7/8" x WOF strips

- Subcut into (10) 5 7/8" squares (D)
- Sub cut each square on the diagonal once



Cut (20) 4" squares (F)



Green Bones

Cut (5) 2 1/4" x WOF strips

- Subcut (20) 2 1/4" x 10 1/2" rectangles (E)

ASSEMBLE THE SQUARE-IN-A-SQUARE BLOCK

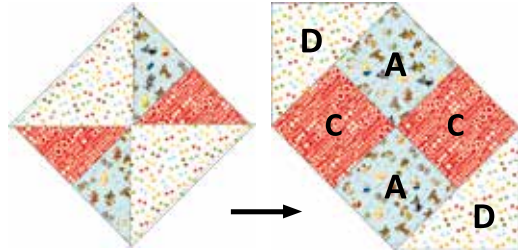
1. Pin and sew an A-square to a C-square. Repeat in the opposite direction with a C-square to an A-square as shown. Press seams to the darker fabric.



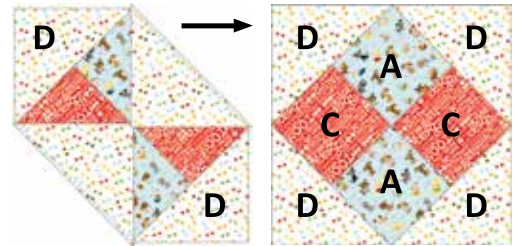
2. Pin and sew both AC-units together making sure to pin at the intersecting seam. The seams will nest together nicely as they are both pressed in opposite directions. Press the seam in one direction. Unit should measure 7 3/4" x 7 3/4" square.



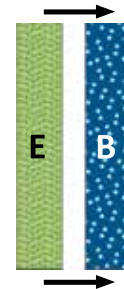
3. Next take (2) D-triangles, center and pin them on opposite sides of the AC-unit. Sew along both edges as shown. Flip the triangles open and press the seams. Trim off the dog ears (the triangle edge that extends past the square).



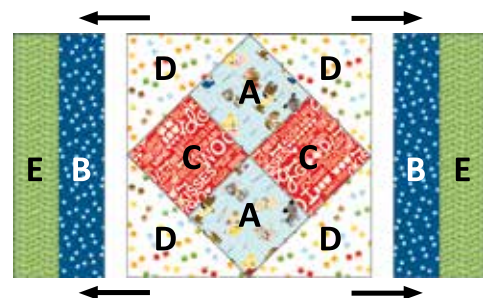
4. Repeat the center, pin, sew, trim and press of the remaining (2) D-triangles. The Square-in-a-Square unit should measure 10 1/2" x 10 1/2" square. Set aside.



5. Pin and sew an E-rectangle to a B-rectangle and press seams to the darker fabric. Make 4.

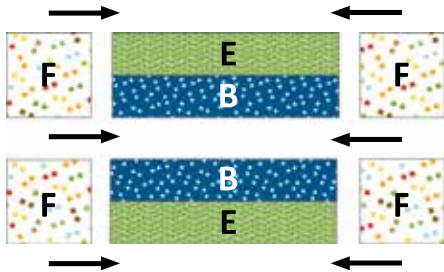


6. Take 2 BE-rectangles and pin and sew them to either side of the Square-in-a-Square unit as shown. Note the (blue) B-rectangles are both touching the inside of the block.

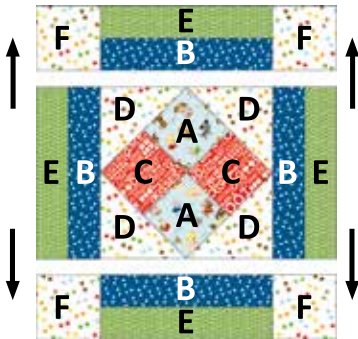


I LOVE DOGS PANEL QUILT

7. Take the remaining (2) BE-rectangles and sew an F-square on each end of both rectangles as shown. Press seams.



8. Pin and sew the final rectangle units to the top and bottom of the Square-in-a-Square unit as show. Press seams away from the center. The Square-in-a-Square block should measure 17½" x 17½" square.



9. Repeat this process (4) more times to make a total of (5) Square-in-a-Square blocks. Set aside.



QUILT CENTER

Refer to the quilt layout diagram for block placement.

Sew together 2 Square-in-a-Square blocks, alternating with one panel square, for the first and third rows.

For the second row, sew together 2 panel squares, alternating with one Square-in-a-Square block.

Sew the rows together to complete the quilt center.



BORDERS

Sew side borders first. Seam allowances vary so measure through the center of the quilt before cutting borders. Press seam allowances towards the borders.

Border 1

Side borders should be 1½" x 51½". Top and bottom borders should be 1½" x 53½".

Border 2

Side borders should be 5" x 53½". Top and bottom borders should be 5" x 62½".

Finish quilt by layering the quilt top, batting and back. Bind with the Blue Pawsome strips. Enjoy and share your quilt using the hashtags #rileyblakedesigns, #cooperfabric and #iloverileyblake.

I LOVE DOGS PANEL QUILT

QUILT LAYOUT

