

MAYWOOD  STUDIO

Curio Cabinet Quilt



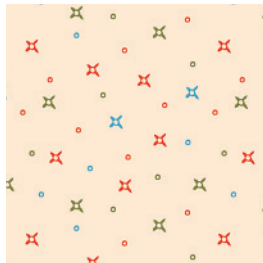
Curio Cabinet Quilt by Maywood Studio
featuring the Curio Cabinet Collection by Maywood Studio

64" x 72"

#madewithmaywood
maywoodstudio.com



MAYWOOD STUDIO



Fabric 1
10138-EZ



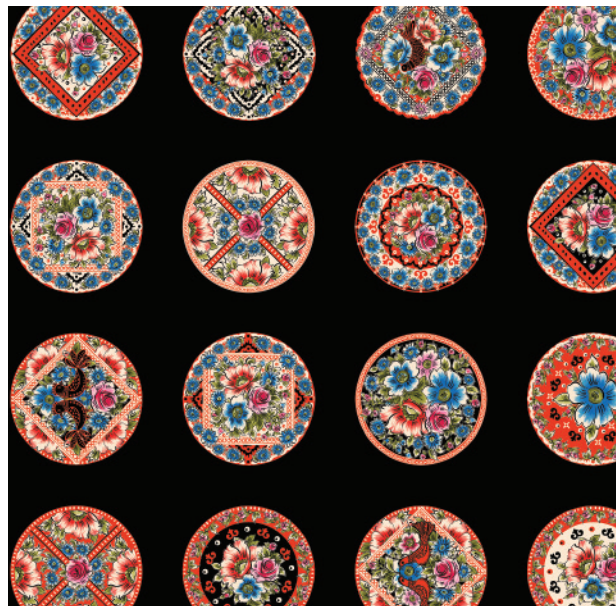
Fabric 2
10137-JE



Fabric 3
10134-R



Fabric 4
10135-B



Fabric 5
10131-J



Fabric 6
10132-E



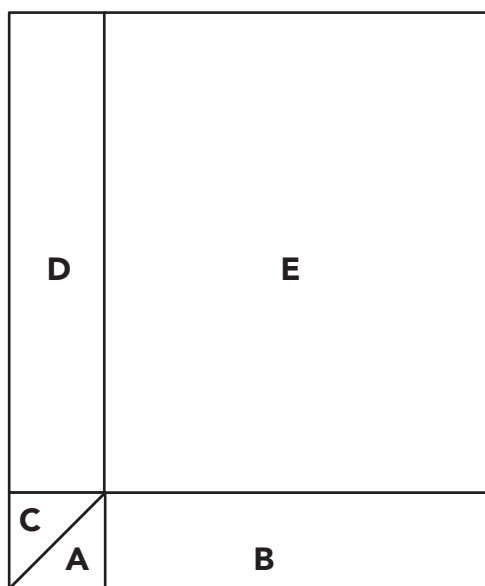
Fabric 7
10136-RK

Fabric Requirements

Fabric 1	10138-EZ	1/2 yard
Fabric 2	10137-JE	1/2 yard
Fabric 3	10134-R	1 yard
Fabric 4	10135-B	5/8 yard
Fabric 5	10131-J	3/4 yard *16 circles
Fabric 6	10132-E	2-1/4 yard
Fabric 7	10136-RK	1/2 yard
Backing	108" wide back	2-1/4 yards
	or 44/45" wide	4-1/4 yards

Additional Supplies:

- fabric marking tool
- fabric scissors
- needle and thread
- card stock for printing



Block is 10" x 12" finished
Make 16

Cutting

Finished Size 64" x 72"

Fabric 1

Cut (1) 3" x WOF strip. Subcut into:

A: (16) 3" squares

Cut (1) 8.5" x WOF strips. Subcut into:

B: (16) 2-1/2" x 8-1/2" rectangles

Fabric 2

Cut (1) 3" x WOF strip. Subcut into:

C: (8) 3" squares

Cut (1) 10-1/2" x WOF strips. Subcut into:

D: (16) 2-1/2" x 10-1/2" rectangles

Fabric 3

Cut (4) 8-1/2" x WOF strips. Subcut into:

E: (16) 8-1/2" x 10-1/2" rectangles

Fabric 4

Cut (12) 1-1/2" x WOF strips.

From 4 strips cut

F: (12) 1-1/2" x 12-1/2" rectangles

Sew the remaining strips together end to end. Subcut into:

(3) 1-1/2" x 43-1/2" strips (sashing)

(2) 1-1/2" x 51-1/2" strips (inner side borders)

(2) 1-1/2" x 45-1/2" strips (top & bottom sashing)

Fabric 5

Cut (16) 6-1/2" Circles

Fabric 6 Border Strips

Cut LOF

Sides: Cut (2) 9-3/4" x 77" rectangles

Top & Bottom: Cut (2) 9-3/4" x 69" rectangles

Fabric 7

Binding

Cut (7) strips 2-1/4" x WOF

WOF - Width of Fabric

LOF - Length of Fabric

RST - Right Sides Together

HST - Half Square Triangle

Curio Cabinet Quilt Instructions

Please read all instructions before you begin. Seam allowance is 1/4" unless otherwise stated. Fabric is abbreviated as 'F'. For example, F1 refers to Fabric 1. Press in the direction of arrows. Use a light sizing or starch on pieces to help prevent stretching along the diagonal edges. Use the check boxes to mark each step as you complete it.

HST (Half Square Triangle) units

Gather (8) F1-A squares, (8) F2-C squares.

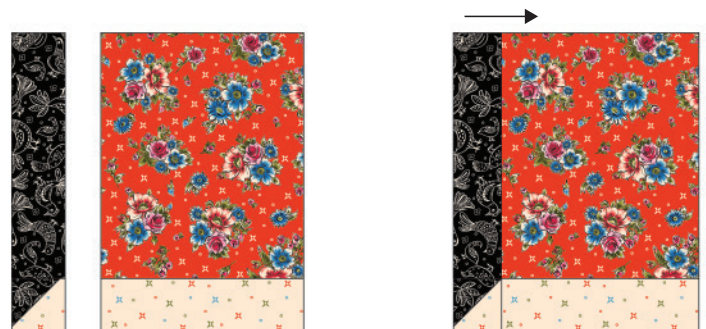
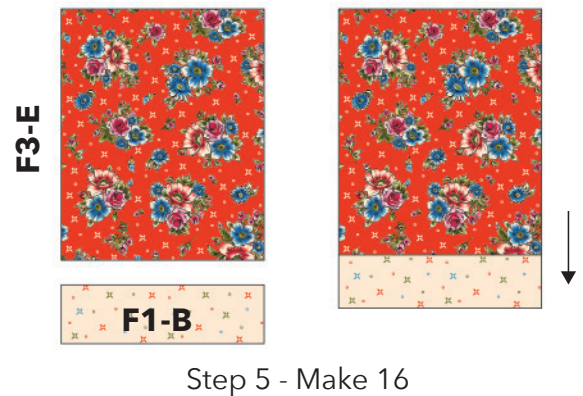
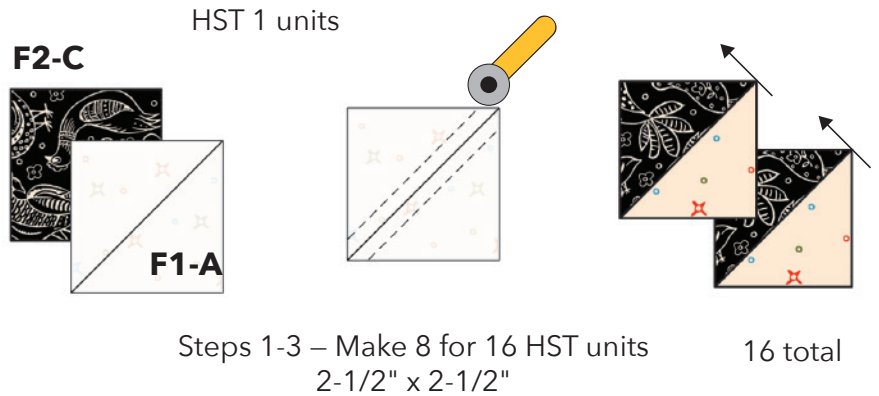
- 1. Mark a diagonal line from corner to corner on the wrong side of the F1-A squares.
- 2. Place the A square, RST over a F2-C square. Sew 1/4" away from the marked line on either side.
- 3. Cut on the original marked line creating 2 pieces. Press HST units towards F2. Square to 2-1/2".

Make 8 for a total of 16 HST units.

Blocks

Gather (16) F2-D rectangles, (16) F3-E rectangles, (16) F1-B rectangles.

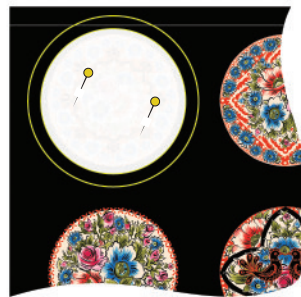
- 4. Sew a HST unit to the end of a F2-D rectangle. Press. Make 16.
- 5. Sew a F1-B rectangle to a F3-E rectangle. Press. Make 16.
- 6. Sew the Step 4 unit to the left side of the step 5 unit. Press. Make 16.



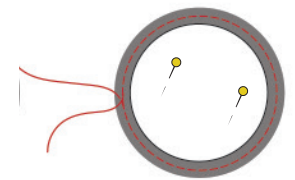
Applique

Gather Fabric 5 and the 6" circle template p. 8.

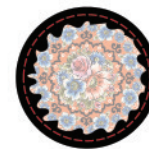
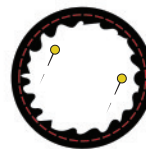
- ❑ 7. Cut out the circle template.
- ❑ 8. Pin the circle template to F-5 and mark a line 1/4" away from the edge of the template. Your circles will measure 6-1/2".
- ❑ 9. Pin the template to the wrong side of the fabric.
- ❑ 10. With needle and thread, sew a running stitch around the perimeter of the circle. Do not remove the template.
- ❑ 11. Gently pull the stitches to gather the seam allowance. Remove the template. Press flat.
- ❑ 12. Pin the circle to the block as illustrated. Place approximately 1" of the circle in the lower section. Sew the circle to the blocks using your preferred hand-sewing or machine stitch. Make 16.



Step 8 - Make 16



Step 9-10



Step 11

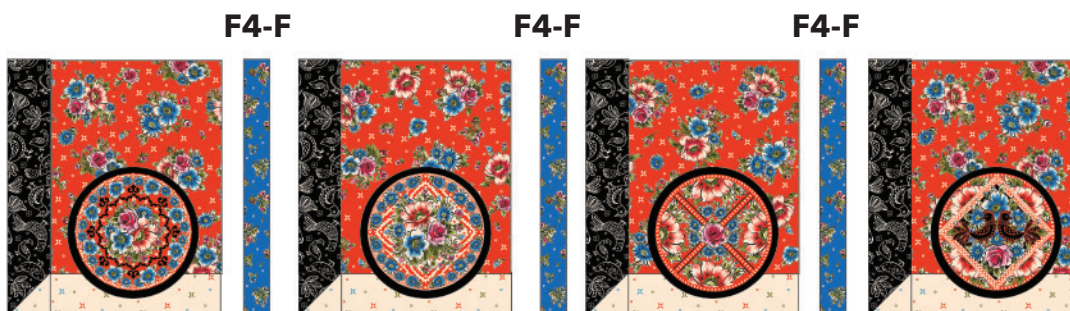
Sew the Rows

Gather (12) F4-F rectangles

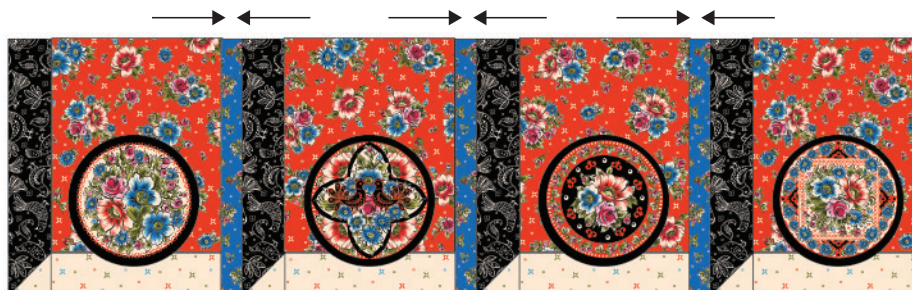
- ❑ 13. Lay out (4) rows of (4) blocks and (3) F4-F rectangles. Sew into rows.
- ❑ 14. Sew the blocks into 4 rows of 4. Press towards F4.



Step 12



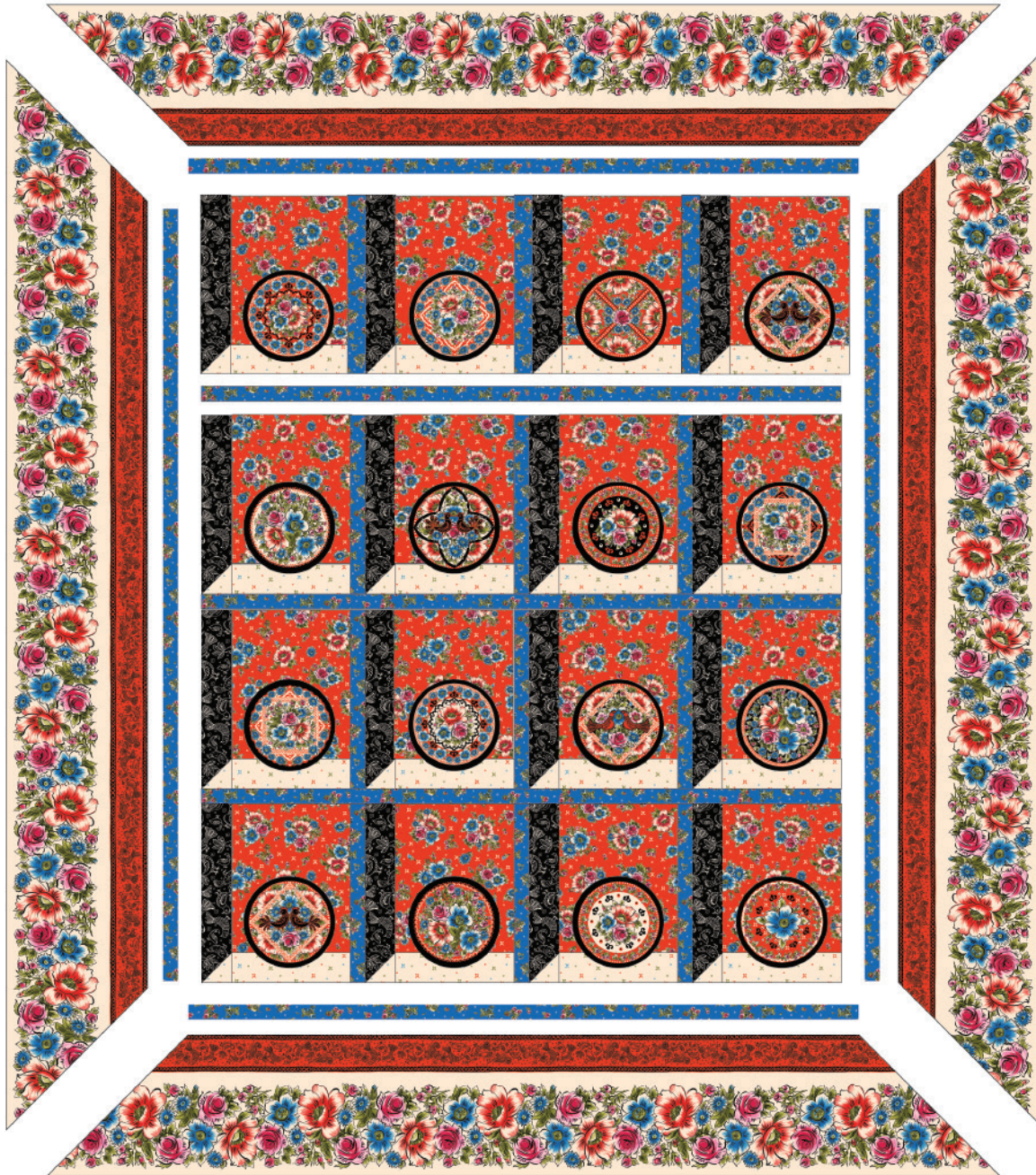
Steps 13-14



Quilt Top and Finishing

Gather the F4- sashing and border strips.

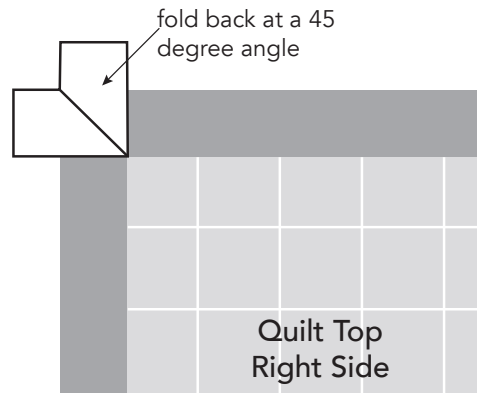
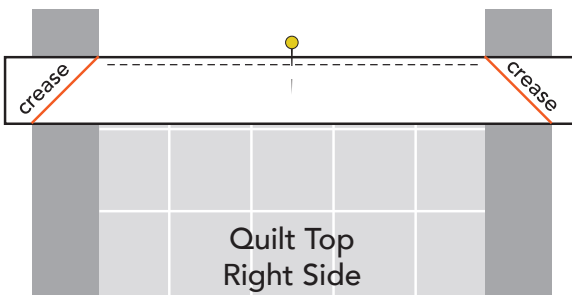
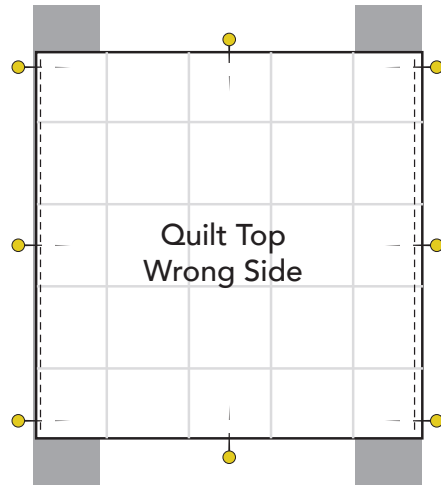
- ❑ 15. Sew F4 sashing strips between each row. Press towards sashing.
- ❑ 16. Sew the F4 inner borders to the sides of the quilt. Press toward borders.
- ❑ 17. Sew the F4 inner borders to the top and bottom of the quilt. Press toward borders.
- ❑ 18. Sew the outer borders. Follow the instructions on p.7.



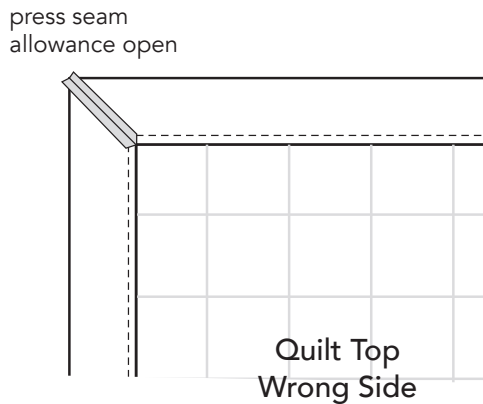
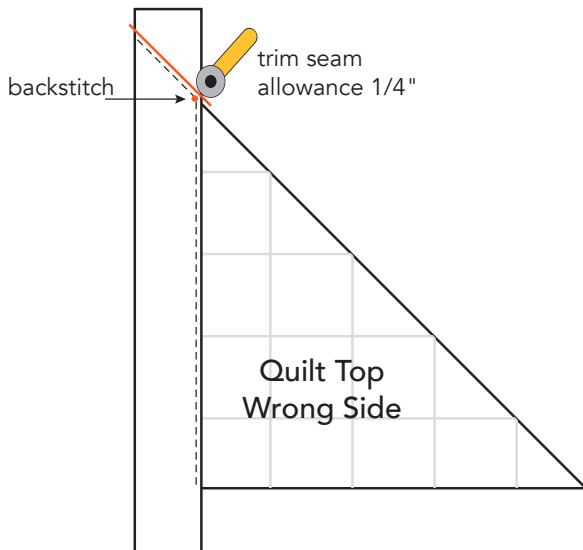
- ❑ 19. Layer the backing (wrong side up), batting and quilt top (right side up). Baste layers to secure. Quilt as desired. Trim the excess backing and batting.
- ❑ 20. Sew the binding strips together into one continuous strip. Press in half length-wise. Sew the binding to the quilt top with a 1/4" seam allowance. Turn the binding to the back side of the quilt and stitch down by hand with matching thread.

Mitered Borders

1. Mark the centers of each side of the quilt top with a pin.
2. Mark the centers of the border strips with a pin.
3. Match the centers of the border strips to the sides of the quilt and pin, RST. Sew together, starting and stopping 1/4" away from the edges of the quilt top. Backstitch to secure. Press seams toward borders.
4. Repeat to sew the top and bottom border strips to the quilt top.



5. Fold each border end back at a 45 degree and press, creating a crisp crease.



6. Fold the quilt on a diagonal, RST. Line up the raw edges of the border strips and pin in place along the crease. Stitch together on the crease, stopping at the 1/4" seam. Backstitch to secure. Double check that your corner lays flat when you open it up. Trim seam allowance to 1/4" and press open.

Curio Cabinet 6" Circle Template

Print this template at 100%. For best results print on cardstock.
Measure the 1" test square before cutting. Cut on the solid lines.
Follow the applique instructions on p.5 of this pattern.

