

MAYWOOD  STUDIO

# *Garden Stroll Quilt*



**Garden Stroll Quilt by Maywood Studio**  
featuring the Garden Stroll Collection by Kris Lammers

67" x 67"

#madewithmaywood  
maywoodstudio.com

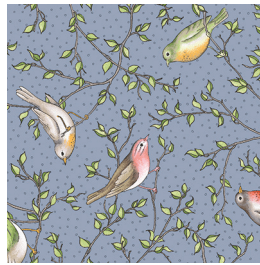
*Garden Stroll*  
by Kris Lammers



*Garden Stroll*  
by Kris Lammers



Fabric 1  
10123-K



Fabric 2  
10125-K2



Fabric 3  
10128-E



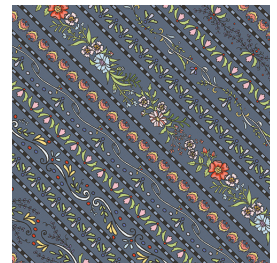
Fabric 4  
10122-P



Fabric 5  
10125-G2



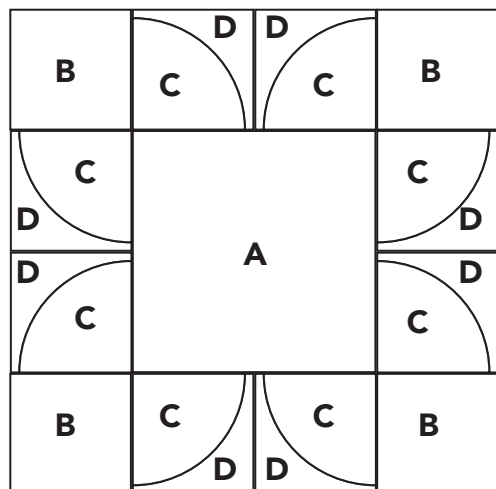
Fabric 6  
10121-K



Fabric 7  
10126-K

## Fabric Requirements

Fabric 1	10123-K	1 yards
Fabric 2	10125-K2	1/2 yard
Fabric 3	10128-E	1-1/4 yard
Fabric 4	10122-P	3/4 yard
Fabric 5	10125-G2	1/2 yard
Fabric 6	10121-K borders	1-3/8 yard
Fabric 7	10126-K binding is cut 2-1/4" x WOF	1/2 yard
Backing	108" wide back	2-1/4 yards
	or 44/45" wide	4-1/4 yards



Flower Block  
12-1/2" x 12-1/2"  
(12" finished)

## Cutting

Finished Size 67" x 67"

### Fabric 1

Cut (1) 6.5" x WOF strips. Subcut into:  
A: (5) 6.5" squares (Flower block centers)  
Cut (6) 3.5" x WOF strips. Subcut into:  
B: (64) 3-1/2" squares  
(20) Flower blocks and (44) HST corners)

### Fabric 2

Cut (4) 3.5" x WOF strips. Subcut into:  
C: (40) 3-1/2" squares (quarter circles)

### Fabric 3

Cut (4) 3-3/4" x WOF strips. Subcut into:  
D: (40) 3-3/4" squares (quarter circles)  
Cut (4) 7" x WOF strips. Subcut into:  
E: (22) 7" squares (HST units)

### Fabric 4

Cut (2) 7" x WOF strips. Subcut into:  
F: (12) 7" squares (HST units)  
Cut (1) 9-3/4" x WOF strip. Subcut into:  
G: (4) 9-3/4" squares (Border corners)

### Fabric 5

Cut (2) 7" x WOF strips. Subcut into:  
H: (10) 7" squares (HST units)

### Fabric 6

Cut (4) 9-3/4" x 48-1/2" rectangles from the LOF border strips.

### Fabric 7

Binding  
Cut (7) strips 2-1/4" x WOF

WOF - Width of Fabric  
LOF - Length of Fabric  
RST - Right Sides Together  
HST - Half Square Triangle

## Garden Stroll Quilt Instructions

Please read all instructions before you begin. Seam allowance is 1/4" unless otherwise stated. Fabric is abbreviated as 'F'. For example, F1 refers to Fabric 1. Press in the direction of arrows. Use a light sizing or starch on pieces to help prevent stretching along the diagonal edges. Use the ☐ check boxes to mark each step as you complete it.

### HST (Half Square Triangle) units

#### HST 1 units

Gather (12) F3-E squares, (12) F4-F squares, and (24) F1-B squares

☐ 1. Mark a diagonal line from corner to corner on the wrong side of the F4-F squares.

☐ 2. Place the F square, RST over a F3-E square. Sew 1/4" away from the marked line on either side.

☐ 3. Cut on the original marked line creating 2 pieces. Press HST units in the direction of the arrows. Square to 6-1/2".

Make 12 for a total of 24 HST units.

☐ 4. Mark a diagonal line from corner to corner on the wrong side of the F1-B squares.

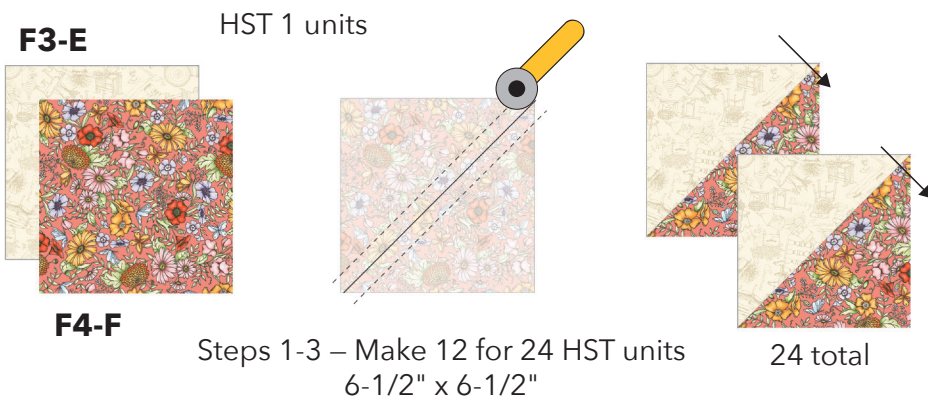
☐ 5. Place the F1-B square, RST over the F4 side of an HST unit. Sew on the marked line.

☐ 6. Cut 1/4" away from the sewn line. Flip the corner over and press. Square to 6-1/2".

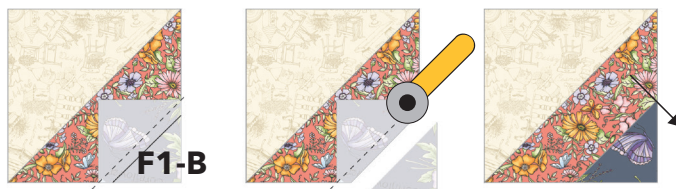
☐ 7. Sew (3) HST 1 units together to create a row. Make sure to orient the units as illustrated. Press.

☐ 8. Sew (3) HST 1 units together facing the opposite direction to create a mirror image row. Press.

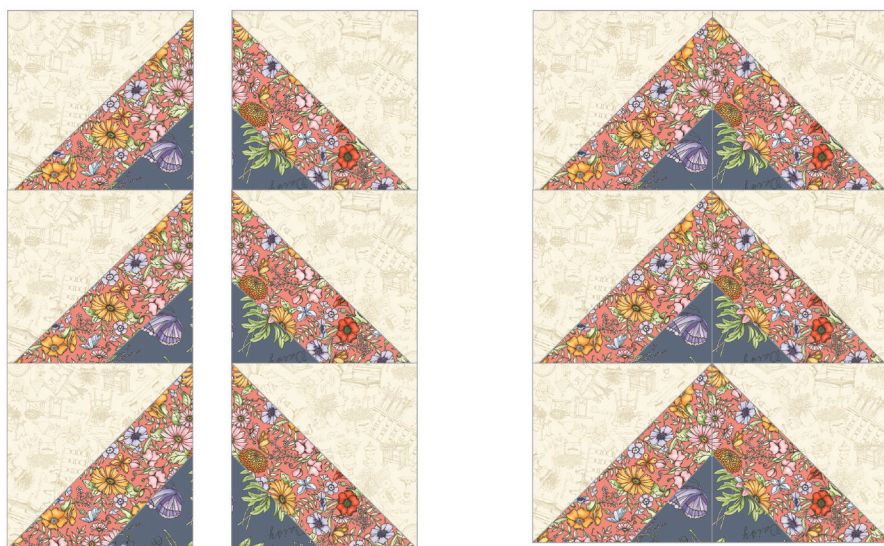
☐ 9. Sew the mirror image rows together into 4 sets. Press.



Steps 1-3 – Make 12 for 24 HST units  
6-1/2" x 6-1/2"



Steps 4-6 – Make 24  
6-1/2" x 6-1/2"



Steps 7-8 – Make 4 of each

Step 9 – Make 4



## HST 2 units

Gather (10) F3-E squares, (10) F5-H squares, and (20) F1-B squares

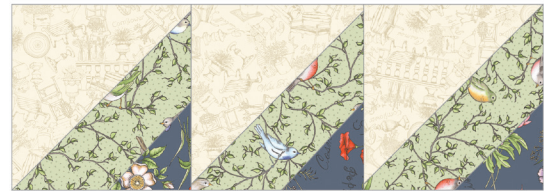
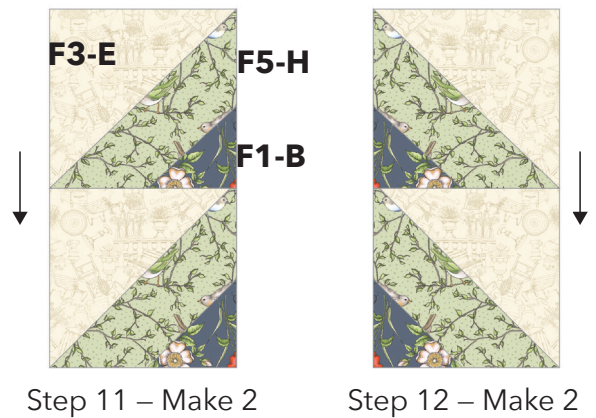
❑ 10 Repeat steps 1-6 using the remaining F3-E squares, the F5-H squares, and the F1-B squares to make (20) HST 2 units:

❑ 11. Sew (2) HST 2 units together. Make sure to orient the units as illustrated. Press. Make 2.

❑ 12. Sew (2) HST 2 units together in the opposite direction from step 11. Press. Make 2.

❑ 13. Sew (3) HST 2 units together into a row. Make sure to orient the units as illustrated. Press. Make 2.

❑ 14. Sew (3) HST 2 units together in the opposite direction from step 13. Press. Make 2.



Step 13 - Make 2



Step 14 - Make 2

## Quarter Circle Units

Gather (40) F3-D squares and F2-C squares

❑ 15 Cut the quarter circle pieces using the template on p.8. Mark the center points on the inner and outer circles.

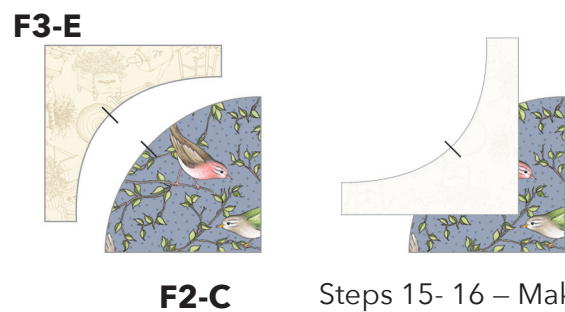
❑ 16. Place a F3-E outer circle over a F2-C inner circle, RST, matching the center marks. Pin.

❑ 17. Pin the outer curve to the inner curve. Make sure to match up the ends.

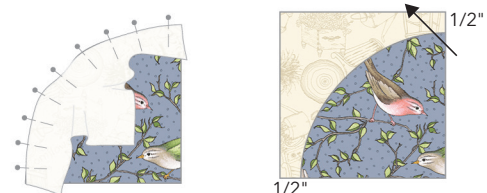
❑ 18. Sew along the curved and pinned edge with a scant 1/4" seam allowance keeping the outer circle fabric as flat as possible. Remove the pins as you sew.

❑ 19. Press toward E. Square up to 3-1/2" with 1/2" of the background fabric showing. Make 40.

❑ 20. Sew into petal pairs. Press. Make 20.



Steps 15- 16 - Make 2



Make 40

Step 19 - square to 3-1/2"

Petal Pairs



Step 20 - Make 20

## Flower Blocks

Gather (5) F1-A squares, (20) F1-B squares

❑ 21. Sew a petal pair to either side of a F1-A square. Press. Make 5.

❑ 22. Sew a F1-B square to opposite sides of the remaining 10 petal pairs. Press.

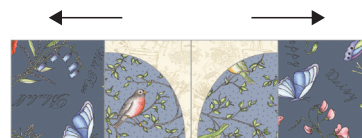
❑ 23. Sew a step 22 unit to the top and bottom of the step 21 unit. Press. Make 5.

❑ 24. Sew a Step 11 and 12 sections to the sides of four Flower Blocks. Sew two to the right side of two blocks and two to the left side of two blocks. Follow the illustrations below. Make 2 of each.

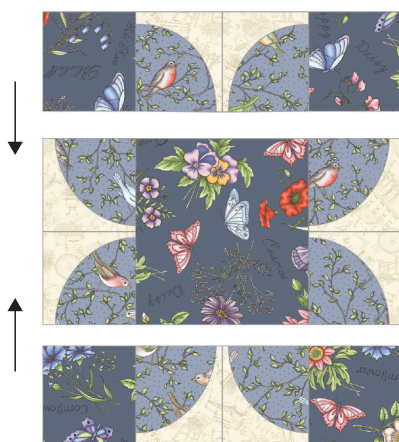
❑ 25. Sew the Step 13 and 14 sections to the top of the Step 24 blocks. Follow the illustrations below. Make 2 of each.



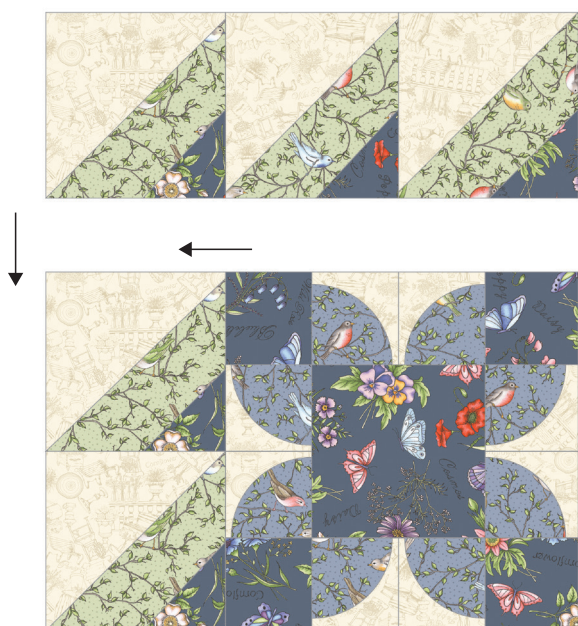
Step 21 – Make 5



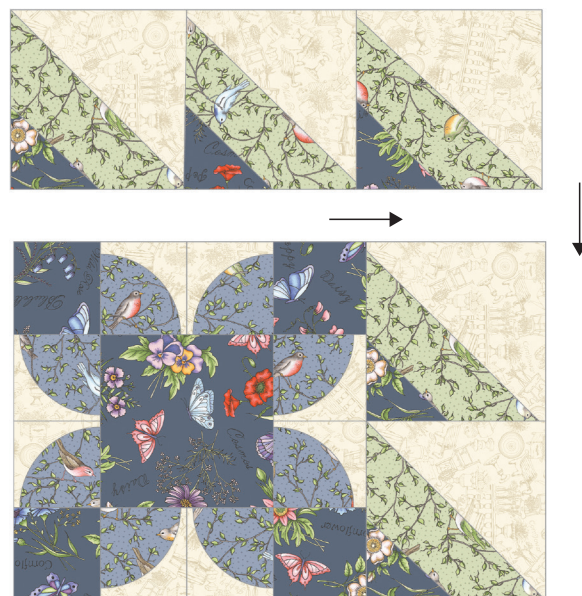
Step 22 – Make 10



Step 23 – Make 5  
12-1/2" x 12-1/2"



Step 24-25 – Make 2



Step 24-25 – Make 2



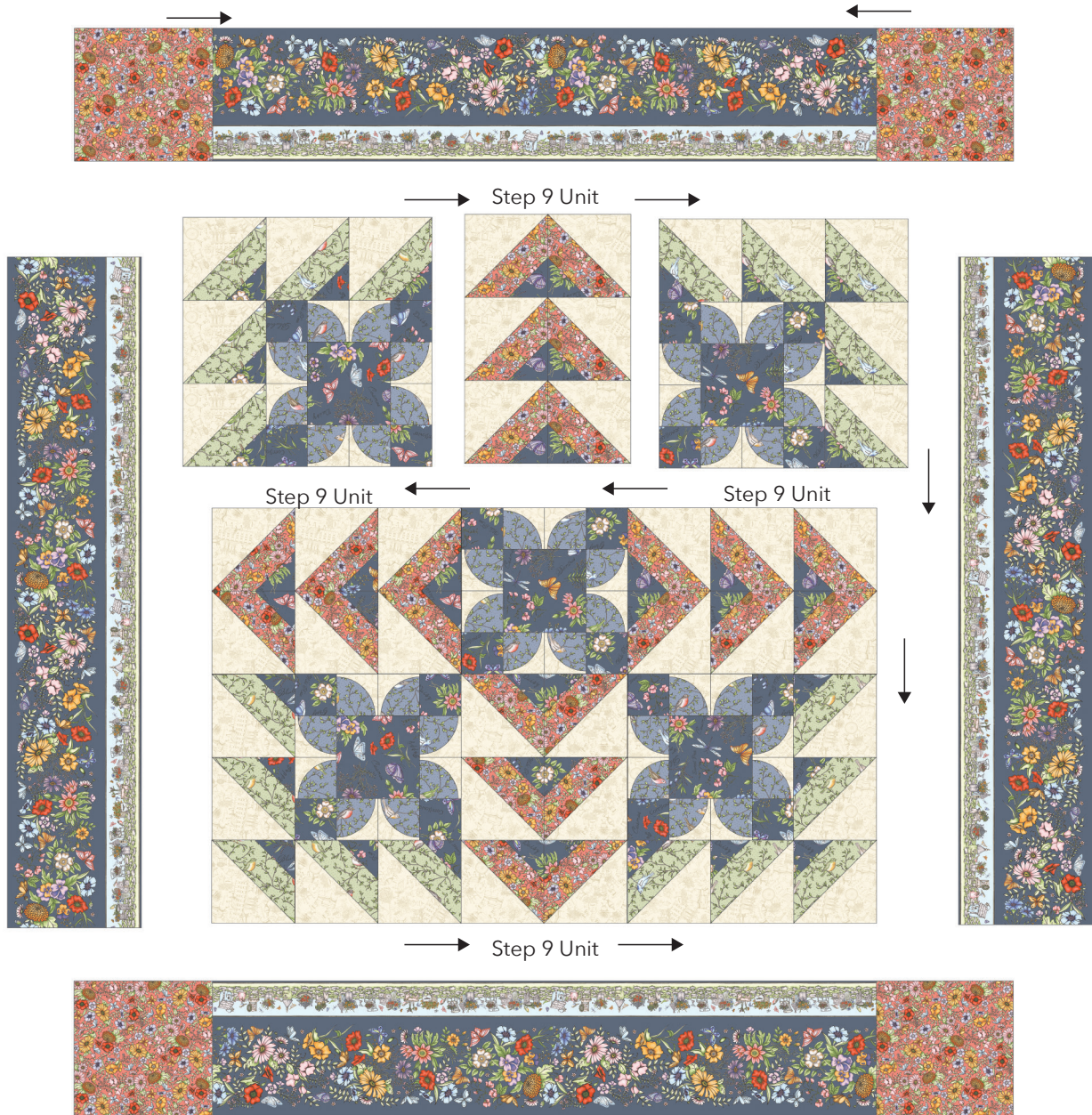
## Quilt Top and Finishing

Gather (4) F4-G squares, (4) F6 border rectangles

❑ 26. Lay the blocks into rows as illustrated below. Add the Step 9 units (p.4) as illustrated below. Sew the rows together. Press to nest. Sew Row to Row. Press in one direction.

❑ 27. Sew the border strips to the sides of the quilt top. Press toward borders.

❑ 28. Sew a F4-G square to opposite ends of the two remaining F6-Border strips. Press. Sew to the top and bottom of the quilt. Press.



❑ 29. Layer the backing (wrong side up), batting and quilt top (right side up). Baste layers to secure. Quilt as desired. Trim the excess backing and batting.

❑ 30. Sew the binding strips together into one continuous strip. Press in half length-wise. Sew the binding to the quilt top with a 1/4" seam allowance. Turn the binding to the back side of the quilt and stitch down by hand with matching thread.

## Garden Stroll Quarter Circle Template

Print this template at 100%. Measure the 1" test square before cutting. Cut on the solid lines. The dashed lines indicate the stitching lines. Sew with a scant 1/4" seam allowance.

This template is designed to create a quarter circle unit that will be squared up to 3-1/2". It will be slightly bigger than 3-1/2" after sewing. Square up the Outer Circle sides so they measure 1/2". Follow the instructions on p.5 of this pattern.

