

Porcelain

ANDOVER FABRICS



100
years



Ribbon of Blue Quilt designed by: **Janet Houts** • Quilt Size: **85" x 85"**
Skill Level: **Advanced Beginner** • andoverfabrics.com

andover



[makower uk](http://makower.uk)

Free Pattern Download Available

1384 Broadway New York, NY 10018
Tel. (800) 223-5678 • andoverfabrics.com

Ribbon of Blue Quilt

Introducing Andover Fabrics new collection: **PORCELAIN** by Andover Fabrics

Quilt designed by Janet Houts



Quilt finishes 85" x 85"

12 Block Y: 15" x 15"

13 Block Z: 15" x 15"

Light and dark blue prints combine to make this dynamic queen-size quilt. The diagonal placement of the lighter patches gives the quilt movement and energy. The construction is easier than it appears in the two different pieced blocks.

Cutting Directions

Note: Read assembly directions before cutting patches. All measurements are cut sizes and include 1/4" seam allowances. Borders are cut the exact lengths required plus 1/4" seam allowances. WOF designates the width of fabric from selvedge to selvedge (approximately 42" wide).

Cutting for ONE Block Y

Fabric A

Cut (4) squares 3 1/2"

Dk. Blue Prints

Cut (12) squares 3 1/2"

Cut (2) squares 3 7/8" OR 4" for HST
(Read Step 1 before cutting)

Lt. Blue Prints

Cut (2) squares 3 7/8" OR 4" for HST

Cutting for ONE Block Z

Dk. Blue Prints

Cut (5) squares 3 1/2"

Cut (10) squares 3 7/8" OR 4" for HST

Lt. Blue Prints

Cut (8) squares 3 1/2"

Cut (2) squares 3 7/8" OR 4" for HST

Fabric Requirements

		Yardage	Fabric
Fabric A	blocks	1/2 yard	9377 B
Fabric B	border	1 1/4 yards	9372 B
Fabric C	border	1/2 yard	9378 B
6 Dk. Blue	blocks	3/4 yard each	
	9371 B	9373 B	*9374 B 9375 B
	9376 B	9378 BL	
7 Lt. Blue	blocks	3/8 yard each	
	9371 BL	9372 BL	9373 BL **9374 BL
	9375 BL	9376 BL	9377 BL
*Binding		3/4 yard	9374 B
**Backing		7 3/4 yards	9374 BL

Cutting for entire quilt

Fabric A

Cut (48) squares 3 1/2"

Fabric B

Cut (9) strips 4 1/2" x WOF, pieced to make the following:

(2) top/bottom borders 4 1/2" x 85 1/2"

(2) side borders 4 1/2" x 77 1/2"

Fabric C

Cut (8) strips 1 1/2" x WOF, pieced to make the following:

(2) t/b borders 1 1/2" x 77 1/2"

(2) side borders 1 1/2" x 75 1/2"

6 Dk. Blue

From each:
Cut (25-26) squares 3 7/8" OR 4" for HST (154 total) Read Step 1 before cutting

Cut (34-35) squares 3 1/2" (209 total)

7 Lt. Blue

From each:
Cut (7-8) squares 3 7/8" OR 4" for HST (50 total) Read Step 1 before cutting

Cut (14-15) squares 3 1/2" (104 total)

Binding

Cut (9) strips 2 1/2" x WOF for binding

Backing

Cut (2) panels 32" x 93", pieced to fit quilt top with overlap on all sides

Making the Quilt

1. The blocks use half-square triangles (HST) that finish 3" square. Some are made with 2 dark blue squares, and others are made with 1 dark and 1 light blue square. Use your favorite method to make HST, or follow these directions. If you wish to make the HST slightly oversized to be trimmed, cut 4" squares instead of 3⁷/₈". Draw a diagonal line on the wrong side of each light blue 3⁷/₈" (4") square (Diagram 1). Place a marked square on a dark blue square, right sides together. Sew 1/4" seam on each side of the marked line; cut apart on the marked line. Press open to make pieced HST. Trim each HST to 3¹/₂" if needed. Make 100 total light HST.

3⁷/₈" (4")

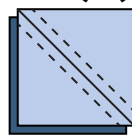
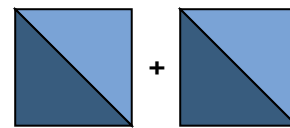


Diagram 1



Lt. HST Make 100

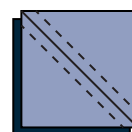
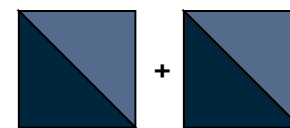
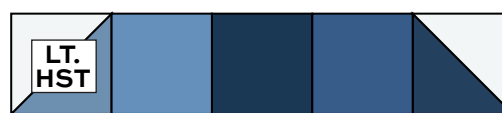


Diagram 2

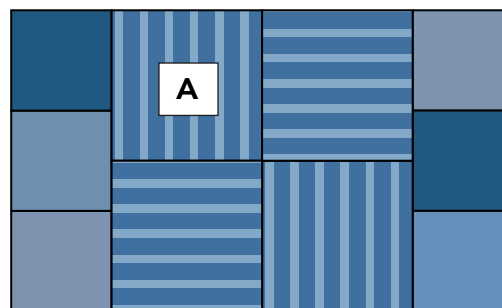


Dk. HST Make 104

2. Likewise, mark a diagonal line on the wrong side of 52 dark blue 3⁷/₈" (4") squares. Place a marked square on a different dark blue square. Follow the directions above to make 104 dark HST (Diagram 2).



3. Referring to the Block Y diagram, join 4 Fabric A squares, rotating the striped print as shown, to make the center square. Join dark 3¹/₂" squares and sew to the sides of the center square. Join dark squares and light HST to make the top and bottom rows, turning HST as shown. Sew to the block. Make 12 Block Y.



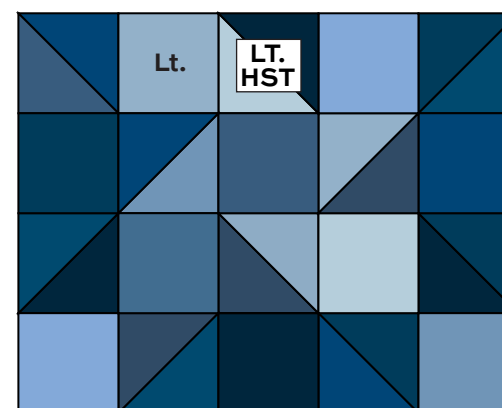
Block Y – Make 12

4. Referring to the Block Z diagram, arrange 8 dark HST, 4 light HST, dark 3¹/₂" squares, and light 3¹/₂" squares in 5 rows of 5 patches each. Pay careful attention to the rotation of the HST. Once you are satisfied with the arrangement, join the patches into rows, and then join the rows. Make 13 Block Z.



5. Referring to the Quilt Diagram, arrange the Y and Z blocks alternately in 5 rows of 5 blocks each. Do not place a fabric next to itself. Once you are satisfied with the arrangement, join the blocks into rows, and then join the rows.

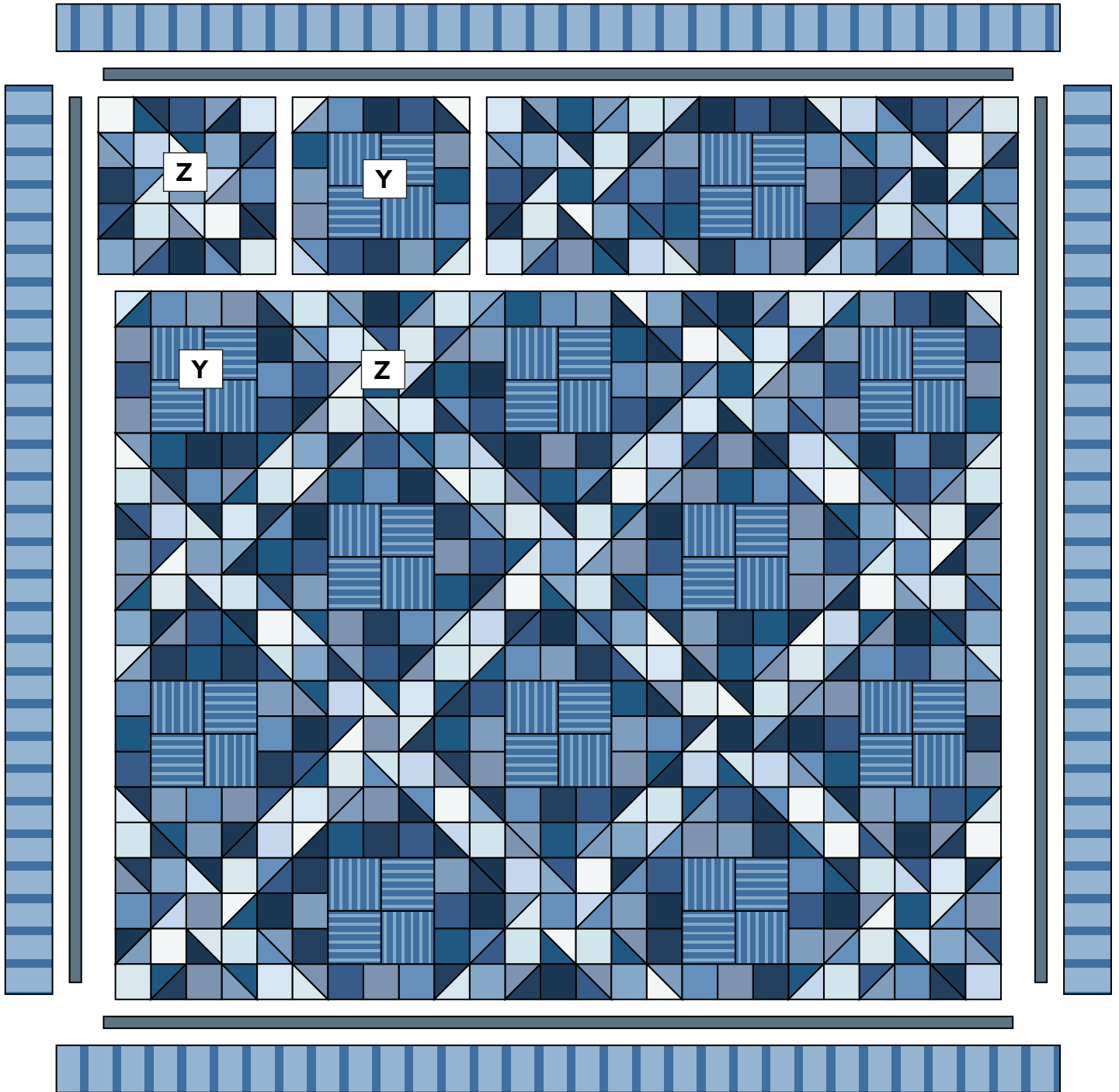
6. Sew short Fabric C borders to the sides of the quilt. Sew longer Fabric C borders to the top and bottom. Repeat with Fabric B borders.



Block Z – Make 13

Finishing the Quilt

7. Layer the quilt with batting and backing and baste. Quilt in the ditch around borders and block patches. Quilt the outer border as you wish. Bind to finish the quilt.



Quilt Diagram

Porcelain

ANDOVER FABRICS



100
years



9371 B



9371 BL



9372 B



9372 BL



9373 B



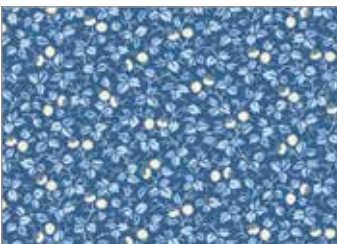
9373 BL



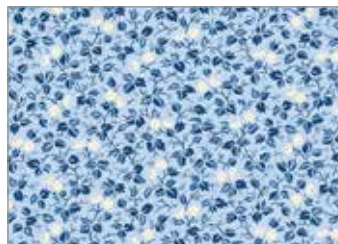
9374 B



9374 BL



9375 B



9375 BL



9376 B



9376 BL



9377 B



9377 BL



9378 B



9378 BL

All fabrics are used in quilt pattern. Fabrics shown are 50% of actual size.

andover : makower uk

Free Pattern Download Available

1384 Broadway New York, NY 10018
Tel. (800) 223-5678 • andoverfabrics.com

5/15/21