

MAYWOOD  STUDIO

# Bramble Patch Quilt



## **Bramble Patch Quilt by Maywood Studio**

featuring Bramble Patch by Hannah Dale of Wendale Designs

53" x 63½"

#madewithmaywood  
maywoodstudio.com



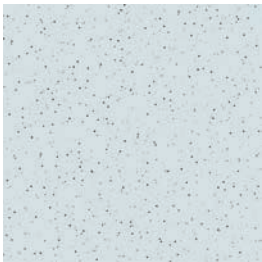
# MAYWOOD STUDIO



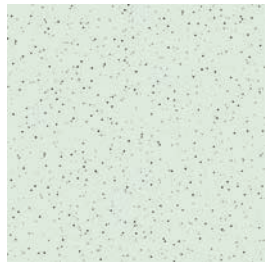
Fabric 1 - Panel 1  
D10100-BS



Fabric 2- Panel 2  
D10100-SP



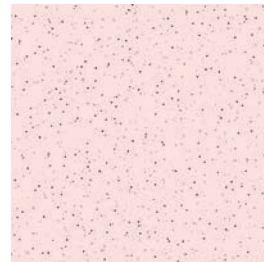
Fabric 3  
D10107-B



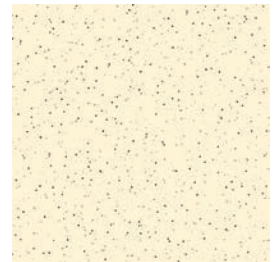
Fabric 4  
D10107-G



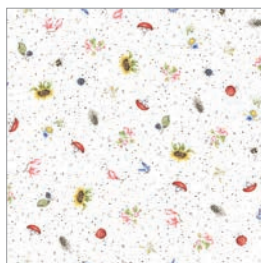
Fabric 5  
D10107-K



Fabric 6  
D10107-P



Fabric 7  
D10107-S



Fabric 8  
D10106-W



Fabric 9  
D10101-Z

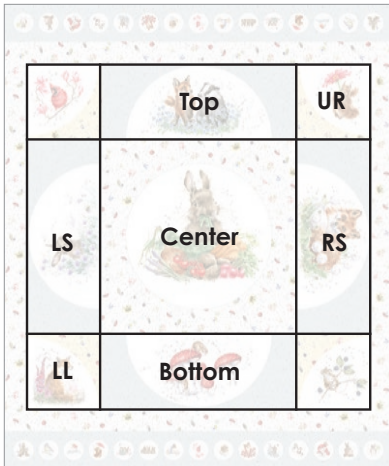
\*NOTE: there are 30 different animal circles and they may vary per cut of fabric. You only need 14 for this quilt.



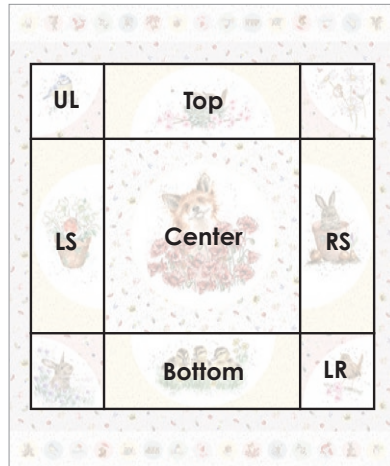
## Fabric Requirements

Fabric 1	D10100-BS	1 panel
Fabric 2	D10100-SP	1 panel
Fabric 3	D10107-B	1/4
Fabric 4	D10107-G	5/8 yard
Fabric 5	D10107-K *includes binding	5/8 yard
Fabric 6	D10107-P	1/8 yard
Fabric 7	D10107-S	1/4 yard
Fabric 8	D10106-W	1/4 yard
Fabric 9	D10101-Z	1 panel
Backing	your choice	4 yards

### Panel Cutting Guide



Fabric 1-Panel 1



Fabric 2-Panel 2

### Animal Circles (Suggested Cutting Layout)

Your fabric may be a slightly different cut due to the nature of the running yardage. We recommend that you mark your fabric before cutting. Your layout might be different.



## Cutting

Finished Size 53" x 63½"

Fabric 1 (Bunny Panel)

Fabric 2 (Fox Panel)

\*See the panel cutting guide on this page.

Center: 18" x 18"

UL, UR, LL, LR: 7" x 7"

Top, Bottom, LS, RS: 7" x 18"

Fabric 3 (Blue Speckle)

Cut (2) 2" x WOF strips. Subcut into

A: (4) 2" x 6-1/2" rectangles

B: (4) 2" x 9-1/4" rectangles

Fabric 4 (Green Speckle)

Cut (9) 2" x WOF strips. Subcut into:

C: from 4 strips cut (8) 2" x 18" rectangles

D: from 2 strips cut (2) 2" x 26" strips.

Sashing: from 3 strips cut and piece

(2) 2" x 53" sashing strips.

Fabric 5 (Grey Speckle)

Cut (2) 2" x WOF strips. Subcut into

E: (4) 2" x 6-1/2" rectangles

F: (4) 2" x 9-1/4" rectangles

Cut (6) 2-1/2" x WOF strips for binding

Fabric 6 (Pink Speckle)

Cut (1) 2" x WOF strip. Subcut into

G: (2) 2" x 7" rectangles

H: (2) 2" x 8-1/2" rectangles

Fabric 7 (Yellow Speckle)

Cut (1) 2" x WOF strip. Subcut into:

I: (2) 2" x 7" rectangles

J: (2) 2" x 8-1/2" rectangles

Cut (2) 2" x WOF strips. Subcut into

K: (4) 2" x 6-1/2" rectangles

L: (4) 2" x 9-1/4" rectangles

Fabric 8 (White Floral)

Cut (4) 2" x WOF strips. Subcut into:

M: (4) 2" x 15" rectangles.

N: (4) 2" x 18" rectangles.

Fabric 9 (Animal Circles)

O: Fussy Cut (2) 15" x 15" squares.

Each will have 4 circles, centered.

P: Fussy Cut (6) 6-1/4" x 6-1/2" rectangles, centering the circle in each rectangle.

WOF - Width of Fabric  
LOF - Length of Fabric  
RST - Right Sides Together  
HST - Half Square Triangle

## Bramble Patch Quilt Instructions

Please read all instructions before you begin. Seam allowance is 1/4" unless otherwise stated. Fabric will be abbreviated to 'F', for example, F1 refers to Fabric 1. Follow the pressing arrows when indicated.

**Note:** This quilt is built in four sections: Upper Left, Upper Right, Lower Right, and Lower Left. They are joined with sashing.

### Upper Left Section

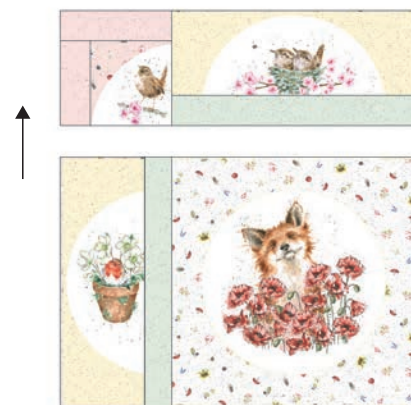
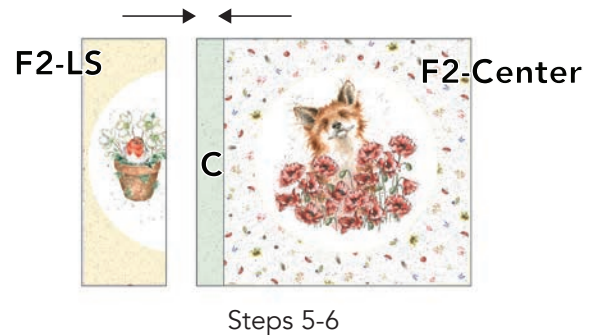
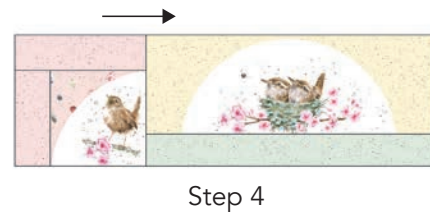
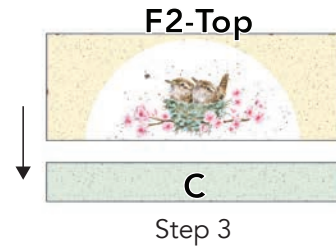
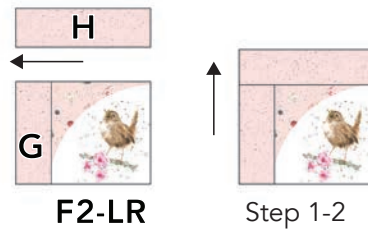
Gather:

Fabric 2 Panel LR and Top, and Center sections

(1) F6-G and (1) F6-H rectangle

(2) F4-C rectangles.

1. Sew a F6-G rectangle to the left side of the F2-LR section. Press.
2. Sew a F6-H rectangle to the top of the Step 1 unit. Press.
3. Sew a F4-C rectangle to the bottom of the F2-Top section. Press.
4. Sew the Step 1-2 and Step 3 units together. Press.
5. Sew a F4-C rectangle to the F2-Center section. Press.
6. Sew a F2-LS section to the Step 5 unit. Press.
7. Sew the Step 4 section to the step 5-6 section. Press. Make 1. Finishes at 26" square.



Upper Left Section  
26" x 26"  
Make 1

## Upper Right Section

Gather:

Fabric 1 Panel RS, LL, and Top sections

(1) F7-I and (1) F7-J rectangle

(2) F4-C rectangles

(1) F9-O square

(2) F8-M and F8-N rectangles.

1. Sew a F7-I rectangle to the top of the F1-LL section. Press.

2. Sew a F7-J rectangle to the right side of the Step 1 unit. Press.

3. Sew a F4-C rectangle to the top of the F1-Top section. Press..

4. Sew the Step 1-2 and Step 3 units together. Press.

5. Sew a F8-M rectangle to either side of the Fabric 9-O square. Press.

6. Sew a F8-N rectangle to the top and bottom of the Step 5 unit. Press.  
Finishes 18" x 18.

7. Sew a F1-RS section to the step 6 unit. Press.

8. Sew a F4-C rectangle to the Step 7 unit. Press.

9. Sew the Step 4 section to the step 7-8 section. Press. Make 1. 26" x 26".



F1-LL

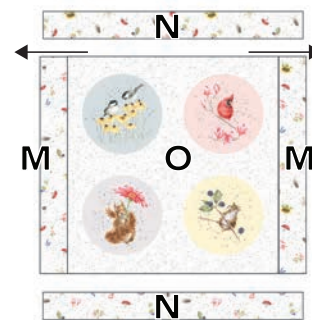
Step 1-2



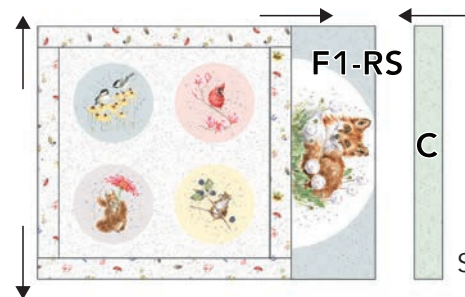
Step 3



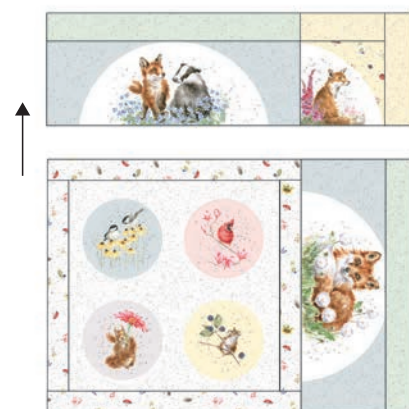
Step 4



Steps 5-6



Steps 7-8



Upper Right Section

26" x 26"

Make 1

## Lower Right Section

Gather:

Fabric 1 Panel Center

Fabric 2 Panel UL, RS, and Bottom sections

(1) F6-G and (1) F6-H rectangle

(2) F4-C rectangles.

1. Sew a F6-G rectangle to the right side of the F2-UL section. Press.

2. Sew a F6-H rectangle to the bottom of the Step 1 unit. Press.

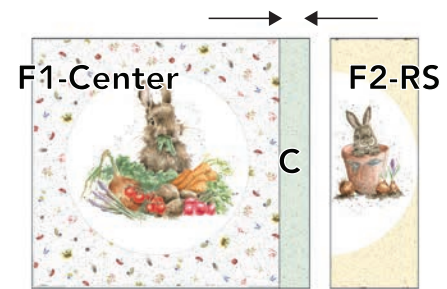
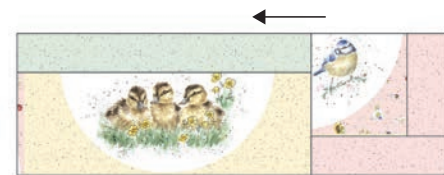
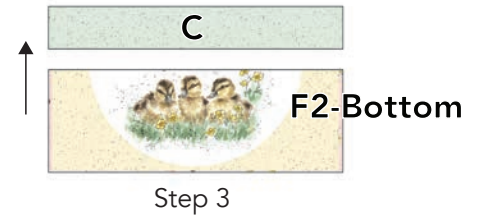
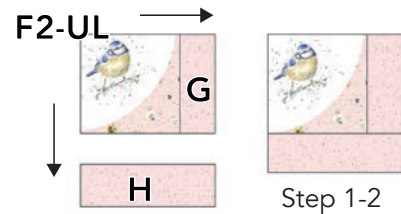
3. Sew a F4-C rectangle to the top of the F2-Bottom section. Press.

4. Sew the Step 1-2 and Step 3 units together. Press.

5. Sew a F4-C rectangle to the F1-Center section. Press.

6. Sew a F2-RS section to the Step 5 unit. Press.

7. Sew the Step 4 section to the step 5-6 section. Press. Make 1. Finishes at 26" square.



Lower Right Section  
26" x 26"  
Make 1



## Lower Left Section

Gather:

Fabric 1 Panel UR, LS, and Bottom sections

(1) F7-I and (1) F7-J rectangle

(2) F4-C rectangles

(1) F9-O square

(2) F8-M and F8-N rectangles.

1. Sew a F7-I rectangle to the bottom of the F1-UR section. Press toward I.

2. Sew a F7-J rectangle to the left side of the Step 1 unit. Press.

3. Sew a F4-C rectangle to the bottom of the F1-Bottom section. Press.

4. Sew the Step 1-2 and Step 3 units together. Press.

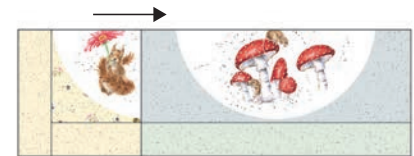
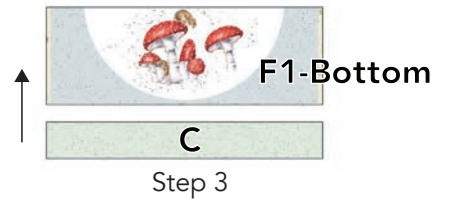
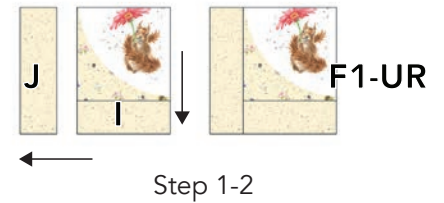
5. Sew a F8-M rectangle to either side of the Fabric 9-O square. Press.

6. Sew a F8-N rectangle to the top and bottom of the Step 5 unit. Press.  
Finishes at 18" x 18".

7. Sew a F1-LS section to the step 6 unit. Press.

8. Sew a F4-C rectangle to the Step 7 unit. Press.

9. Sew the Step 4 section to the step 7-8 section. Press. Make 1. 26" x 26".



Step 4



Steps 5-6



Steps 7-8



Lower Left Section  
26" x 26"  
Make 1

## Center Blocks and Top Assembly

Gather:

- (6) F9-P rectangles
- (4) F3-A and B rectangles
- (4) F5-E and F rectangles
- (4) F7-K and L rectangles
- (2) D strips
- (2) Sashing strips

1. Sew a F3-A rectangle to the sides of a F9-P rectangle. Press.

2. Sew a F3-B rectangle to the top and bottom of the Step 1 unit. Press.

3. Repeat to make two blocks with F5-E and F rectangles and two blocks with F7-K and L rectangles for a total of 6 center blocks.

4. Sew the blocks into a row - follow the 'center section layout to the right. Press open.

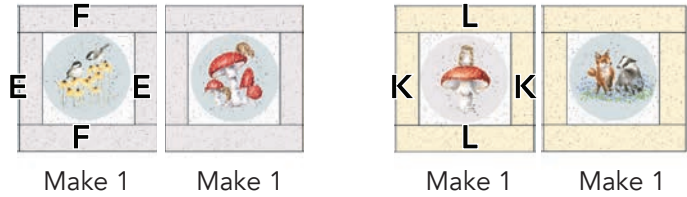
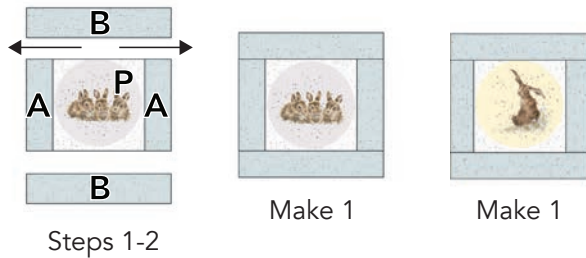
5. Upper sections: Sew a F4-D rectangle to the right side of the upper left section. Then sew to left side of the Upper Right section. Press.

6. Lower sections: Sew a F4-D rectangle to the right side of the lower left section. Then sew to left side of the lower right section. Press.

7. Join the Upper and Lower Sections to the Center sections with the F4 sashing strips. Press toward sashing.

8. Layer the backing (wrong side up), batting and quilt top (right side up). Baste layers to secure. Quilt as desired. Trim the excess backing and batting.

9. Sew the binding strips together into one continuous strip. Press in half length-wise. Sew the binding to the quilt top with a 3/8" seam allowance, mitering the corners. Turn the binding to the back side of the quilt and stitch down by hand with matching thread.



Step 3

