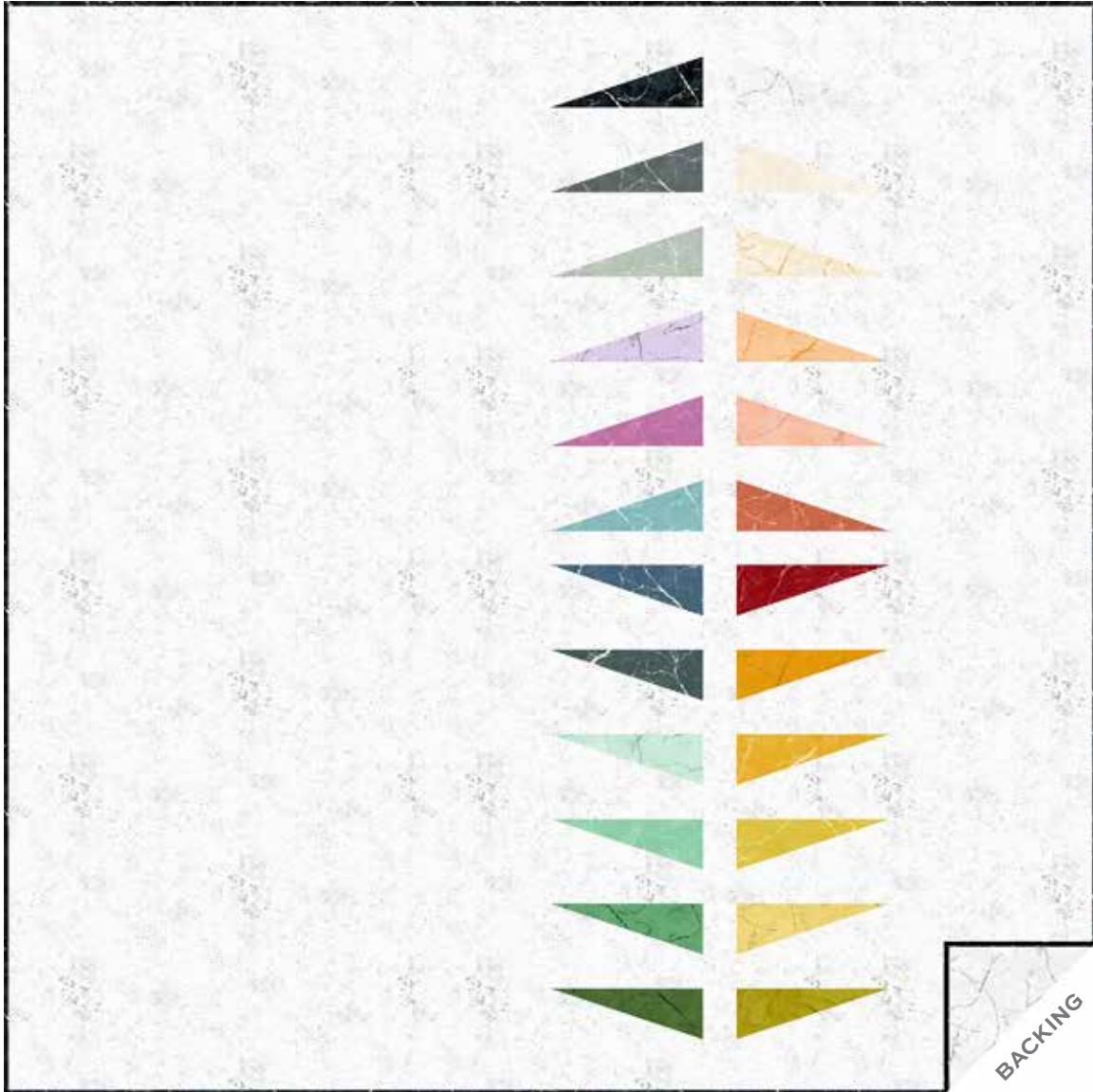


Pietra

GIUCY GIUCE



100
years



Quarry Quilt designed by: **GIUCY GIUCE** • Quilt Size: **64" x 64"**

Skill Level: **Intermediate** • andoverfabrics.com

andover • makower.uk

Free Pattern Download Available

1384 Broadway New York, NY 10018
Tel. (800) 223-5678 • andoverfabrics.com

3/1/21

Quarry Quilt

Introducing Andover Fabrics new collection: PIETRA by Giucy Giuce

Quilt designed by Giucy Giuce



Quilt finishes 64" x 64"

12 Block Y: 3" x 9"

12 Block Z: 3" x 9"

As sleek and modern as an abstract painting, this wall quilt is sure to please anyone with a minimalist sensibility. The expansive neutral panels are the perfect space to display machine-quilting motifs.

Cutting Directions

Note: Read assembly directions before cutting patches. All measurements are cut sizes and include ¼" seam allowances. A fat ¼ is a 9" x 20"-22" cut of fabric. WOF designates the width of fabric from selvedge to selvedge (approximately 42" wide).

Fabric A All patches are cut lengthwise.

Cut (2) borders 3½" x 64½"

Cut (1) panel 32½" x 58½"

Cut (1) panel 12½" x 58½"

Cut (1) sash 2½" x 58½"

Cut (22) sashes 2½" x 9½"

Cut (12) Template 1

Cut (12) Template 2

12 "Y" Prints From each:

Cut (1) Template 1

12 "Z" Prints From each:

Cut (1) Template 2

Binding

Cut (7) strips 2½" x WOF for binding

Backing

Cut (2) panels 35" x 70", pieced to fit quilt top with overlap on all sides

Fabric Requirements

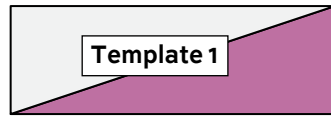
	Yardage	Fabric	
Fabric A	setting	3½ yards	9248 L2
12 "Y" Prints	blocks	fat ¼ yard each	
9881 C1	9881 C2	9881 E	*9881 K 9881 T
9881 P	9881 R	9881 Y	9881 Y1 9881 Y2
9881 YO	9881 V		
12 "Z" Prints	blocks	fat ¼ yard each	
9881 B	9881 C	9881 G	9881 G1 **9881 LC
9881 LE	9881 LG	9881 LR	9881 LT 9881 LY
9881 O	9881 L		
Binding		5/8 yard	*9881 K
Backing		4 yards	**9881 LC

Making the Quilt

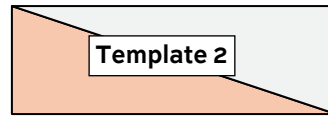
1. Referring to the Block Y diagram, join a Fabric A Template 1 to each Template 1 "Y" patch. Make 12 Block Y. Likewise, join Fabric A patches together with Template 2 "Z" patches to make 12 Block Z.
2. Referring to the Quilt Diagram, position the 24 blocks in 2 vertical columns, arranging the fabrics as shown or as you wish. Note the rotation of the blocks in the bottom half of each column. Looking through a camera or the wrong end of binoculars may help you find mistakes. Once you are satisfied with the arrangement, join the blocks to make 2 columns.
3. Sew the narrow Fabric A sash between the 2 pieced columns. Stitch the panels to the appropriate side. Sew the borders to the top and bottom.

Finishing the Quilt

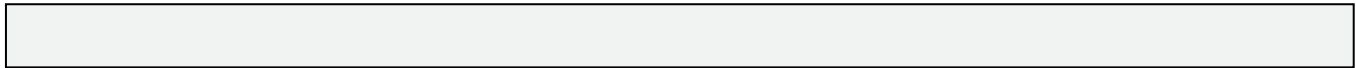
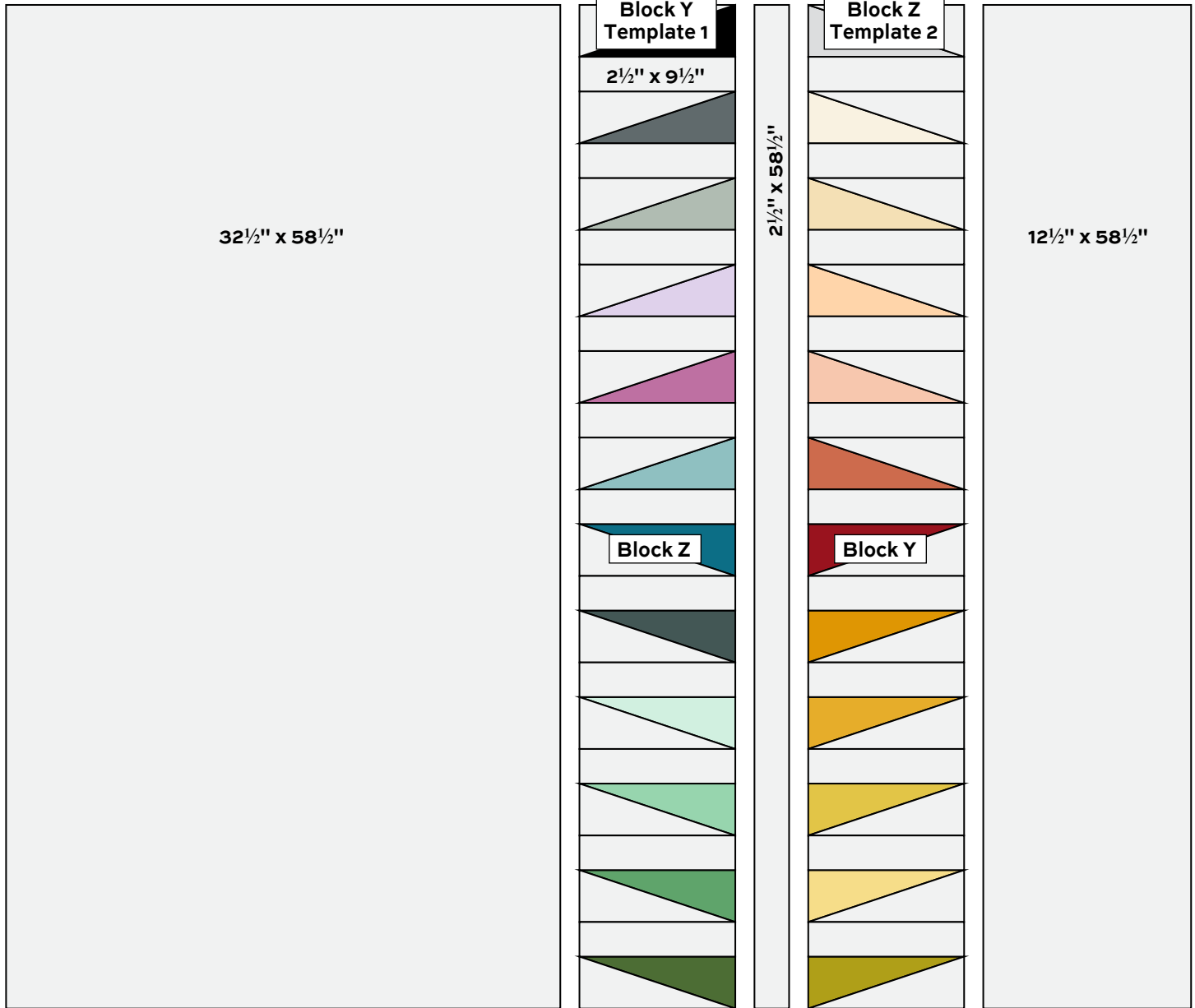
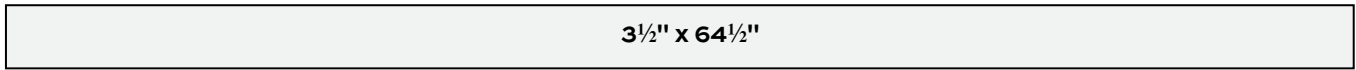
4. Layer the quilt with batting and backing and baste. Quilt in the ditch around borders and block patches. Quilt Fabric A panels and borders as desired, or quilt an overall pattern across the quilt. Bind to finish the quilt.



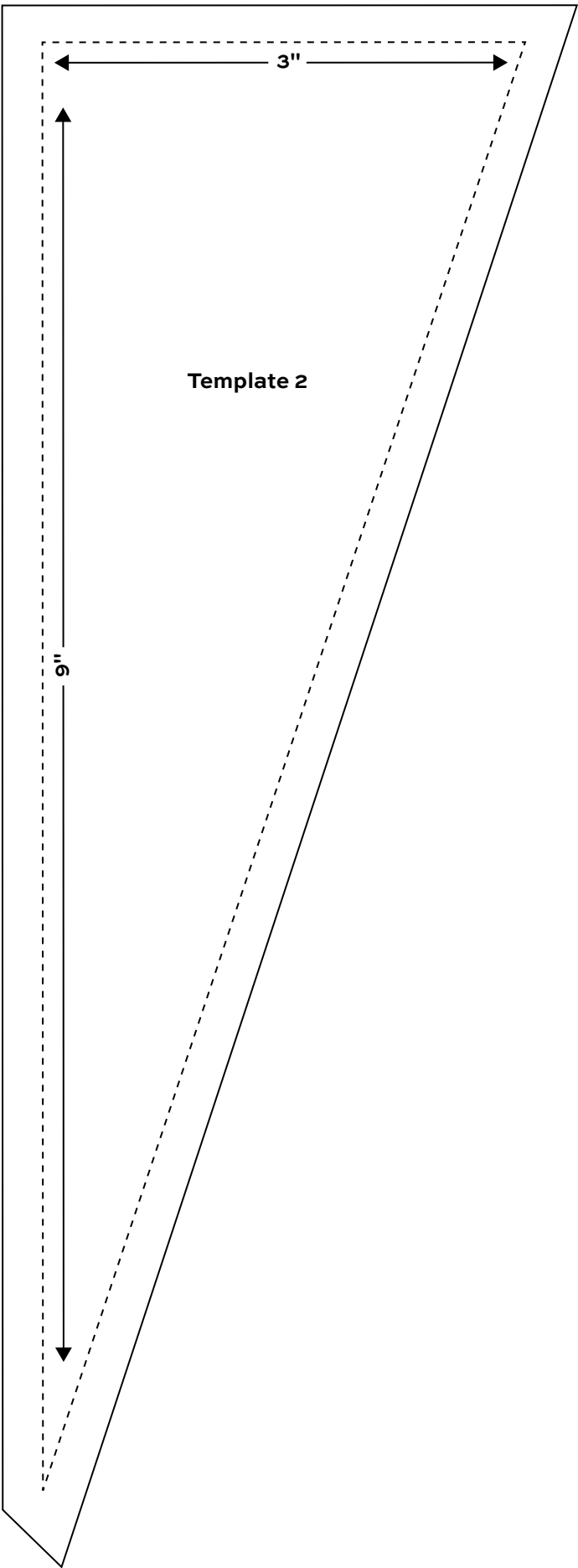
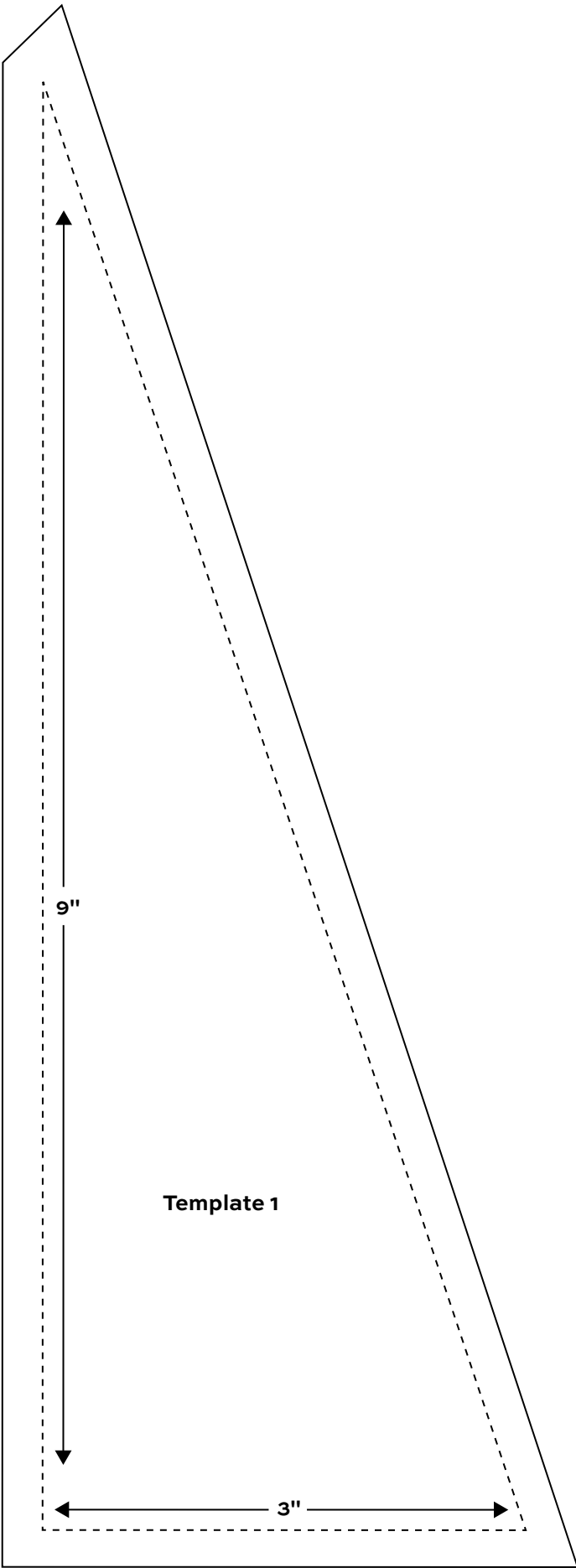
Block Y – Make 12



Block Z – Make 12



Quilt Diagram



Pietra

GIUCY GIUCE

100
years



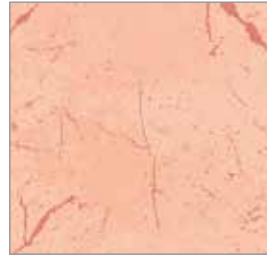
9881 L



9881 LY



9881 O



9881 LE



9881 LR



9881 R



9881 YO



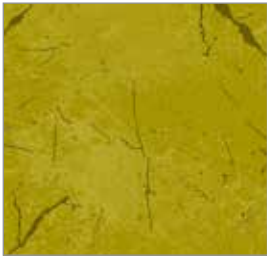
9881 Y



9881 Y2



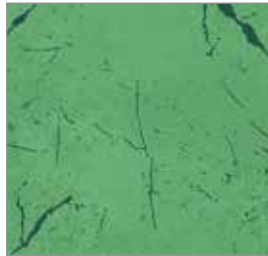
9881 Y1



9881 V



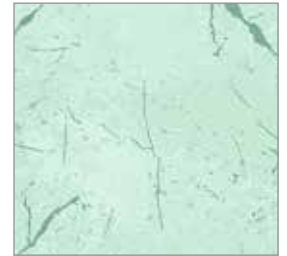
9881 G1



9881 G



9881 LG



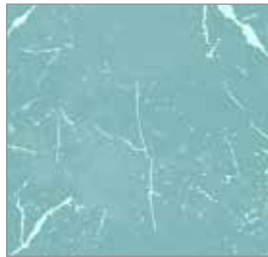
9881 LT



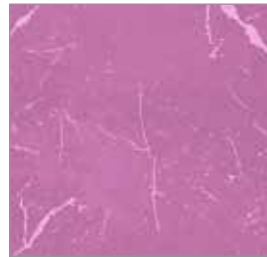
9881 C



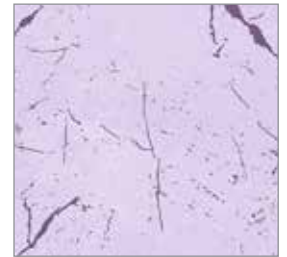
9881 B



9881 T



9881 E



9881 P



9881 LC



9881 C2



9881 C1



9881 K

Blend with additional fabric from Spectrastatic by Giucy Giuce



9248 L2

All fabrics are used in quilt pattern. Fabrics shown are 50% of actual size.

andover



makower.uk

Free Pattern Download Available

1384 Broadway New York, NY 10018
Tel. (800) 223-5678 • andoverfabrics.com