

Next Stop is Home

A Free Project Sheet
NOT FOR RESALE

By Leanne Anderson & Kaytlyn Kuebler

Quilt Design by Leanne Anderson & Kaytlyn Kuebler



Quilt 2

Skill Level: Intermediate



Henry Glass & Co., Inc.



facebook

Finished Quilt Size: 30" x 57"
49 West 37th Street, New York, NY 10018
tel: 212-686-5194 fax: 212-532-3525
Toll Free: 800-294-9495
www.henryglassfabrics.net
Please check our website for pattern updates before starting this project.

NEXT STOP IS HOME Quilt 2

Fabrics in the Collection



Plaid
Brown – 9816-38



Travel Tonal
Gold – 9817-35



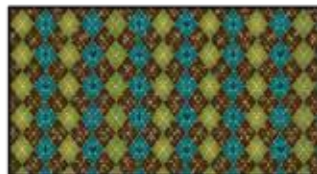
Travel Tonal
Green – 9817-66



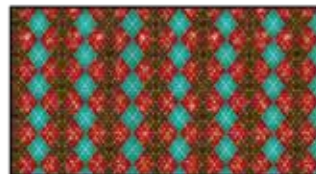
Travel Tonal
Teal – 9817-77



Pawprint
Cream – 9818-44



Argyle
Green – 9819-66



Argyle
Red – 9819-88



Tag Word
Tan – 9820-44



Tag Word
Red – 9820-88



Tossed Allover Characters
Light Blue – 9821-11



Tossed Allover Characters
Cream – 9821-44



Border Stripe
Light Blue – 9822-11



Continuous Blocks
Red – 9823-88



Growing Chart
Light Blue – 9824P-11



Banner Panel
Red – 9825P-88

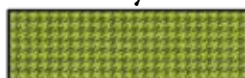
Select Fabrics from Starry & Houndstooth Basics



Starry Basics
Orange
8294-35



Houndstooth Basics
Brown
8624-38



Houndstooth Basics
Lime Green
8624-67



Houndstooth Basics
New Teal
8624-78



Houndstooth Basics
Red
8624-88

NEXT STOP IS HOME

Quilt 2

Page 1

Materials

1 panel	Growing Chart - Light Blue (A)	9824P-11
$\frac{7}{8}$ yard	Starry Basics - Orange (B)	8294-35*
$\frac{3}{8}$ yard	Travel Tonal - Green (C)	9817-66
$\frac{1}{3}$ yard	Houndstooth Basics - New Teal (D)	8624-78
$\frac{1}{4}$ yard	Argyle - Red (E)	9819-88
$\frac{1}{4}$ yard	Travel Tonal - Teal (F)	9817-77
$\frac{1}{4}$ yard	Plaid - Brown (G)	9816-38
$\frac{1}{4}$ yard	Tag Word - Red (H)	9820-88
$\frac{1}{4}$ yard	Argyle - Green (I)	9819-66
$\frac{1}{4}$ yard	Pawprint - Cream (J)	9818-44
$\frac{3}{8}$ yard	Tossed Allover Characters - Light Blue (K)	9821-11
2 yards	Tag Word - Tan (Backing)	9820-44

*Includes binding

Cutting Instructions - Both Versions

Please note: All strips are cut across the width of fabric (WOF) from selvage to selvage edge unless otherwise noted.

From the Growing Chart - Light Blue (A):

- Fussy cut (1) 23 $\frac{1}{2}$ " x 42 $\frac{1}{2}$ " rectangle, centered on the panel.

From the Starry Basics - Orange (B), cut:

- (2) 2" x 42 $\frac{1}{2}$ " WOF strips, piece as needed.
- (2) 2" x 26 $\frac{1}{2}$ " WOF strips.
- (5) 2 $\frac{1}{2}$ " x WOF strips for the binding.
- (2) Template 2 triangles.

From the Travel Tonal - Green (C), cut:

- (3) 2" x WOF strips. Sew the strips together end to end with diagonal seams and cut (2) 2" x 44 $\frac{1}{2}$ " strips.
- (2) 2" x 28 $\frac{1}{2}$ " WOF strips.

From the Houndstooth Basics - New Teal (D), cut:

- (3) 1 $\frac{1}{2}$ " x WOF strips. Sew the strips together end to end with diagonal seams and cut (2) 1 $\frac{1}{2}$ " x 55 $\frac{1}{2}$ " strips.
- (2) 1 $\frac{1}{2}$ " x 30 $\frac{1}{2}$ " WOF strips.

From the Argyle - Red (E), cut:

- (2) Template 2 triangles.

From the Travel Tonal - Teal (F), cut:

- (2) Template 2 triangles.

From the Plaid - Brown (G), cut:

- (2) Template 2 triangles.

From the Tag Word - Red (H), cut:

- (2) Template 2 triangles.

From the Argyle - Green (I), cut:

- (2) Template 2 triangles.

From the Pawprint - Cream (J), cut:

- (2) Template 2 triangles.

From the Tossed Allover Characters - Light Blue (K), cut:

- (2) Template 1 triangles.
- (12) Template 2 triangles.
- (2) Template 3 triangles.

From the Tag Word - Tan (Backing), cut:

- (1) 65" x 38" WOF strip.

Block Assembly

Note: The arrows in figures represent the fabric print direction. Pay attention to the fabric and unit orientations when assembling the various components. Use a $\frac{1}{4}$ " seam allowance with right sides together (RST) unless otherwise noted.

1. Sew (1) 2" x 42 $\frac{1}{2}$ " Fabric B strip to each side of the 23 $\frac{1}{2}$ " x 42 $\frac{1}{2}$ " Fabric A panel. Sew (1) 2" x 26 $\frac{1}{2}$ " Fabric B strip to the top and to the bottom of the Fabric A panel to make the Center Block (Fig. 1). **Trim the block to measure 25 $\frac{1}{2}$ " x 44 $\frac{1}{2}$ ".**

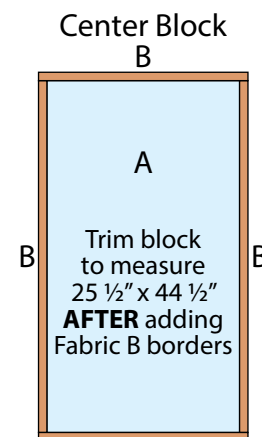


Fig. 1 B

2. Follow Figure 2 and sew together (1) Fabric K Template 3 triangle, (13) assorted Template 2 triangles and (1) Fabric K Template 1 triangle, in that order from left to right, to make the Top Border.

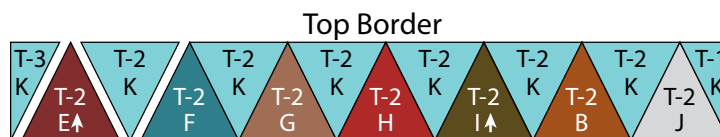


Fig. 2

3. Repeat Step 2 and refer to Figure 3 for fabric identification, placement and orientation to make the Bottom Border.

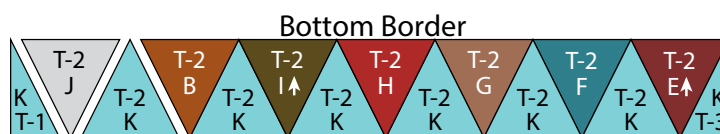


Fig. 3

NEXT STOP IS HOME

Quilt 2

Page 2

Quilt Top Assembly

(Follow the Quilt Layout while assembling the quilt top.)

4. Sew (1) 2" x 44 ½" Fabric C strip to each side of the Center Block. Sew (1) 2" x 28 ½" Fabric C strip to the top and to the bottom of the Center Block.

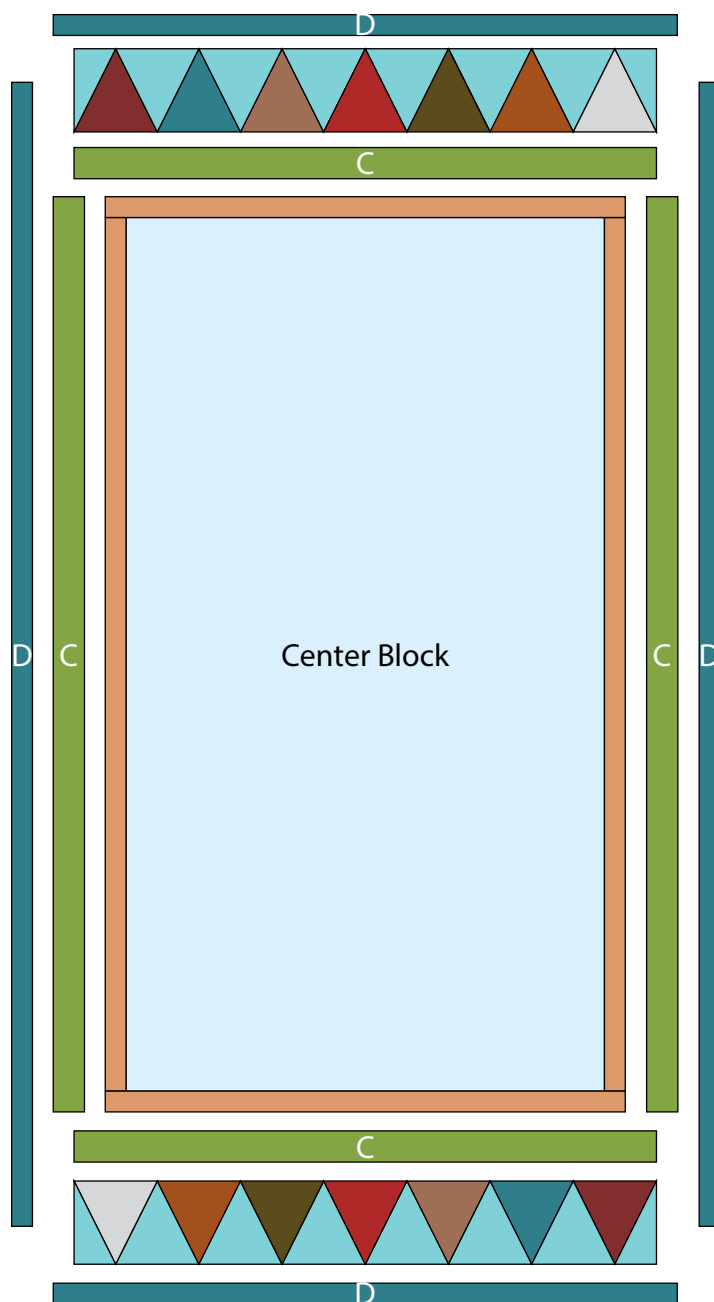
5. Sew the Top Border and Bottom Border to the top and to the bottom of the Center Block.

6. Sew (1) 1 ½" x 55 ½" Fabric D strip to each side of the Center Block. Sew (1) 1 ½" x 30 ½" Fabric D strip to the top and to the bottom of the Center Block to make the quilt top.

7. Layer and quilt as desired.

8. Sew the (5) 2 ½" x WOF Fabric B strips together, end to end with 45-degree seams, to make the binding. Fold this long strip in half lengthwise with wrong sides together and press.

9. Bind as desired.



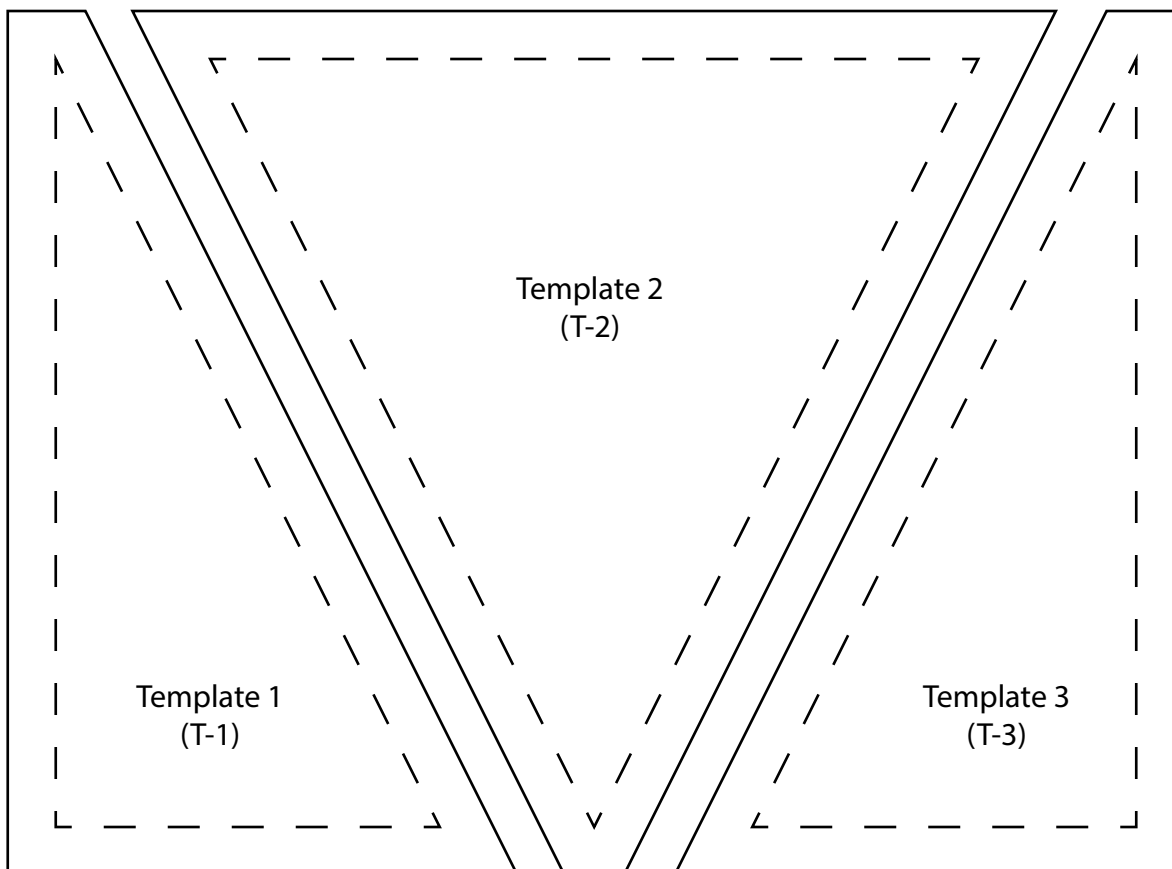
Quilt Layout

NEXT STOP IS HOME

Quilt 2

Page 3

100% Templates



1" square
for scale

**NOTE: All templates
should be cut from a
single layer of fabric.**

*Every effort has been made to ensure that all projects are error free. All the information is presented in good faith, however no warranty can be given nor results guaranteed as we have no control over the execution of instructions. Therefore, we assume no responsibility for the use of this information or damages that may occur as a result. When errors are brought to our attention, we make every effort to correct and post a revision as soon as possible. Please make sure to check www.henryglassfabrics.net for pattern updates prior to starting the project. We also recommend that you test the project prior to cutting for kits. Finally, all free projects are intended to remain free to you and are **not for resale**.*

©2021 Henry Glass & Co., Inc.