



## Call of the Sea Quilt



Featuring the  
Call of the Sea Collection  
by Josephine Wall

Shipping to stores July 2021!

Finished Size: 39 ½" x 47 ½" (100.3 cm x 120.65 cm)

### Fabric Needed

#### 3 Wishes Fabric® Call of the Sea Collection

- 1 Panel – Merfairry Panel (17994-MLT-CTN-D)
- ¾ yd – Shells (17993-MLT-CTN-D)
- ⅝ yd – Allover Merfairry (17988-BLU-CTN-D)
- ½ yd – Fish (17989-MLT-CTN-D)  
for Piecing and Binding
- ¼ yd – Coral Reef (17990-MLT-CTN-D)
- ⅛ yd – Waves (17991-MLT-CTN-D)
- ⅛ yd – Dolphins (17992-MLT-CTN-D)
- 1 ⅝ yds – Coral Reef (17990-MLT-CTN-D) (Backing)

#### Additional Supplies Needed:

- 48" x 56" (121.92 cm x 142.24 cm) Cotton batting
- Piecing and sewing thread
- Quilting and sewing supplies
- Even-feed foot (optional for quilting)

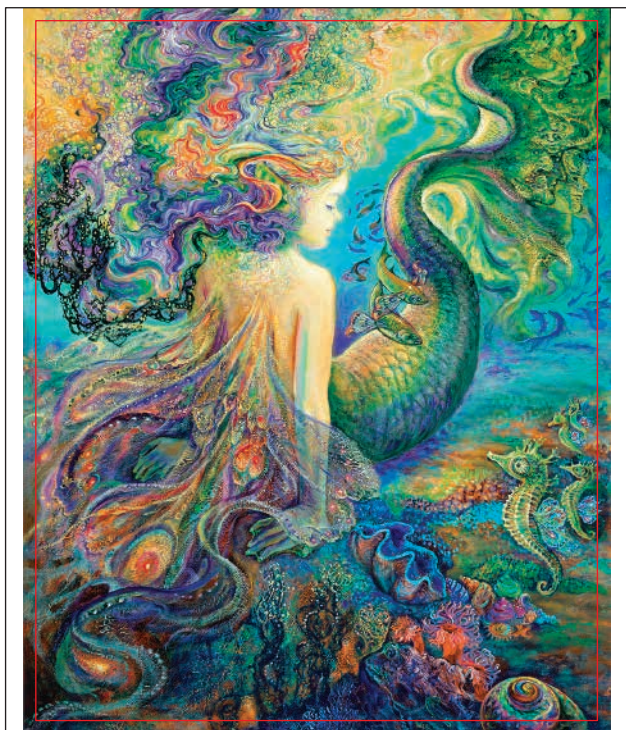
# Before You Begin

Read all instructions before beginning project. Do not pre-wash fabrics. Press fabrics with a dry iron on cotton setting before cutting. Use a ¼" (6.35mm) seam allowance and sew fabrics with right sides together (RST) unless otherwise noted. Press seams in the direction of the arrows. wof = width of fabric

## Cutting

Use a rotary cutter and ruler to cut the size and number of squares and rectangles from each fabric listed below.

**Note:** *Fabrics are directional.*



**Merfairy Panel – 17994-MLT-CTN-D**

Fussy Cut 1 – 32 ½" x 40 ½" (85.22 cm x 102.87 cm)



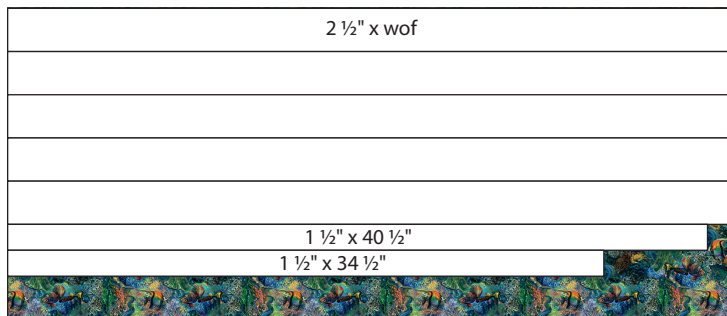
**Shells – 17993-MLT-CTN-D (¾ yd x wof / 68.58 cm x 106.68 cm)**

Cut 2 – 3" x 24 ½" (7.62 cm x 62.23 cm)



**Allover Merfairy – 17988-BLU-CTN-D (⅝ yd x wof / 57.15 cm x 106.68 cm)**

Cut 2 – 3" x 18 ½" (7.62 cm x 46.99 cm)

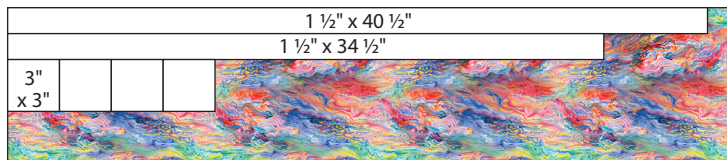


**Fish – 17989-MLT-CTN-D (½ yd x wof / 45.72 cm x 106.68 cm)**

Cut 5 – 2 ½" x wof (6.35 cm x 106.68 cm) for Binding

Cut 1 – 1 ½" x 40 ½" (3.81 cm x 102.87 cm)

Cut 1 – 1 ½" x 34 ½" (3.81 cm x 87.63 cm)

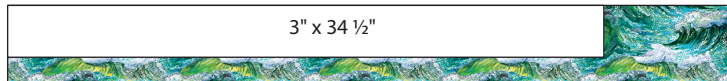


**Coral Reef – 17990-MLT-CTN-D (¼ yd x wof / 22.86 cm x 106.68 cm)**

Cut 1 – 1 ½" x 40 ½" (3.81 cm x 102.87 cm)

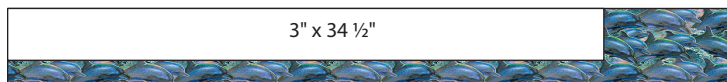
Cut 1 – 1 ½" x 34 ½" (3.81 cm x 87.63 cm)

Cut 4 – 3" x 3" (7.62 cm x 7.62 cm)



**Waves – 17991-MLT-CTN-D (⅓ yd x wof / 11.43 cm x 106.68 cm)**

Cut 1 – 3" x 34 ½" (7.62 cm x 87.63 cm)



**Dolphins – 17992-MLT-CTN-D (⅓ yd x wof / 11.43 cm x 106.68 cm)**

Cut 1 – 3" x 34 ½" (7.62 cm x 87.63 cm)

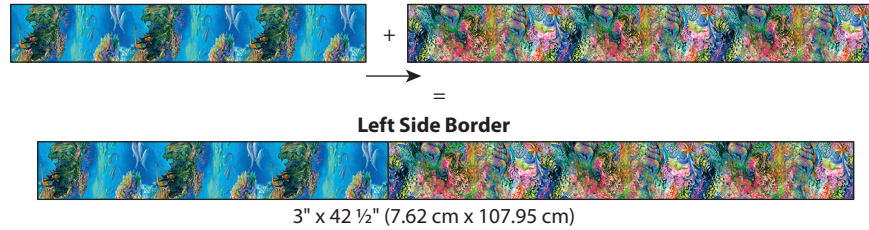


# Sewing

**Note:** Pay close attention to the placement of directional fabrics while sewing.

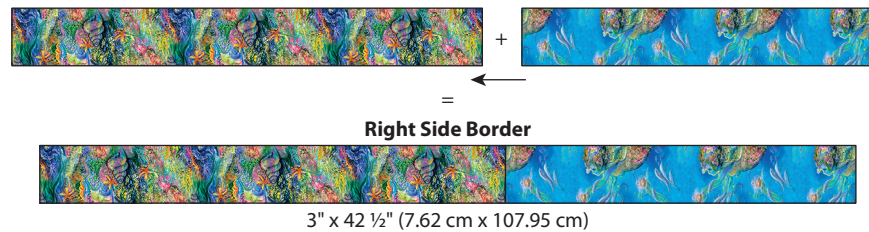
1. Place an Allover Merfairry rectangle (3" x 18 ½" / 7.62 cm x 46.99 cm) and a Shells rectangle (3" x 24 ½" / 7.62 cm x 62.23 cm) as shown in Diagram A. Pin RST, sew across the short ends and press to make the Left Side Border (3" x 42 ½" / 7.62 cm x 107.95 cm).

Dia. A



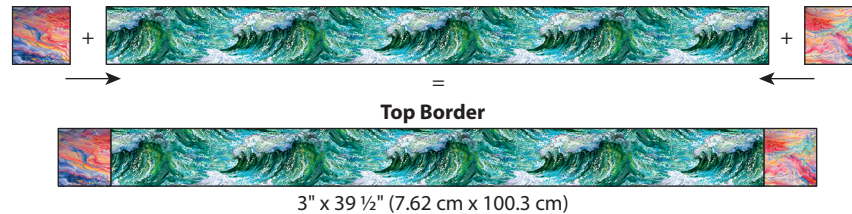
2. Follow Step 1 and Diagram B to Make the Right Side Border (3" x 42 ½" / 7.62 cm x 107.95 cm).

Dia. B



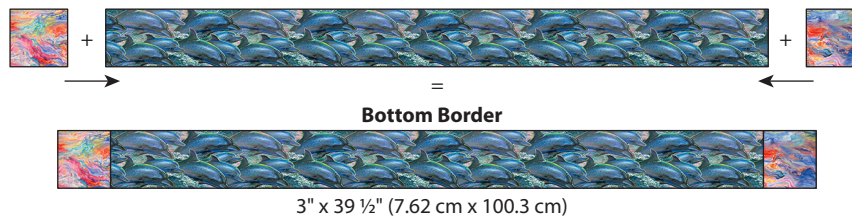
3. Place a Coral Reef square (3" x 3" / 7.62 cm x 7.62 cm) on each side of the Waves rectangle (3" x 34 ½" / 7.62 cm x 87.63 cm) as shown in Diagram C. Pin RST, sew and press to make the Top Border (3" x 39 ½" / 7.62 cm x 100.3 cm).

Dia. C

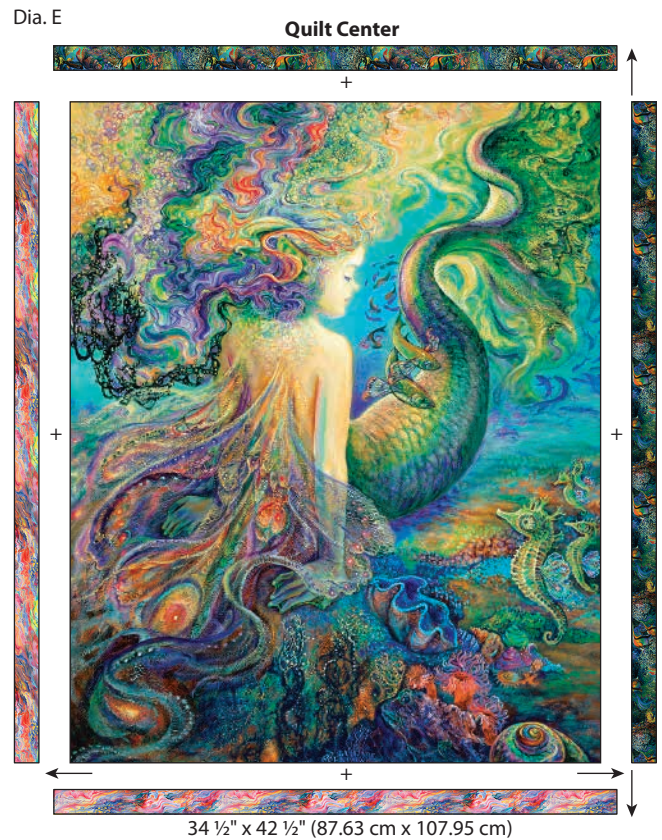


4. Place a Coral Reef square (3" x 3" / 7.62 cm x 7.62 cm) on each side of the Dolphins rectangle (3" x 34 ½" / 7.62 cm x 87.63 cm) as shown in Diagram D. Pin RST, sew and press to make the Bottom Border (3" x 39 ½" / 7.62 cm x 100.3 cm).

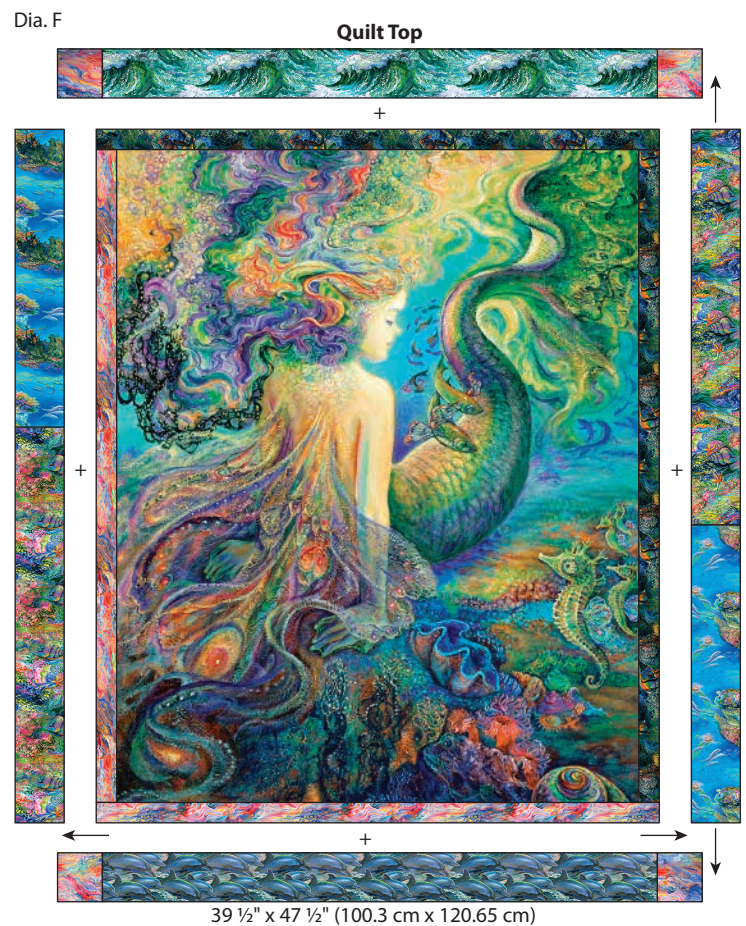
Dia. D



5. Place the Coral Reef and Fish strips (1 ½" x 40 ½" / 3.81 cm x 102.87 cm) on each side of the Fussy Cut Merfairry Panel (32 ½" x 40 ½" / 85.22 cm x 102.87 cm) as shown in Diagram E. Pin RST matching ends and middles, sew and press. Place the Coral Reef and Fish strips (1 ½" x 34 ½" / 3.81 cm x 87.63 cm) on the top and bottom as shown. Pin RST matching ends and middles, sew and press. The Quilt Center should measure 34 ½" x 42 ½" (87.63 cm x 107.95 cm).



6. Place the Side Borders as shown in Diagram F. **Note:** Check that placement of border fabrics is correct. Pin RST matching ends and middles, sew and press. Place the Top and Bottom Borders as shown. Pin RST matching ends and middles, sew and press. The Quilt Top should measure 39 ½" x 47 ½" (100.3 cm x 120.65 cm).



# Finishing

7. The Coral Reef Backing is enough to cover the length and width of the Quilt Top. If using a long arm machine to quilt, extra fabric basted onto Backing edges may be necessary.
8. Press finished Quilt Top and Backing. Tape the Backing, **wrong** side up, to a firm surface. Layer Batting and Quilt Top (right side up). Baste the layers together with safety pins. Quilt as desired.
9. Once quilting is complete, square up corners and edges, trimming excess Backing and Batting even with the Quilt Top.

Dia. G

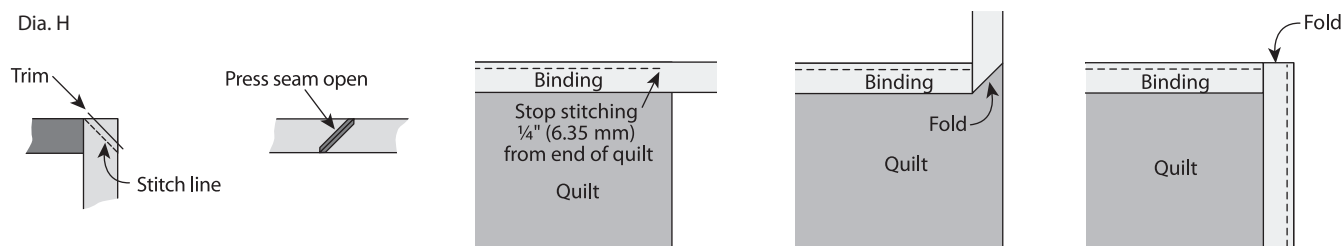


Backing

42" x 58 1/2" (106.68 cm x 148.59 cm)

10. **Binding** – Follow Diagram H to make Binding from the Fish fabric. Remove selvages and sew the short ends of the five 2 1/2" (6.35 cm) x wof strips RST end to end at a 45° angle to make one continuous strip; press seams open. Press one short end 1/4" (6.35 mm) to the **wrong** side. Fold in half lengthwise with **wrong** sides together; press. Leaving a 2" (5.08 cm) tail on the folded end, place cut edges of folded Binding even with the edge of the Quilt Top and sew, mitering the corners. Overlap ends, trim any excess and finish sewing the Binding. Fold Binding over to back and hand stitch.

Dia. H



## Finished Care Instructions

Machine wash in cold water; gentle cycle. Do not bleach. **Tip:** Before drying, check for fabric dyes that may have run. If fabric dyes run, rewash and rinse using a color catcher to absorb loose dye. Lay flat to dry or tumble dry low.