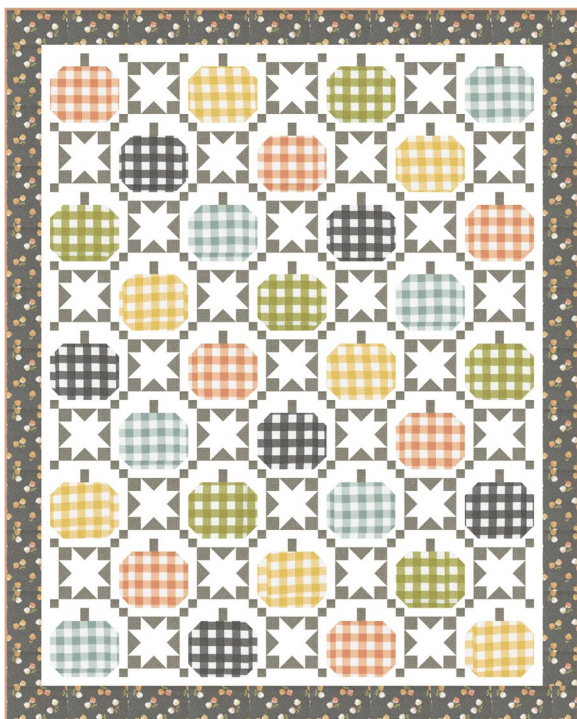


Autumnal Quilt
66" x 82"



Fabrics Needed:

- 1/2 yard **each** of 5 checked fabrics for Pumpkin Blocks
- 1 3/8 yards gray pin dot for Pumpkin Stems and Star Blocks
- 3 yards background fabric
- 1 1/4 yard outer border fabric
- 2/3 yard binding fabric
- 5 1/8 yards backing fabric
- 74" x 90" batting

Pro-Tip: Use an 8 1/2" square ruler to aid in cutting the checked fabrics

Cutting Instructions:

wof = width of fabric

From the checked fabrics cut a total of:

(32) rectangles, 7" x 8 1/2" **(A)**

From the gray pin dot cut:

- (2) strips 1 1/2" x wof; subcut (32) rectangles, 1 1/2" x 2" **(B)**
- (11) strips 2" x wof; subcut (124) rectangles, 2" x 3 1/2" **(C)**
- (7) strips 2" x wof; subcut (124) squares, 2" x 2" **(D)**
- (5) strips 1 1/2" x wof; subcut (124) squares, 1 1/2" x 1 1/2" **(E)**

From the background fabric cut:

- (19) strips 2" x wof; subcut (376) squares, 2" x 2" **(F)**
- (7) strips 2" x wof; subcut (64) rectangles, 2" x 4" **(G)**
- (3) strips 3 1/2" x wof; subcut (31) squares, 3 1/2" x 3 1/2" **(H)**
- (21) strips 1 1/2" x wof; subcut (124) rectangles, 1 1/2" x 6 1/2" **(I)**
- (7) strips 1 1/2" x wof; trim selvages, sew end to end and cut:
 - (2) border strips, 1 1/2" x 72 1/2" **(J)**
 - (2) border strips, 1 1/2" x 58 1/2" **(K)**

From the outer border fabric cut:

- (8) strips 4 1/2" x wof; trim selvages, sew end to end and cut:
 - (2) outer border strips, 4 1/2" x 74 1/2" **(L)**
 - (2) outer border strips, 4 1/2" x 66 1/2" **(M)**

From the binding fabric cut:

- (8) strips 2 1/2" x wof; trim selvages, sew the strips together to form continuous binding

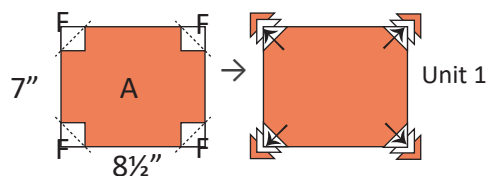
From the backing fabric cut:

- (2) pieces 91" x wof; sew the pieces together to form the backing

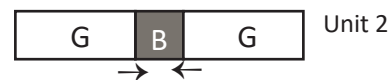
Pumpkin Block

RST=right sides together
use a 1/4" seam allowance
read through all instructions before beginning

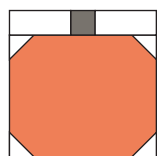
1. Draw a diagonal line across the back of four background **(F)** squares. Place **(F)** RST, on each corner of a print **(A)** rectangle. Orient the diagonals as illustrated. Sew on the marked lines. Press away from the center. Make sure all raw edges align. Trim out the bottom two layers of each corner leaving a 1/4" seam allowance. Unit 1 will measure 7" x 8 1/2".



2. Sew together two background **(G)** rectangles and one print **(B)** rectangle. Press toward **(B)**. Unit 2 will measure 2" x 8 1/2".



3. Sew together units 1 & 2 to complete a Pumpkin block. The Pumpkin block will measure $8\frac{1}{2}'' \times 8\frac{1}{2}''$.

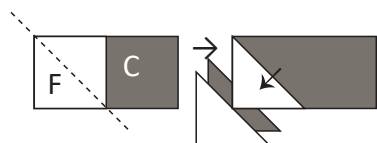


Pumpkin Block

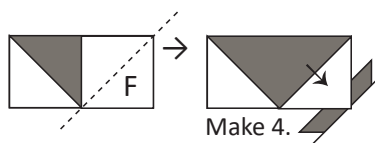
4. Repeat steps 1-3 to make a total of 32 pumpkin blocks.

Star Block

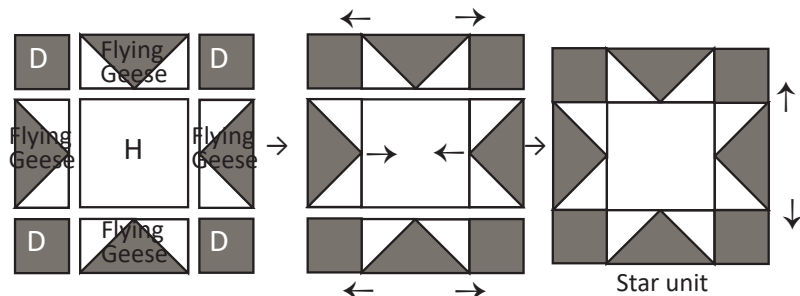
1. Draw a diagonal line across the back of one background (F) square. Place the (F) square RST on the corner of a print (C) rectangle. Orient the diagonal as illustrated. Sew on the marked line. Press away from the center. Make sure all raw edges align. Trim out the bottom two layers leaving a $\frac{1}{4}''$ seam allowance.



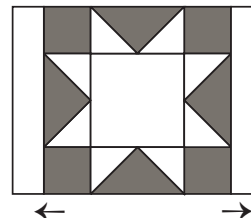
2. Repeat step 1 on the opposite corner as illustrated. The completed flying geese unit will measure $2'' \times 3\frac{1}{2}''$. Repeat to make 4 flying geese units.



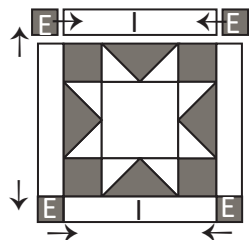
3. Sew together the 4 Flying Geese units, 1 background (H) square, and 4 print (D) squares as illustrated to make a Star unit. Press away from the flying geese in each row. Press the last two seams away from the center. The Star unit will measure $6\frac{1}{2}'' \times 6\frac{1}{2}''$.



4. Sew a background (I) rectangle to the sides of the Star unit. Press away from the center.



5. Sew a print (E) square to each side of a background (I) rectangle. Press seams toward (I). Make 2. Sew to the top/bottom of the unit made in Step 4. Press seams away from the center. The completed star block will measure $8\frac{1}{2}'' \times 8\frac{1}{2}''$.



6. Repeat steps 1-5 to make a total of 31 star blocks.

Quilt Top Construction

The Autumnal quilt top is constructed by sewing together 9 rows of 7 blocks. Alternate Pumpkin and Star blocks as illustrated. Press toward the Pumpkin blocks in each row. When sewing together the completed rows, press in one direction.

Add the Borders (press seams toward borders)

1. Sew (J) to the sides of the quilt
2. Sew (K) to the top/bottom of the quilt
3. Sew (L) to the sides of the quilt
4. Sew (M) to the top/bottom of the quilt (The completed quilt top will measure $66\frac{1}{2}'' \times 82\frac{1}{2}''$.)

Finishing the Quilt

Baste the quilt top, batting and backing fabric together using your preferred method. Quilt as desired and bind using the $2\frac{1}{2}''$ prepared binding strips.

