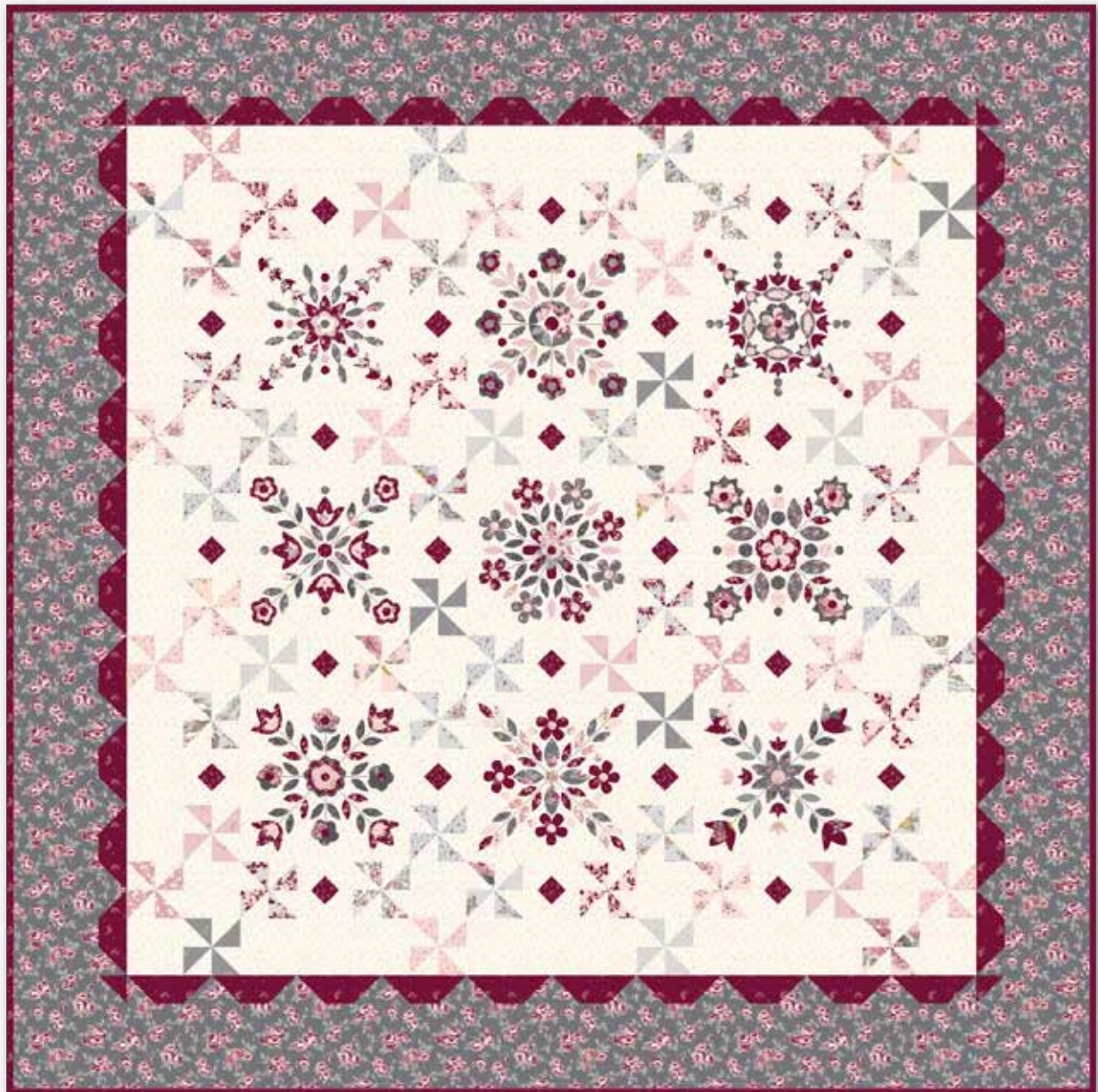


EXQUISITELY BALTIMORE



 *Exquisite*
by Gerri Robinson
of Planted Seed Designs™

EXQUISITELY BALTIMORE

FINISHED QUILT SIZE 76" x 76"

Measurements include ¼" seam allowance.

Sew with right sides together unless otherwise stated.

Please check our website www.rileyblakedesigns.com/pattern-updates for any revisions before starting this project. This pattern requires a basic knowledge of quilting technique and terminology. The quilt and block diagrams portrayed are virtual images. The layout and look of your project may differ when using actual fabric.

FABRIC REQUIREMENTS

1 Block Blossom Panel (P10708 Panel)

⅓ Yard of each of the following 13 Exquisite prints:

- Blush Main (SC10700 Blush)
- Gray Main (SC10700 Gray)
- Gray Paisley (SC10701 Gray)
- Blush Flowers (C10702 Blush)
- Gray Flowers (C10702 Gray)
- Blush Blooms (SC10703 Blush)
- Gray Blooms (SC10703 Gray)
- Pink Vines (C10704 Pink)
- Blush Stems (C10705 Blush)
- Gray Stems (C10705 Gray)
- Gray Ditsy (SC10706 Gray)
- Dusk Bouquet (SC10707 Dusk)
- Pink Bouquet (SC10707 Pink)

2 Yards Charcoal Flowers (C10702 Charcoal)

2¼ Yards Cream Stems (C10705 Stems)

¼ Yard Burgundy Ditsy (SC10706 Burgundy)

1¼ Yard Burgundy Bouquet (SC10707 Burgundy)*

* Includes binding

CUTTING REQUIREMENTS

Please read instructions first before cutting.

WOF - width of fabric.

Label pieces as they are cut.

Block Blossom Panel

Fussy cut 9 l squares 12½" x 12½", centered over the 9 panel motifs.

13 Exquisite Prints

Cut 1 strip 3" x WOF from each print.

Sub-cut from strip:

10 - 3" squares of each print (A)

Charcoal Flowers

Cut 8 strips 6½" x WOF for Border 2.

Cut 6 strips 2½" x WOF.

Sub-cut from strips:

84 - 2½" squares (H)

Cream Stems

Cut 6 strips 4½" x WOF.

Sub-cut from strips:

12 - 4½" x 12½" rectangles (C)

20 - 4½" squares (D)

Cut 10 strips 3" x WOF.

Sub-cut from strips:

128 - 3" squares (B)

Cut 6 strips 2½" x WOF.

Sub-cut from strips:

96 - 2½" squares (J)

Burgundy Ditsy

Cut 4 strips 1½" x WOF.

Sub-cut from strips:

96 - 1½" squares (E)

Burgundy Bouquet

Cut 7 strips 2½" x WOF.

Sub-cut from strips:

40 - 2½" x 6½" rectangles (F)

4 - 2½" squares (G)

Cut 8 strips 2½" x WOF for Binding.

QUILT ASSEMBLY

Refer to the quilt photo and layout for the placement of prints. Press seam allowances as shown in the diagrams unless otherwise stated.

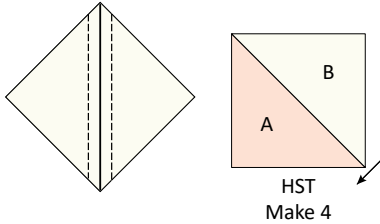
Pinwheels

Select 2 A squares of the same print and 2 B squares.

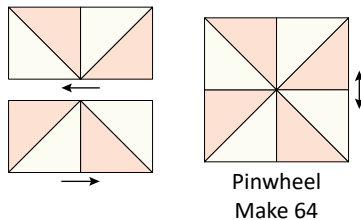
Draw a diagonal line on the wrong side of the B squares.

EXQUISITELY BALTIMORE

Place 1 A and 1 B square right sides together (RST). Sew $\frac{1}{4}$ " on each side of the drawn line. Cut along the drawn line for 2 half square triangles (HSTs). Press the seam allowance towards the A piece. Trim the HSTs to $2\frac{1}{2}$ " x $2\frac{1}{2}$ ". Repeat to make 4 HSTs.



Lay out the HSTs in a four patch. Sew the HSTs together in rows. Sew the rows together to complete 1 Pinwheel ($4\frac{1}{2}$ " x $4\frac{1}{2}$ ").



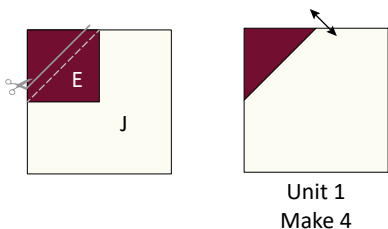
Repeat to make 64 Pinwheels. There will be 2 A squares left over.

Diamond Blocks

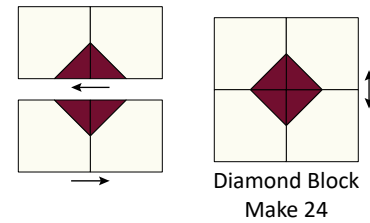
Select 4 J squares and 4 E squares.

Draw a diagonal line on the wrong side of the E squares.

Place 1 E square on the upper left corner of 1 J square, RST. Sew on the drawn line. Trim the seam allowance above the sewn line to $\frac{1}{4}$ ". Flip the E piece away from the B square to make 1 Unit 1. Repeat to make 4 Unit 1 ($2\frac{1}{2}$ " x $2\frac{1}{2}$ ").



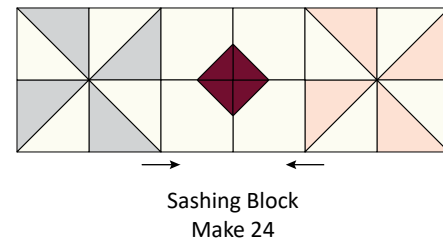
Lay out the Unit 1 in a four patch. Sew the units together in rows. Sew the rows together to complete 1 Diamond Block ($4\frac{1}{2}$ " x $4\frac{1}{2}$ ").



Repeat to make 24 Diamond Blocks.

Sashing Blocks

Sew 1 Diamond Block between 2 Pinwheels to complete 1 Sashing Block ($4\frac{1}{2}$ " x $12\frac{1}{2}$ ").



Repeat to make 24 Sashing Blocks.

Quilt Center

Refer to the quilt layout (page 4) for block placement.

Sew together 4 Pinwheels, alternating with 3 C rectangles. Sew a D square to each end to make 1 Row 1 ($4\frac{1}{2}$ " x $60\frac{1}{2}$ "). Repeat to make 2 Row 1.

Sew together 4 D squares, alternating with 3 Sashing Blocks. Sew a Pinwheel to each end to make 1 Row 2 ($4\frac{1}{2}$ " x $60\frac{1}{2}$ "). Repeat to make 4 Row 2.

Sew together 4 Sashing Blocks, alternating with 3 I squares. Sew a C rectangle to each end to make 1 Row 3 ($12\frac{1}{2}$ " x $60\frac{1}{2}$ "). Repeat to make 3 Row 3.

Sew together the Row 2, alternating with the Row 3. Sew the Row 1 to the top and bottom to complete the Quilt Center ($60\frac{1}{2}$ " x $60\frac{1}{2}$ ").

EXQUISITELY BALTIMORE

Borders

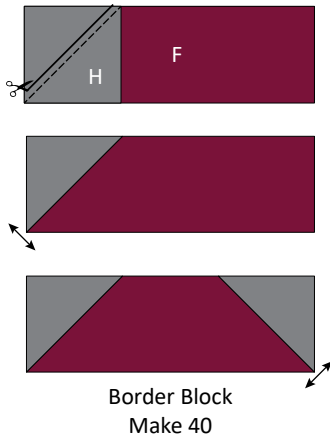
Seam allowances vary so measure through the center of the quilt before cutting border pieces. Piece borders strips together end to end where necessary.

Sew side borders first. Press seam allowances towards the borders.

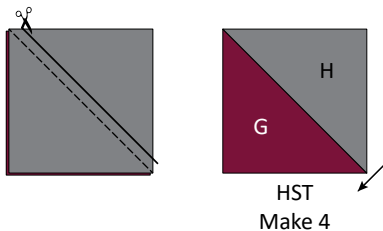
Border 1

Draw a diagonal line on the wrong side of the H squares.

Place 1 H square on the upper left corner of 1 F rectangle, RST. Sew on the drawn line. Trim the seam allowance above the sewn line to $\frac{1}{4}$ ". Flip the H piece away from the F rectangle. Repeat to sew the a H square to the upper right corner to make 1 Border Block ($2\frac{1}{2}$ " x $6\frac{1}{2}$ "). Repeat to make 40 Border Blocks.



Place 1 H and G square RST. Sew on the drawn line. Trim the seam allowance above the sewn line to $\frac{1}{4}$ ". Press the seam allowance towards the G piece to make 1 Border HST. Repeat to make 4 Border HSTs ($2\frac{1}{2}$ " x $2\frac{1}{2}$ ").



Sew together 10 Border Blocks end to end. Repeat to make 4 border strips ($2\frac{1}{2}$ " x $60\frac{1}{2}$ ").

Sew border strips to the left and right edges of the Quilt Center ($60\frac{1}{2}$ " x $64\frac{1}{2}$ ").

Sew a Border HST to each end of the remaining 2 border strips and sew to the top and bottom edges of the Quilt Center ($64\frac{1}{2}$ " x $64\frac{1}{2}$ ").

Border 2

Side borders should be $64\frac{1}{2}$ ". Top and bottom borders should be $76\frac{1}{2}$ ".

Finish quilt by layering the quilt top, batting, and back. Bind with the Burgundy Bouquet strips. Have fun with your colors and enjoy the journey of making your quilt.

EXQUISITELY BALTIMORE

Quilt Layout Diagram

