

# SNOW PLACE LIKE HOME FLANNEL

• A Free Project Sheet •  
• NOT FOR RESALE •

QUILT 2



Featuring fabrics from the **Snow Place Like Home Flannel** collection by **Sharla Fults** for **STUDIO e fabrics**

## Fabric Requirements

(A) F5714-98 .....	2/3 yard	(I) F5705-89 .....	1/2 yard
(B) F5708-88 .....	1 1/2 yards*	(J) F5712-98 .....	5/8 yard
(C) F5708-09 .....	1 1/2 yards	(K) F5703-09 .....	3/8 yard
(D) F5712-68 .....	1/4 yard	(L) F5706-98 .....	1 3/8 yards
(E) F5711-86 .....	1/4 yard	Backing	
(F) F5704-90 .....	1/3 yard	F5701-98 .....	4 3/4 yards
(G) F5702-80 .....	3/8 yard		
(H) F5711-96 .....	3/8 yard		

\* Includes Binding

## Additional Supplies Needed

Batting 78" x 84" (Recommended:  
Air Lite® Colour Me 100% Cotton)  
Piecing and sewing thread  
Quilting and sewing supplies

Quilt designed by Heidi Pridemore  
Finished Quilt Size 70" x 76"  
Skill Level: Advanced Beginner

Please check our website for pattern updates before starting this project.

## Fabrics in the Collection



Patch  
Multi - F5701-98



Tossed Snowflakes  
Red - F5702-80



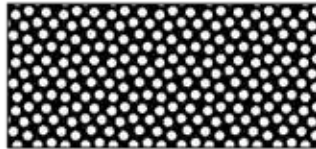
Tossed Snowflakes  
Gray - F5702-90



Packed Snowmen  
Multi - F5703-09



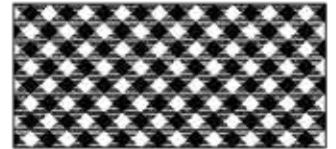
Dots  
Red - F5704-80



Dots  
Black - F5704-90



Buffalo Plaid  
Red - F5705-89



Buffalo Plaid  
Black - F5705-90



Tossed Bird Houses  
Black - F5706-98



Tossed Snowmen  
Multi - F5707-09



Swirl  
White - F5708-09



Swirl  
Green - F5708-66



Swirl  
Red - F5708-88



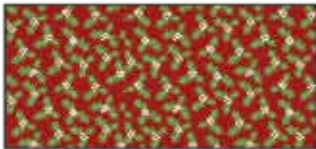
Tossed Wreath  
White - F5709-06



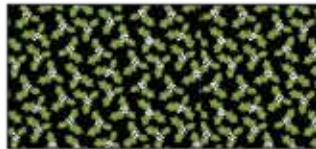
Tossed Wreath  
Multi - F5709-36



Tossed Wreath  
Black - F5710-96



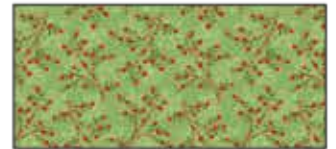
Tossed Holly Leaves  
Red - F5711-86



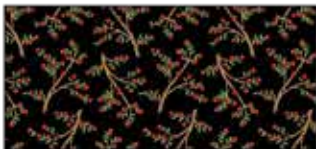
Tossed Holly Leaves  
Black - F5711-96



Tossed Sprigs  
White - F5712-08



Tossed Sprigs  
Green - F5712-68



Tossed Sprigs  
Black - F5712-98



Border Stripe  
Multi - F5713-98



Blocks  
Multi - F5714-98



Panel  
Multi - F5715P-98

## Cutting

### Cutting Instructions

*Please note: All strips are cut across the width of fabric (WOF) from selvage to selvage edge unless otherwise noted.*

WOF= Width of Fabric • LOF = Length of Fabric

#### **Fabric A (F5714-98 9" x 10.75" Blocks – Multi):**

- Fussy cut (6) 9 ½" x 11" rectangles, each centered on a block.

#### **Fabric B (F5708-88 Swirl – Red), cut:**

- (4) 3" x WOF strips, sub-cut (12) 3" x 12 ½" strips.
- (2) 2 ¼" x WOF strips, sub-cut (4) 2 ¼" x 11 ½" strips.
- (4) 2" x WOF strips, sub-cut (12) 2" x 11" strips.
- (2) 1 ½" x WOF strips, sub-cut (4) 1 ½" x 11" strips.
- (8) 2 ½" x WOF strips for the binding.

#### **Fabric C (F5708-09 Swirl – White), cut:**

- (4) 2 ½" x WOF strips. Sew the strips together end to end with diagonal seams and cut (2) 2 ½" x 62 ½" strips.
- (3) 2 ½" x WOF strips. Sew the strips together end to end with diagonal seams and cut (2) 2 ½" x 60 ½" strips.
- (5) 2 ½" x WOF strips. Sew the strips together end to end with diagonal seams and cut (3) 2 ½" x 56 ½" strips.
- (8) 2" x WOF strips, sub-cut (16) 2" x 14 ½" strips.

#### **Fabric D (F5712-68 Tossed Sprigs – Green), cut:**

- (1) 3 ½" x WOF strip, sub-cut (8) 3 ½" squares.

#### **Fabric E (F5711-86 Tossed Holly Leaves – Red), cut:**

- (1) 2" x WOF strip, sub-cut (8) 2" x 3 ½" strips.
- (1) 2" x WOF strip, sub-cut (8) 2" x 5" strips.

#### **Fabric F (F5704-90 Dots – Black), cut:**

- (1) 2" x WOF strip, sub-cut (8) 2" x 5" strips.
- (2) 2" x WOF strips, sub-cut (8) 2" x 6 ½" strips.

#### **Fabric G (F5702-80 Tossed Snowflakes – Red), cut:**

- (2) 2 ½" x WOF strips, sub-cut (8) 2 ½" x 6 ½" strips.
- (2) 2 ½" x WOF strips, sub-cut (8) 2 ½" x 8 ½" strips.

#### **Fabric H (F5711-96 Tossed Holly Leaves – Black, cut:**

- (2) 2 ½" x WOF strips, sub-cut (8) 2 ½" x 8 ½" strips.
- (2) 2 ½" x WOF strips, sub-cut (8) 2 ½" x 10 ½" strips.

#### **Fabric I (F5705-89 Buffalo Plaid – Red), cut:**

- (2) 2 ½" x WOF strips, sub-cut (8) 2 ½" x 10 ½" strips.
- (3) 2 ½" x WOF strips, sub-cut (8) 2 ½" x 12 ½" strips.

#### **Fabric J (F5712-98 Tossed Sprigs – Black), cut**

- (3) 2 ½" x WOF strips, sub-cut (8) 2 ½" x 12 ½" strips.
- (4) 2 ½" x WOF strips, sub-cut (8) 2 ½" x 14 ½" strips.

#### **Fabric K (F5703-09 Packed Snowmen – Multi), cut:**

- (1) 11" x WOF strip, sub-cut (2) 11" x 9 ½" rectangles.

#### **Fabric L (F5706-98 Tossed Bird Houses – Black), cut:**

- (4) 5 ½" x WOF strips. Sew the strips together end to end with diagonal seams and cut (2) 5 ½" x 66 ½" strips.
- (4) 5 ½" x WOF strips. Sew the strips together end to end with diagonal seams and cut (2) 5 ½" x 70 ½" strips.

#### **Backing (F5701-98 Patch – Multi), cut:**

- (2) 84" x WOF strips. Sew the strips together and trim to 78" x 84" to make the back.

## Sewing

Sew using a  $\frac{1}{4}$ " seam allowance with right sides together (RST) unless otherwise indicated. Always press towards the darker fabric while assembling, unless otherwise noted by the arrows.

### Block Assembly

**Note: The arrows in figures represent the fabric print direction. Pay attention to the fabric and unit orientations when assembling the various components.**

1. Sew (1) 2" x 11" Fabric B strip to each side of (1) 9  $\frac{1}{2}$ " x 11" Fabric A rectangle. Sew (1) 3" x 12  $\frac{1}{2}$ " Fabric B strip to the top and to the bottom of the Fabric A rectangle to make (1) Unit 1 rectangle (Fig. 1). **Trim the unit to measure 11  $\frac{1}{2}$ " x 14  $\frac{1}{2}$ ".** Repeat to make (6) Unit 1 rectangles total.
2. Sew (1) 1  $\frac{1}{2}$ " x 11" Fabric B strip to each side of (1) 9  $\frac{1}{2}$ " x 11" Fabric K rectangle. Sew (1) 2  $\frac{1}{4}$ " x 11  $\frac{1}{2}$ " Fabric B strip to the top and to the bottom of the Fabric K rectangle to make (1) Unit 2 rectangle (Fig. 2). Repeat to make a second Unit 2 rectangle.
3. Sew (1) 2" x 14  $\frac{1}{2}$ " Fabric C strip to each side of (1) Unit 1 rectangle to make (1) Block One square (Fig. 3). The block should measure 14  $\frac{1}{2}$ " square. Repeat to make (6) Block One squares total.
4. Sew (1) 2" x 14  $\frac{1}{2}$ " Fabric C strip to each side of (1) Unit 2 rectangle to make (1) Block Two square (Fig. 4). The block should measure 14  $\frac{1}{2}$ " square. Repeat to make a second Block Two square.

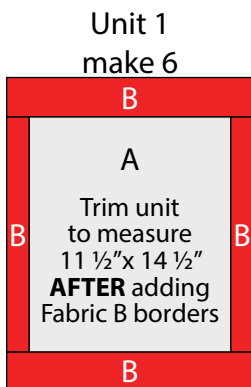


Fig. 1

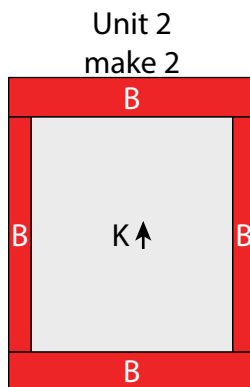


Fig. 2

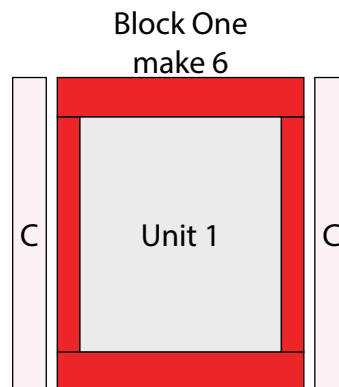


Fig. 3

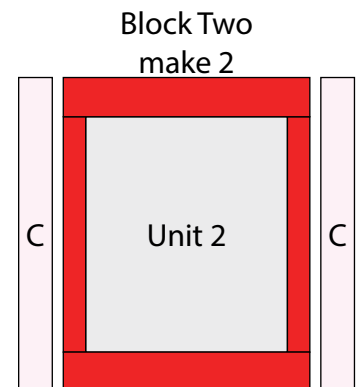


Fig. 4

5. Sew (1) 2" x 3  $\frac{1}{2}$ " Fabric E strip to the left side of (1) 3  $\frac{1}{2}$ " Fabric D square. Sew (1) 2" x 5" Fabric E strip to the top of the newly sewn strip to make (1) Unit 3 square (Fig. 5). Repeat to make (8) Unit 3 squares total.
6. Sew (1) 2" x 5" Fabric F strip to the right side of (1) Unit 3 square. Sew (1) 2" x 6  $\frac{1}{2}$ " Fabric F strip to the bottom of the Unit 3 square to make (1) Unit 4 square (Fig. 6). Repeat to make (8) Unit 4 squares total.
7. Sew (1) 2  $\frac{1}{2}$ " x 6  $\frac{1}{2}$ " Fabric G strip to the left side of (1) Unit 4 square. Sew (1) 2  $\frac{1}{2}$ " x 8  $\frac{1}{2}$ " Fabric G strip to the top of the Unit 4 square to make (1) Unit 5 square (Fig. 7). Repeat to make (8) Unit 5 squares total.



Fig. 5

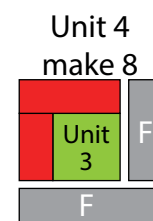


Fig. 6

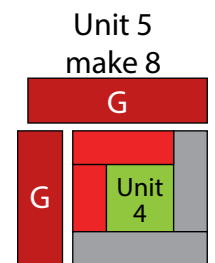


Fig. 7

8. Sew (1) 2 ½" x 8 ½" Fabric H strip to the right side of (1) Unit 5 square. Sew (1) 2 ½" x 10 ½" Fabric H strip to the bottom of the Unit 5 square to make (1) Unit 6 square (Fig. 8). Repeat to make (8) Unit 6 squares total.

9. Sew (1) 2 ½" x 10 ½" Fabric I strip to the top side of (1) Unit 6 square. Sew (1) 2 ½" x 12 ½" Fabric I strip to the left side of the Unit 6 square to make (1) Unit 7 square (Fig. 9). Repeat to make (8) Unit 7 squares total.

10. Sew (1) 2 ½" x 12 ½" Fabric J strip to the right side of (1) Unit 7 square. Sew (1) 2 ½" x 14 ½" Fabric J strip to the bottom of the Unit 7 square to make (1) Block Three square (Fig. 10). Repeat to make (8) Block Three squares total.

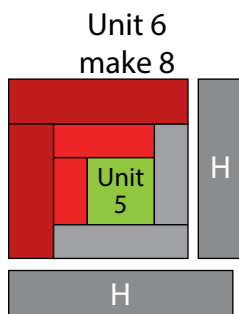


Fig. 8

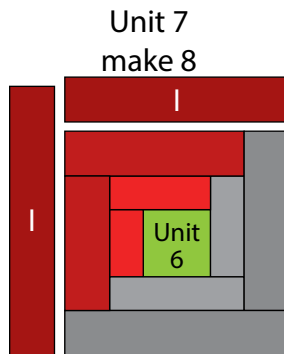


Fig. 9

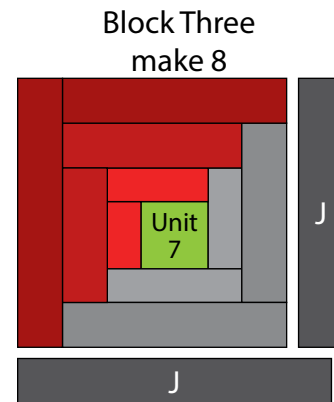


Fig. 10

## Quilt Top Assembly

*(Follow the Quilt Layout while assembling the quilt top.)*

11. Sew together (1) Block One square, (2) Block Three squares and (1) Block One square, in that order from left to right, to make Row One. Repeat to make Row Four.

12. Sew together (1) Block Three square, (1) Block One square, (1) Block Two square and (1) Block Three square, in that order from left to right, to make Row Two.

13. Sew together (1) Block Three square, (1) Block Two square, (1) Block One square and (1) Block Three square, in that order from left to right, to make Row Three.

14. Sew together the (4) pieced Rows, in numerical order, and the (3) 2 ½" x 56 ½" Fabric C strips, lengthwise and alternating them from top to bottom, to make the Center Block.

15. Sew (1) 2 ½" x 62 ½" Fabric C strip to each side of the Center Block. Sew (1) 2 ½" x 60 ½" Fabric C strip to the top and to the bottom of the Center Block.

16. Sew (1) 5 ½" x 66 ½" Fabric L strip to each side of the Center Block. Sew (1) 5 ½" x 70 ½" Fabric L strip to the top and to the bottom of the Center Block to make the quilt top.

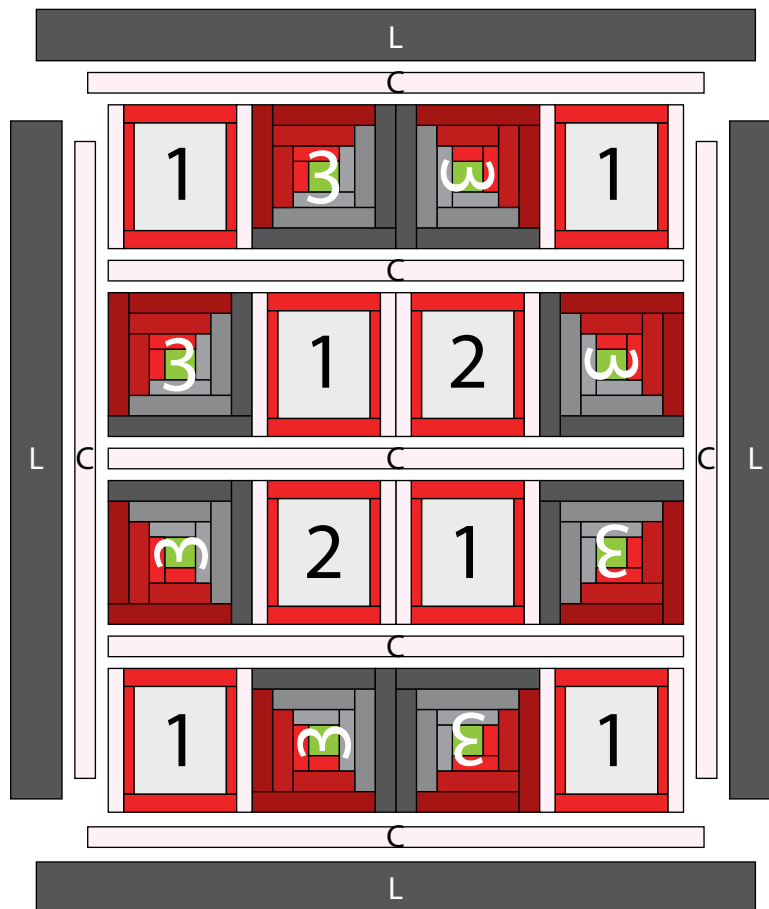
## Layering, Quilting and Finishing

17. Press the quilt top and 78" x 84" backing well. Layer backing (wrong side up), batting, pressed quilt top (right side up) and baste. Quilt as desired and trim excess batting and backing when quilting is complete.

## Binding

18. Cut the ends of the (8) Fabric B binding strips at a 45-degree angle and sew end to end to make (1) continuous piece of binding. Fold in half lengthwise and press wrong sides together.

19. Sew the binding to the front of the quilt, raw edges together. Turn the folded edge to the back, and hand stitch in place.



Quilt Layout

*Every effort has been made to ensure that all projects are error free. All the information is presented in good faith, however no warranty can be given nor results guaranteed as we have no control over the execution of instructions. Therefore, we assume no responsibility for the use of this information or damages that may occur as a result. When errors are brought to our attention, we make every effort to correct and post a revision as soon as possible. Please make sure to check [www.studioefabrics.net](http://www.studioefabrics.net) for pattern updates prior to starting the project. We also recommend that you test the project prior to cutting for kits. Finally, all free projects are intended to remain free to you and are **not for resale**.*