

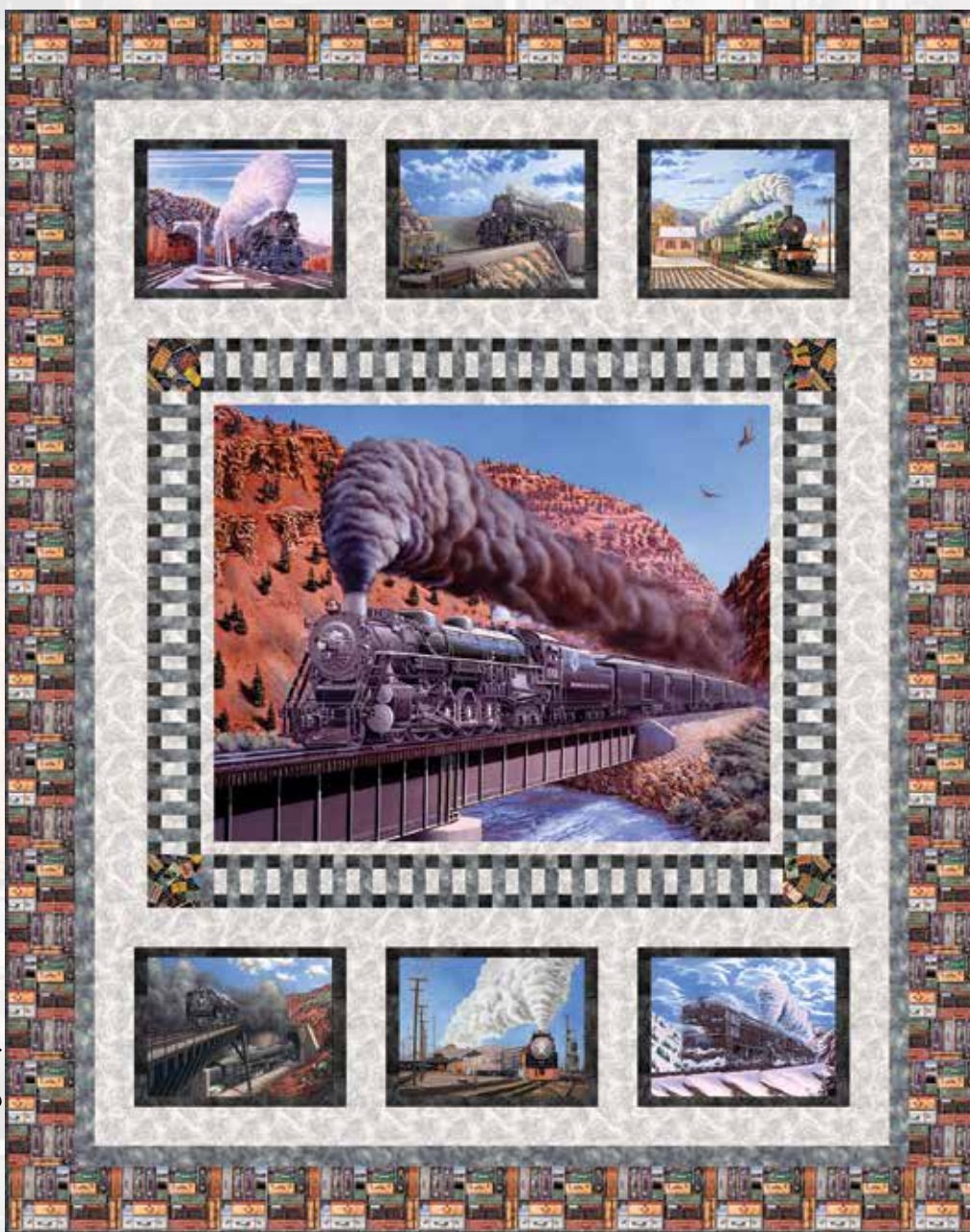
# Express Tracks

A Free Project Sheet  
NOT FOR RESALE

By Marc Desobeau

Quilt 1

Quilt Design by Heidi Pridemore



Skill Level: Advanced Beginner



facebook

Finished Quilt Size: 73" x 92"  
49 West 37th Street, 14th floor, New York, NY 10018  
Toll Free: 800-294-9495  
fax: 212-679-4578  
[www.blankquilting.net](http://www.blankquilting.net)

Please check our website for pattern updates before starting this project.



# EXPRESS TRACKS

Quilt 1

## Fabrics in the Express Tracks Collection



Train Blocks - Black  
1296-99



Tossed Trains - Gray  
1297-95



Train Station Signs - Gray  
1298-95



Train Smoke - Gray  
1299-95



Train Stubs - Black  
1300-99



Crossing Trains - Gray  
1301-95



Suitcases - Brown  
1302-39

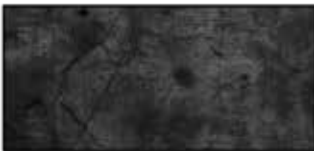


Train Tonal - Light Gray  
1303-90



Train Tonal - Charcoal  
1303-98

Select Fabric from  
the Urban Legend  
Collection



Black  
7101-98



Train Panel - Brown  
1304P-39

### Materials

1 panel	Train Panel - Brown (A)	1304P-39
2 1/8 yards	Train Tonal - Light Gray (B)	1303-90
1 1/2 yards	Urban Legend - Black (C)	7101-98*
1 yard	Train Smoke - Gray (D)	1299-95
1/4 yard	Train Stubs - Black (E)	1300-99
2/3 yard	Train Blocks - Black (F)	1296-99
2 1/2 yards	Suitcases - Brown (G)	1302-39
5 3/4 yards	Tossed Trains - Gray (Backing)	1297-95

\*Includes binding

### Cutting Instructions

Please note: all strips are cut across the width of fabric (WOF) from selvage to selvage edge unless otherwise noted.

#### From the Train Panel - Brown (A):

- Fussy cut (1) 42 1/2" x 33 1/2" rectangle, centered on the panel.

#### From the Train Tonal - Light Gray (B), cut:

- (3) 4 1/2" x WOF strips. Sew the strips together end to end with diagonal seams and cut (2) 4 1/2" x 43 1/2" strips.
- (3) 3 1/2" x WOF strips. Sub-cut (8) 3 1/2" x 12 1/2" strips.
- (6) 3 1/2" x WOF strips. Sew the strips together end to end with diagonal seams and cut (4) 3 1/2" x 60 1/2" strips.
- (3) 2 1/2" x WOF strips.
- (3) 2" x WOF strips. Sew the strips together end to end with diagonal seams and cut (2) 2" x 45 1/2" strips.
- (2) 2" x 33 1/2" WOF strips.

#### From the Urban Legend - Black (C), cut:

- (4) 2" x WOF strips. Sub-cut (12) 2" x 11 1/2" strips.
- (6) 2" x WOF strips. Sub-cut (12) 2" x 17 1/2" strips.
- (6) 1 1/2" x WOF strips.
- (9) 2 1/2" x WOF strips for the binding.

#### From the Train Smoke - Gray (D), cut:

- (4) 2" x WOF strips. Sew the strips together end to end with diagonal seams and cut (2) 2" x 79 1/2" strips.
- (4) 2" x WOF strips. Sew the strips together end to end with diagonal seams and cut (2) 2" x 63 1/2" strips.
- (9) 1 1/2" x WOF strips. Sub-cut (78) 1 1/2" x 4 1/2" strips.

#### From the Train Stubs - Black (E), cut:

- (1) 4 1/2" x WOF strip. Sub-cut (4) 4 1/2" squares.

#### From the Train Blocks - Black (F):

- Fussy cut (6) 14 1/2" x 11" rectangles, each centered on a train scene.

#### From the Suitcases - Brown (G), cut:

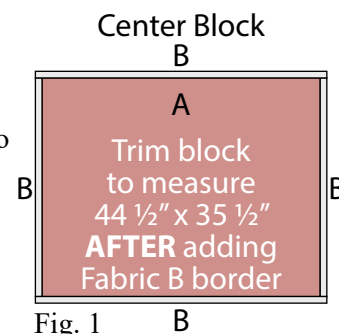
- (2) 5 1/2" x 82 1/2" Length of Fabric (LOF) strips.
- From the remaining fabric cut (2) 5 1/2" x 73 1/2" WOF strips, piece as needed.

#### From the Tossed Trains - Gray (Backing), cut:

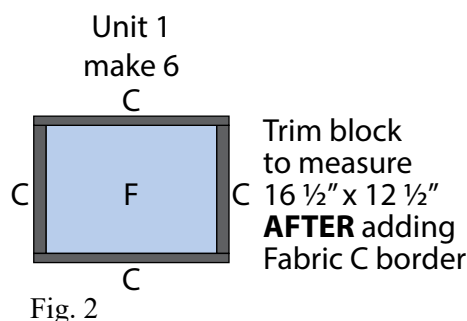
- (2) 100" x WOF strips for the backing. Sew the strips together and trim to make the 81" x 100" back.

### Block Assembly

- Sew (1) 2" x 33 1/2" Fabric B strip to each side of the 42 1/2" x 33 1/2" Fabric A panel. Sew (1) 2" x 45 1/2" Fabric B strip to the top and to the bottom of the Fabric A panel. **Trim the block to measure 44 1/2" x 35 1/2" to make the Center Block** (Fig. 1).



- Sew (1) 2" x 11" Fabric C strip to each side of (1) 14 1/2" x 11" Fabric F strip. Sew (1) 2" x 17 1/2" Fabric C strip to the top and to the bottom of the Fabric F strip. Trim the block to measure 16 1/2" x 12 1/2" to make (1) Unit 1 rectangle (Fig. 2). Repeat to make (6) Unit 1 rectangles total.



- Sew (4) 3 1/2" x 12 1/2" Fabric B strips and (3) Unit 1 rectangles together, alternating them. Sew (1) 3 1/2" x 60 1/2" Fabric B strip to the top and to the bottom of the newly sewn strip to make (1) Block One strip (Fig. 3). Repeat to make a second Block One strip.

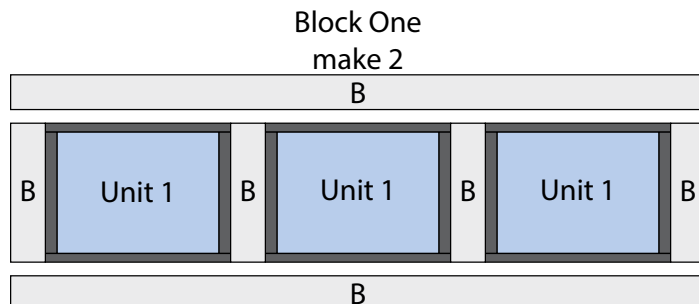


Fig. 3

4. Sew (1) 1 ½" x WOF Fabric C strip to each side of (1) 2 ½" x WOF Fabric B strip lengthwise to make (1) Strip Set 1 (Fig. 4). Repeat to make (3) Strip Set 1's total.

5. Cut the (3) Strip Set 1's into (80) 1 ¼" x 4 ½" Unit 2 strips (Fig. 5).

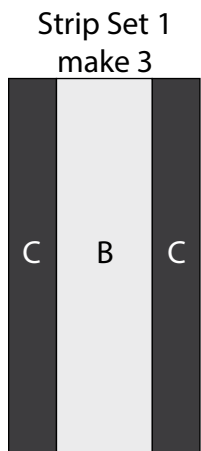


Fig. 4

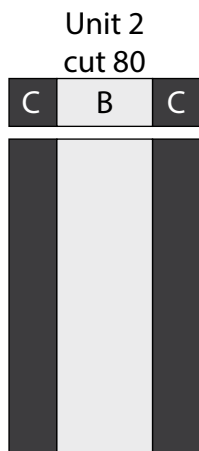


Fig. 5

6. Sew (1) Unit 2 strip to the top of (1) 1 ½" x 4 ½" Fabric D strip to make (1) Unit 3 strip (Fig. 6). Repeat to make (78) Unit 3 strips total.

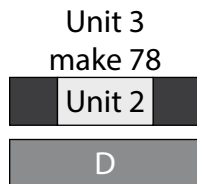


Fig. 6

7. Sew (17) Unit 3 strips together lengthwise. Sew (1) Unit 2 strip to the bottom of the newly sewn strip to make (1) Side Border (Fig. 7). Repeat to make a second Side Border.

8. Sew (22) Unit 3 strips together lengthwise. Sew (1) 4 ½" Fabric E square to each end of the newly sewn strip to make the Top Border (Fig. 8 below). Repeat to make the Bottom Border.

Side Border  
make 2

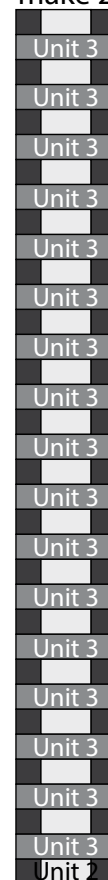


Fig. 7

### Quilt Top Assembly

*(Follow the Quilt Layout while assembling the quilt top. The arrows in the Quilt Layout represent the fabric print direction.)*

9. Sew (1) Side Border to each side of the Center Block. Sew the Top Border and Bottom Border to the top and to the bottom of the Center Block.

10. Sew (1) 4 ½" x 43 ½" Fabric B strip to each side of the Center Block.

11. Sew (1) Block One strip to the top and to the bottom of the Center Block.

Top/Bottom Border  
make 2



Fig. 8

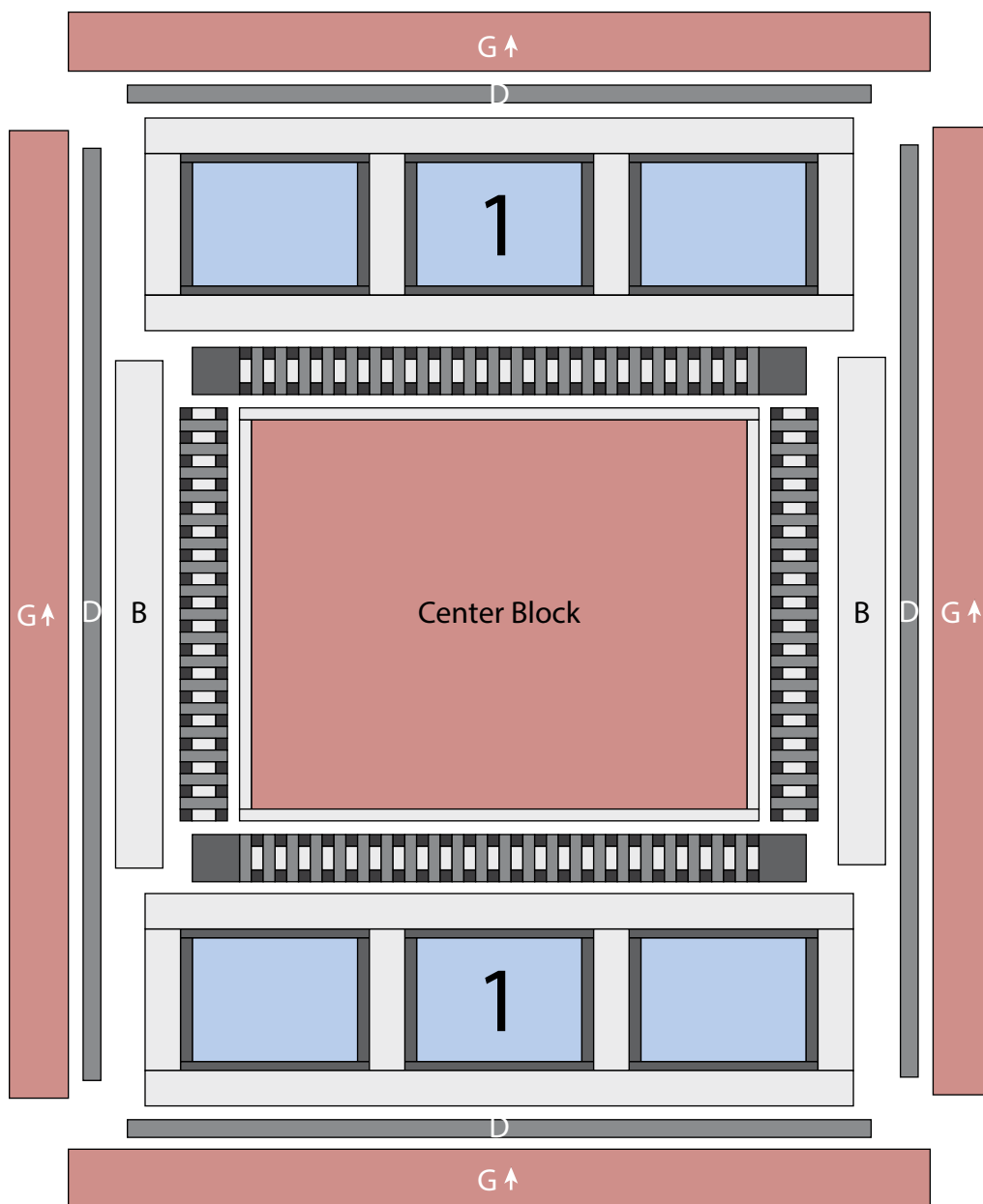
12. Sew (1) 2" x 79 1/2" Fabric D strip to each side of the Center Block. Sew (1) 2" x 63 1/2" Fabric D strip to the top and to the bottom of the Center Block.

13. Sew (1) 5 1/2" x 82 1/2" Fabric G strip to each side of the Center Block. Sew (1) 5 1/2" x 73 1/2" Fabric G strip to the top and to the bottom of the Center Block to make the quilt top.

14. Layer and quilt as desired.

15. Sew the (9) 2 1/2" x WOF Fabric C strips together, end to end with 45-degree seams, to make the binding. Fold this long strip in half lengthwise with wrong sides together and press.

16. Bind as desired.



Quilt Layout

Every effort has been made to ensure that all projects are error free. All the information is presented in good faith, however no warranty can be given nor results guaranteed as we have no control over the execution of instructions. Therefore, we assume no responsibility for the use of this information or damages that may occur as a result. When errors are brought to our attention, we make every effort to correct and post a revision as soon as possible. Please make sure to check [www.blankquilting.net](http://www.blankquilting.net) for pattern updates prior to starting the project. We also recommend that you test the project prior to cutting for kits. Finally, all free projects are intended to remain free to you and are **not for resale**.