

# DEWDROP

designed by Whistler Studios

featuring the Dewdrop fabric collection by Whistler Studios

QUILT SIZE: 34" x 40"

FREE  
PROJECT



THIS IS A DIGITAL REPRESENTATION OF THE QUILT TOP, FABRIC MAY VARY.

**PLEASE NOTE:** BEFORE MAKING YOUR PROJECT, CHECK FOR ANY PATTERN UPDATES AT [WINDHAMFABRICS.COM](http://WINDHAMFABRICS.COM)'S FREE PROJECTS SECTION.



# Dewdrop

KEY	FABRIC	SKU	YD	CUTTING INSTRUCTIONS
A		52495M-20 pebble	1-1/8	<ul style="list-style-type: none"><li>• (1) 34-1/2" x 40-1/2" Width of Fabric (WOF) strip.</li></ul>
B		52495M-23 zebra	3/8	<ul style="list-style-type: none"><li>• (4) 2-1/2" x WOF strips for the binding.</li></ul>
C		52495M-15 night sky	Fat 1/8	<ul style="list-style-type: none"><li>• See instructions to cut (1) Template 45, (1) Template 46 and (1) Template 47.</li></ul>
D		52495M-25 earth	Fat 1/8	<ul style="list-style-type: none"><li>• See instructions to cut (1) Template 42, (1) Template 43 and (1) Template 44.</li></ul>
E		52495M-12 emerald	Fat 1/8	<ul style="list-style-type: none"><li>• See instructions to cut (1) Template 40 and (1) Template 41.</li></ul>
F		52495M-13 forest	Fat 1/8	<ul style="list-style-type: none"><li>• See instructions to cut (1) Template 35, (1) Template 36, (1) Template 37, (1) Template 38 and (1) Template 39.</li></ul>
G		52495M-24 universe	Fat 1/8	<ul style="list-style-type: none"><li>• See instructions to cut (1) Template 29, (1) Template 30 and (1) Template 31.</li></ul>
H		52495M-4 rosa	Fat 1/8	<ul style="list-style-type: none"><li>• See instructions to cut (1) Template 21 and (1) Template 22.</li></ul>
I		52495M-16 grape soda	Fat 1/8	<ul style="list-style-type: none"><li>• See instructions to cut (1) Template 25 and (1) Template 26.</li></ul>
J		52495M-10 grass	Fat 1/8	<ul style="list-style-type: none"><li>• See instructions to cut (1) Template 32, (1) Template 33 and (1) Template 34.</li></ul>
K		52495M-26 citrus	Fat 1/8	<ul style="list-style-type: none"><li>• See instructions to cut (1) Template 27 and (1) Template 28.</li></ul>
L		52495M-9 sunbeam	Fat 1/8	<ul style="list-style-type: none"><li>• See instructions to cut (1) Template 23 and (1) Template 24.</li></ul>
M		52495M-28 wonderland	Fat 1/8	<ul style="list-style-type: none"><li>• See instructions to cut (1) Template 18, (1) Template 19 and (1) Template 20.</li></ul>

Project Disclaimer: Every effort has been made to ensure that all projects are error free. All the information is presented in good faith, however, no warranty can be given nor results guaranteed. Therefore, we assume no responsibility nor damages that may occur when referring to this pattern. When errors are brought to our attention, we make every effort to correct and post a revision as soon as possible. We suggest you check ([windhamfabrics.net](http://windhamfabrics.net)) for pattern updates and to test the pattern prior to making the project. Test templates first, before cutting all the pieces. Free projects are not for resale.



# Dewdrop

KEY	FABRIC	SKU	YD	CUTTING INSTRUCTIONS
N		52495M-7 mandarin	Fat 1/8	• See instructions to cut (1) Template 16 and (1) Template 17.
O		52495M-8 gold	Fat 1/8	• See instructions to cut (1) Template 15.
P		52495M-5 bubblegum	Fat 1/8	• See instructions to cut (1) Template 13 and (1) Template 14.
Q		52495M-27 fire	Fat 1/8	• See instructions to cut (1) Template 10, (1) Template 11 and (1) Template 12.
R		52495M-3 lip gloss	Fat 1/8	• See instructions to cut (1) Template 7, (1) Template 8 and (1) Template 9.
S		52495M-2 kiss	Fat 1/8	• See instructions to cut (1) Template 4, (1) Template 5 and (1) Template 6.
T		52495M-1 cherry	Fat 1/8	• See instructions to cut (1) Template 1, (1) Template 2 and (1) Template 3.
		Backing 52495M-20 pebble	2-1/2	• (2) 42" x WOF strips. Sew the strips together and trim to 42" x 48" for the pieced back.
				Batting 42" x 48"



# Dewdrop

## Quilt Top Assembly

*Refer to the Quilt Diagram while assembling the quilt top.*

**Note: The arrows in the figures represent the fabric print direction. Pay attention to the fabric and shape orientations while assembling the quilt top.**

1. Following the manufacturer's instructions, trace (1) of each template onto the paper side of the fusible web. Roughly cut out each template about 1/8" outside the drawn lines.
2. Press each template onto the wrong side of the fabrics as listed on the templates. Cut out each template on the drawn lines.
3. Refer to the Quilt Layout to arrange and press the (47) assorted dewdrops onto the **A** 34-1/2" x 40-1/2" strip.
4. Finish the raw edges of each shape with a decorative stitch such as a buttonhole or satin stitch to make the quilt top.

## Finishing

5. Layer and quilt as desired.
6. Sew the (4) **B** 2-1/2" x WOF strips together end-to-end with 45-degree seams to make the binding. Fold this long strip in half lengthwise with wrong sides together and press.
7. Bind as desired.

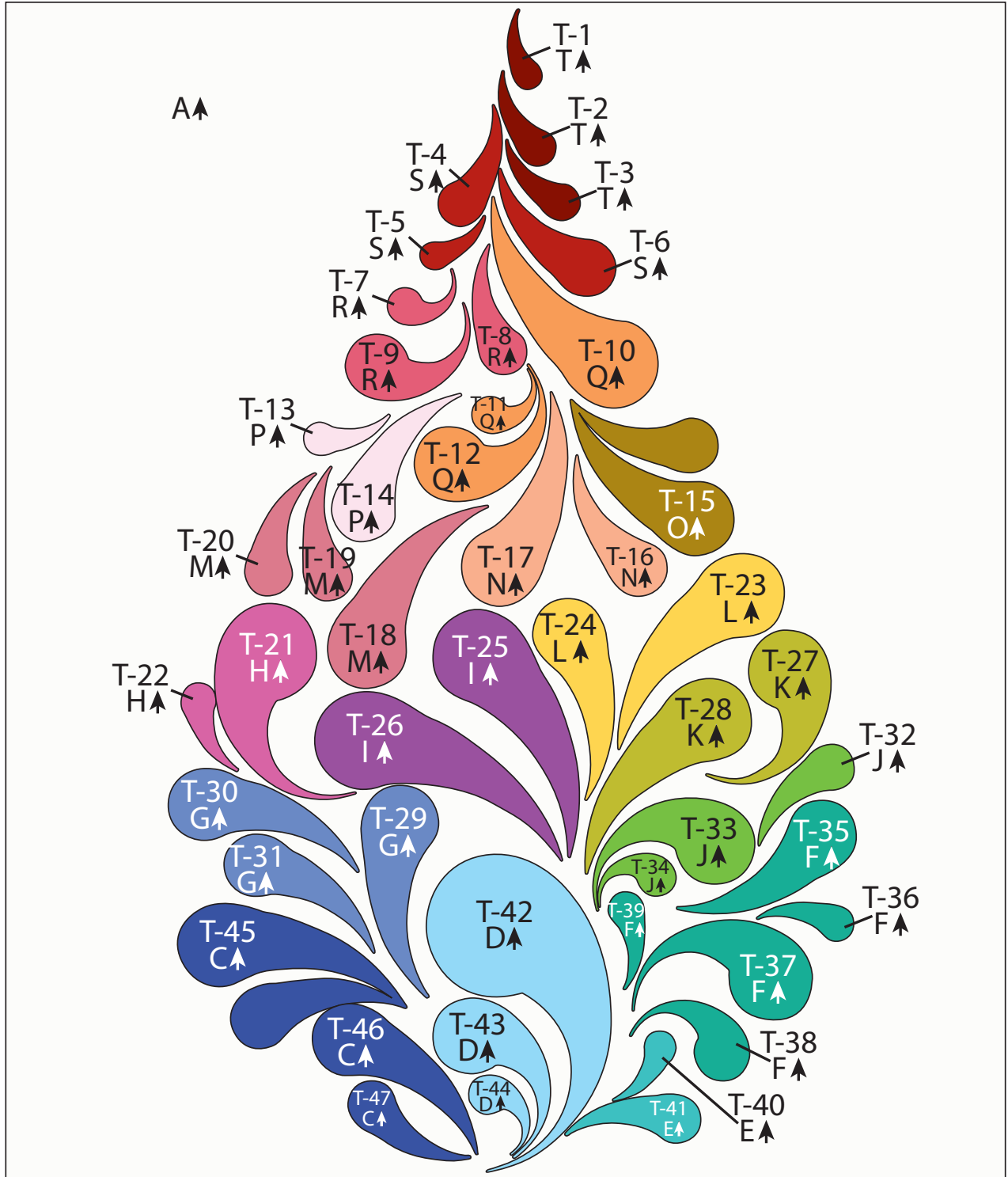




# Dewdrop

SIZE: 34" X 40"

## Quilt Diagram

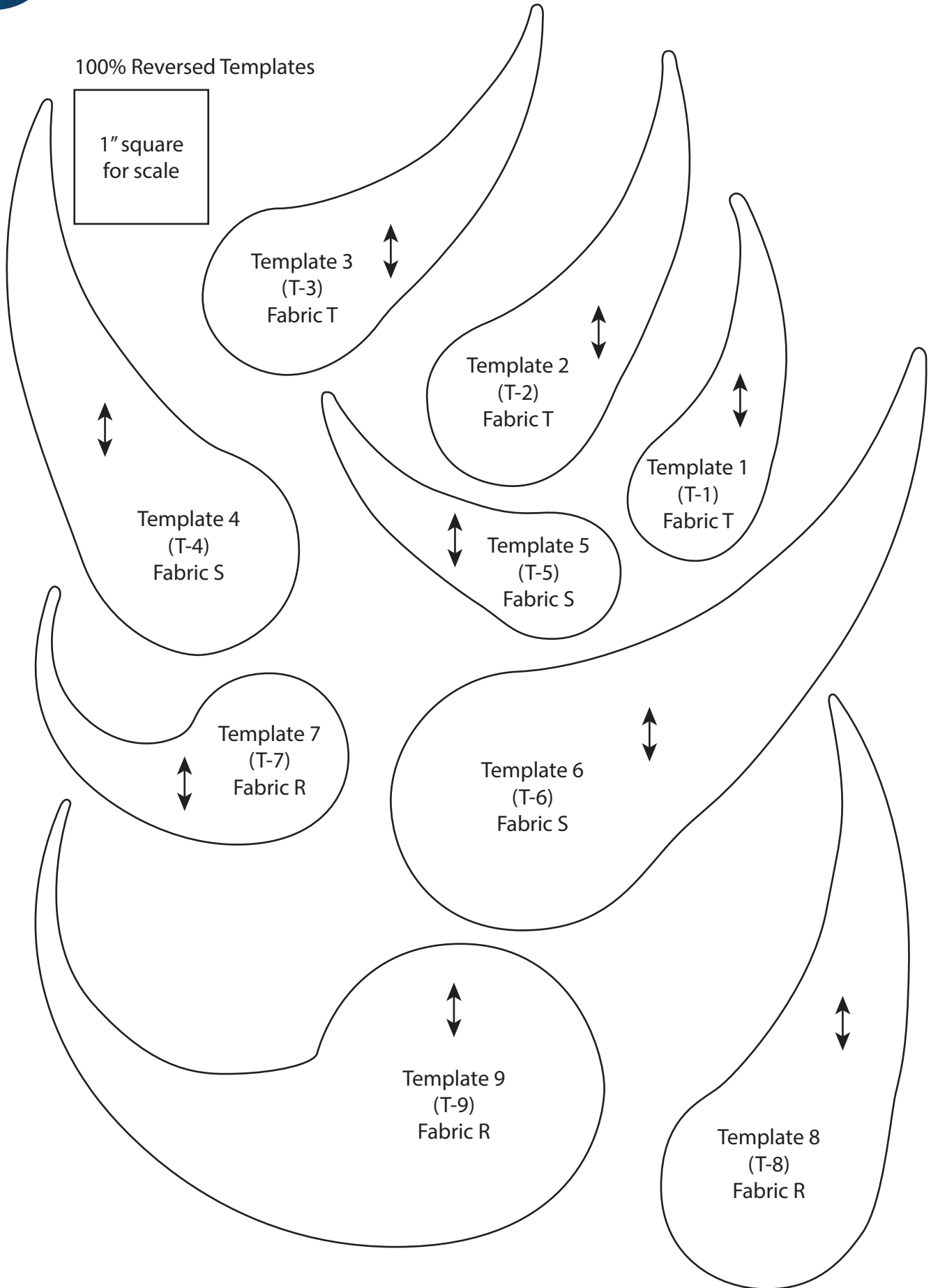
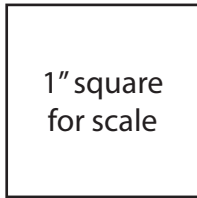




### Templates

# Dewdrop

100% Reversed Templates

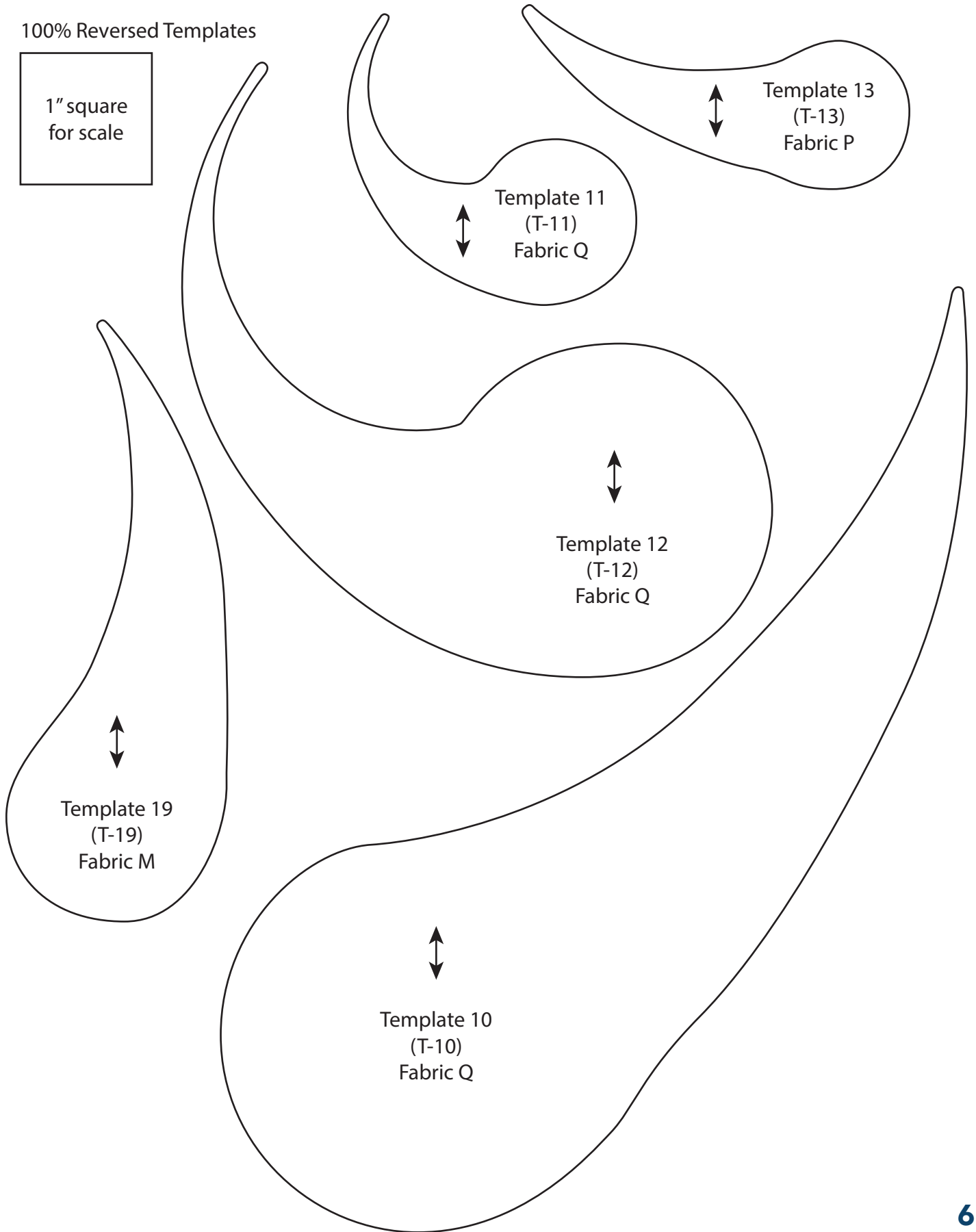




Templates

# Dewdrop

100% Reversed Templates

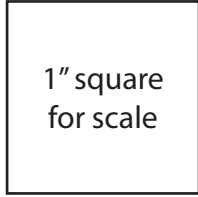




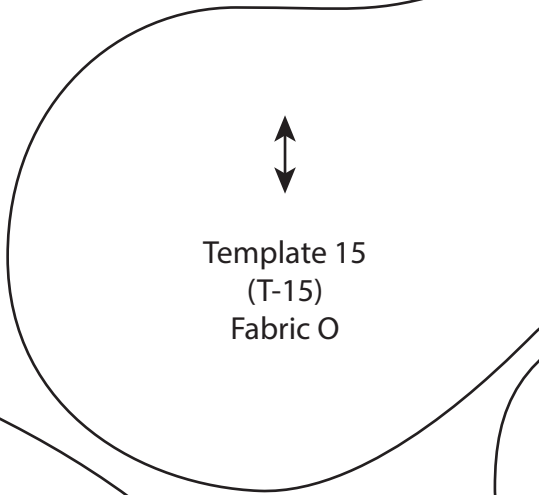
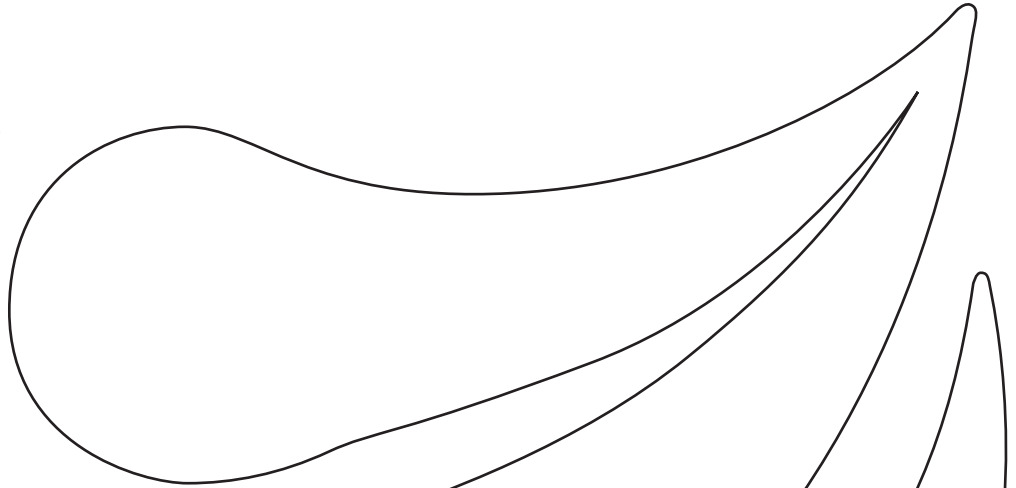
Templates

# Dewdrop

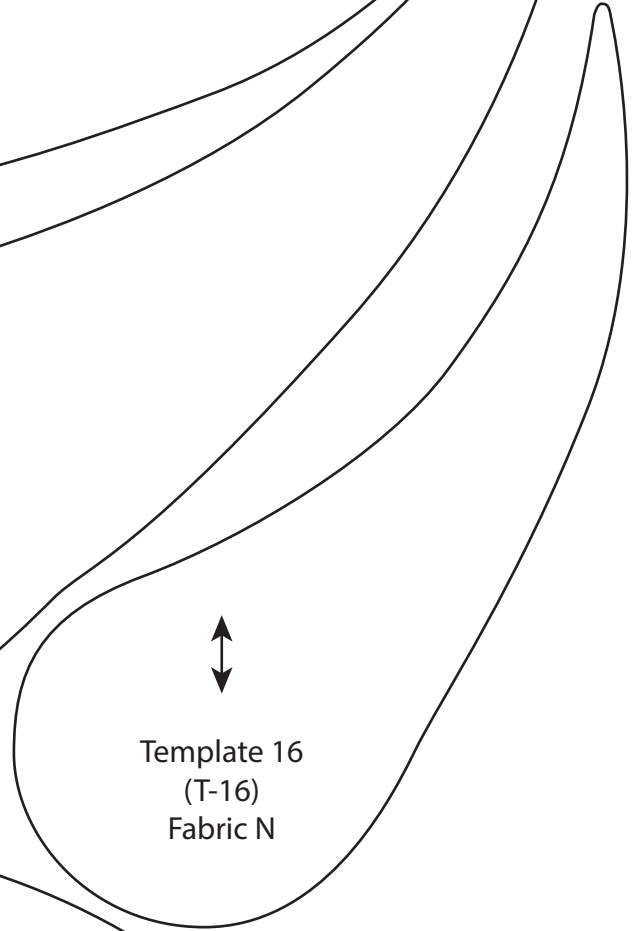
100% Reversed Templates



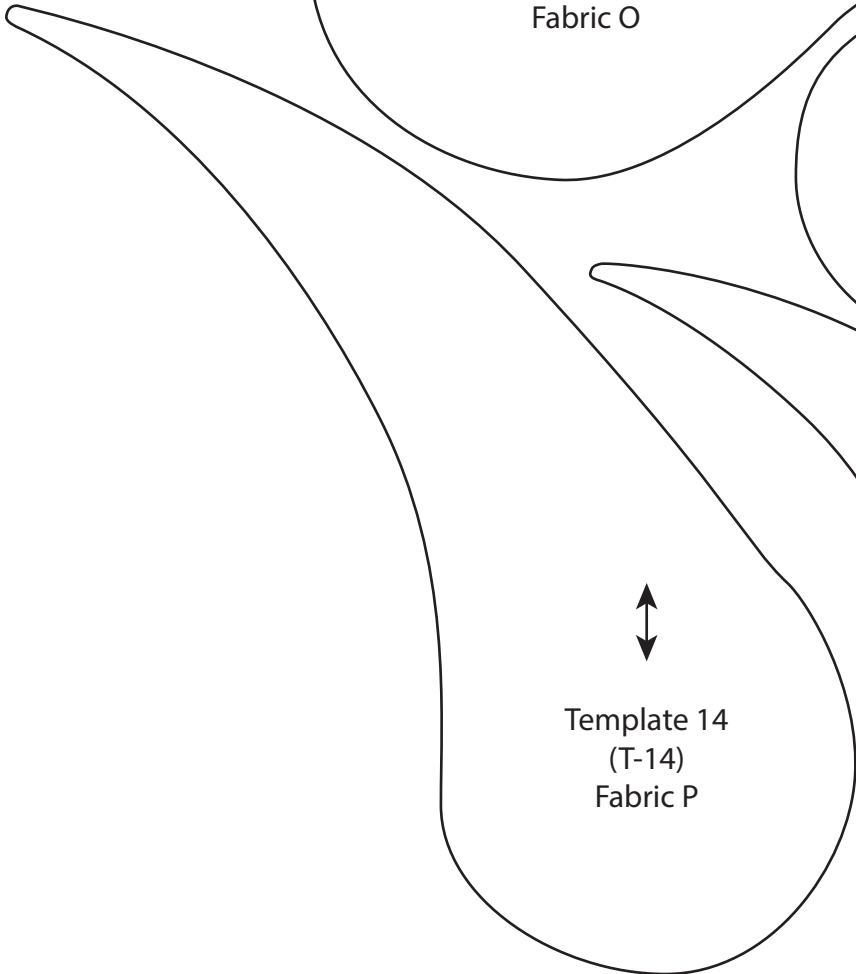
1" square  
for scale



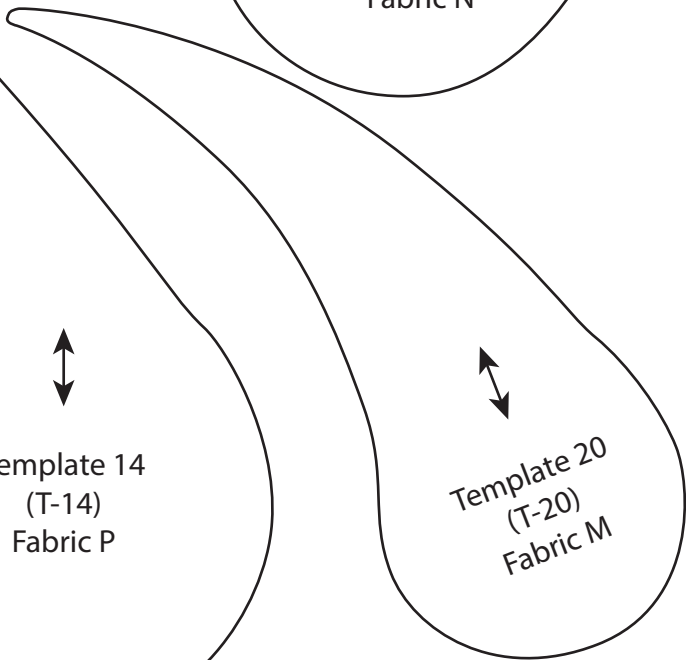
Template 15  
(T-15)  
Fabric O



Template 16  
(T-16)  
Fabric N



Template 14  
(T-14)  
Fabric P



Template 20  
(T-20)  
Fabric M

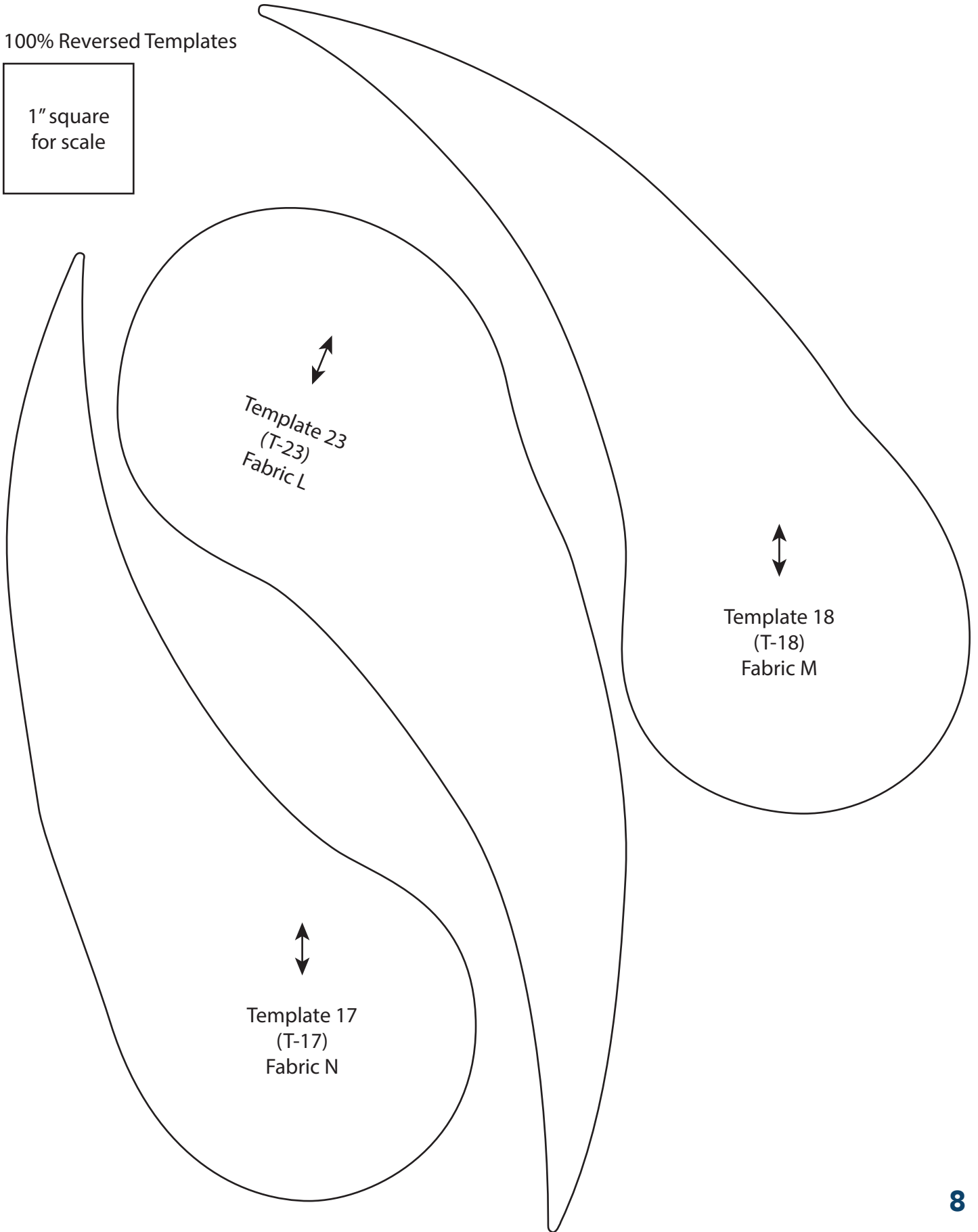




Templates

# Dewdrop

100% Reversed Templates





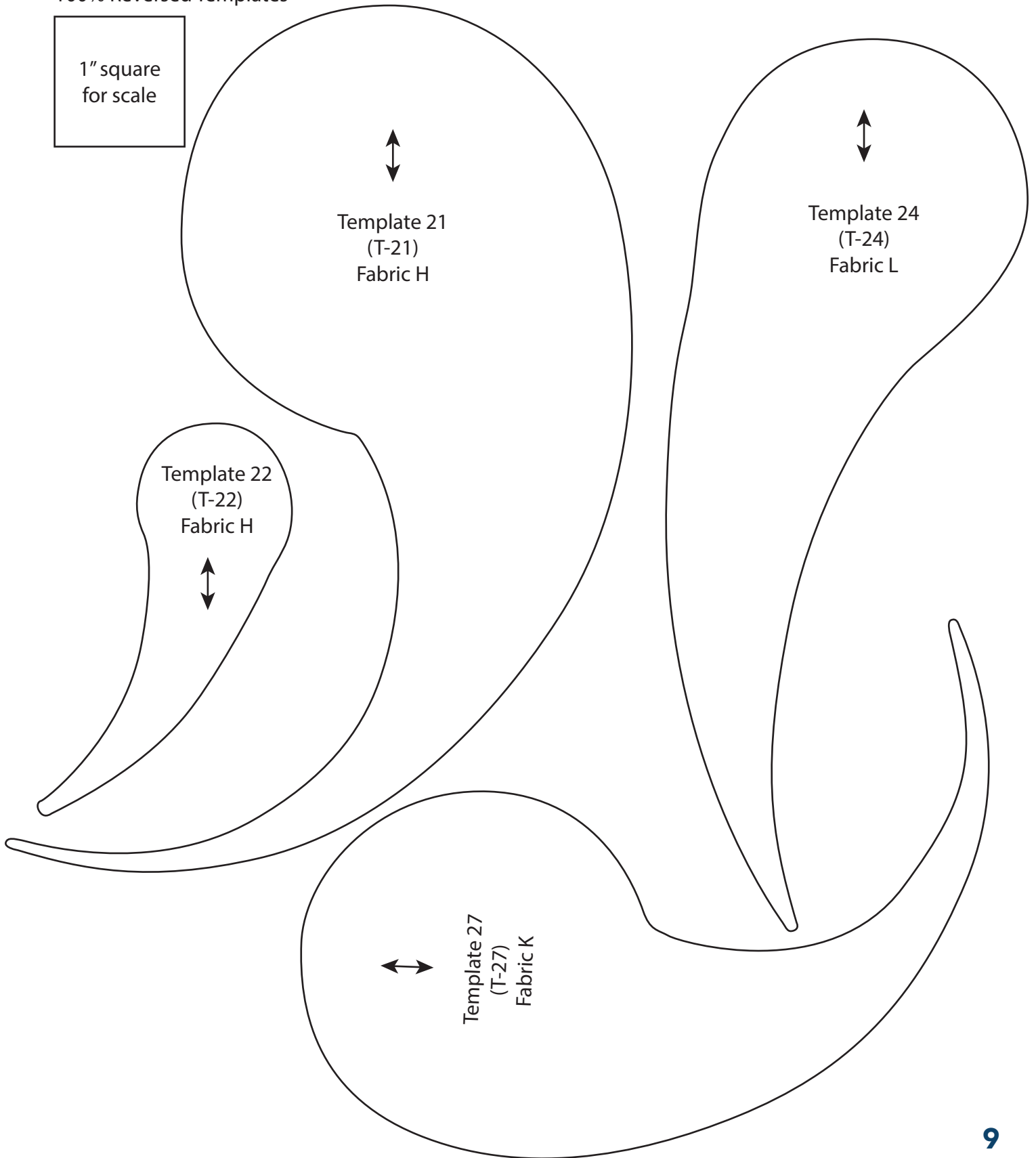
Templates

# Dewdrop

100% Reversed Templates



1" square  
for scale



Template 21  
(T-21)  
Fabric H

Template 24  
(T-24)  
Fabric L

Template 22  
(T-22)  
Fabric H

Template 27  
(T-27)  
Fabric K



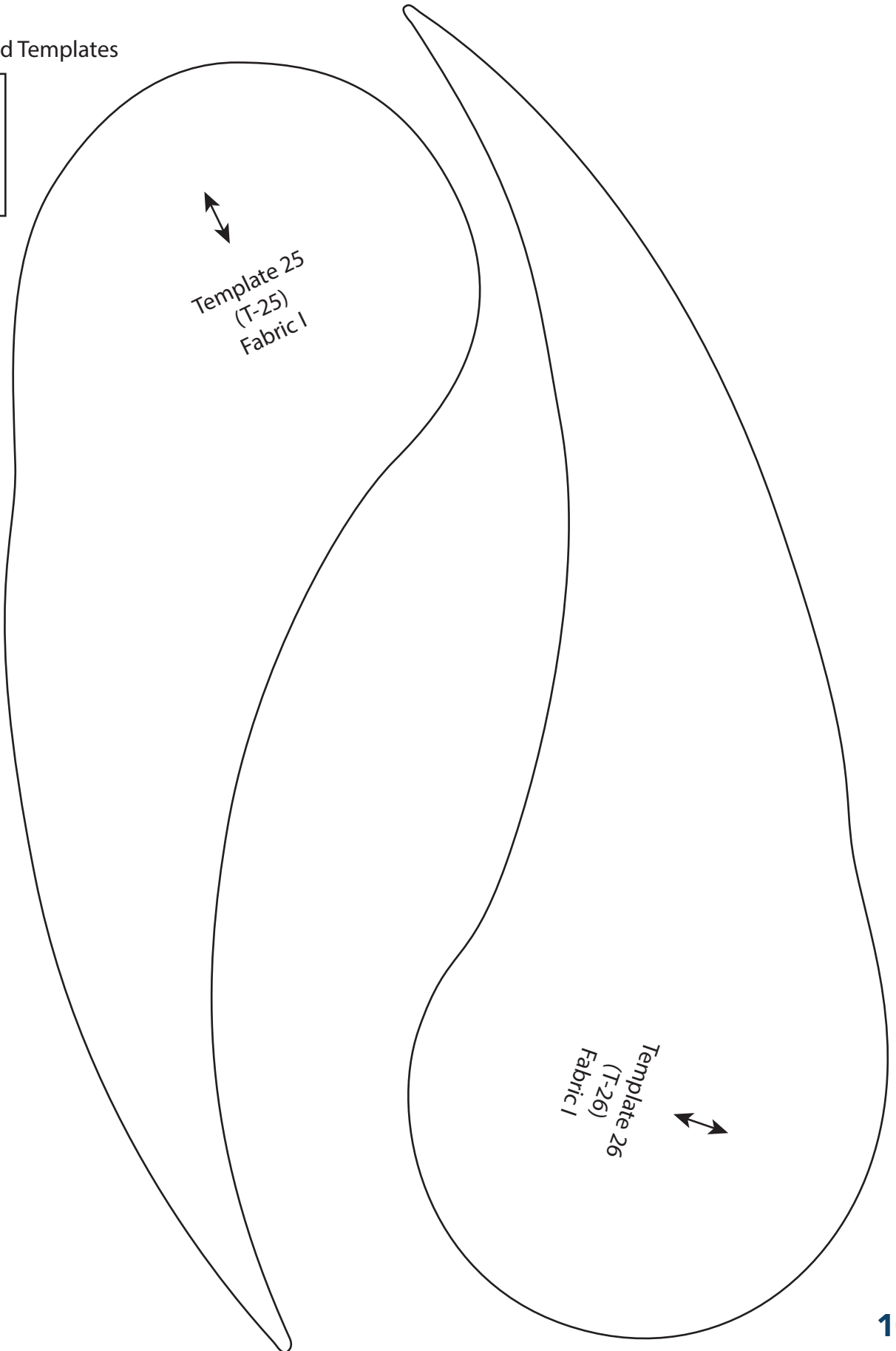
Templates

# Dewdrop

100% Reversed Templates



1" square  
for scale



Template 25  
(T-25)  
Fabric 1

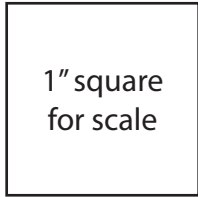
Template 26  
(T-26)  
Fabric 1



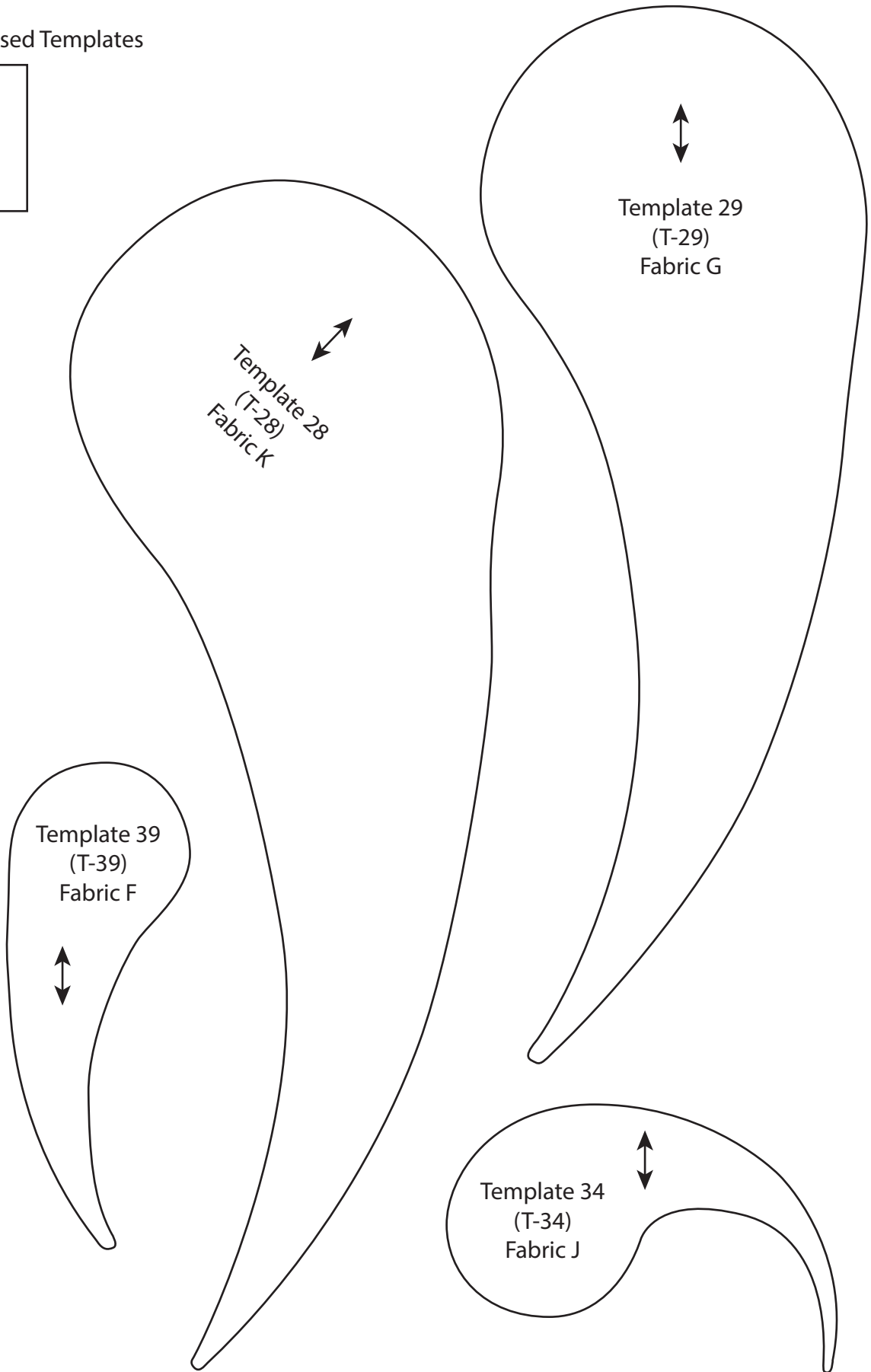
Templates

# Dewdrop

100% Reversed Templates



1" square  
for scale



Template 28  
(T-28)  
Fabric K

Template 29  
(T-29)  
Fabric G

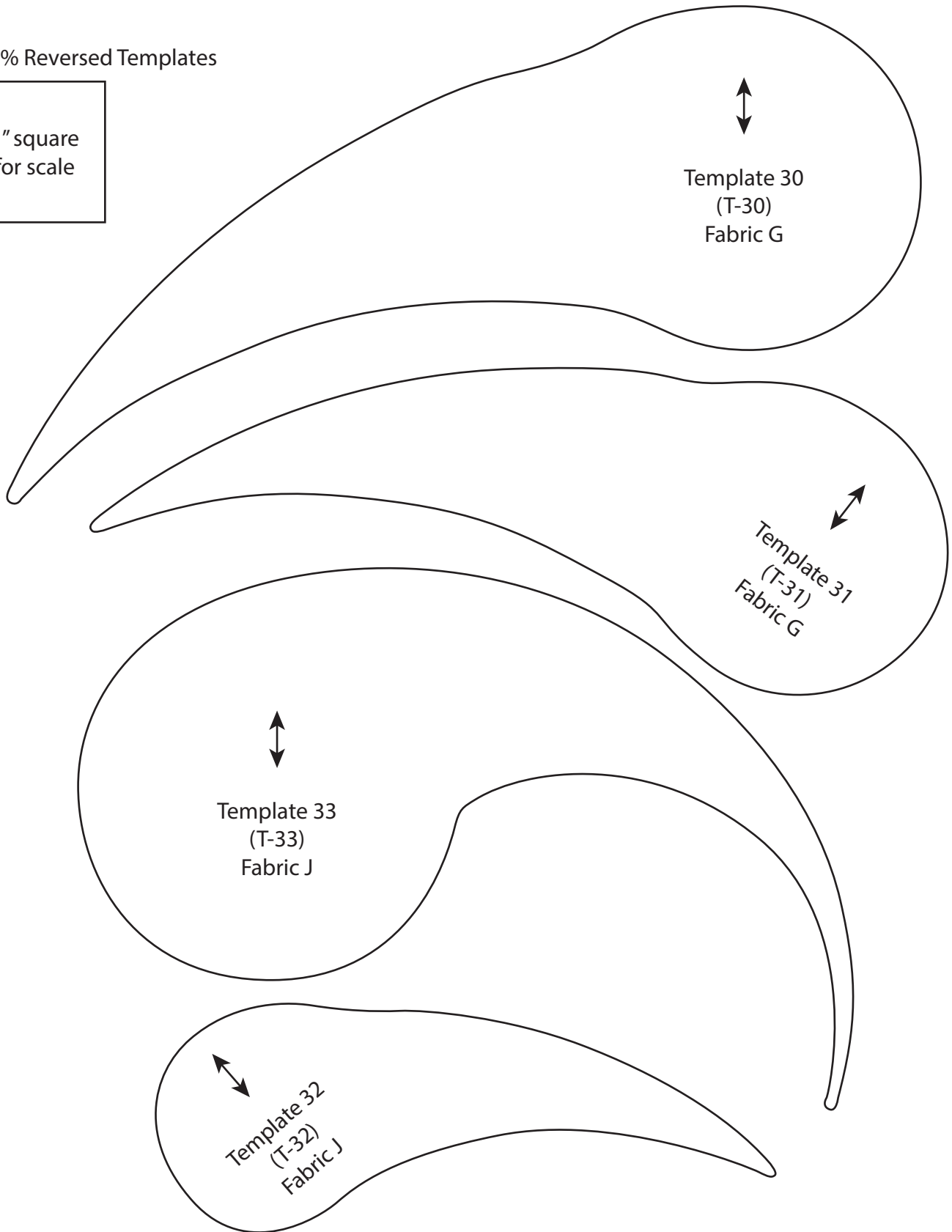
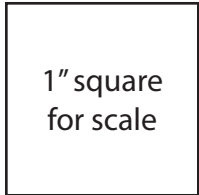
Template 39  
(T-39)  
Fabric F

Template 34  
(T-34)  
Fabric J



# Dewdrop

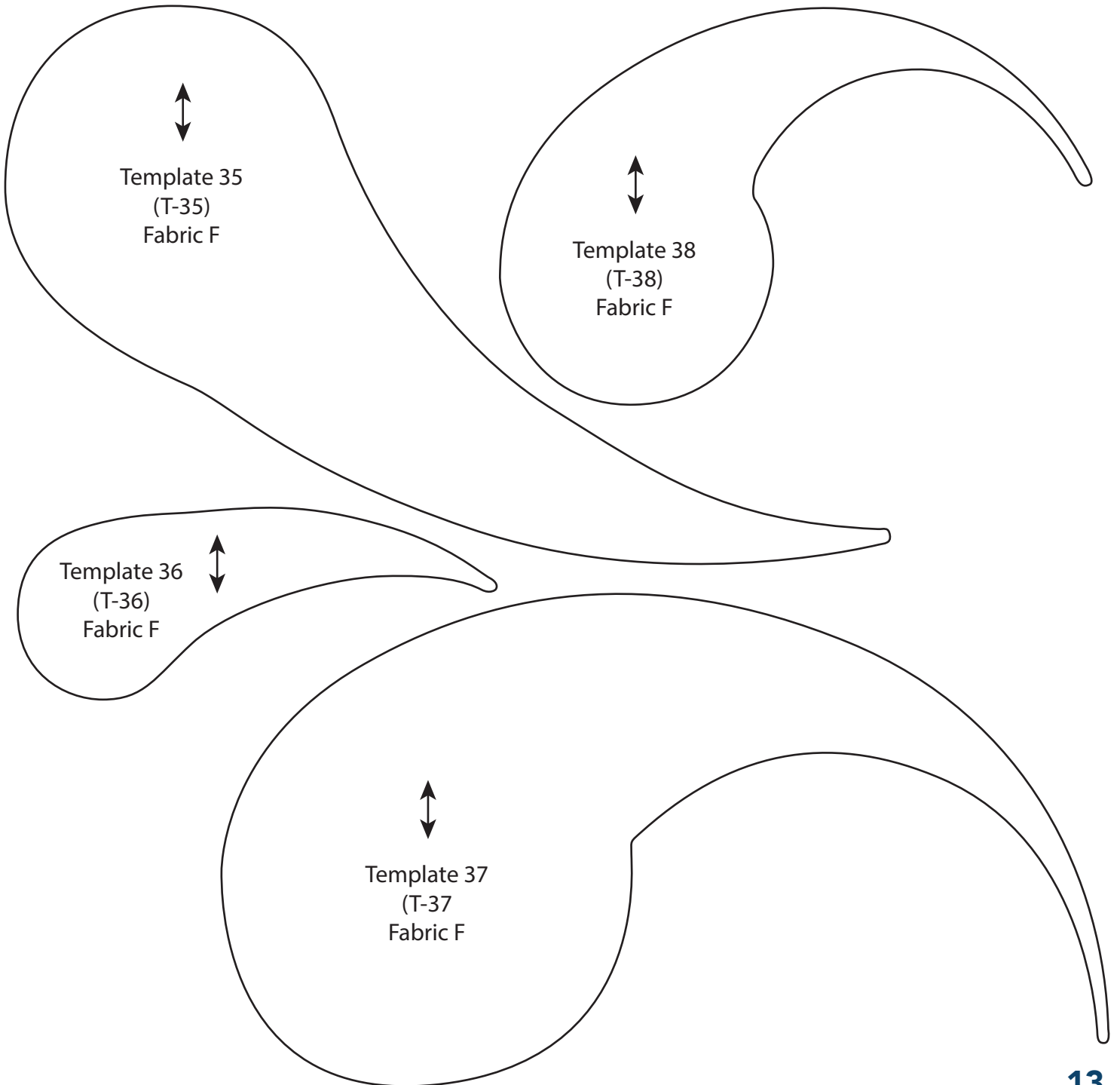
100% Reversed Templates





# Dewdrop

100% Reversed Templates







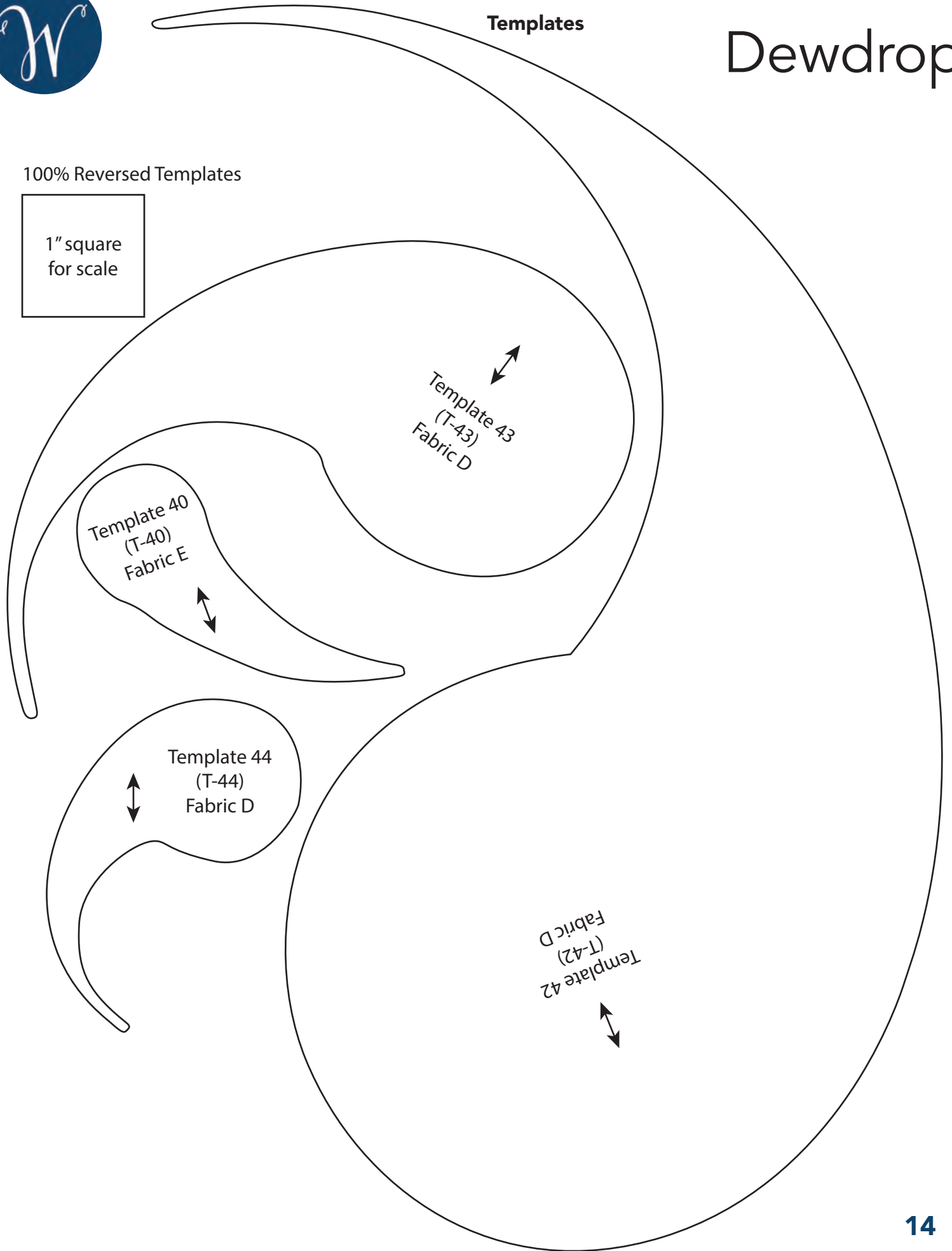
Templates

# Dewdrop

100% Reversed Templates



1" square  
for scale





Templates

# Dewdrop

100% Reversed Templates



1" square  
for scale

