

3041

# Bohemian Blue By Lisa Audit



**WILMINGTON**  
*Prints*

[www.wilmingtonprints.com](http://www.wilmingtonprints.com)

**Twin Quilt: 61 1/2" x 82 1/2"**

Wilmington *Prints*: A World of Possibilities

# Bohemian Blue

Please read all instructions carefully AND identify all fabrics before beginning.

All instructions include a 1/4" seam allowance and strips are cut selvage to selvage, unless stated otherwise.

## 1. Cut the following:


*If using FAT CUTS, you may need to cut additional width-of-fabric strips.*

**Fabric A** - PLEASE NOTE: Panels do not always print the size intended. For this pattern, the panel has a coping border added then trimmed so the panel will fit the quilt correctly.

Fussy cut 1/4" beyond outside edges of panel to approximately 23-1/2" x 42"


**Fabric B** - Referring to the quilt image, fussy cut strips, the length of fabric parallel to selvage: (2) 8-3/4" x 80" and (2) 8-3/4" x 60" multi-stripe borders


**Fabric C** - Cut (2) 2-3/4" strips, subcut (2) 2-3/4" x 27" strips  
Cut (2) 2" strips


**Fabric D** - Cut (1) 5-7/8" strip, subcut (4) 5-7/8" squares then cut in half diagonally  for 8 triangles


**Fabric E** - Fussy (8) 4" squares with motifs centered

**Fabric F** - Cut (7) 4" strips, sewn together end to end and cut into (2) 4" x 76" and (2) 4" x 63" borders

**Fabric G** - Cut (1) 5-7/8" strip, subcut (2) 5-7/8" squares and (8) 3" squares  
Cut (1) 3-3/8" strip, subcut (4) 3-3/8" squares then cut in half diagonally for  8 triangles

**Fabric H** - Cut (2) 5-7/8" strips, subcut (8) 5-7/8" squares then cut in half diagonally for  16 triangles

**Fabric I** - Cut (1) 5-7/8" strip, subcut (2) 5-7/8" squares and (8) 3" squares  
Cut (1) 3-3/8" strip, subcut (6) 3-3/8" squares then cut in half diagonally for  12 triangles

**Fabric J** - Cut (1) 5-7/8" strip, subcut (4) 5-7/8" squares and (2) 3-3/8" squares [then  cut in half diagonally for 4 triangles]

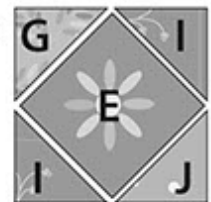
**Fabric K** - Cut (8) 2-1/2" strips (binding)  
Cut (3) 1-1/2" strips, sewn together end to end and cut into (2) 1-1/2" x 59-1/2" strips  
Cut (2) 1-1/2" strips, subcut (2) 1-1/2" x 39-1/2" strips

**Fabric L** - Cut (1) 5-7/8" strip, subcut (4) 5-7/8" squares and (2) 3-3/8" squares [then cut in half diagonally for 4 triangles]  
Cut (1) 3" strip, subcut (4) 3" squares

**Fabric M** - Cut (1) 3-3/8" strip, subcut (2) 3-3/8" squares [then cut in half diagonally for 4 triangles] and (4) 3" squares  
Cut (3) 2-1/2" strips, sewn together end to end and cut into (2) 2-1/2" x 55-1/2" strips  
Cut (2) 2-1/2" strips, subcut (2) 2-1/2" x 39-1/2" strips

## 2. Piecing Order:

1. Stitch **Fabric I** 3-3/8" triangles to opposite sides of a **Fabric E** 4" square. Add **Fabrics G** and **J** 3-3/8" triangles to remaining sides. Make a total of 4 **Block 1** (5-1/2" square unfinished).

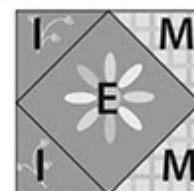


Block 1 - Make 4

2. In the same manner, make 2 each **Blocks 2** and 3 with the fabrics indicated.



Block 2 - Make 2



Block 3 - Make 2

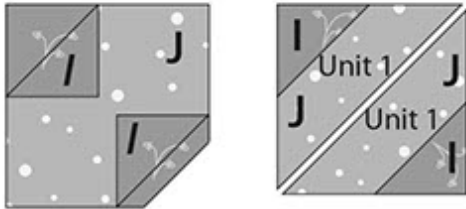
3. Draw a diagonal line across the wrong side of all **Fabrics G, I, L,** and **M** 3" squares.



*Letters in italics indicate wrong side of fabric.*

# Bohemian Blue

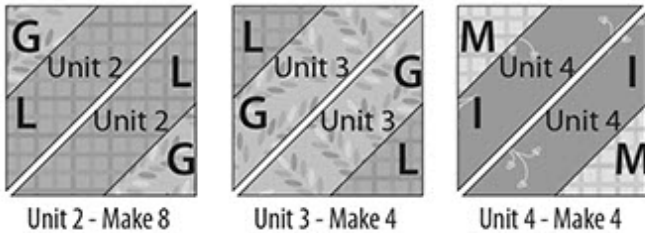
4. Arrange 2 marked **Fabric I** 3" squares on opposite corners of a **Fabric J** 5-7/8" square. Stitch along marked lines. Trim seam allowances to 1/4". Press triangles out. Cut a diagonal line through the **Fabric J** square as shown to create 2 Unit 1 (5-7/8" x 5-7/8" x 8-3/8" unfinished). Repeat 4 times to make a total of 8 Unit 1.



Repeat 4 times to make 8 Unit 1

*Letters in italics indicate wrong side of fabric.*

5. In the same manner, make 8 Unit 2 and 4 each Units 3 and 4 with fabrics indicated.

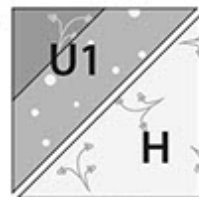


Unit 2 - Make 8

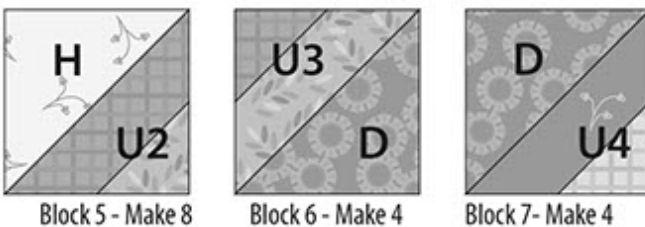
Unit 3 - Make 4

Unit 4 - Make 4

6. Sew a **Fabric H** 5-7/8" triangle and Unit 1 together along their long edges. Make a total of 8 **Block 4** (5-1/2" square unfinished). In the same manner, make 8 **Block 5** and 4 each **Blocks 6** and **7** with fabrics and units indicated.



Block 4 - Make 8



Block 5 - Make 8

Block 6 - Make 4

Block 7 - Make 4

7. Refer to Quilt Layout (Page 4) for arrangement and placement of panel, strips, blocks, and borders.

8. Stitch **Fabric C** 2" x width of fabric strips to sides of the **Fabric A** panel. Trim strip ends even. Add 2-3/4" x 27" **Fabric C** strips to top and bottom of panel. *Trim bordered panel to 25-1/2" x 45-1/2" (unfinished).*

9. Arrange 1 **Block 3** and 2 each **Blocks 4-7** in vertical rows on right and left sides of bordered panel. Stitch into side borders (5-1/2" x 45-1/2" unfinished). Sew to right and left sides of bordered panel.

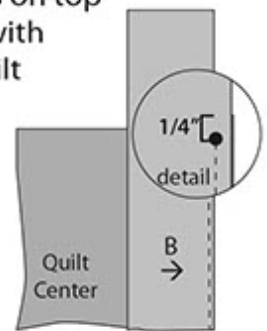
10. Arrange 1 **Block 2** and 2 each **Blocks 1, 4, and 5** in horizontal rows above and below bordered panel. Stitch into top and bottom borders (5-1/2" x 35-1/2" unfinished). Sew to top and bottom of bordered panel.

11. Sew **Fabric M** 2-1/2" x 55-1/2" borders to right and left sides of quilt. Add **Fabric M** 2-1/2" x 39-1/2" borders to top and bottom of quilt.

12. Fold and press **Fabric K** 1-1/2" x 59-1/2" and 1-1/2" x 39-1/2" strips in half lengthwise, right side out, forming 3/4" wide flat piping strips.

13. Baste 3/4" x 59-1/2" **Fabric K** flat piping strips on top of sides of quilt, with raw edges even with raw edges of **Fabric M** border. Baste 3/4" x 39-1/2" **Fabric K** flat piping on top of top and bottom of quilt, with raw edges even with raw edges of **Fabric M** border.

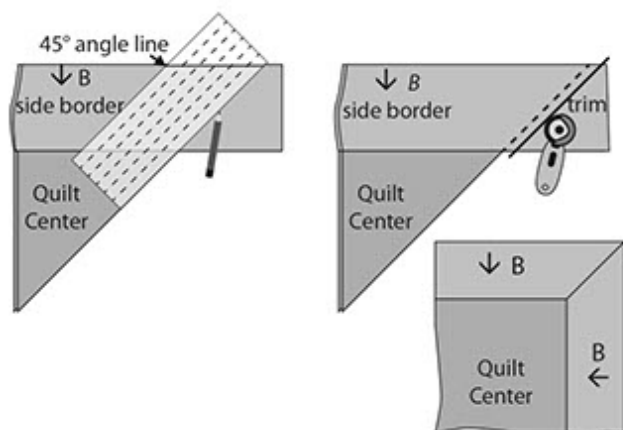
14. Center **Fabric B** 8-3/4" x 80" borders on right and left sides of quilt center and **Fabric B** 8-3/4" x 60" borders on top and bottom of quilt center with the bicycle stripe next to quilt center. Stitch borders to sides starting and stopping 1/4" from corners of quilt center. Do not trim. Press borders out so **Fabric K** flat piping lays on top of **Fabric M** border.



*Letters in italics indicate wrong side of fabric.  
Arrows indicate orientation of directional prints.*

# Bohemian Blue

15. Working with 1 corner at a time, fold the quilt right sides together so the outside edges of the borders line up. Using a 45-degree ruler, mark from the end of border seams to outer edges of borders. Stitch along marked line. Trim seam allowance to 1/4". Press corner seam open. Repeat on remaining corners.



16. Sew **Fabric F** 4" x 76" borders to right and left sides of quilt. Add **Fabric F** 4" x 63" borders to top and bottom of quilt.

17. The quilt measures approximately 63" x 83" (unfinished). Make backing (**Fabric N**) approximately 8" larger than the top.

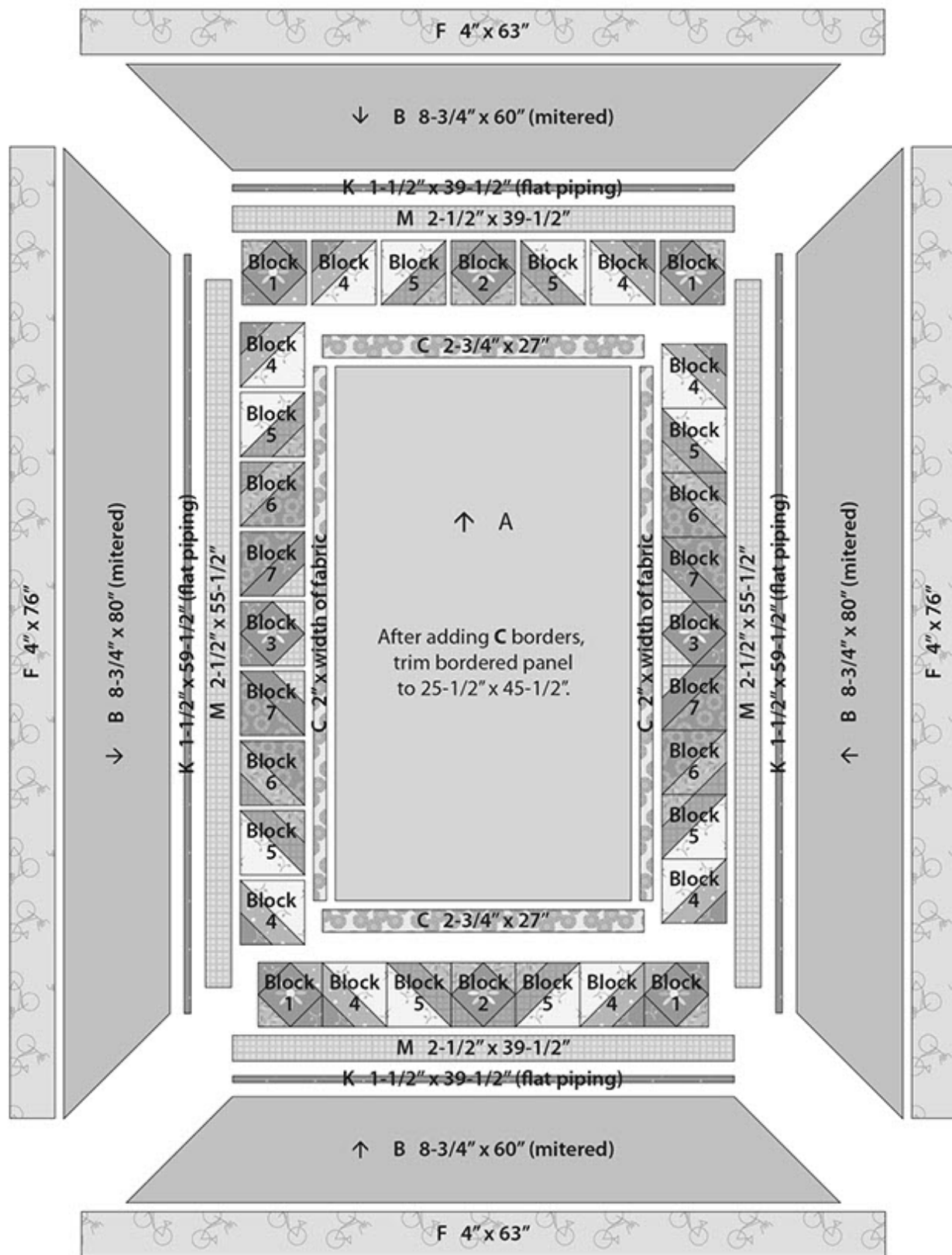
18. Layer and baste top, batting, and backing together. Quilt as desired. Attach binding (**Fabric K**) and enjoy!!

# Bohemian Blue

## QUILT LAYOUT

Border measurements are the cut size.

Arrows indicate orientation of directional prints.





**Fabric A**  
3041-17751-147  
2/3 yard  
(1 Panel)



**Fabric B**  
3041-17752-174  
2 1/2 yards

3041

# Bohemian Blue

By Lisa Audit



**Fabric C**  
3041-17753-174  
3/8 yard



**Fabric D**  
3041-17753-474  
1/4 yard  
(or Fat Quarter)



**Fabric E**  
3041-17754-447  
1/3 yard



**Fabric F**  
3041-17755-424  
1 yard



**Fabric G**  
3041-17757-714  
3/8 yard  
(or Fat Quarter)



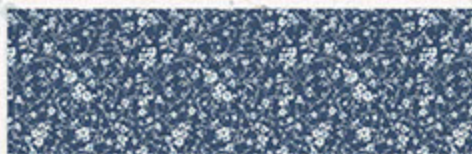
**Fabric H**  
3041-17758-174  
1/2 yard



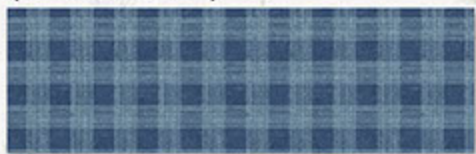
**Fabric I**  
3041-17758-474  
3/8 yard  
(or Fat Quarter)



**Fabric J**  
3041-17759-401  
1/4 yard  
(or Fat Quarter)



**Fabric K**  
3041-17759-441  
1 yard  
(Incl. binding)



**Fabric L**  
3041-17760-444  
3/8 yard  
(or Fat Quarter)



**Fabric M**  
3041-17760-777  
5/8 yard



**Fabric N**  
3041-17757-414  
5 1/4 yards  
(Suggested backing)

**OR**

Quilter's Choice

**Fabric N**  
108" Backing  
2 1/8 yards

