

# HILLSIDE

Designed by Wishwell  
[www.robertkaufman.com](http://www.robertkaufman.com)

Featuring **Silverstone**  
Wishwell  
patterns for daydreamers



Finished quilt measures: 64" x 84"

Quilt shown in "BLACK" colorstory.

For alternate "CREAM" colorstory see pages 10-11.


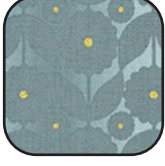
Difficulty Rating: **Advanced**

**ROBERTKAUFMAN**  
F A B R I C S

For questions about this pattern, please email [Patterns@RobertKaufman.com](mailto:Patterns@RobertKaufman.com).




## Fabric and Supplies Needed

*Fabric amounts based on yardage that is 42" wide.*

Color	Fabric	Name/SKU	Yardage	Color	Fabric	Name/SKU	Yardage
	A	WELM-19501-181 ONYX	7/8 yard		J	WELM-19499-181 ONYX	7/8 yard
	B	WELM-19503-181 ONYX	1 yard		K	WELM-19505-155 STONE	1/4 yard
	C	WELM-19502-184 CHARCOAL	7/8 yard		L	WELM-19501-187 PLATINUM	1/4 yard
	D	WELM-19499-185 STEEL	7/8 yard		M	WELM-19502-181 ONYX	1/4 yard
	E	WELM-19504-185 STEEL	7/8 yard		N	WELM-19503-160 TAUPE	1/4 yard
	F	WELM-19505-181 ONYX	1 yard		O	WELM-19505-187 PLATINUM	1/4 yard
	G	WELM-19500-181 ONYX	1 yard		P	WELM-19501-155 STONE	1/4 yard
	H	WELM-19500-185 STEEL	7/8 yard		Q	WELM-19500-160 TAUPE	1/4 yard
	I	WELM-19504-181 ONYX	7/8 yard		R	WELM-19502-185 STEEL	1/4 yard

## Fabric and Supplies Needed

Fabric amounts based on yardage that is 42" wide.

Color	Fabric	Name/SKU	Yardage	Color	Fabric	Name/SKU	Yardage
	S	WELM-19504-90 PEARL	1/4 yard		Binding*	WELM-19504-181 ONYX <i>*Also used for Fabric I</i>	5/8 yard
	T	WELM-19503-186 SILVER	1/4 yard	<p>You will also need: 5-1/4 yards for backing 4-1/4 yards Fusible web, such as Heat N Bond</p>			
<p>Copyright 2020, Robert Kaufman For individual use only - Not for resale</p>							

## Notes Before You Begin

- Read through all of the instructions before beginning.
- All of the seam allowances are 1/4" unless otherwise noted.
- Press seam allowances open unless otherwise noted.
- Width of fabric (WOF) is equal to at least 42" wide.
- Right sides together has been abbreviated to RST.
- Remember to measure twice and cut once!

## Cutting Instructions

### From Fabric A, cut:

one 5" x WOF strip. Subcut:  
 eight 5" squares for the HSTs  
 four 4-1/2" x WOF strips. Subcut:  
 fourteen 4-1/2" x 8-1/2" rectangles  
 two of Template 2

### From Fabric B, cut:

two 5" x WOF strip. Subcut:  
 ten 5" squares for the HSTs  
 four 4-1/2" x WOF strips. Subcut:  
 fifteen 4-1/2" x 8-1/2" rectangles  
 two of Template 2

**From Fabric C, cut:**

one 5" x WOF strip. Subcut:  
eight 5" squares for the HSTs  
four 4-1/2" x WOF strips. Subcut:  
sixteen 4-1/2" x 8-1/2" rectangles  
two of Template 2

**From Fabric D, cut:**

one 5" x WOF strip. Subcut:  
eight 5" squares for the HSTs  
four 4-1/2" x WOF strips. Subcut:  
fourteen 4-1/2" x 8-1/2" rectangles  
two of Template 2

**From Fabric E, cut:**

one 5" x WOF strip. Subcut:  
five 5" squares for the HSTs  
four 4-1/2" x WOF strips. Subcut:  
thirteen 4-1/2" x 8-1/2" rectangles  
two of Template 2

**From Fabric F, cut:**

two 5" x WOF strips. Subcut:  
eleven 5" squares for the HSTs  
four 4-1/2" x WOF strips. Subcut:  
sixteen 4-1/2" x 8-1/2" rectangles  
two of Template 2

**From Fabric G, cut:**

two 5" x WOF strips. Subcut:  
eleven 5" squares for the HSTs  
four 4-1/2" x WOF strips. Subcut:  
thirteen 4-1/2" x 8-1/2" rectangles  
two of Template 2

**From Fabric H, cut:**

one 5" x WOF strip. Subcut:  
six 5" squares for the HSTs  
two 4-1/2" x WOF strips. Subcut:  
six 4-1/2" x 8-1/2" rectangles  
two of Template 2

**From Fabric I, cut:**

one 5" x WOF strip. Subcut:  
eight 5" squares for the HSTs  
two 4-1/2" x WOF strips. Subcut:  
eight 4-1/2" x 8-1/2" rectangles  
two of Template 2

**From Fabric J, cut:**

one 5" x WOF strip. Subcut:  
    five 5" squares for the HSTs  
four 4-1/2" x WOF strips. Subcut:  
    thirteen 4-1/2" x 8-1/2" rectangles  
two of Template 2

**From each of Fabrics K-T, cut:**

two of Template 1

**From the Binding Fabric, cut:**

eight 2-1/2" x WOF strips

## Prepare the Templates

**Step 1:** Copy all templates at 100%.

**Step 2:** On the fusible web, trace the indicated number of each Template, as instructed on the Template sheets. Be sure to note the quantity. Tip: In addition to the piece number, include the fabric letter shown on the Template. This will help you to ensure you are fusing it to the correct fabric.

**Step 3:** Cut out each traced shape, leaving 1/4"-1/2" of excess fusible web outside the marked lines. You will NOT cut on the marked/traced lines at this point.

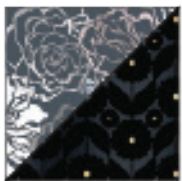
**Step 4:** Follow in the steps below to fuse each piece to the appropriate fabric. Fuse, following the manufacturer's instructions, then cut out each shape on the marked line. Be sure to cut out the center circle on all of the Template 2 pieces.

## Assemble the Half-Square Triangles

**Step 5:** Pair a 5" Fabric D square with a 5" Fabric G square, RST. Mark a diagonal line on the wrong side of one square. Sew 1/4" away from both sides of the marked line. Cut on the marked line, creating two half-square triangles (HSTs). Press toward the darker fabric. Trim to 4-1/2" square. Repeat to make six D/G HSTs.



**Step 6:** Repeat Step 1 to make:



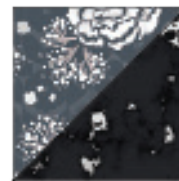
six H/I HSTs



six F/H HSTs



six G/I HSTs

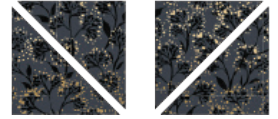


four D/F HSTs

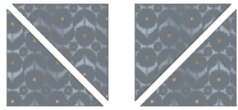


six D/E HSTs

**Step 7:** Divide the 5" Fabric A squares in half. With the print oriented as in the illustration, cut one half of the squares on the diagonal, cutting from upper left to lower right. Cut the remaining half of the squares on the diagonal, cutting from upper right to lower left.



Repeat this process for the 5" Fabric E, F, G, I and J squares.



Fabric E



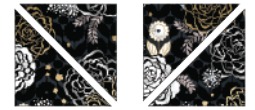
Fabric F



Fabric G

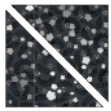


Fabric I

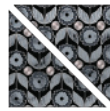


Fabric J

Repeat this process for the remaining 5" Fabric B and Fabric C squares. Note: These prints are non-directional, so they may all be cut along one diagonal without a need to orient any specific way.

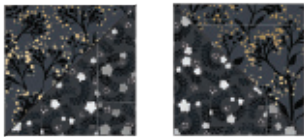


Fabric B



Fabric C

**Step 8:** Pair Step 7 triangles and sew together in the quantities and orientations shown here. Press.



three of each type of A/B HST



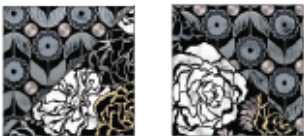
three of each type of C/J HST



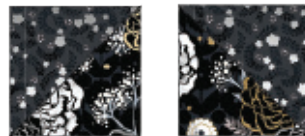
three of each type of A/F HST



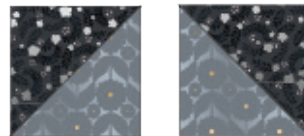
two of each type of A/I HST



five of each type of C/G HST

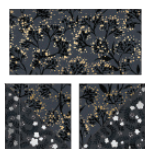


two of each type of B/J HST

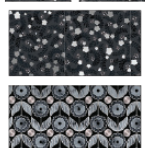


two of each type of B/E HST

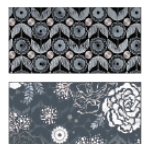
## Assemble the Blocks



**Step 9:** Gather:  
one rectangle in each of Fabrics A, B, C and D  
two A/B HSTs (one of each style)



Arrange the units into as shown. Note the fabric placement and block orientation in the Block Assembly Diagram.

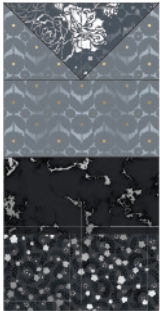


**Step 10:** Sew the HSTs together to form the second row. Press.

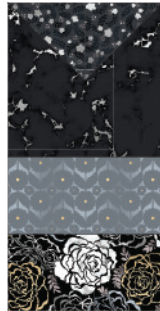


**Step 11:** Sew the rectangles together, to form the block. The resulting A Block will measure 8-1/2" x 20-1/2". Repeat to make three A Blocks.

**Step 12:** Using the process shown in Steps 9-11, make the following blocks, in the quantities indicated. Note the fabric placement and HST orientation.



three B Blocks



three C Blocks



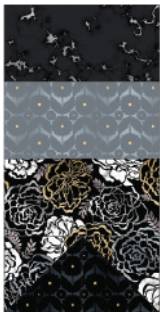
three D Blocks



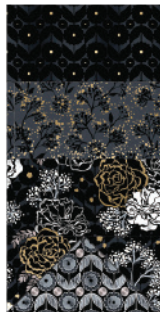
three E Blocks



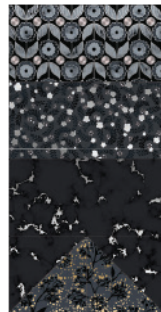
three F Blocks



three G Blocks



three H Blocks



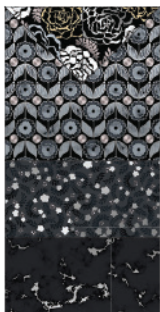
three I Blocks



three J Blocks



two K Blocks



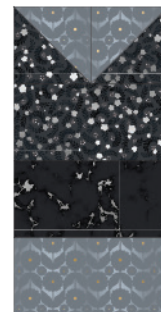
two L Blocks



two M Blocks



two N Blocks



two O Blocks

## Assemble the Flowers



**Step 13:** Using the Appliqué Placement diagram as a guide, place the assorted Template 2 pieces on each Template 1 piece in the pairings indicated. Pin in place. One piece at a time, peel the paper backing from the Template 2 piece and fuse to the Template 1. Continue by peeling the backing to the Template 2 pieces and fusing to the Blocks as indicated in the Quilt Assembly Diagram. Edge stitch the templates to the block.



*Appliqué Placement diagram*

### Tip:

Flower 1 (Fabrics K and E) will be sewn to an F and an M Block.  
Flower 2 (Fabrics L and D) will be sewn to a K and an I Block.  
Flower 3 (Fabrics M and A) will be sewn to a D and a G Block.  
Flower 4 (Fabrics N and I) will be sewn to a C and a B Block.  
Flower 5 (Fabrics O and H) will be sewn to an I and a B Block.  
Flower 6 (Fabrics P and G) will be sewn to an O and an M Block.  
Flower 7 (Fabrics Q and J) will be sewn to an A and an O Block.  
Flower 8 (Fabrics R and B) will be sewn to a G and a J Block.  
Flower 9 (Fabrics S and C) will be sewn to an E and an H Block.  
Flower 10 (Fabrics T and F) will be sewn to a K and a D Block.



## Assemble the Quilt



**Step 14:** Arrange the blocks into eight columns. Note the fabric placement and block orientation in the Quilt Assembly Diagram.

**Step 15:** Sew the blocks together to form the columns. Press the seams in one direction.

**Step 16:** Sew the columns together to form the quilt center. Press the seams open or to one side.




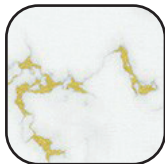


Your quilt top is complete! Baste, quilt, bind and enjoy!

# HILLSIDE - Cream Colorstory










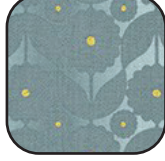






## Fabric and Supplies Needed

*Fabric amounts based on yardage that is 42" wide.*

Color	Fabric	Name/SKU	Yardage	Color	Fabric	Name/SKU	Yardage
	A	WELM-19502-181 ONYX	7/8 yard		D	WELM-19501-187 PLATINUM	7/8 yard
	B	WELM-19502-185 STEEL	1 yard		E	WELM-19505-155 STONE	7/8 yard
	C	WELM-19504-90 PEARL	7/8 yard		F	WELM-19503-186 SILVER	1 yard

# HILLSIDE - Cream Colorstory

Fabric amounts based on yardage that is 42" wide.

Color	Fabric	Name/SKU	Yardage	Color	Fabric	Name/SKU	Yardage
	G	WELM-19501-155 STONE	1 yard		O	WELM-19500-185 STEEL	1/4 yard
	H	WELM-19505-187 PLATINUM	7/8 yard		P	WELM-19500-181 ONYX	1/4 yard
	I	WELM-19503-160 TAUPE	7/8 yard		Q	WELM-19499-181 ONYX	1/4 yard
	J	WELM-19500-160 TAUPE	7/8 yard		R	WELM-19503-181 ONYX	1/4 yard
	K	WELM-19504-185 STEEL	1/4 yard		S	WELM-19502-184 CHARCOAL	1/4 yard
	L	WELM-19499-185 STEEL	1/4 yard		T	WELM-19505-181 ONYX	1/4 yard
	M	WELM-19501-181 ONYX	1/4 yard		Binding*	WELM-19503-160 TAUPE	5/8 yard
	N	WELM-19504-181 ONYX	1/4 yard			<i>*Also used for Fabric I</i>	

Copyright 2020, Robert Kaufman  
For individual use only - Not for resale

You will also need:  
5-1/4 yards for backing  
Fusible web, such as Heat N Bond

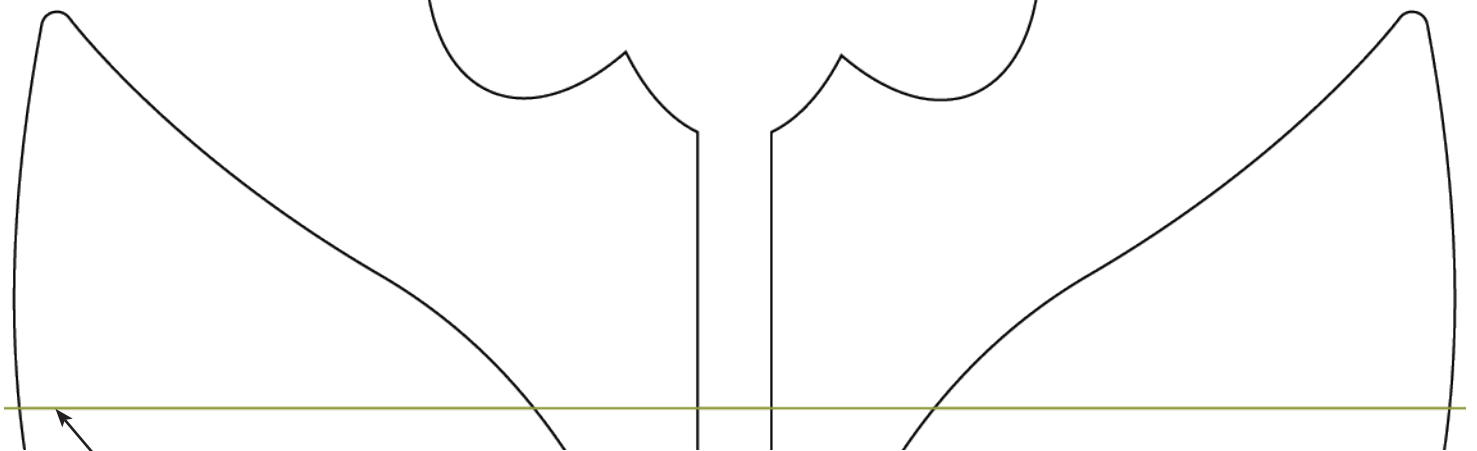
# Templates

Print at 100%.

Check size printed correctly using 1" box for scale prior to cutting fabric.

1" box for  
scale

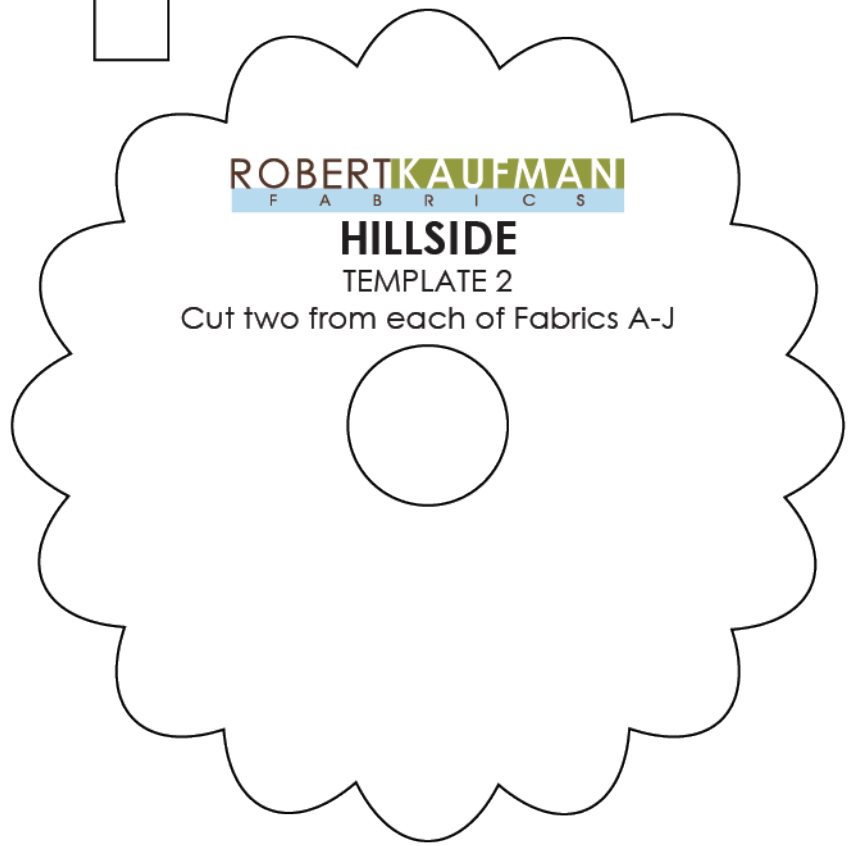
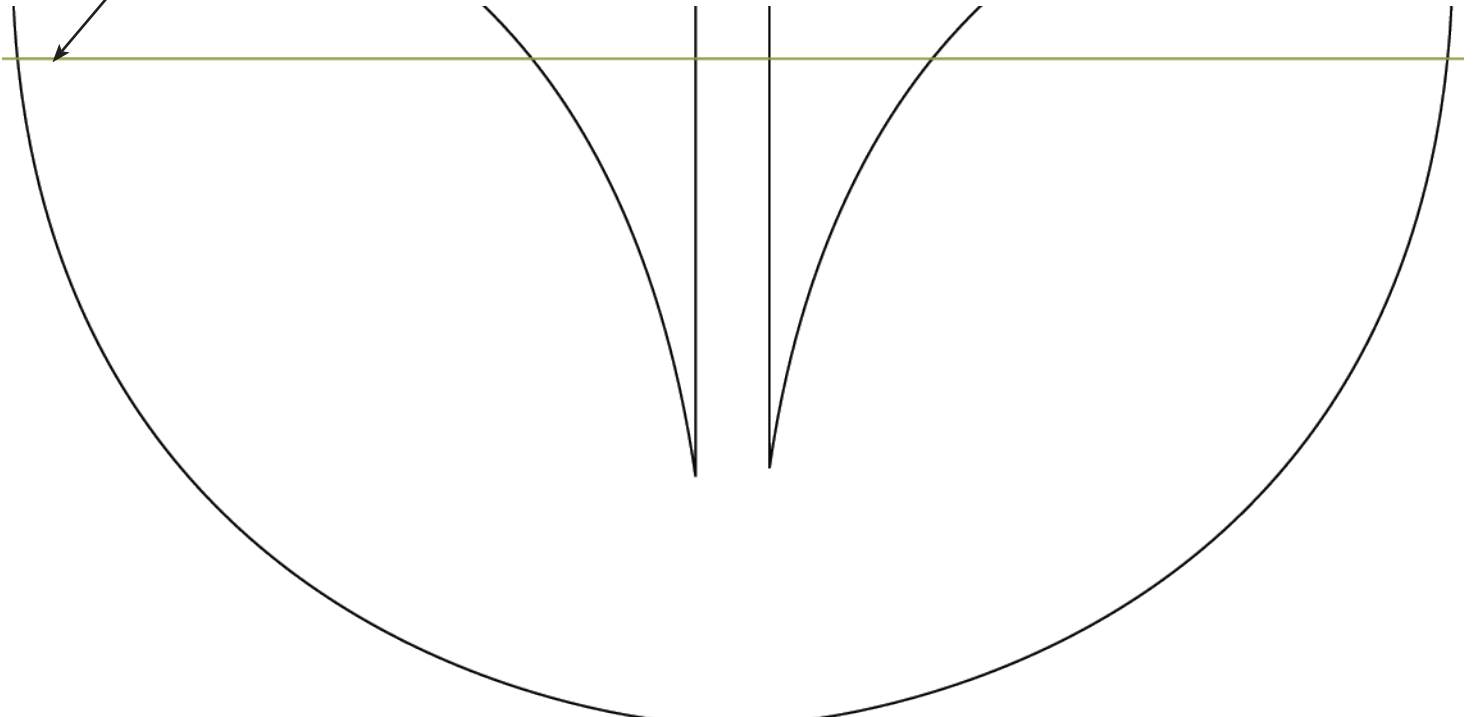
**ROBERTKAUFMAN**  
F A B R I C S  
**HILLSIDE**  
TEMPLATE 1  
Cut two from each of Fabrics K-L



Align the two parts of Template 1 along the green line. Tape together to form the entire Template 1.

# Templates

Align the two parts of Template 1 along the green line. Tape together to form the entire Template 1.



This pattern may be used for personal purposes only and may not be reproduced in any form without the express permission from Robert Kaufman Fabrics. This pattern is not for resale. All patterns, unless otherwise attributed, are © Robert Kaufman Co., Inc. 2005-2020. All rights reserved.