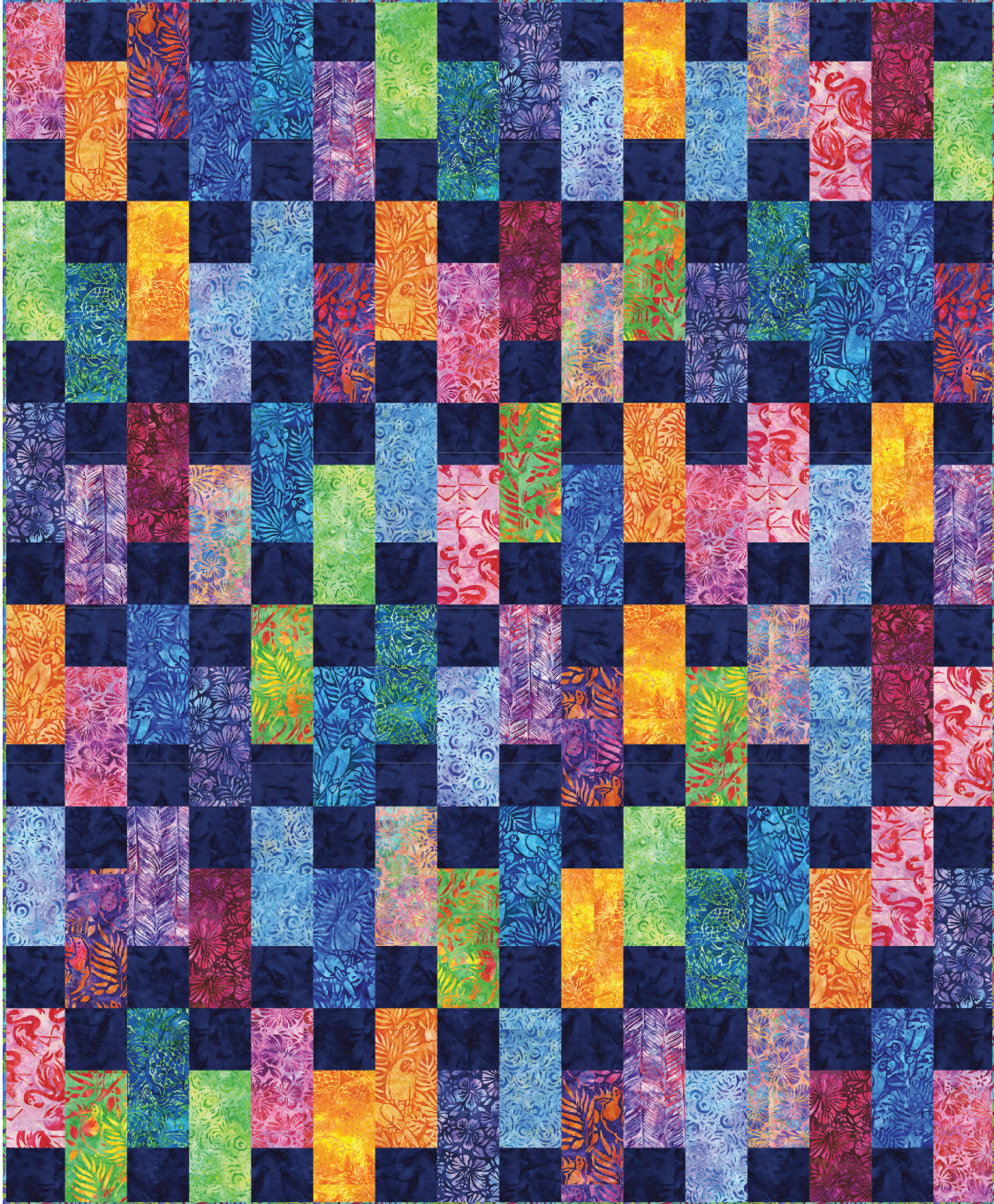


# BOARDWALK

Designed by Ariga Wilson for RK  
[www.robertkaufman.com](http://www.robertkaufman.com)

Featuring ARTISAN  
BATIKS

Welcome To Paradise  
by 



Finished quilt measures: 64" x 78"




Difficulty Rating: **Beginner**

**ROBERTKAUFMAN**  
F A B R I C S

For questions about this pattern, please email [Patterns@RobertKaufman.com](mailto:Patterns@RobertKaufman.com).

# Fabric and Supplies Needed

Fabric amounts based on yardage that is 42" wide.

Color	Name/SKU	Yardage	Color	Fabric	Name/SKU	Yardage
	FQ-1785-22 <b>WELCOME TO PARADISE</b> Containing each of the following fabrics:	one Fat Quarter Bundle				
	<ul style="list-style-type: none"> <li>• AMD-20312-281 POMEGRANATE</li> <li>• AMD-20312-111 FLAMINGO</li> <li>• AMD-20311-111 FLAMINGO</li> <li>• AMD-20312-197 TROPICAL</li> <li>• AMD-20318-209 SUNBURST</li> <li>• AMD-20314-8 ORANGE</li> <li>• AMD-20316-50 LIME</li> <li>• AMD-20313-50 LIME</li> <li>• AMD-20314-50 LIME</li> <li>• AMD-20316-237 BERMUDA</li> <li>• AMD-20318-7 GREEN</li> <li>• AMD-20317-213 TEAL</li> <li>• AMD-20318-213 TEAL</li> <li>• AMD-20315-70 AQUA</li> <li>• AMD-20314-70 AQUA</li> <li>• AMD-20314-4 BLUE</li> <li>• AMD-20313-4 BLUE</li> <li>• AMD-20313-61 PERIWINKLE</li> <li>• AMD-20312-235 HYACINTH</li> <li>• AMD-20317-414 HEATHER</li> <li>• AMD-20316-6 PURPLE</li> <li>• AMD-20315-205 MULTI</li> </ul>					
<b>Plus additional yardage of:</b>						
				A	AMD-7000-72 COBALT	1-1/2 yards
				Binding*	AMD-20316-237 BERMUDA <i>*Also included in the Fat Quarter Bundle</i>	5/8 yard
<p>You will also need: 5 yards for backing</p>						
<p>Copyright 2021, Robert Kaufman For individual use only - Not for resale</p>						

## Notes Before You Begin

- Read through all of the instructions before beginning.
- All of the seam allowances are 1/4" unless otherwise noted.
- Press seam allowances open unless otherwise noted.
- Width of fabric (WOF) is equal to at least 42" wide.
- Right sides together has been abbreviated to RST.
- Remember to measure twice and cut once!

## Cutting Instructions

### From each fat quarter, cut:

four or five 4-1/2" x 9-1/2" rectangles, for a total of ninety-six rectangles

*Note the orientation of any directional fabrics and cut accordingly, based on their placement in the quilt.*

### From Fabric A, cut:

eleven 4-1/2" x WOF strips. Subcut:

ninety-six 4-1/2" squares

### From the Binding Fabric, cut:

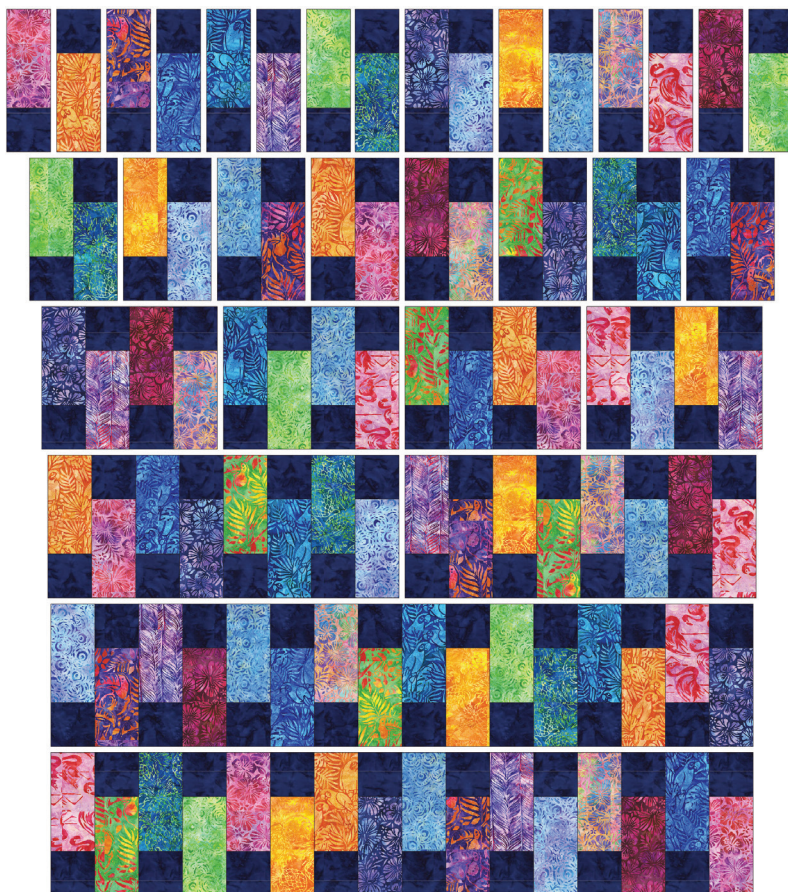
eight 2-1/2" x WOF strips

## Assemble the Units

**Step 1:** Sew a Fabric A square to the end of each print rectangle. Press toward the rectangle. Repeat to make ninety-six units like this, each measuring 4-1/2" x 13-1/2".



## Assemble the Quilt



**Step 2:** Arrange the blocks into six rows of sixteen units. Note the block orientation in the Quilt Assembly Diagram. Arrange the fabrics as shown in the Diagram, or in a random placement of your choosing.

**Step 3:** Sew the units together to form rows. Press the rows to the left in the odd numbered rows and to the right in the even numbered rows.

**Step 4:** Sew the rows together to form the quilt center. Press the row seams open.

Your quilt top is complete! Baste, quilt, bind and enjoy!

This pattern may be used for personal purposes only and may not be reproduced in any form without the express permission from Robert Kaufman Fabrics. This pattern is not for resale. All patterns, unless otherwise attributed, are © Robert Kaufman Co., Inc. 2005-2021. All rights reserved.