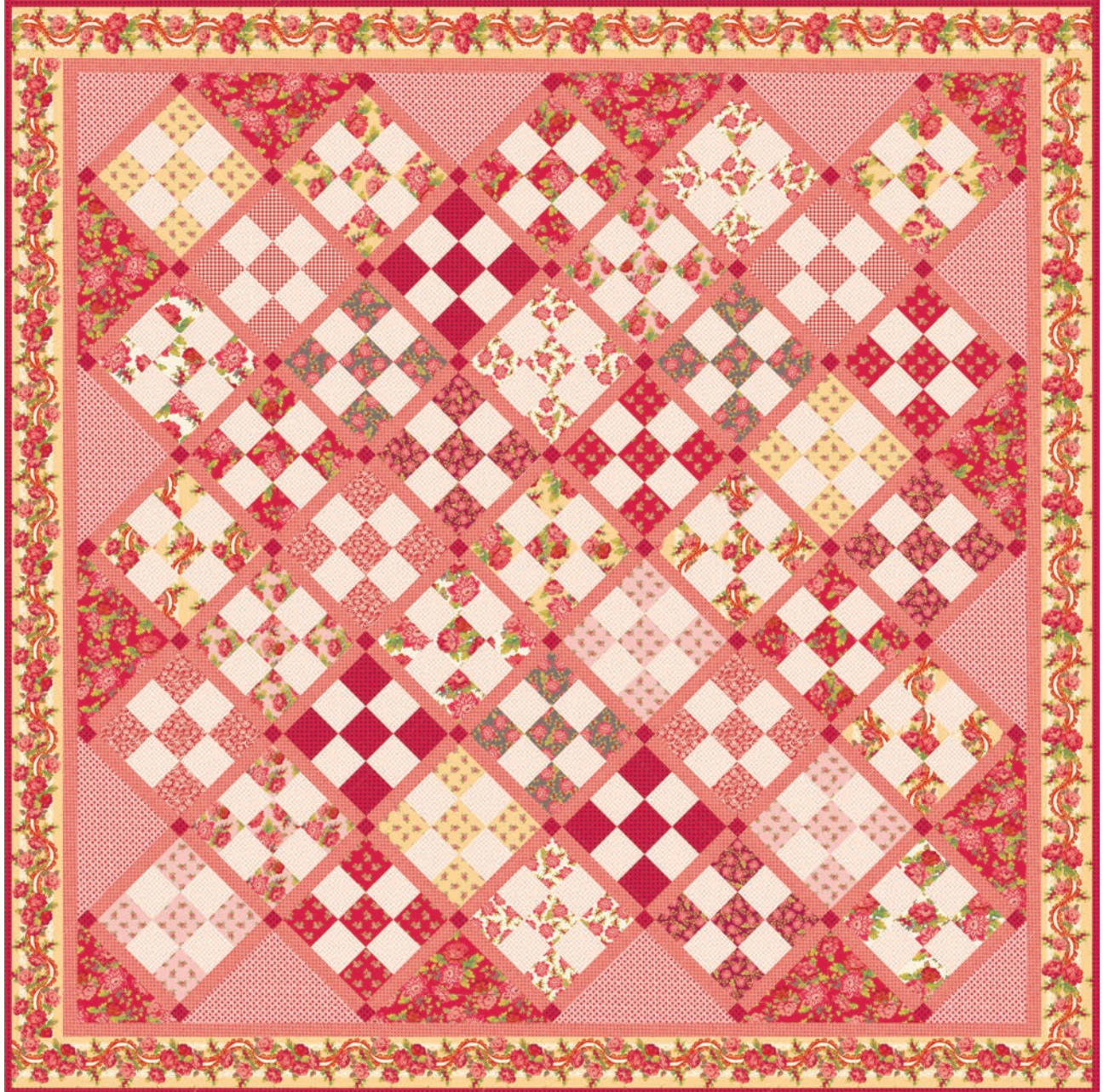


MAYWOOD  STUDIO

Sweet Beginnings Quilt



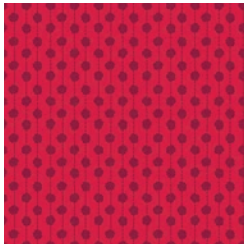
Sweet Beginnings Quilt by Jera Brandvig
featuring her Sweet Beginnings collection from Maywood Studio

61-1/2" x 61-1/2"

#madewithmaywood
maywoodstudio.com



MAYWOOD STUDIO



Fabric 1: 10015-R
*includes binding



Fabric 2: 10012-E



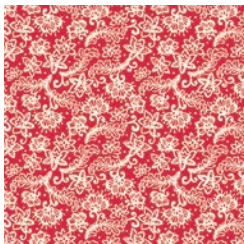
Fabric 3: 10010-E



Fabric 4: 10010-S



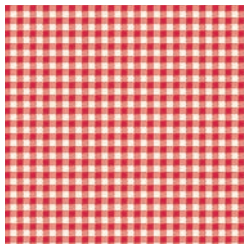
Fabric 5: 10012-R2



Fabric 6: 10014-R



Fabric 7: 10013-R



Fabric 8: 10017-R



Fabric 9: 10010-P



Fabric 10: 10011-S



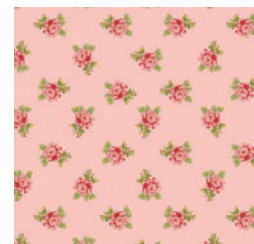
Fabric 11: 10012-K



Fabric 12: 10010-R



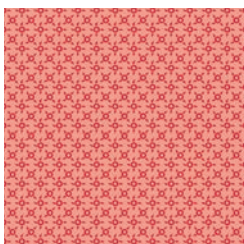
Fabric 13: 10013-S



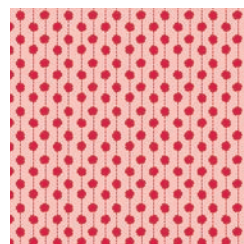
Fabric 14: 10013-P



Fabric 15: 10016-E



Fabric 16: 10016-P

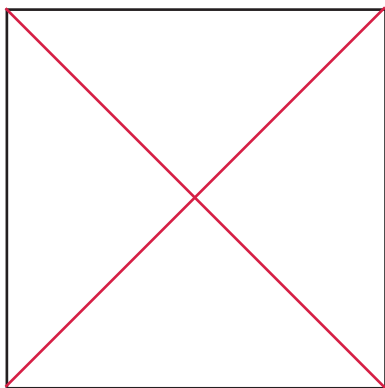


Fabric 17: 10015-P

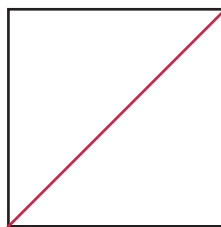
Fabric Requirements

Fabric 1 includes binding	10015-R	7/8 yard
Fabric 2	10012-E	1/8 yard
Fabric 3	10010-E	1/8 yard
Fabric 4	10010-S	1/8 yard
Fabric 5	10012-R2	1/8 yard
Fabric 6	10014-R	1/8 yard
Fabric 7	10013-R	1/8 yard
Fabric 8	10017-R	1/8 yard
Fabric 9	10010-P	1/8 yard
Fabric 10	10011-S	2 yards
Fabric 11	10012-K	1/8 yard
Fabric 12	10010-R	1/3 yard
Fabric 13	10013-S	1/8 yard
Fabric 14	10013-P	1/8 yard
Fabric 15	10016-E	7/8 yard
Fabric 16	10016-P	1-3/8 yards
Fabric 17	10015-P	1/3 yard
Backing	your choice	4 yards

WOF - Width of Fabric
LOF - Length of Fabric
RST - Right Sides Together



Cut twice on the diagonal.



Cut once on the diagonal.

Cutting

Finished Size 61-1/2" x 61-1/2"

Fabric 1

Cut (1) 2-1/2" x WOF strip. Subcut into
(15) 2-1/2" squares for the 9 patch blocks
Cut (3) 1-1/2" x WOF strips
(60) 1-1/2" x 1-1/2" cornerstone squares
Cut (7) 2-1/2" x WOF strips for binding.

Fabrics 2, 3, 4, 5, 6, 7, 9, 11, 13, 14

Cut (15) 2-1/2" squares

Fabric 8

Cut (10) 2-1/2" squares

Fabric 10

Cut (4) 5" x **LOF** strips for borders, centering the sections on the stripes.
From the remaining fabric, cut (15) 2-1/2" squares

Fabric 12

Cut (15) 2-1/2" squares
Cut (2) 11" squares, cut twice on the diagonal for 8 side triangles
Cut (1) 6-1/2" square, cut once on the diagonal for 2 corner triangles

Fabric 15

Cut (11) 2-1/2" x WOF strips. Subcut into:
(165) 2-1/2" background squares

Fabric 16

Cut (17) 1-1/2" x WOF strips Subcut into:
(100) 1-1/2" x 6-1/2" sashing strips
Cut (6) 1-1/2" x WOF strips for the inner border

Fabric 17

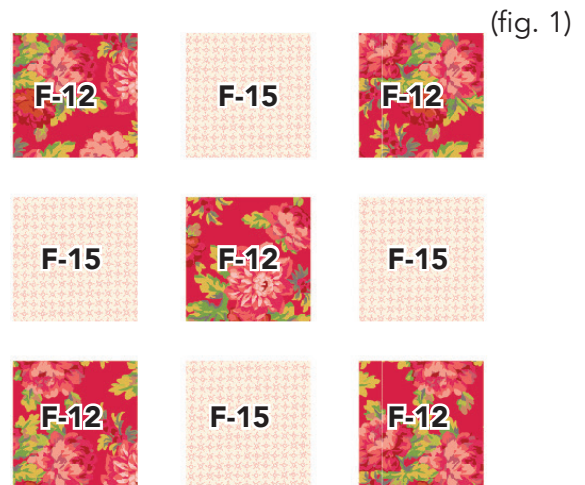
Cut (2) 11" squares, cut twice on the diagonal for 8 side triangles
Cut (1) 6-1/2" square, cut once on the diagonal for 2 corner triangles.

Sweet Beginnings Quilt Instructions

Please read all instructions before you begin. Seam allowance is 1/4" unless otherwise stated. Fabric is abbreviated as 'F'. For example, F1 refers to Fabric 1. Press in the direction of arrows.

9-Patch Blocks

1. Gather (4) F-15 background squares and (5) F-12 squares.
2. Arrange the fabric squares as illustrated. (fig. 1)
3. Sew into 3 rows of 3 squares each. Press rows in opposite directions to nest the seams. (fig. 2)
4. Sew row to row. Press in one direction. (fig. 3)
5. Repeat steps 1-4 to make a total of (3) 9-patch blocks for Fabrics 1-7, 9-14. Make (2) blocks with F-8. You will have a total of 41 blocks.



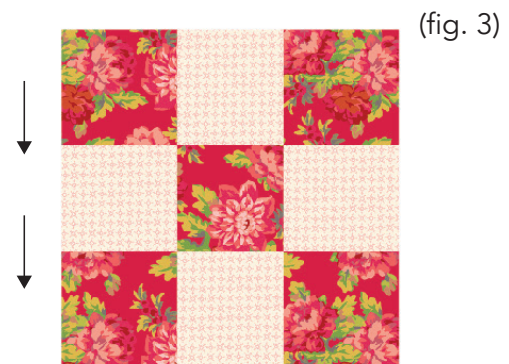
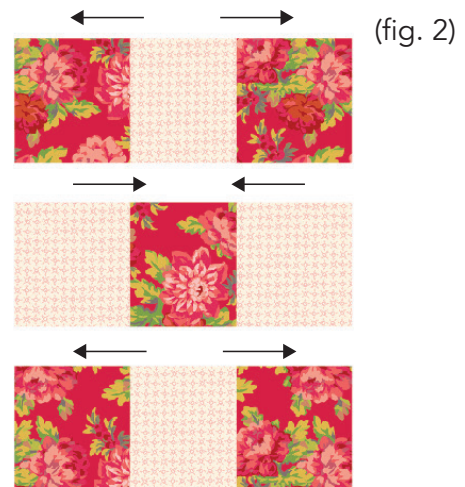
Assemble the Quilt Top

6. Arrange the sashing, cornerstones, corner and side triangles in a diagonal formation as illustrated on p.5.
7. Sew the F-16 sashing strips between each block. Press toward sashing.
9. Sew the F-17 side triangles to each row as illustrated on p.5. Press toward sashing.
8. Sew the F-16 sashing and F-1 cornerstones into rows. Press toward sashing.
8. Sew row to row. Press in one direction.

Press the quilt top.

Sew the Borders

9. Sew the (6) F-16 inner border strips together end to end. Measure the length of the quilt. Cut two strips to this measurement. Sew to the sides of the quilt.
10. Measure the width of the quilt. Cut two strips to this measurement. Sew to the top and bottom of the quilt. Press toward the inner borders.
11. Repeat this process with the F-10 border strips. Press toward the inner borders.



Make 4
6-1/2" x 6-1/2"

F-10



7. Layer the backing (wrong side up), batting and quilt top (right side up). Baste layers to secure. Quilt as desired. Trim the excess backing and batting.

8. Sew the binding strips together into one continuous strip. Press in half length-wise. Sew the binding to the quilt top with a $\frac{3}{8}$ " seam allowance. Turn the binding to the back side of the quilt and stitch down by hand with matching thread.

Sweet Beginnings Quilt Top Planning Diagram

