

1665

Autumn Day

By Nancy Mink



Table Topper: 51 1/2" Square



www.wilmingtonprints.com

Wilmington Prints: A World of Possibilities

Autumn Day

Please read all instructions carefully AND identify all fabrics before beginning.



All instructions include a 1/4" seam allowance and strips are cut selvage to selvage, unless stated otherwise.


1. Cut the following:

Fabric A - PLEASE NOTE: Panels do not always print the size intended. For this pattern, panels have a coping border added then trimmed so they will fit the quilt correctly.

Fussy cut 1/4" beyond outside edges of 4 panels to approximately 11-1/2" x 16-1/2"

Fabric B - Referring to the quilt image, fussy cut (4) 3-1/2" x 55" strips from top of pumpkin stripe, the length of fabric parallel to selvage

Fabric C - Cut (1) 11-3/4" strip, subcut (1) 11-3/4" square [then cut in half twice diagonally for 4 triangles], (2) 8-3/8" squares [cut in half diagonally for a 4 triangles ], and (1) 7-1/4" square [cut in half diagonally twice for 4 triangles 


Fabric D - Cut (1) 7-1/4" strip, subcut (1) 7-1/4" square [then cut in half twice diagonally for 4 triangles] and (2) 6-7/8" squares [then cut in half diagonally for 4 triangles] 

Cut (5) 1-1/2" strips, sewn together end to end and cut into (2) 1-1/2" x 46" and (2) 1-1/2" x 44" borders

Cut (4) 1-1/2" strips, subcut (16) 1-1/2" x 10" strips

Fabric E - Cut (1) 7-1/4" strip, subcut (2) 7-1/4" squares then cut in half twice diagonally for 8 triangles. Cut remaining strip into (4) 1-1/2" x 27" strips, subcut (8) 1-1/2" x 12" strips

Cut (2) 1-1/2" strips, subcut (4) 1-1/2" x 18" strips

Fabric F - Cut (1) 6-7/8" strip, subcut (2) 6-7/8" squares then cut in half diagonally for  4 triangles

Cut (5) 1-3/4" strips, subcut (4) 1-3/4" x 20" and (8) 1-3/4" x 12" strips

Cut (2) 1-1/4" strips, subcut (4) 1-1/4" x 20" strips

Fabric G - Cut (1) 6-1/2" strip, subcut (1) 6-1/2" square and (16) 1-1/2" squares
Cut (6) 2-1/2" strips (binding)

Fabric H - Cut (5) 1-1/2" strips, subcut (4) 1-1/2" x 20" and (8) 1-1/2" x 13" strips

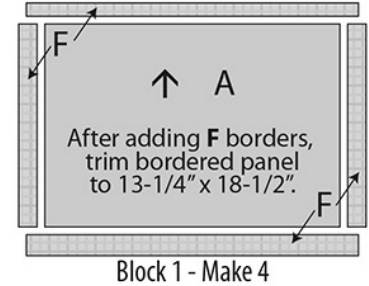
2. Piecing Order:

1. Stitch **Fabric F** 1-3/4" x 12" strips to sides of the **Fabric A** panel.

Trim strip ends even. Add a 1-3/4" x 20" **Fabric E** strip to bottom and a

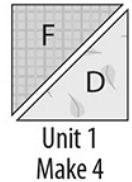
1-1/4" x 20" **Fabric E** strip to top of panel.

Measuring from the top, trim bottom and sides of bordered panel to 13-1/4" x 18-1/2" (unfinished). Make a total of 4 **Block 1**.



Arrows indicate orientation of directional prints.

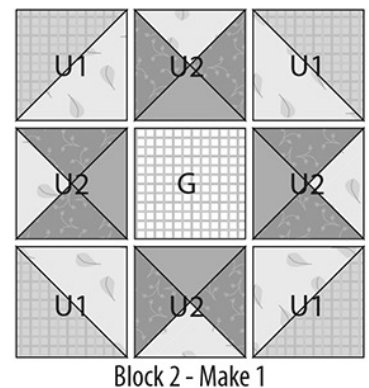
2. Sew 1 each **Fabrics D** and **F** 6-7/8" triangles together along their long edges. Make a total of 4 Unit 1 (6-1/2" square unfinished).



3. Arrange 2 **Fabric E** 7-1/4", 1 **Fabric C** 7-1/4", and 1 **Fabric D** 7-1/4" triangles as shown. Stitch triangles together. Make a total of 4 Unit 2 (6-1/2" square unfinished) noting orientation of **Fabric C** triangle.

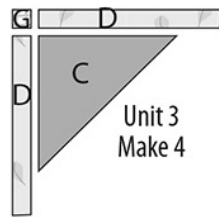


4. Arrange 4 Unit 1, 4 Unit 2, and the **Fabric G** 6-1/2" square in 3 rows. Stitch into rows. Sew rows together to complete **Block 2** (18-1/2" square unfinished).

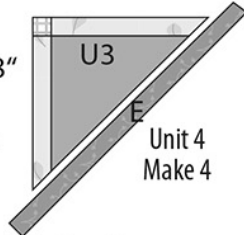


Autumn Day

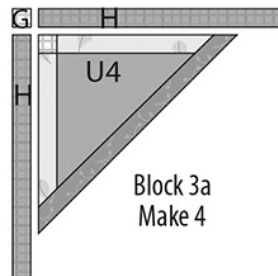
5. Arrange a **Fabric C** 8-3/8" triangle, 1 **Fabric G** 1-1/2" square, and 2 **Fabric D** 1-1/2" x 10" strips in 2 rows as shown. Stitch into rows. Sew rows together. Trim strip ends even with long edge of **Fabric C** triangle. Make 4 Unit 3 (10-3/8" x 10-3/8" x 14-5/8" unfinished).



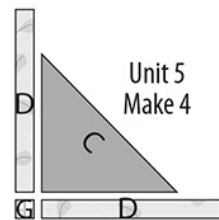
6. Stitch a **Fabric E** 1-1/2" x 18" strip centered on long edge of Unit 3. Trim strip ends even with side edges of Unit 3. Make a total of 4 Unit 4 (11-5/8" x 11-5/8" x 16-1/2" unfinished).



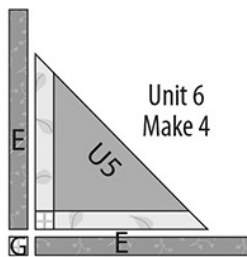
7. Arrange Unit 4, 1 **Fabric G** 1-1/2" square, and 2 **Fabric H** 1-1/2" x 13" strips in 2 rows as shown. Stitch into rows. Sew rows together. Trim strip ends even with **Fabric E** long edge. Make a total of 4 **Block 3a** (13-5/8" x 13-5/8" x 19-1/4" unfinished).



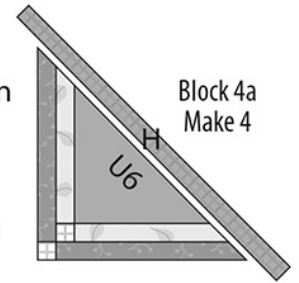
8. Arrange a **Fabric C** 11-3/4" triangle, 1 **Fabric G** 1-1/2" square, and 2 **Fabric D** 1-1/2" x 10" strips in 2 rows as shown. Stitch into rows. Sew rows together. Trim strip ends even with long edge of **Fabric C** triangle. Make a total of 4 Unit 5 (10-3/8" x 10-3/8" x 14-5/8" unfinished).



9. Arrange Unit 5, 1 **Fabric G** 1-1/2" square, and 2 **Fabric E** 1-1/2" x 12" strips in 2 rows as shown. Stitch into rows. Sew rows together. Trim strip ends even with long edge of Unit 5. Make a total of 4 Unit 6 (12-1/4" x 12-1/4" x 17-1/4" unfinished).



10. Stitch a **Fabric H** 1-1/2" x 20" strip centered on long edge of Unit 6. Trim strip ends even with side edges of Unit 6. Make a total of 4 **Block 4a** (13-5/8" x 13-5/8" x 19-1/4" unfinished).

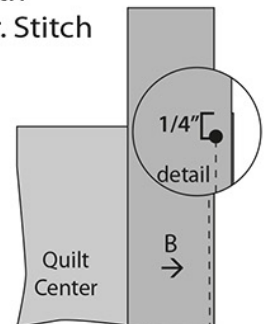


11. Refer to Quilt Layout (Page 4) for arrangement and placement of blocks and borders.

12. Arrange blocks in 5 diagonal rows. Stitch blocks into diagonal rows. Sew rows together. Quilt center measures 44" square (unfinished).

13. Sew **Fabric D** 1-1/2" x 44" borders to right and left sides of quilt center. Add **Fabric D** 1-1/2" x 46" borders to top and bottom of quilt center.

14. Center **Fabric B** 3-1/2" x 55" borders on all sides of quilt center with top edge next to quilt center. Stitch borders to sides starting and stopping 1/4" from corners of quilt center. Do not trim. Press borders out.



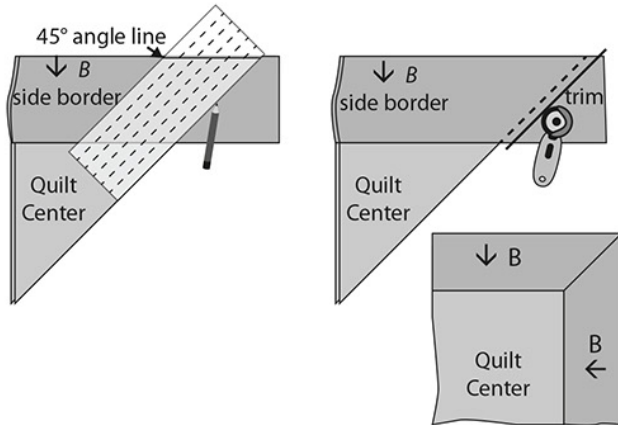
Letters in italics indicate wrong side of fabric. Arrows indicate orientation of directional prints.

Autumn Day

14. Working with 1 corner at a time, fold the quilt right sides together so the outside edges of the borders line up. Using a 45-degree ruler, mark from the end of border seams to outer edges of borders. Stitch along marked line. Trim seam allowance to 1/4". Press corner seam open. Repeat on remaining corners.

15. The quilt measures approximately 52" square (unfinished). Make backing (**Fabric I**) approximately 8" larger than the top.

16. Layer and baste top, batting, and backing together. Quilt as desired. Attach binding (**Fabric G**) and enjoy!!

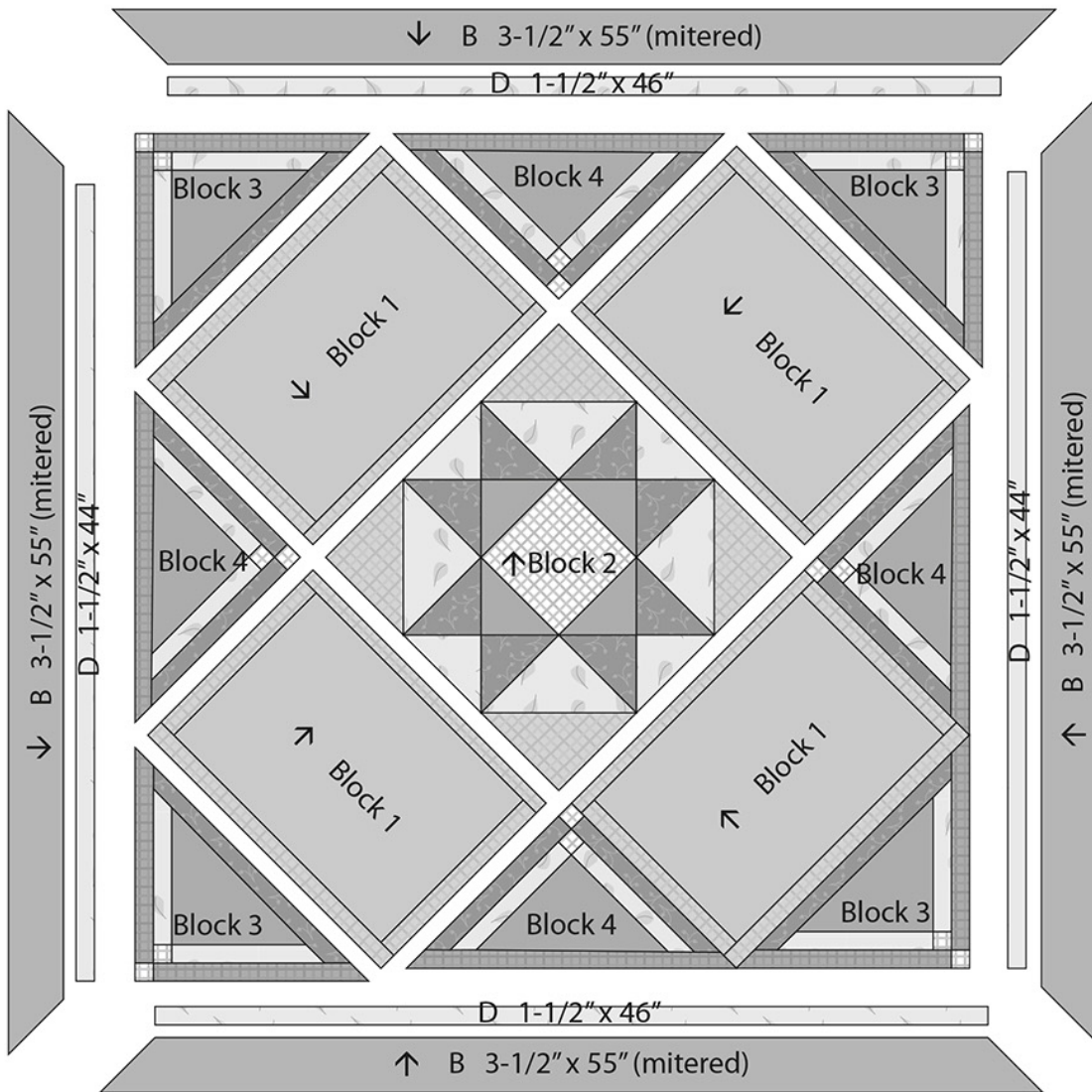


Autumn Day

QUILT LAYOUT

Border measurements are the cut size.

Arrows indicate orientation of directional prints.



1665

Autumn Day

By Nancy Mink



Fabric A
1665-33862-298
2/3 yard (1 Panel)



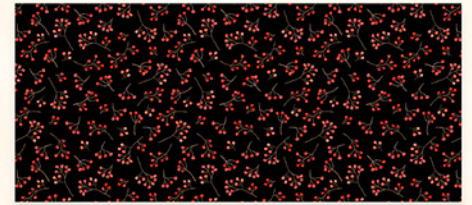
Fabric B
1665-33863-982
1 3/4 yards



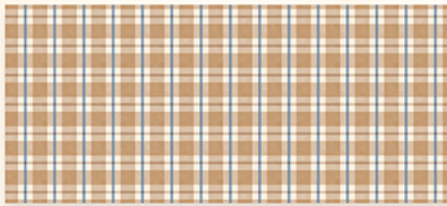
Fabric C
1665-33865-982
1/2 yard



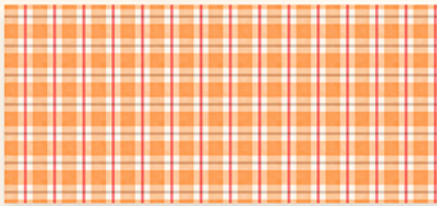
Fabric D
1665-33866-283
3/4 yard



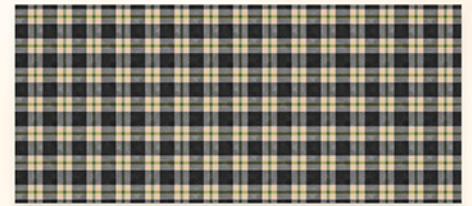
Fabric E
1665-33869-932
1/2 yard



Fabric F
1665-33870-214
2/3 yard



Fabric G
1665-33870-813
3/4 yard (incl. binding)



Fabric H
1665-33870-927
1/3 yard



Fabric I
1665-33865-282
3 1/2 yards
(Suggested Backing)

