

River Rock

ANDOVER FABRICS



100
years



Desert Bloom Quilt designed by: **Janet Houts** • Quilt Size: **72" x 96"**

Skill Level: **Intermediate** • andoverfabrics.com

andover

•
•
• makower.uk
•

Free Pattern Download Available

1384 Broadway New York, NY 10018
Tel. (800) 223-5678 • andoverfabrics.com

10/15/20

Desert Bloom Quilt

Introducing Andover Fabrics new collection: **RIVER ROCK** by Andover Fabrics

Quilt designed by Janet Houts



Quilt finishes 72" x 96"

12 Blocks: 24" x 24"

Eye-popping pinwheels twirl in the middle of gray and white stars. The over-sized half-square triangle patches make this full-size quilt a snap to make. The fun will come when you use your own color sense to plan fabric combinations.

Fabric Requirements

		Yardage	Fabric	
Fabric A	blocks	4 yards	CS-10-Cottonball	
16 Gray	blocks	fat 1/4 yard each		
	9731 C	9732 C	9733 C	9734 C
	9735 C	9736 C	*9737 C	**9738 C
	9739 C	9740 C	9741 C	9742 C
	9743 C	9744 C	9745 C	9746 C
8 Brights	blocks	fat 1/4 yard each		
	CS-10-Butternut Squash	CS-10-Guava Punch		
	CS-10-Lilac	CS-10-Papaya	CS-10-Passion	
	CS-10-Pear	CS-10-Sulfur	CS-10-Turquoise	
Binding		3/4 yard	*9737 C	
Backing		6 yards	**9738 C	

Cutting Directions

Note: Read assembly directions before cutting patches. All measurements are cut sizes and include 1/4" seam allowances. A fat 1/4 is an 18" x 20"-22" cut. WOF designates the width of fabric from selvedge to selvedge (approximately 42" wide).

Fabric A

Cut (216) squares 4 7/8" (OR 5") Read Step 1 before cutting

16 Gray

From each:
Cut (11) squares 4 7/8" (OR 5") Read Step 1 before cutting

8 Brights

From each:
Cut (6) squares 4 7/8" (OR 5") Read Step 1 before cutting

Binding

Cut (9) strips 2 1/2" x WOF for binding

Backing

Cut (2) panels 40" x 104", pieced to fit quilt top with overlap on all sides

Making the Quilt

- The quilt is made entirely with half-square triangles (HST) that finish 4" square. Use your favorite method to make HST, or follow these directions. Cut squares 5" for HST that will be trimmed after stitching. If you prefer not to trim, cut squares 4 7/8". Draw a diagonal line on the wrong side of 48 white squares (Diagram 1). Place a marked square on a bright square, right sides together. Sew 1/4" seam on each side of the marked line; cut apart on the marked line. Press open to make pieced HST. Make 12 HST with each bright fabric. Set aside.
- Likewise, draw a diagonal line on the wrong side of the remaining white squares. Following directions above, make HST with the white squares and gray squares (Diagram 2). You should have 22 of each combination. You will use 21 of each.

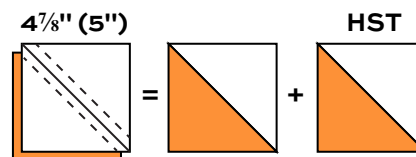


Diagram 1 – Make 12 of each bright.

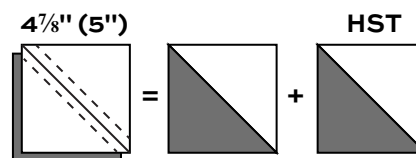


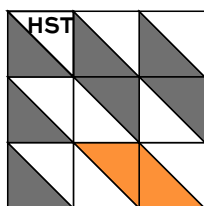
Diagram 2 – Make 21 of each gray.

- Referring to the quarter-block diagram, arrange 7 of the same gray/white HST and 2 of the same bright HST in 3 rows of 3 HST each. Note carefully the rotation and placement of the fabrics. Make 4 quarter-blocks for 1 block. Join the colors in combinations of your choice, or follow the Quilt Diagram for color placement. Arrange the 4 quarter-blocks to form a square, rotating them as shown so the bright HST form a pinwheel in the center. Be sure that each quarter block is different from the others. Join the quarter blocks to make the 24" block. Make 12 blocks. Note that you will have 1 gray HST leftover in each color way (16 total), enough to make a pillow to coordinate with the quilt.

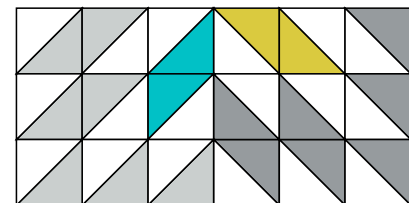
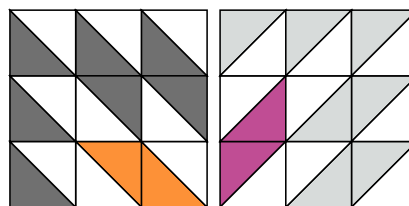
Desert Bloom Quilt



4. Refer to the Quilt Diagram. Arrange the blocks in 4 rows of 3 blocks each, separating the colors so the same print is not adjacent to itself. Looking through a camera or the wrong end of binoculars may help you make adjustments if needed. Once you are satisfied with the arrangement, join the blocks in rows, and then join the rows.



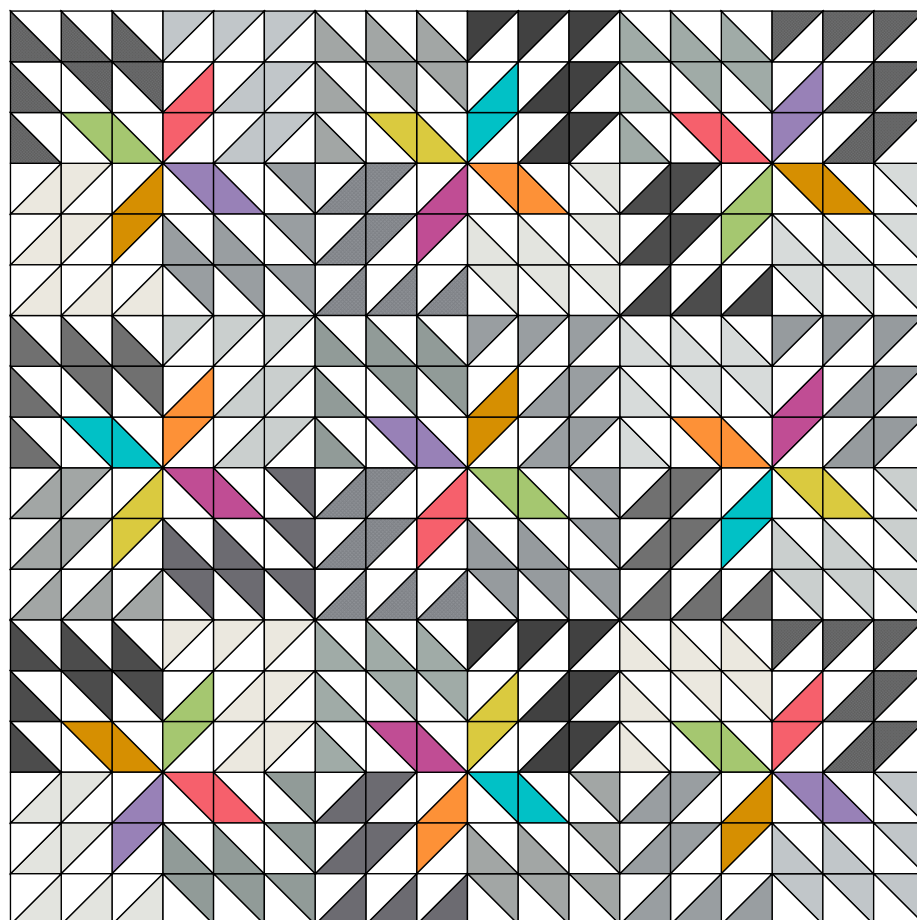
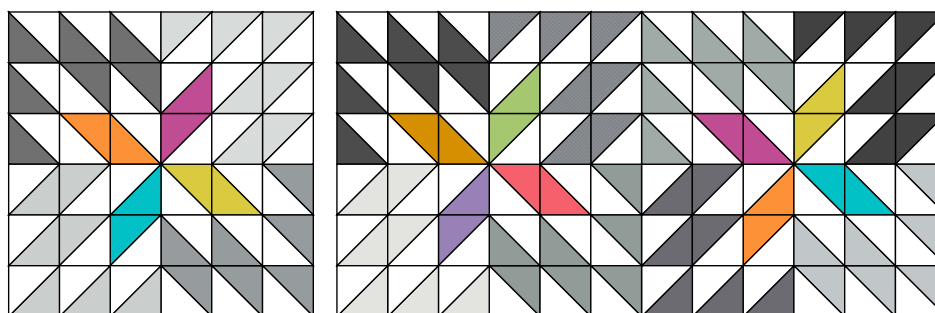
Quarter Block
Make 48



Block - Make 12

Finishing the Quilt

5. Layer the quilt with batting and backing and baste. Quilt in the ditch around block patches, or quilt an overall pattern. Bind to finish the quilt.



Quilt Diagram

River Rock

ANDOVER FABRICS

a
100
years



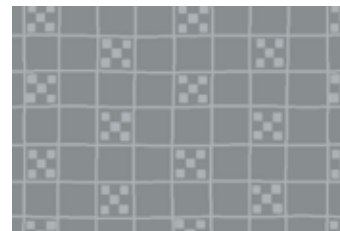
9731 C



9732 C



9733 C



9734 C



9735 C



9736 C



9737 C



9738 C



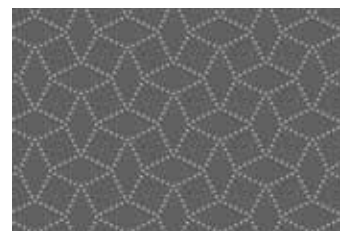
9739 C



9740 C



9741 C



9742 C



9743 C



9744 C



9745 C



9746 C

Additional fabric from Century Solids by Andover Fabrics



CS-10-ButternutSquash



CS-10-GuavaPunch



CS-10-Lilac



CS-10-Papaya



CS-10-Passion



CS-10-Pear



CS-10-Sulfur



CS-10-Turquoise



CS-10-Cottonball

All fabrics are used in quilt pattern. Fabrics shown are 100% of actual size.

andover

makower uk

Free Pattern Download Available

1384 Broadway New York, NY 10018
Tel. (800) 223-5678 • andoverfabrics.com

10/15/20