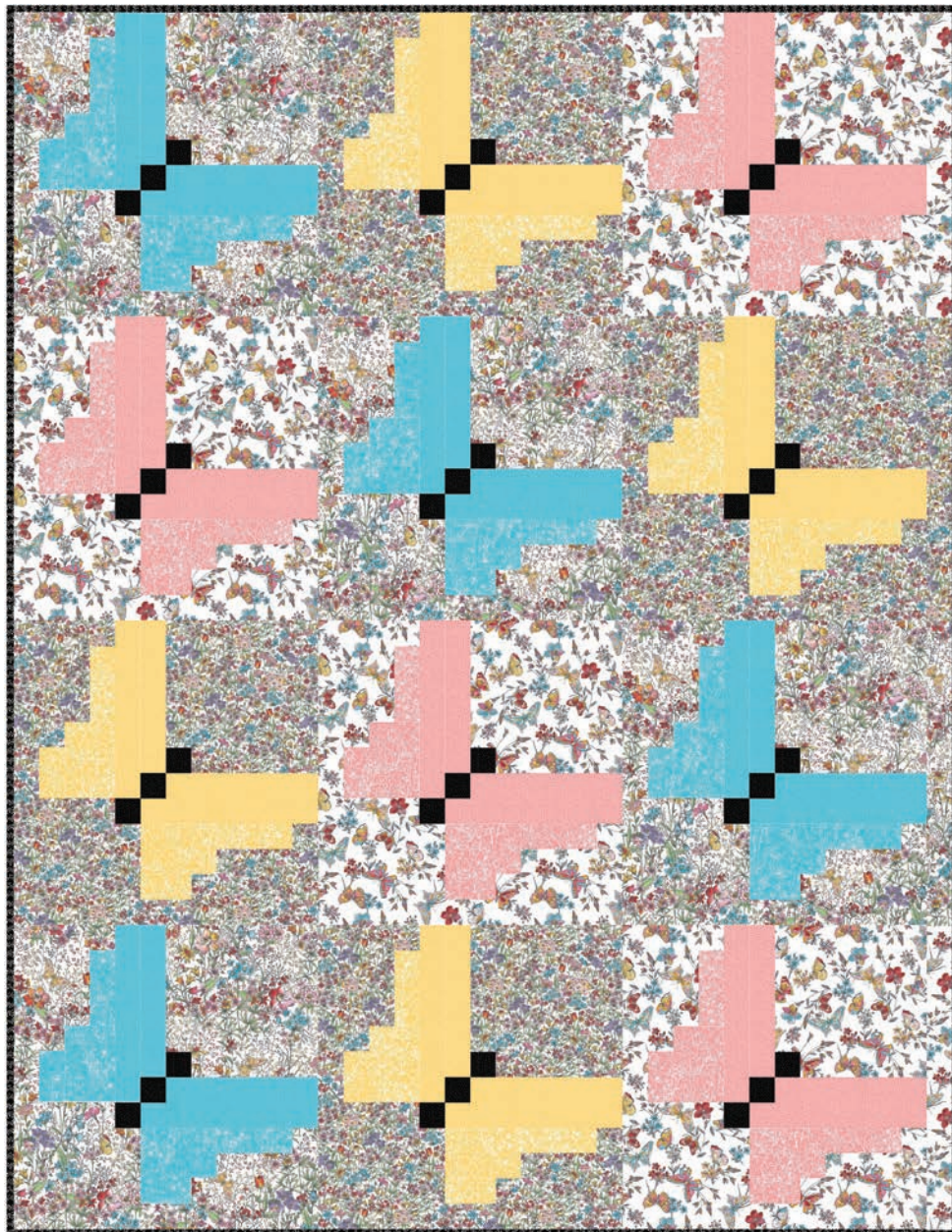


MAYWOOD  STUDIO

# *Meadow Edge Quilt*



**Meadow Edge Quilt by Maywood Studio**  
featuring the Meadow Edge Collection

56 x 75"

#madewithmaywood  
[maywoodstudio.com](http://maywoodstudio.com)







Fabric 1  
D10002-W



Fabric 2  
D10003-W



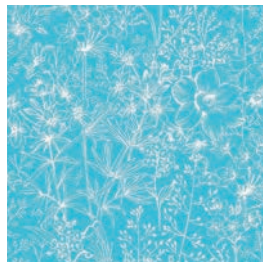
Fabric 3  
D10004-W



Fabric 4  
D10007-J



Fabric 5  
D10007-Q



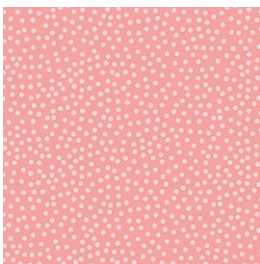
Fabric 6  
D10006-Q



Fabric 7  
D10007-S



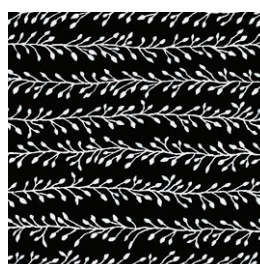
Fabric 8  
D10006-S



Fabric 9  
D10007-P



Fabric 10  
D10006-P

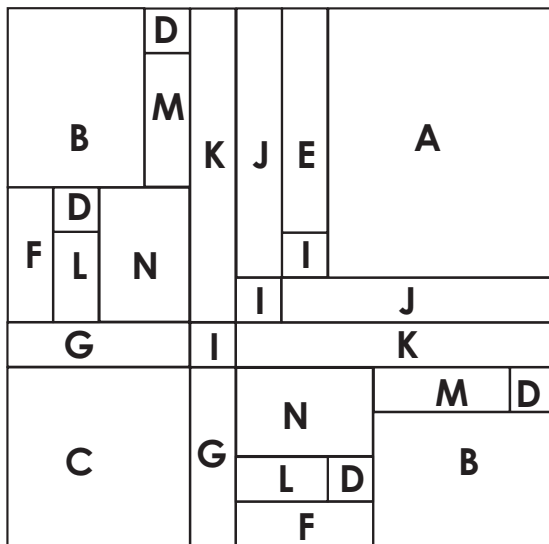


Fabric 11  
D10008-J

## Fabric Requirements

Fabric 1	D10002-W	7/8 yard
Fabric 2	D10003-W	7/8 yard
Fabric 3	D10004-W	1 yard
Fabric 4	D10007-J	1/8 yard
Fabric 5	D10007-Q	1/3 yard
Fabric 6	D10006-Q	1/4 yard
Fabric 7	D10007-S	1/3 yard
Fabric 8	D10006-S	1/4 yard
Fabric 9	D10007-P	1/3 yard
Fabric 10	D10006-P	1/4 yard
Fabric 11	D10008-J	5/8 yard
Backing	your choice	3-1/2 yards

WOF - Width of Fabric  
 LOF - Length of Fabric  
 RST - Right Sides Together  
 HST - Half Square Triangle



**Butterfly Blocks**  
 18-1/2" x 18-1/2"  
 (18" x 18" finished)

## Cutting

Finished Size 56" x 75"

Cut all fabrics in the order listed.

Fabrics 1, 2, 3,

Cut (1) 8-1/2" x WOF Strip.

A: Subcut into (4) 8" x 9-1/2" rectangles

Cut (2) 6-1/2" x WOF Strips. Subcut into:

B: (8) 5" x 6-1/2" rectangles

C: Cut (4) 6-1/2" x 6-1/2" squares  
 from the leftover cut

D: (16) 2" x 2" squares

Cut (3) 2" x WOF Strips

E: Subcut (1) strip into (4) 2" x 8" strips

F: Subcut (1) strip into (8) 2" x 5" rectangles

G: Subcut (2) strips into (8) 2" x 6-1/2"  
 rectangles

H: Sashing

Cut the following number of 2" x 18-1/2"  
 rectangles from the left over 2" strips:

(1) Fabric 1 rectangle

(1) Fabric 2 rectangle

(2) Fabric 3 rectangles

Fabric 4

Cut (2) 2" x WOF Strips

I: Subcut into (36) 2" x 2" squares

Fabrics 5, 7, 9

Cut (5) 2" x WOF strips

J: Subcut into (8) 2" x 9-1/2" rectangles

K: Subcut into (8) 2" x 11" rectangles

Fabrics 6, 8, 10

Cut (2) 2" x WOF strips. Subcut into:

L: (8) 2" x 3-1/2" rectangles

M: (8) 2" x 5" rectangles

Cut (1) 3-1/2" x WOF Strip

N: Subcut into (8) 3-1/2" x 5" rectangles

Fabric 11 Binding

Cut (7) 2-1/2" x WOF strips

## Meadow Edge Quilt Instructions

Please read all instructions before you begin. Seam allowance is 1/4" unless otherwise stated. Fabric is abbreviated as 'F'. For example, F1 refers to Fabric 1. Press in the direction of arrows.

### Butterfly Block Section 1 - Upper Wings

#### Blue Butterfly Block.

Gather the following pieces:

F1-A, F1-E, F4-I, F5-J, F5-K

1. Sew a F1-E rectangle to a F4-I square. Press toward F4-I.

2. Sew Step 1 unit to the F1-A rectangle. Press toward F1-A.

3. Sew a F5-J rectangle to the Step 2 unit. Press away from F5-J.

4. Sew a F5-J rectangle to a F4-I square. Press toward F4-I.

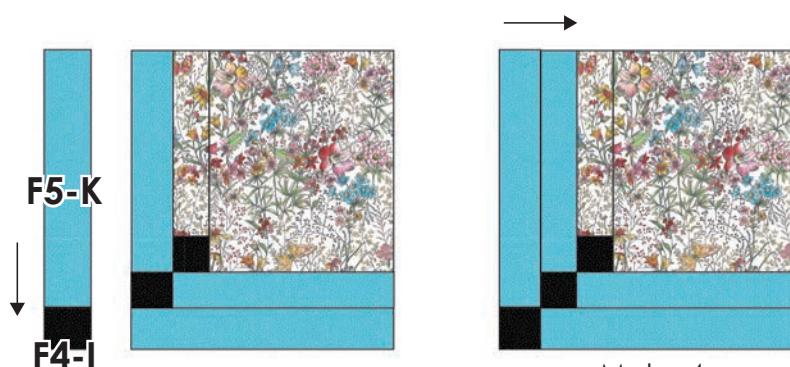
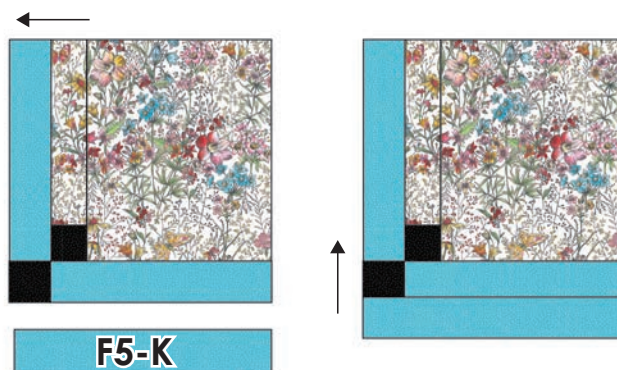
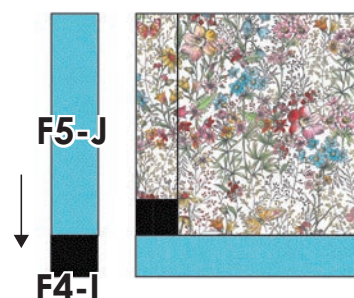
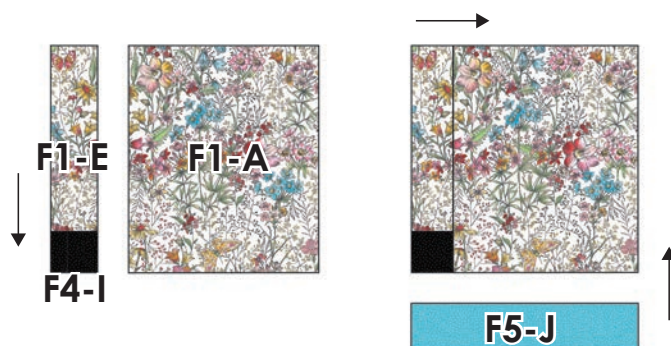
5. Sew the Step 4 unit to the block section. Press toward F5-J/F4-I.

6. Sew a F5-K rectangle to the Step 5 unit. Press away from F5-K.

7. Sew a F5-K rectangle to a F4-I square. Press toward F4-I.

8. Sew the Step 7 unit to the block section. Press the block. It measures 12-1/2" x 12-1/2".

Repeat steps 1-8 to make a total of 4 Upper Right Butterfly Sections with these fabrics.



Make 4  
12-1/2" x 12-1/2"



## Blue Butterfly Block

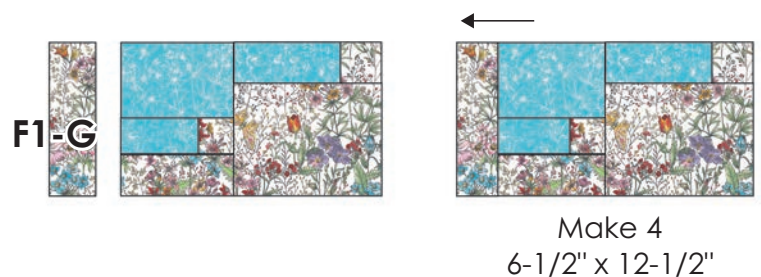
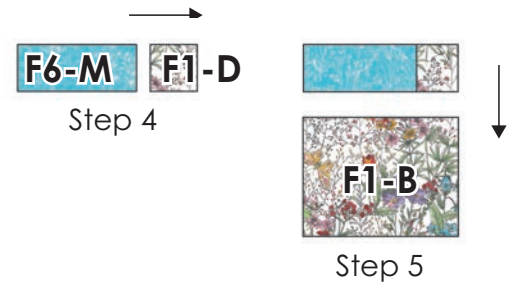
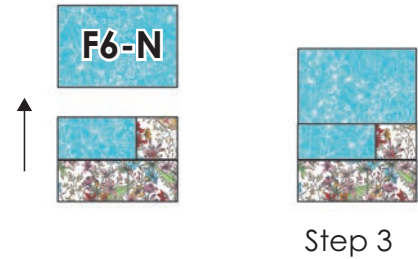
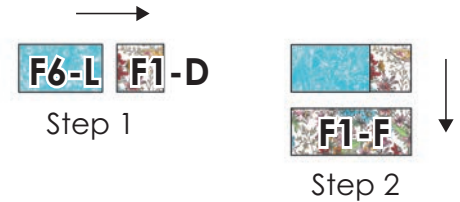
### Right Lower Wing Sections

Gather the following pieces:

F1-B, F1-D, F1-F, F1-G, F6-L, F6-M, F6-N

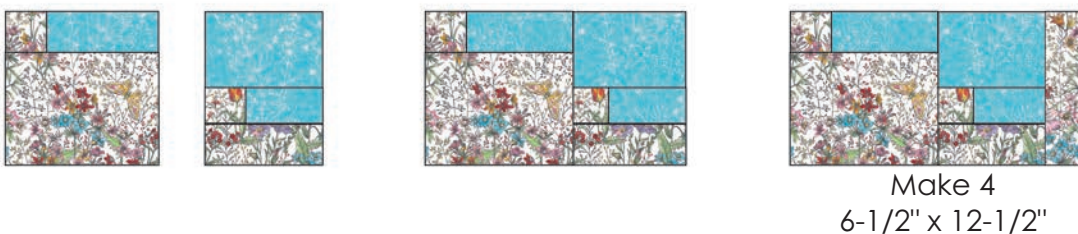
These sections are mirror image. Follow the illustration to make sure you are sewing the pieces to the correct sides.

1. Sew a F6-L rectangle to a F1-D square.  
Press toward F1-D.
2. Sew the Step 1 unit to a F1-F rectangle.  
Press toward F1-F.
3. Sew the Step 2 unit to the F6-N rectangle.  
Press toward F6-N.
4. Sew a F6-M rectangle to a F1-D square.  
Press toward F1-D.
5. Sew the Step 4 unit to the F1-B rectangle.  
Press toward F1-B.
6. Sew the Step 3 unit to the Step 5 Unit.  
Press toward the Step 5 Unit.
7. Sew a F1-G rectangle to the Step 6 unit.  
Press toward F1-G. Make 4.  
Section measures 6-1/2" x 12-1/2"



### Left Lower Wing Sections

Repeat steps 9-15 to make the left lower wing sections, reversing the orientation of the pieces as you sew them together. Follow the illustrations below for layout.



## Blue Butterfly Block - Put it all together

Gather the following pieces:

F1-C

1. Sew the lower left wing section to the upper wing section. Press.

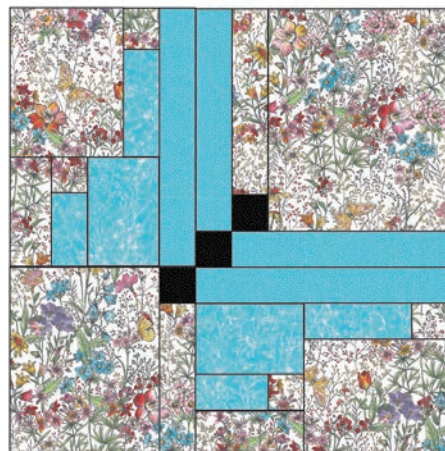
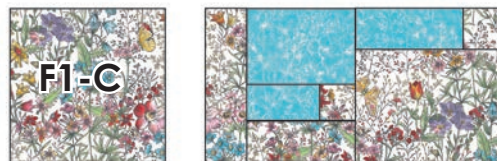
2. Sew the F1-C square to the lower right wing section. Press.

3. Sew the Step 17 unit to the Step 18 unit.

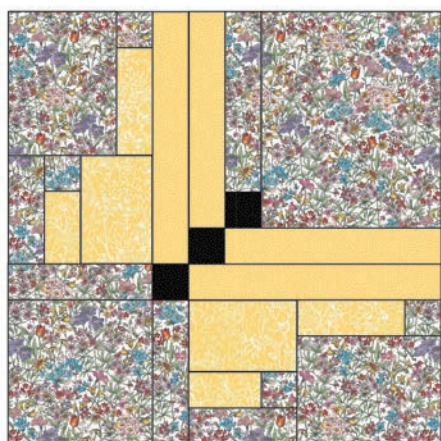
Press open.

Make 4. Block finishes at 18-1/2" x 18-1/2"

4. Repeat all steps 1-19 to make the pink and yellow butterfly blocks.



Make 4  
18-1/2" x 18-1/2"



Make 4  
18-1/2" x 18-1/2"



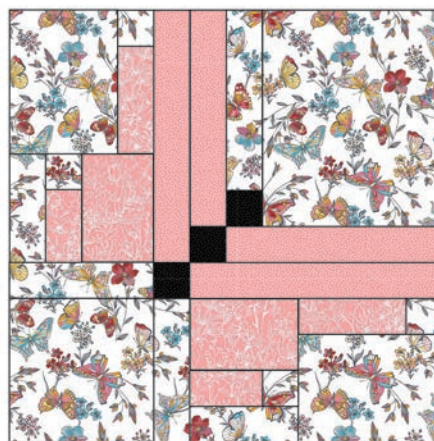
Fabric 2  
D10003-W



Fabric 7  
D10007-S



Fabric 8  
D10006-S



Make 4  
18-1/2" x 18-1/2"



Fabric 3  
D10004-W



Fabric 9  
D10007-P

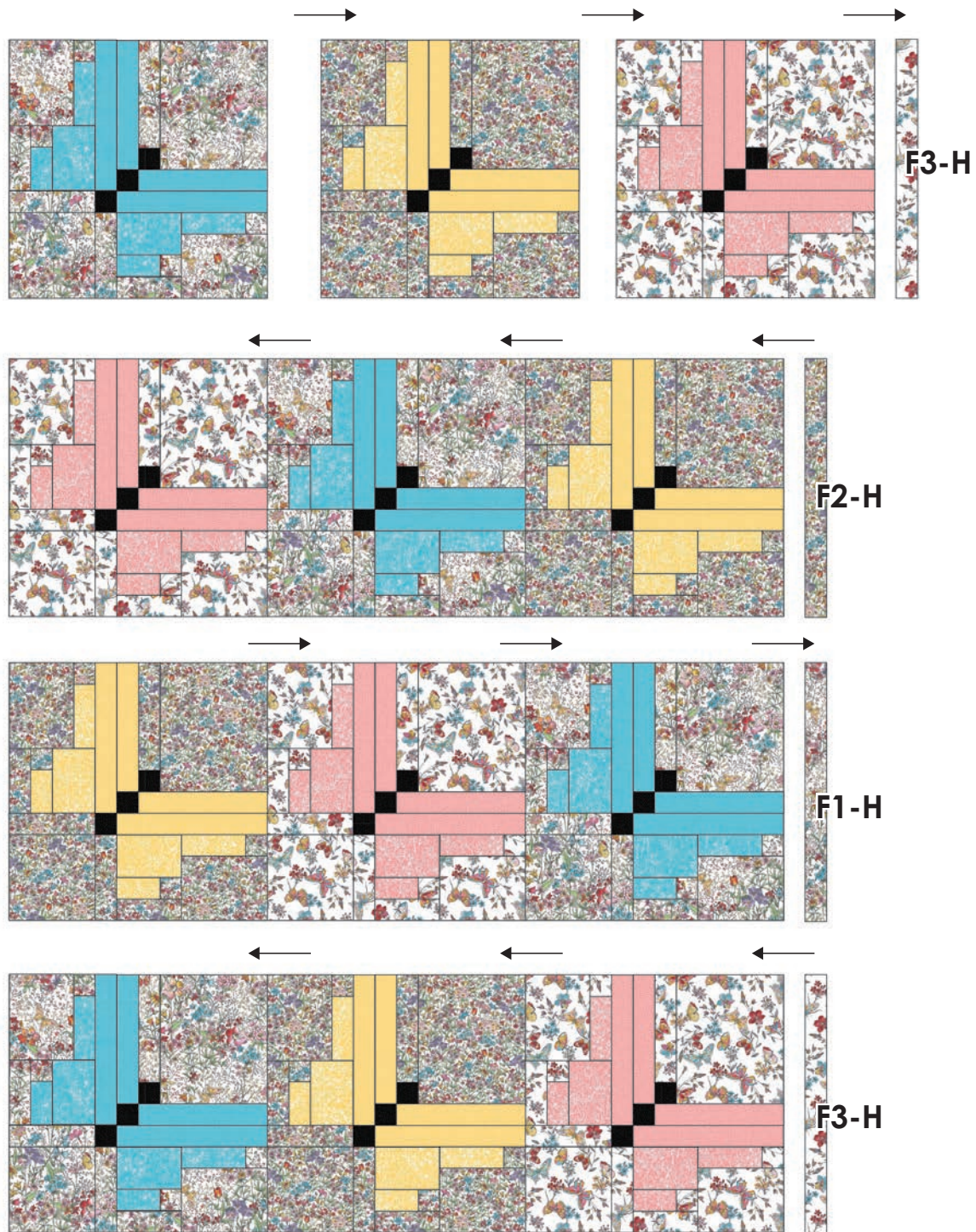


Fabric 10  
D10006-P



5. Sew the blocks into rows as illustrated below. Sew the 2" x 18-1/2" sashing strips to the ends of the rows matching the background fabric from the block. Press rows in opposite directions to nest the seams.

6. Sew row to row. Press in one direction.



7. Layer the backing (wrong side up), batting and quilt top (right side up). Baste layers to secure. Quilt as desired. Trim the excess backing and batting.

8. Sew the binding strips together into one continuous strip. Press in half length-wise. Sew the binding to the quilt top with a 3/8" seam allowance. Turn the binding to the back side of the quilt and stitch down by hand with matching thread.

## Meadow Edge Planning Diagram

