

Niwa

Quilt Design by Gina Gempesaw



Quilt size: approximately 62" x 80"



Featuring fabrics from
Niwa by P&B Textiles

P&B Textiles • pbtex.com • 800-351-9087 • 208 Clock Tower Square, Portsmouth, RI 02871

Niwa

Fabric collection by P&B Textiles

Quilt designed by Gina Gempesaw

Skill level: Advanced Beginner • Finished Quilt Size: approximately 62" x 80"

Quilt Yardages:

Fabric A: NIWA 4388 T	1 1/3 yards
Fabric B: NIWA 4386 K	1 yard
Fabric C: NIWA 4387 MU	1 yard
Fabric D: NIWA 4389 R	1 yard
Fabric E: NIWA 4388 LP	1 1/8 yards
Fabric F: SUED 300 K	1 1/2 yards
Backing: NIWA 4385 K suggested	4 1/2 yards
Batting	70" x 88"

Cutting Instructions:

Please read all instructions carefully before beginning. Strips are cut across the width of fabric (perpendicular to selvages) unless otherwise stated. All seams are sewn with a 1/4" seam unless otherwise stated. Label all pieces.

From Fabric A:

1. Cut three 10 1/4" strips. Sub cut nine 10 1/4" squares. Cut each square twice on the diagonal to make thirty-six triangles (A1). Use thirty-four triangles in the quilt and set aside two.
2. Cut four 3 1/8" strips. Sub cut forty-eight 3 1/8" squares. Cut each square once on the diagonal to make of ninety-six triangles (A2).

From Fabric B:

1. Cut four 6 7/8" strips. Sub cut eighteen 6 7/8" squares (B1).

From Fabric C:

1. Cut three 10 1/4" strips. Sub cut nine 10 1/4" squares. Cut each square twice on the diagonal to make thirty-six triangles (C1). Use thirty-four triangles in the quilt and set aside two.

From Fabric D:

1. Cut two 3 1/8" strips. Sub cut twenty-four 3 1/8" squares. Cut each square once on the diagonal to make forty-eight triangles (D1).
2. Cut seven 2" strips. Sew strips together into one strip.
 - a. Cut two 2" x 77 1/2" Border strips (D2).
 - b. Cut two 2" x 62 1/2" Border strips (D3).
3. Cut six 1 1/2" strips. Sew strips together into one strip.
 - a. Cut two 1 1/2" x 63 1/2" Border strips (D4).
 - b. Cut two 1 1/2" x 47 1/2" Border strips (D5).

From Fabric E:

1. Cut seven 5" strips. Sew strips together into one strip.
 - a. Cut two 5" x 68 1/2" Border strips (E1).
 - b. Cut two 5" x 59 1/2" Border strips (E2).

From Fabric F:

1. Cut six 2 3/4" strips. Sub cut seventy-two 2 3/4" squares (F1).
2. Cut six 2" strips. Sew strips together into one strip.
 - a. Cut two 2" x 65 1/2" Border strips (F2).
 - b. Cut two 2" x 50 1/2" Border strips (F3).
3. Cut eight 2 1/4" x WOF strips for binding (F4).

Piecing Instructions:

Block X

1. Layout two A1 and two C1 triangles as shown in Figure 1. Sew together to make one Block X that measures 9 1/2" square. Press. Make seventeen Block X.

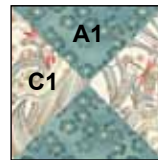


Figure 1
Make seventeen Block X.

Block Y

2. Layout two A2 triangles and one F1 square as shown in Figure 2. Sew together to make an A2-F1 triangle unit. Press. Make forty-eight A2-F1 units.



Figure 2
Make forty-eight A2/F1 units.

3. Layout four A2-F1 units and one B1 square as shown in Figure 3. Center and sew each A2-F1 unit to each side of the B1 square to make one Block Y that measures 9 1/2" square. Press. Make twelve Block Y.

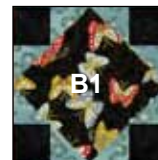


Figure 3
Make twelve Block Y.

Block Z

4. Layout two D1 triangles and one F1 square as shown in Figure 4. Sew together to make a D1-F1 triangle unit. Press. Make twenty-four D1-F1 units.



Figure 4
Make twenty-four D1/F1 units.

5. Layout four D1-F1 units and one B1 square as shown in Figure 5. Center and sew each D1-F1 unit to each side of the B1 square to make one Block Z that measures 9 1/2" square. Press. Make six Block Z.



Figure 5
Make six Block Z.

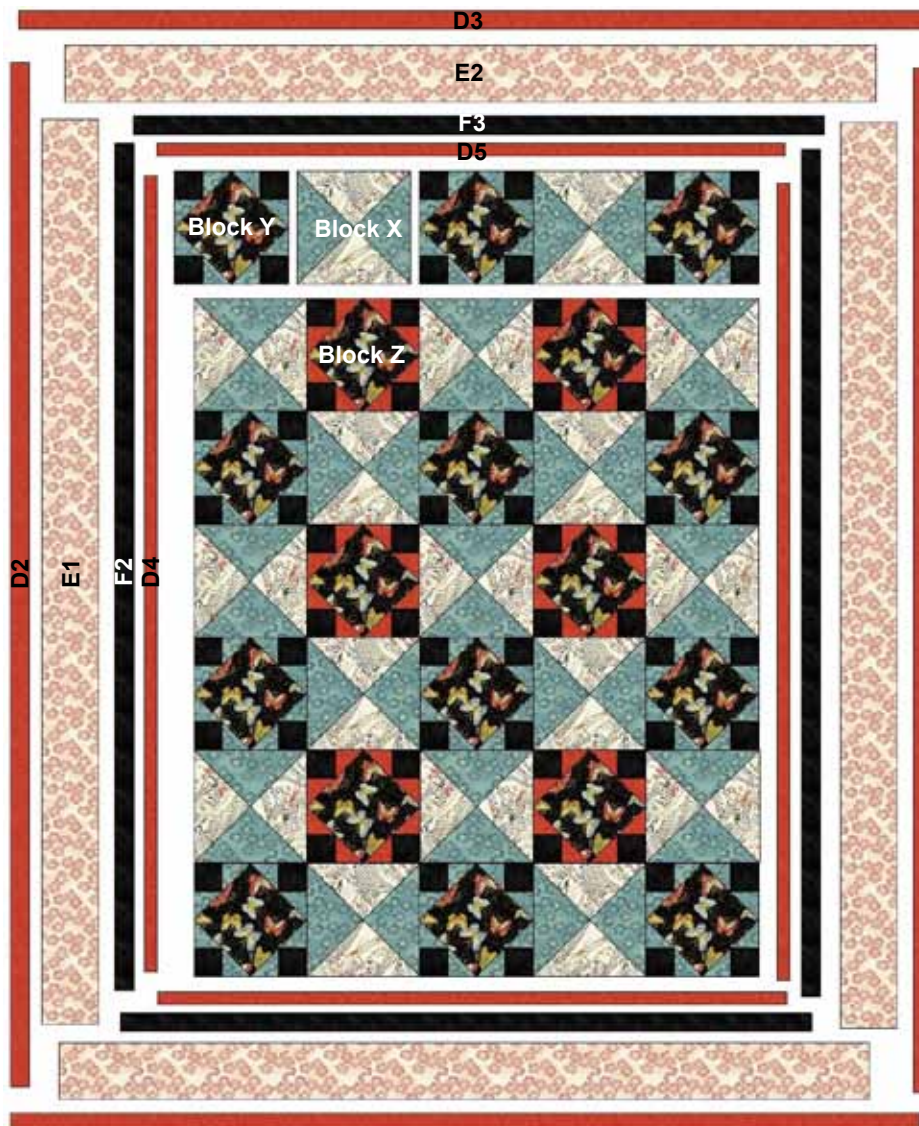
Quilt Assembly:

1. Layout seventeen Block X, twelve Block Y and six Block Z as shown in the Quilt Diagram. Rotate Block X as necessary.
2. Sew blocks within each row together. Press. Sew rows together to complete the center of the quilt. Press. It should measure 45 1/2" x 63 1/2".
3. **First Border:** Sew a D4 strip to each long side of the quilt. Press. Sew a D5 strip to the top and bottom. Press. The quilt should measure 47 1/2" x 65 1/2".
4. **Second Border:** Sew an F2 strip to each long side of the quilt. Press. Sew an F3 strip to the top and bottom. Press. The quilt should measure 50 1/2" x 68 1/2".
5. **Third Border:** Sew an E1 strip to each long side of the quilt. Press. Sew an E2 strip to the top and bottom. Press. The quilt should measure 59 1/2" x 77 1/2".

6. **Fourth Border:** Sew a D2 strip to each long side of the quilt. Press. Sew a D3 strip to the top and bottom. Press. The quilt should measure 62 1/2" x 80 1/2".

Finishing:

1. Prepare backing with one seam to measure 70" x 88". Press seam open.
2. Layer quilt top, batting, and backing. Baste layers together.
3. Quilt as desired.
4. Trim layers even with quilt top squaring corners.
5. Join 2 1/4" F4 binding strips with diagonal seams. Press seams open. Press strip in half lengthwise with wrong sides together to make double-fold binding. Attach binding to quilt using your favorite method.
6. Make a label and sew to the back of the quilt.



Quilt Diagram

Niwa

Fabric Collection by P&B Textiles



NIWA 4384 PA*



NIWA 4385 K†



NIWA 4386 K



NIWA 4385 MU



NIWA 4386 MU



NIWA 4387 K



NIWA 4387 MU



NIWA 4387 R*



NIWA 4388 AU



NIWA 4388 LB



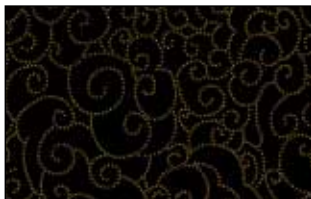
NIWA 4388 LP*



NIWA 4388 T*



NIWA 4389 E



NIWA 4389 K*



NIWA 4389 R



SUEM 300 BG*



P&B Textiles • pbtex.com • 800-351-9087 • 208 Clock Tower Square, Portsmouth, RI 02871

*Fabrics used in quilt.

†Backing