

Crème Fraiche

ANDOVER FABRICS



Buttermilk Quilt designed by: **Janet Houts** • Quilt Size: **56" x 64"**

Skill Level: **Advanced Beginner** • andoverfabrics.com

andover

•
•
• makower.uk
•

Free Pattern Download Available

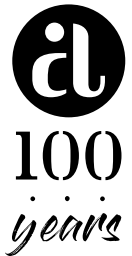
1384 Broadway New York, NY 10018
Tel. (800) 223-5678 • andoverfabrics.com

9/15/20

Buttermilk Quilt

Introducing Andover Fabrics new collection: CRÈME FRAICHE by Andover Fabrics

Quilt designed by Janet Houts



Quilt finishes 56" x 64"

28 Block Y: 8" x 8"

28 Block Z: 8" x 8"

The subtle palette is as comforting as a warm glass of milk, making this throw/twin comforter the perfect size to snuggle under. The two different blocks connect to form diagonal lines across the quilt, defying onlookers to find the block.

Cutting Directions

Note: Read assembly directions before cutting patches. All measurements are cut sizes and include 1/4" seam allowances. WOF designates the width of fabric from selvedge to selvedge (approximately 42" wide).

Cutting for 1 Block Y

1 Light/Cream:

Cut (4) squares 4 1/2"

1 Medium/Tan:

Cut (8) squares 2 1/2"

Cutting for 1 Block Z

1 Light/Cream:

Cut (4) rectangles 2 1/2" x 4 1/2"

Cut (1) square 4 1/2"

Cut (2) squares 2 7/8" (or 3") for HST (Read Step 2)

1 Medium/Tan:

Cut (4) squares 2 1/2"

Cut (2) squares 2 7/8" (or 3") for HST

Cutting for entire quilt

4 Lights

From each:

Cut patches for 4 Block Y

Cut patches for 4 Block Z

4 Creams

From each:

Cut patches for 3 Block Y

Cut patches for 3 Block Z

4 Mediums

From each:

Cut patches for 4 Block Y

Cut patches for 4 Block Z

4 Tans

From each:

Cut patches for 3 Block Y

Cut patches for 3 Block Z

Binding

Cut (7) strips 2 1/2" x WOF for binding

Backing

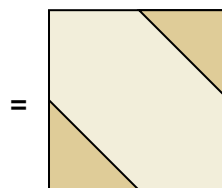
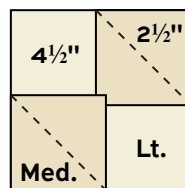
Cut (2) panels 36" x 64", pieced to fit quilt top with overlap on all sides

Fabric Requirements

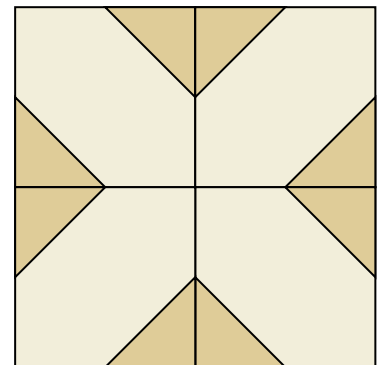
		Yardage	Fabric	
4 Lights	blocks	1/2 yard each		
	9732 N	**9733 N	9734 N	9738 N
4 Creams	blocks	1/2 yard each		
	9740 N	9741 N	9744 N	9745 N
4 Mediums	border	3/8 yard each		
	9731 N	9735 N	9736 N	*9739 N
4 Tans	blocks	3/8 yard each		
	9737 N	9742 N	9743 N	9746 N
Binding		1/2 yards	*9739 N	
Backing		3 3/4 yards	**9733 N	

Making the Quilt

- The Block Ys are made with quick stitch-and-flip piecing methods. Draw a diagonal line on the wrong side of 2 Medium/Tan 2 1/2" squares cut from the same print. Referring to Diagram 1, place a marked square on a Light/Cream 4 1/2" square, right sides together, aligning raw edges at the corner. Stitch on the drawn line; trim away and discard excess fabric. Press open. Repeat on the opposite corner, watching orientation of the sewing. Make 4 units like this for a block. Join the 4 units to make a Block Y, rotating the units as shown. Make 28 Block Y, using different combinations of prints as you wish.



Unit Y
Make 4 per block Y

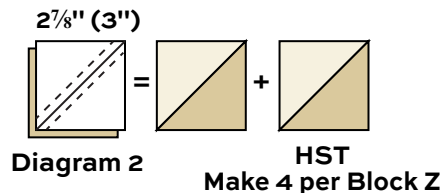


Block Y - Make 28

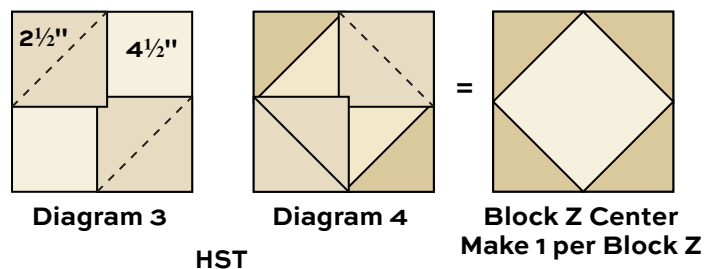
Buttermilk Quilt



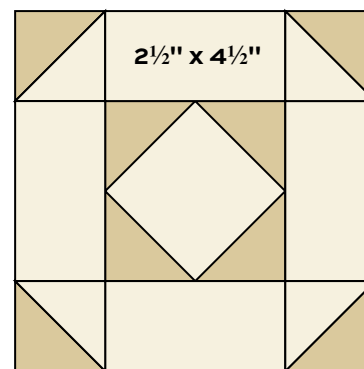
2. NOTE: For each Block Z, use one Medium/Tan and one Light/Cream print. You will need 28 combinations of prints. Block Z uses half-square triangle units (HST) that finish 2" square. Use your favorite method to make HST, or follow these directions. Cut squares 3" for HST that will be trimmed after stitching. If you prefer not to trim, cut squares $2\frac{7}{8}$ ". Draw a diagonal line on the wrong side of each Light/Cream 3" ($2\frac{7}{8}$ ") square (Diagram 2). Place a marked square on a Medium/Tan 3" ($2\frac{7}{8}$ ") square, right sides together. Sew $\frac{1}{4}$ " seam on each side of the marked line; cut apart on the marked line. Press open to make pieced HST. Make 4 HST alike for each Block Z. Make a total of 112 HST.



3. The center of each Block Z is made with quick stitch-and-flip piecing methods. Draw a diagonal line on the wrong side of 4 Medium/Tan $2\frac{1}{2}$ " squares. Referring to Diagram 3, place a marked square on a Light/Cream $4\frac{1}{2}$ " square, right sides together, aligning raw edges at the corner. Stitch on the drawn lines; trim away and discard excess fabric. Press open. Repeat on the opposite corner, watching orientation of the sewing. Repeat on the remaining corners (Diagram 4). Make a center that matches 4 HST for each block.



4. Referring to the Block Z diagram, arrange and join 4 HST, 4 Light/Cream rectangles, and the matching center unit to make a Block Z. Make 28 Block Z.

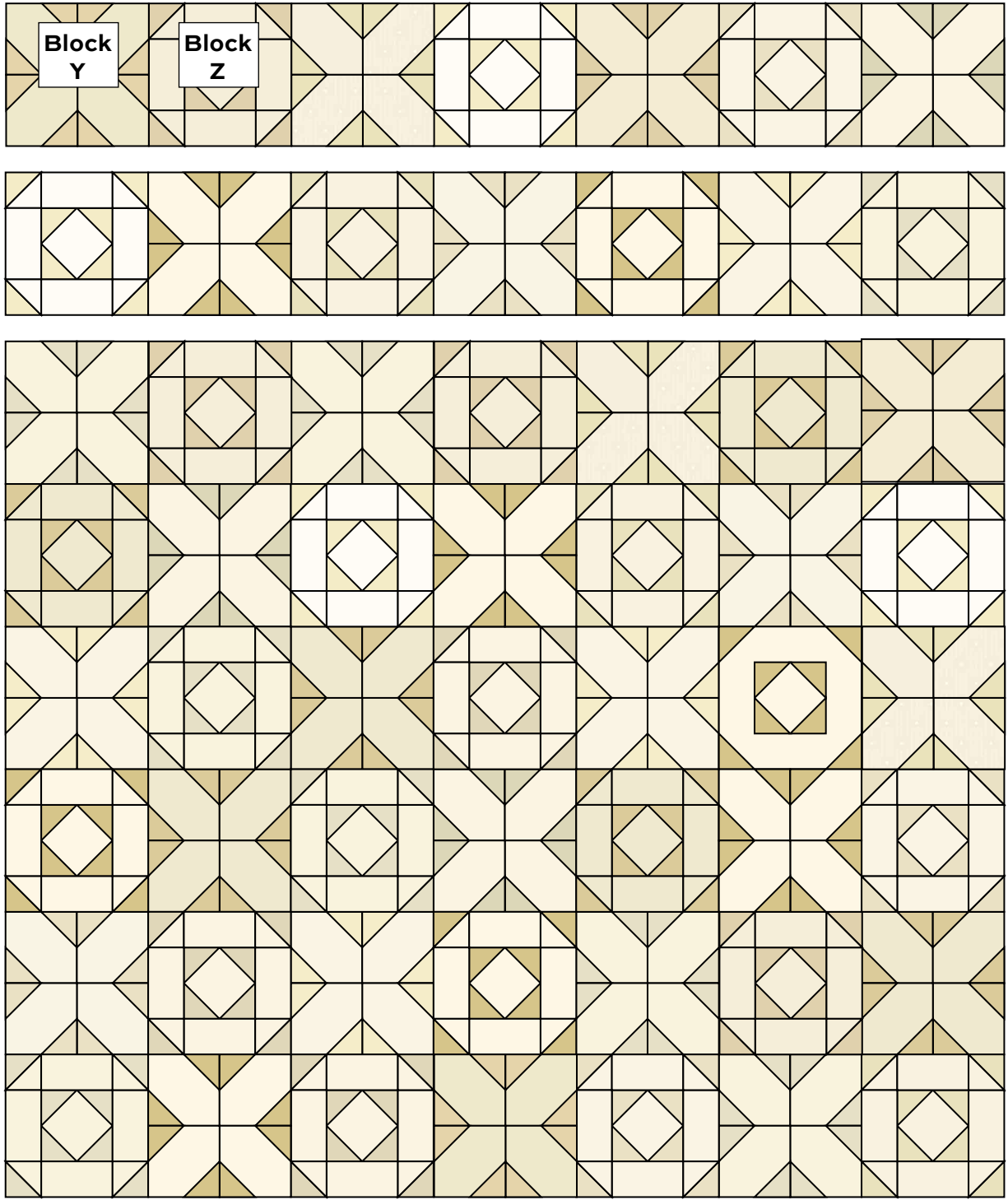


5. Using a design wall or large flat surface, arrange the blocks in 8 rows, with 7 blocks in each row. Note that odd-numbered rows have 4 Block Y and 3 Block Z. Even-numbered rows have 4 Block Z and 3 Block Y. Shift the blocks so that the same print is not in adjacent blocks. Once you are satisfied, join the blocks into rows, and join the rows.

Block Z - Make 28

Finishing the Quilt

6. Layer the quilt with batting and backing and baste. Quilt in the ditch around block patches. Quilt a motif of your choice in the Block Y light patches. Bind to finish the quilt.



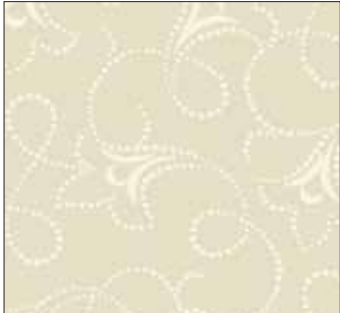
Quilt Diagram

Crème Fraiche

ANDOVER FABRICS



100
years



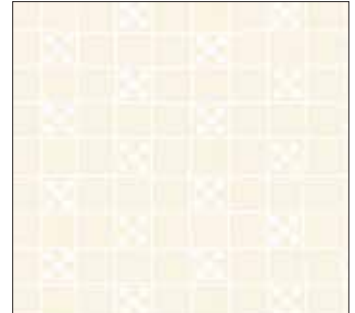
9731 N



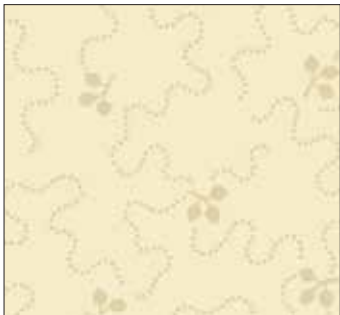
9732 N



9733 N



9734 N



9735 N



9736 N



9737 N



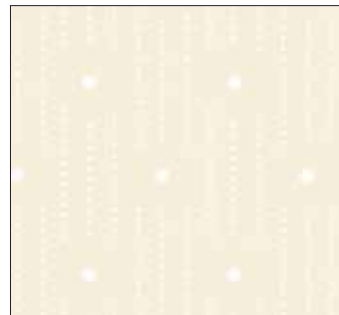
9738 N



9739 N



9740 N



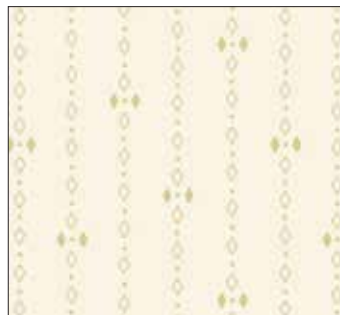
9741 N



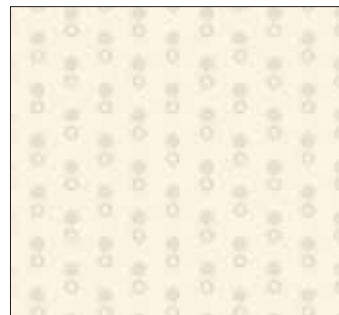
9742 N



9743 N



9744 N



9745 N



9746 N

All fabrics are used in quilt pattern. Fabrics shown are 100% of actual size.

andover



[makower uk](http://makower.uk)

Free Pattern Download Available

1384 Broadway New York, NY 10018
Tel. (800) 223-5678 • andoverfabrics.com

9/15/20