

free pattern

Wooly Winter Cabins



- BY CHERYL HAYNES
- FINISHED SIZE: 33" X 33"
- PATTERN AVAILABLE IN MARCH/APRIL 2021
AT WWW.BENARTEX.COM



**A Very
Woolly Winter**

by Cheryl Haynes of Prairie Grove Peddler

Wooly Winter Cabins

Finished size is 33" x 33"



Materials needed:

5/8 yard of 10356-07 Cream border

1/8 yard of 10359-55 Midnight (#15)

1/8 yard of 9615-44 Green (#14)

1/8 yard of 9615-07 Cream (#13)

1/8 yard of 9615-19 Berry (#12)

1/8 yard of 10358-52 Denim (#11)

1/8 yard of 10360-10 Red (#10)

1/8 yard of 10359-52 Denim (#9)

1/4 yard - 10358-10 Red sashing

1/8 yard of 10356-12 Black (#8)

1/8 yard of 10358-07 Cream (#7)

1/8 yard of 9615-55 Midnight (#6)

1/8 yard of 10360-44 Green (#5)

1/8 yard of 10358-40 Lt Green (#4)

1/8 yard of 10361-10 Red (#3)

1/8 yard of 10358-12 Black (#2)

1/8 yard of 10361-07 Cream (#1)

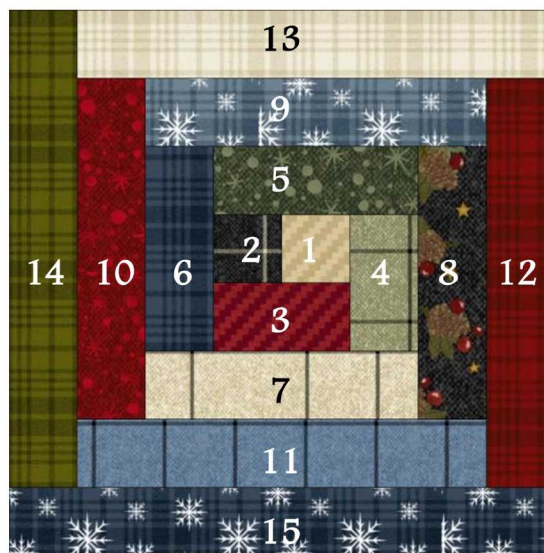
Designed by Cheryl Haynes of the Prairie Grove Peddler
for Benartex shown using A Very Woolly Winter fabric line.

www.prairiegrovepeddler.com

Cutting directions:

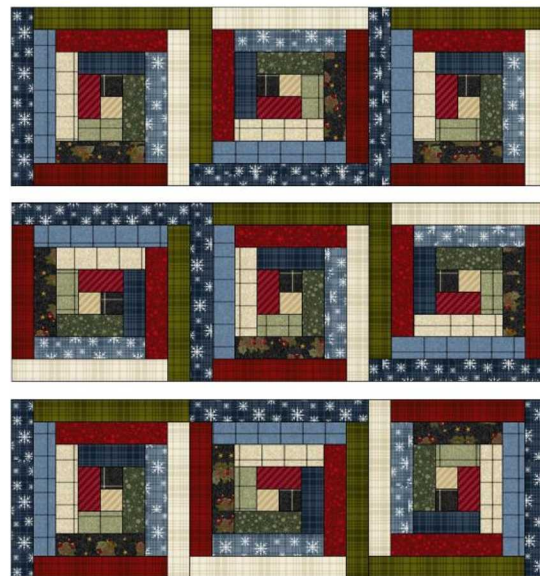
Each log cabin block (Make 9 identical)

- 9 1-1/2" x 8-1/2" (blue #15)
- 9 1-1/2" x 7-1/2" (green #14)
- 9 1-1/2" x 7-1/2" (cream #13)
- 9 1-1/2" x 6-1/2" (red #12)
- 9 1-1/2" x 6-1/2" (blue #11)
- 9 1-1/2" x 5-1/2" (red #10)
- 9 1-1/2" x 5-1/2" (blue #9)
- 9 1-1/2" x 4-1/2" (black #8)
- 9 1-1/2" x 4-1/2" (cream #7)
- 9 1-1/2" x 3-1/2" (dk. blue #6)
- 9 1-1/2" x 3-1/2" (green #5)
- 9 1-1/2" x 2-1/2" (lt. green #4)
- 9 1-1/2" x 2-1/2" (red #3)
- 9 1-1/2" x 1-1/2" (black #2)
- 9 1-1/2" x 1-1/2" (cream #1)



Log Cabin Block Assembly:

1. With right sides together, sew the 1-1/2" black and tan center squares together.
2. Press all of the seams as you sew.
3. Sew the 1-1/2" x 2-1/2" red strip across the bottom.
4. Sew the 1-1/2" x 2-1/2" green strip down the right side.
5. Sew the 1-1/2" x 3-1/2" green strip across the top.
6. Sew the 1-1/2" x 3-1/2" blue strip down the left side.
7. Sew the 1-1/2" x 4-1/2" cream strip across the bottom.
8. Sew the 1-1/2" x 4-1/2" black strip down the right side.
9. Sew the 1-1/2" x 5-1/2" blue strip across the top.
10. Sew the 1-1/2" x 5-1/2" red strip down the left side.
11. Sew the 1-1/2" x 6-1/2" blue strip across the bottom.
12. Sew the 1-1/2" x 6-1/2" red strip down the right side.
13. Sew the 1-1/2" x 7-1/2" cream strip across the top.
14. Sew the 1-1/2" x 7-1/2" green strip down the left side.
15. Sew the 1-1/2" x 8-1/2" blue strip across the bottom.
16. Make a total of nine blocks the same way.
17. Lay out the blocks into three rows of three blocks each.
18. Sew each row across then line up and sew the three rows together.
19. Sew a 1-1/2" x WOF red sashing strip down each side and trim off the excess on the ends.
20. Sew a 1-1/2" x WOF red sashing strip across the top and bottom. Trim the excess fabric.
21. Sew a 3-1/2" x WOF border strip down each side and trim off the excess on the ends.
22. Sew a 3-1/2" x WOF border strip across the top and bottom. Trim the excess fabric.
23. Lay the pieced top on a layer of quilt batting and your backing fabric and quilt.
24. Sew the three 2-1/4" strips of border fabric end to end for the binding.
25. Trim one of the border strip scraps to 2-1/4" and add to the binding strip.
26. Fold in half lengthwise with right sides out and press flat.
27. Pin the binding strip around the edge with the raw edges toward the outside edge.
28. Sew the binding face down to the top and miter each corner.
29. Overlap the ends. Fold over to the back and pin in place. Hand-stitch to the back.

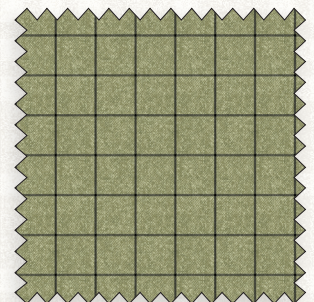
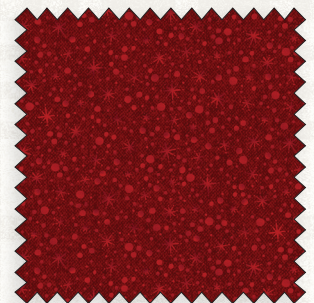
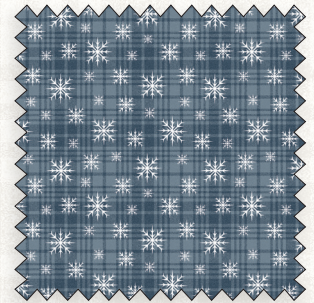




Wooly Winter Cabins By Cheryl Haynes

33" x 33"

SKU	Description	1 KIT	12 KITS	24 KITS
9615-09	Wooly Plaid - White	1/8 yd	1.5 yds 1 Bolt	3 yds 1 Bolt
9615-19	Wooly Plaid - Berry	1/8 yd	1.5 yds 1 Bolt	3 yds 1 Bolt
9615-44	Wool Plaid - Green	1/8 yd	1.5 yds 1 Bolt	3 yds 1 Bolt
9615-55	Wool Plaid - <i>Midnight</i>	1/8 yd	1.5 yds 1 Bolt	3 yds 1 Bolt
10356-07	Pine Berries - Cream INCLUDES BINDING	5/8 yd	7.5 yds 1 Bolt	15 yds 1 Bolt
10356-12	Pine Berries - Black	1/8 yd	1.5 yds 1 Bolt	3 yds 1 Bolt
10358-07	Wooly Window - Cream	1/8 yd	1.5 yds 1 Bolt	3 yds 1 Bolt
10358-10	Wooly Window - Red	1/4 yd	3 yds 1 Bolt	6 yds 1 Bolt
10358-12	Wooly Window - Black	1/8 yd	1.5 yds 1 Bolt	3 yds 1 Bolt
10358-40	Wooly Window - Lt Green	1/8 yd	1.5 yds 1 Bolt	3 yds 1 Bolt
10358-52	Wooly Window - Denim	1/8 yd	1.5 yds 1 Bolt	3 yds 1 Bolt
10359-52	Wooly Snowflake Plaid - Denim	1/8 yd	1.5 yds 1 Bolt	3 yds 1 Bolt
10359-55	Wooly Snowflake Plaid - <i>Midnight</i>	1/8 yd	1.5 yds 1 Bolt	3 yds 1 Bolt
10360-10	Wooly Snowball - Red	1/8 yd	1.5 yds 1 Bolt	3 yds 1 Bolt
10360-44	Wooly Snowball - Green	1/8 yd	1.5 yds 1 Bolt	3 yds 1 Bolt



- THIS CHART IS A GENERAL GUIDE FOR PURCHASING YARDAGE AND IS NOT INTENDED TO BE USED FOR CUTTING KITS.
- PLEASE VISIT BENARTEX.COM FOR THE FINAL TESTED PATTERN BEFORE CUTTING KITS.
- THE QUILT SHOWN IS A DIGITAL REPRESENTATION. ACTUAL FABRIC REPEATS WILL VARY FROM DESIGN SHOWN.