



Celestial Journey Unicorn Quilt



Featuring the Celestial Journey Collection by Josephine Wall
Shipping to stores Jan. 2021!

Finished Size: 37 1/2" x 47 1/2" (95.25cm x 120.65cm)

Fabric Needed

3 Wishes Fabric® Celestial Journey Collection

- 1 Panel – Unicorn Panel (17138-MLT-CTN-D)
- 3/4 yd – Night Flight (17137-PUR-CTN-D)
- 5/8 yd – Fiery Sky (17133-MLT-CTN-D) for Piecing and Binding
- 1/4 yd – Feather (17135-MLT-CTN-D)
- 1/8 yd – Landscape (17136-GRN-CTN-D)
- 1 1/2 yds – Celestial Unicorn (17131-NVY-CTN-D) for Backing - Directional

Additional Supplies Needed:

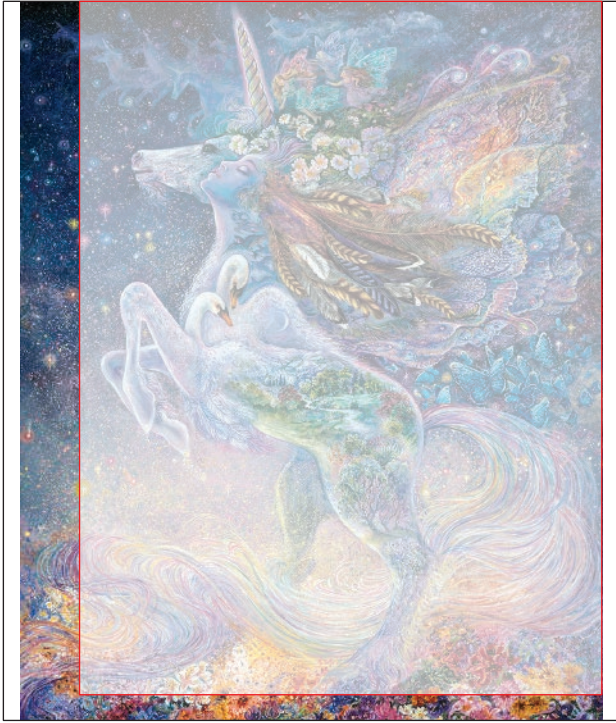
- 42" x 54" (106.68cm x 137.16cm) Cotton batting
- Piecing and sewing thread
- Quilting and sewing supplies
- Even-feed foot (optional for quilting)
- Square up ruler (optional)

Before You Begin

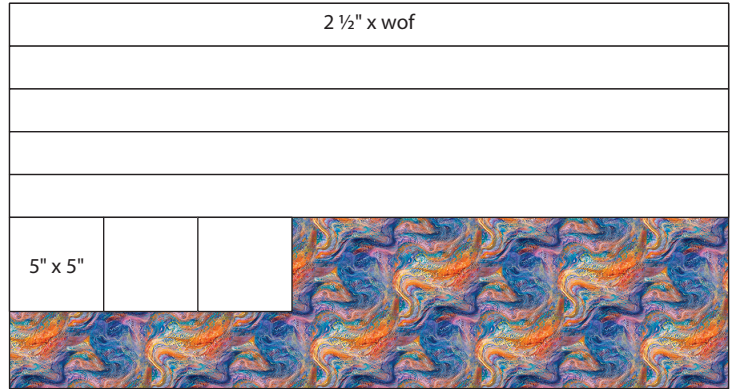
Read all instructions before beginning project. Do not pre-wash fabrics. Press fabrics with a dry iron on cotton setting before cutting. Use a ¼" (6.35mm) seam allowance and sew fabrics with right sides together (RST) unless otherwise noted. Press seams in the direction of the arrows. wof = width of fabric

Cutting

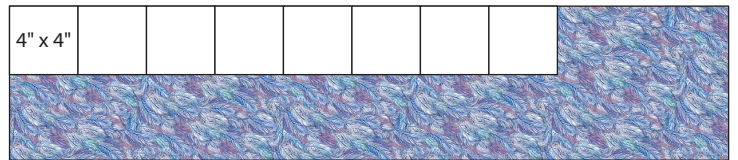
Use a rotary cutter and acrylic ruler to cut the number of pieces from each fabric listed below.



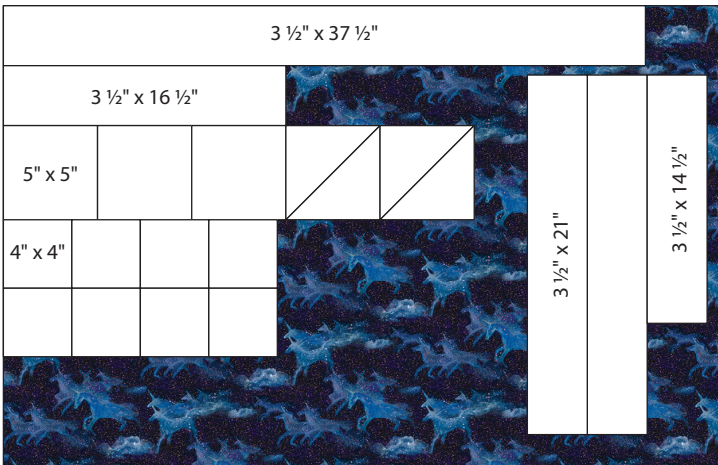
Unicorn Panel (17138-MLT-CTN-D) 1 Panel
Fussy Cut 1 - 30 ½" x 40 ½" (77.47cm x 102.87cm)



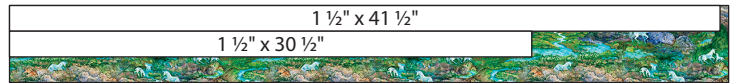
Fiery Sky (17133-MLT-CTN-D) ½ Yard
Cut 5 - 2 ½" (6.35cm) x wof - Binding
Cut 3 - 5" x 5" (12.7cm x 12.7cm)



Feather (17135-MLT-CTN-D) ¼ Yard
Cut 8 - 4" x 4" (10.16cm x 10.16cm)



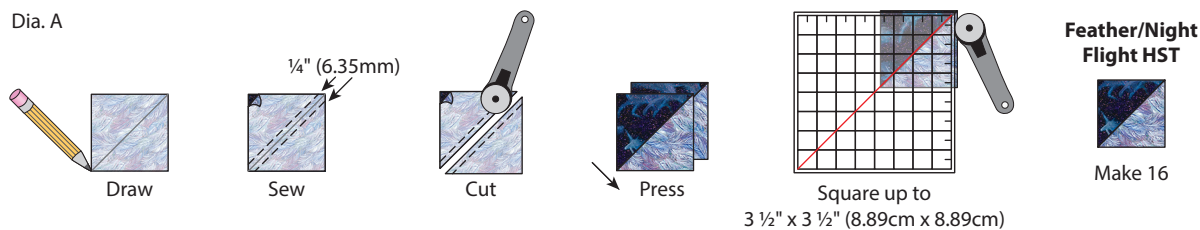
Night Flight (17137-PUR-CTN-D) ¾ Yard
Cut 1 - 3 ½" x 37 ½" (8.89cm x 95.25cm) **Note: Fabric direction**
Cut 2 - 3 ½" x 21" (8.89cm x 53.34cm) **Note: Fabric direction**
Cut 1 - 3 ½" x 14 ½" (8.89cm x 36.83cm) **Note: Fabric direction**
Cut 1 - 3 ½" x 16 ½" (8.89cm x 41.91cm) **Note: Fabric direction**
Cut 3 - 5" x 5" (12.7cm x 12.7cm)
Cut 2 - 5" x 5" (12.7cm x 12.7cm); Subcut 2 each on diagonal
Cut 8 - 4" x 4" (10.16cm x 10.16cm)



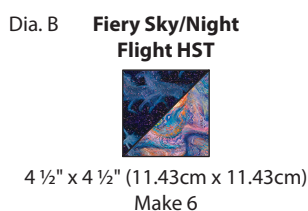
Landscape (17136-GRN-CTN-D) ½ Yard
Cut 1 - 1 ½" x 41 ½" (3.81cm x 105.41cm)
Cut 1 - 1 ½" x 30 ½" (3.81cm x 77.47cm)

Sewing

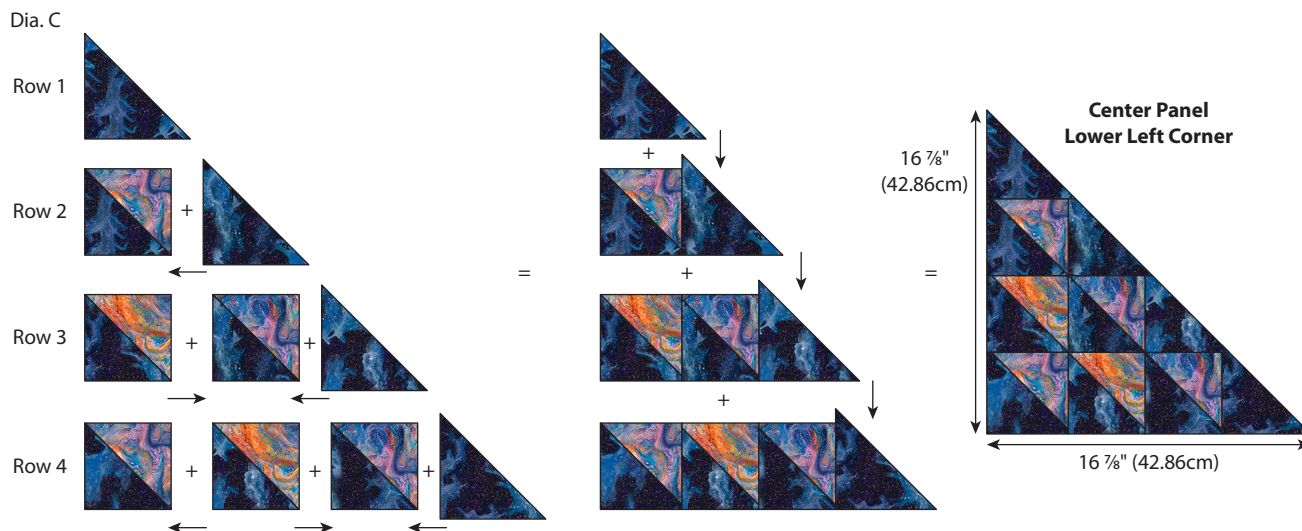
1. Refer to Diagram A to make the Half-Square Triangle (HST) Units. **Note:** Two squares yield two HST Units. Draw a diagonal line on the **wrong** side of a Feather square 4" x 4" (10.16cm x 10.16cm). Place a Feather square on top of a Night Flight square 4" x 4" (10.16cm x 10.16cm) with RST and sew $\frac{1}{4}$ " (6.35mm) away from the line on both sides. Cut on the drawn line; press. Repeat to make a total of 16 Feather/Night Flight HST Units $3\frac{1}{2}$ " x $3\frac{1}{2}$ " (8.89cm x 8.89cm). Square up and trim if necessary.



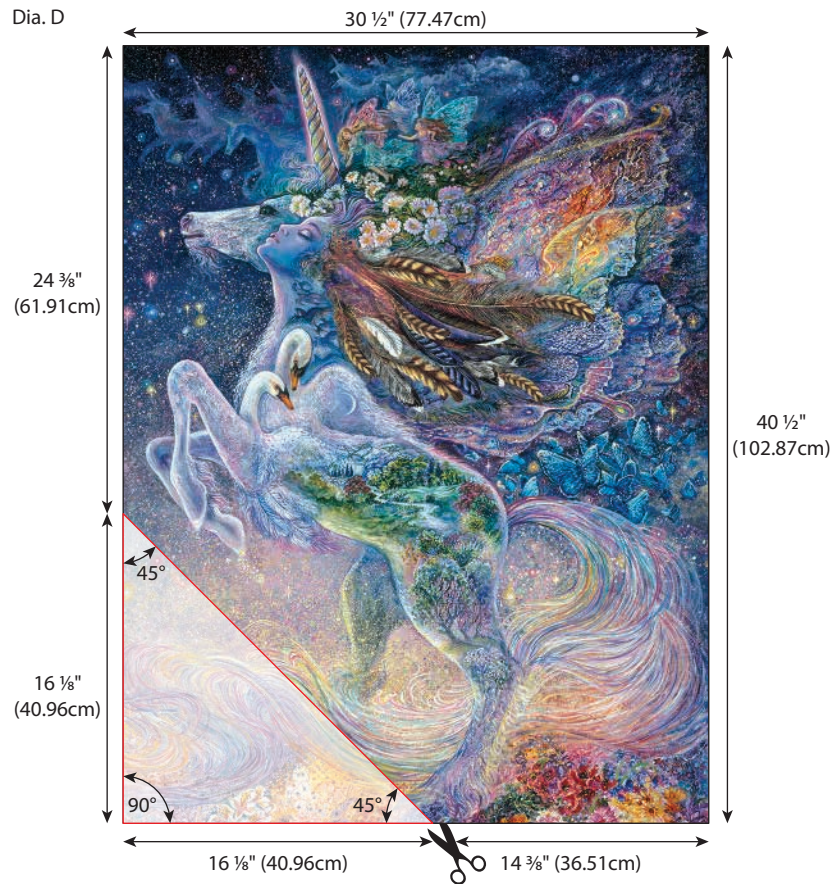
2. Follow Step 1 and Diagram B, using three Fiery Sky and three Night Flight squares 5" x 5" (12.7cm x 12.7cm) to make six Fiery Sky/Night Flight HST Units $4\frac{1}{2}$ " x $4\frac{1}{2}$ " (11.43cm x 11.43cm).



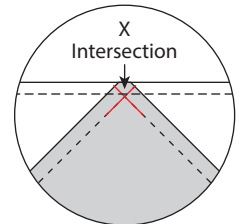
3. Place the six Fiery Sky/Night Flight HST $4\frac{1}{2}$ " x $4\frac{1}{2}$ " (11.43cm x 11.43cm) and the four Night Sky triangles ($5\frac{1}{2}$ "/12.7cm Short Side) in four rows as shown in Diagram C. Pin the pieces in each row RST and sew; press. Pin the rows RST matching the seams, sew and press to make the Center Panel Lower Left Corner ($16\frac{7}{8}$ "/42.86cm Short Side). Trim dog ears on Long Side.



4. Follow Diagram D to trim a $16 \frac{1}{8}$ " (40.96cm) Short Side triangle from the bottom left corner of the Fussy Cut Unicorn Panel $30 \frac{1}{2}$ " x $40 \frac{1}{2}$ " (77.47cm x 102.87cm).



5. Fold the diagonal lower left corner of the Fussy Cut Unicorn Panel in half and press the edge gently to form a small crease. With RST, place the Center Panel Lower Left Corner on top of the Unicorn Panel, matching centers and allowing $\frac{1}{4}$ " (6.35mm) of the triangle corners to extend over the sides of the Panel, as shown in Diagram E. Pin, matching centers and ends. Sew and press to make the Center Panel $30 \frac{1}{2}$ " x $40 \frac{1}{2}$ " (77.47cm x 102.87cm). **Note:** Pin well, sew and press carefully to avoid stretching the bias edges.

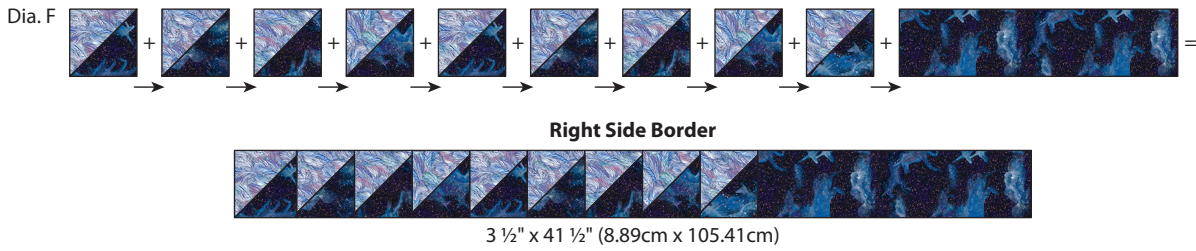


Tip: Keep sharp triangle points by pinning and sewing just above the "X" intersection.

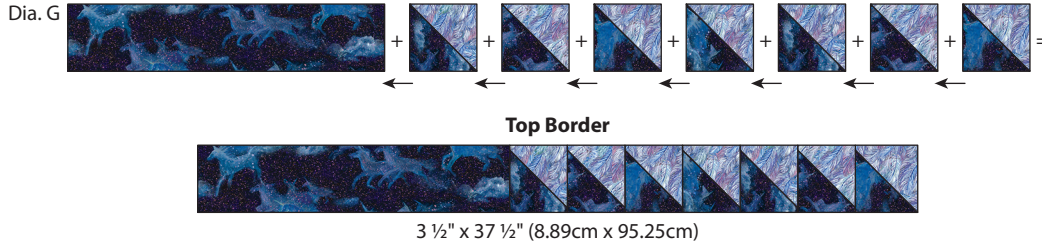
Dia. E



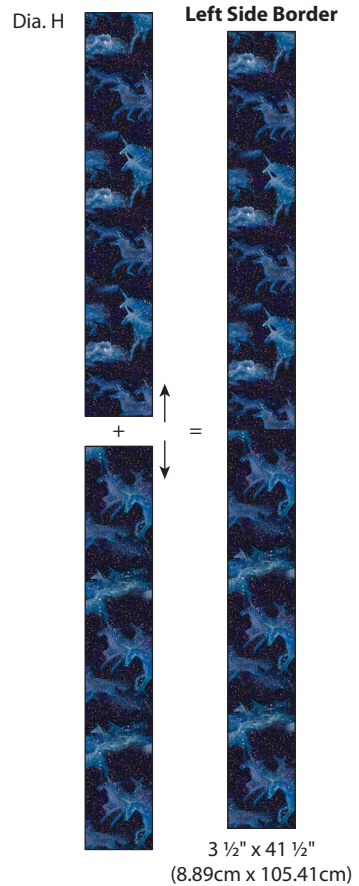
6. Place nine Feather/Night Sky HST $3\frac{1}{2}'' \times 3\frac{1}{2}''$ (8.89cm x 8.89cm) and the Night Sky rectangle $3\frac{1}{2}'' \times 14\frac{1}{2}''$ (8.89cm x 36.83cm) as shown in Diagram F. **Note:** Check orientation of fabrics. Pin RST, sew and press to make the Right Side Border $3\frac{1}{2}'' \times 41\frac{1}{2}''$ (8.89cm x 105.41cm).



7. Place the Night Sky rectangle $3\frac{1}{2}'' \times 16\frac{1}{2}''$ (8.89cm x 41.91cm) and seven Feather/Night Sky HST $3\frac{1}{2}'' \times 3\frac{1}{2}''$ (8.89cm x 8.89cm) as shown in Diagram G. **Note:** Check orientation of fabrics. Pin RST, sew and press to make the Top Border $3\frac{1}{2}'' \times 37\frac{1}{2}''$ (8.89cm x 95.25cm).



8. Place the two Night Sky rectangles $3\frac{1}{2}'' \times 21''$ (8.89cm x 53.34cm) as shown in Diagram H. **Note:** Check orientation of fabrics. Pin RST on the short ends, sew and press to make the Left Side Border $3\frac{1}{2}'' \times 41\frac{1}{2}''$ (8.89cm x 105.41cm).



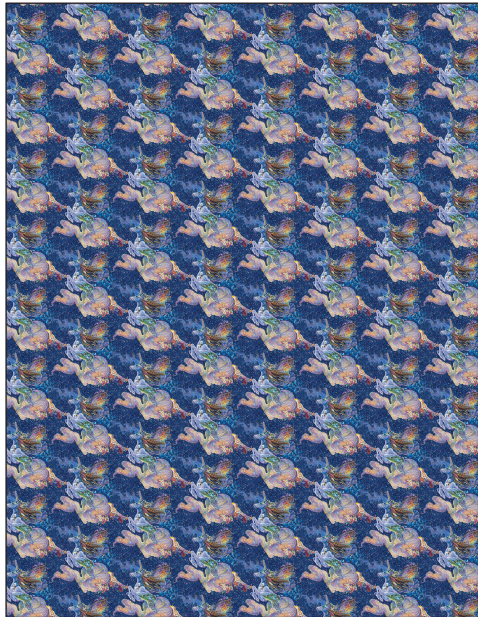
9. Place the Borders, as shown in Diagram I, in the following order, matching centers and ends. Pin RST, sew and press. The finished Quilt Top should measure $37\frac{1}{2}'' \times 47\frac{1}{2}''$ (95.25cm x 120.65cm).
- Bottom - Landscape rectangle $1\frac{1}{2}'' \times 30\frac{1}{2}''$ (3.81cm x 77.47cm).
 - Left Side - Landscape rectangle $1\frac{1}{2}'' \times 41\frac{1}{2}''$ (3.81cm x 105.41cm).
 - Left Side - Left Side Border $3\frac{1}{2}'' \times 41\frac{1}{2}''$ (8.89cm x 105.41cm).
 - Right Side - Right Side Border $3\frac{1}{2}'' \times 41\frac{1}{2}''$ (8.89cm x 105.41cm).
 - Top - Top Border $3\frac{1}{2}'' \times 37\frac{1}{2}''$ (8.89cm x 95.25cm).
 - Bottom - Night Sky rectangle $3\frac{1}{2}'' \times 37\frac{1}{2}''$ (8.89cm x 95.25cm). **Note:** Check orientation of fabrics.



Finishing

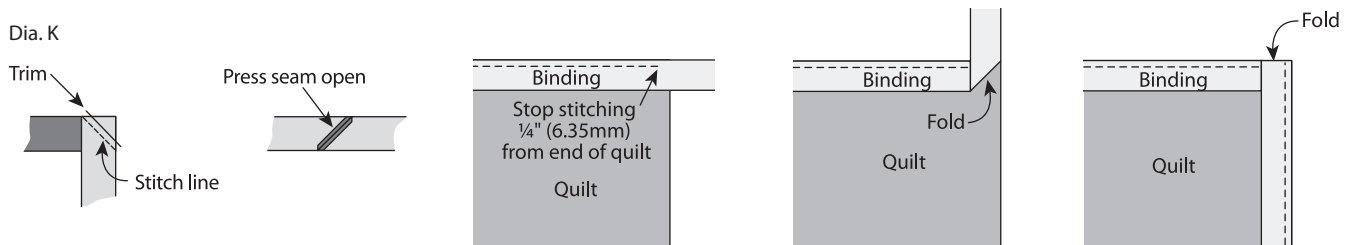
10. The Celestial Unicorn Backing is enough to cover the length and width of the top. If using a long arm machine to quilt, extra fabric basted onto Backing edges may be necessary.

Dia. J



Celestial Unicorn (17131-NVY-CTN-D) 1½ Yards
42" x 54" (106.68cm x 137.16cm) *Note: Fabric direction*

9. Press finished Quilt Top and Backing. Tape the Backing, **wrong** side up, to a firm surface. Layer Batting and Quilt Top (right side up). Baste the layers together with safety pins. Quilt as desired.
10. Once quilting is complete, square up corners and edges, trimming excess Backing and Batting even with the Quilt Top.
11. **Binding** – Follow Diagram K to make the Fiery Sky Binding. Remove selvages and sew the short ends of the five 2 ½" (6.35cm) x wof strips RST end to end at a 45° angle to make one continuous strip; press seams open. Press one short end ¼" (6.35mm) to the **wrong** side. Fold in half lengthwise with **wrong** sides together; press. Leaving a 2" (5.08cm) tail on the folded end, place cut edges of folded Binding even with the edge of the Quilt Top and sew, mitering the corners. Overlap ends, trim any excess and finish sewing the Binding. Fold Binding over to back and hand stitch.



Finished Care Instructions

Machine wash in cold water; gentle cycle. Do not bleach. **Tip:** Before drying, check for fabric dyes that may have run. If fabric dyes run, rewash and rinse using a color catcher to absorb loose dye. Lay flat to dry or tumble dry low.