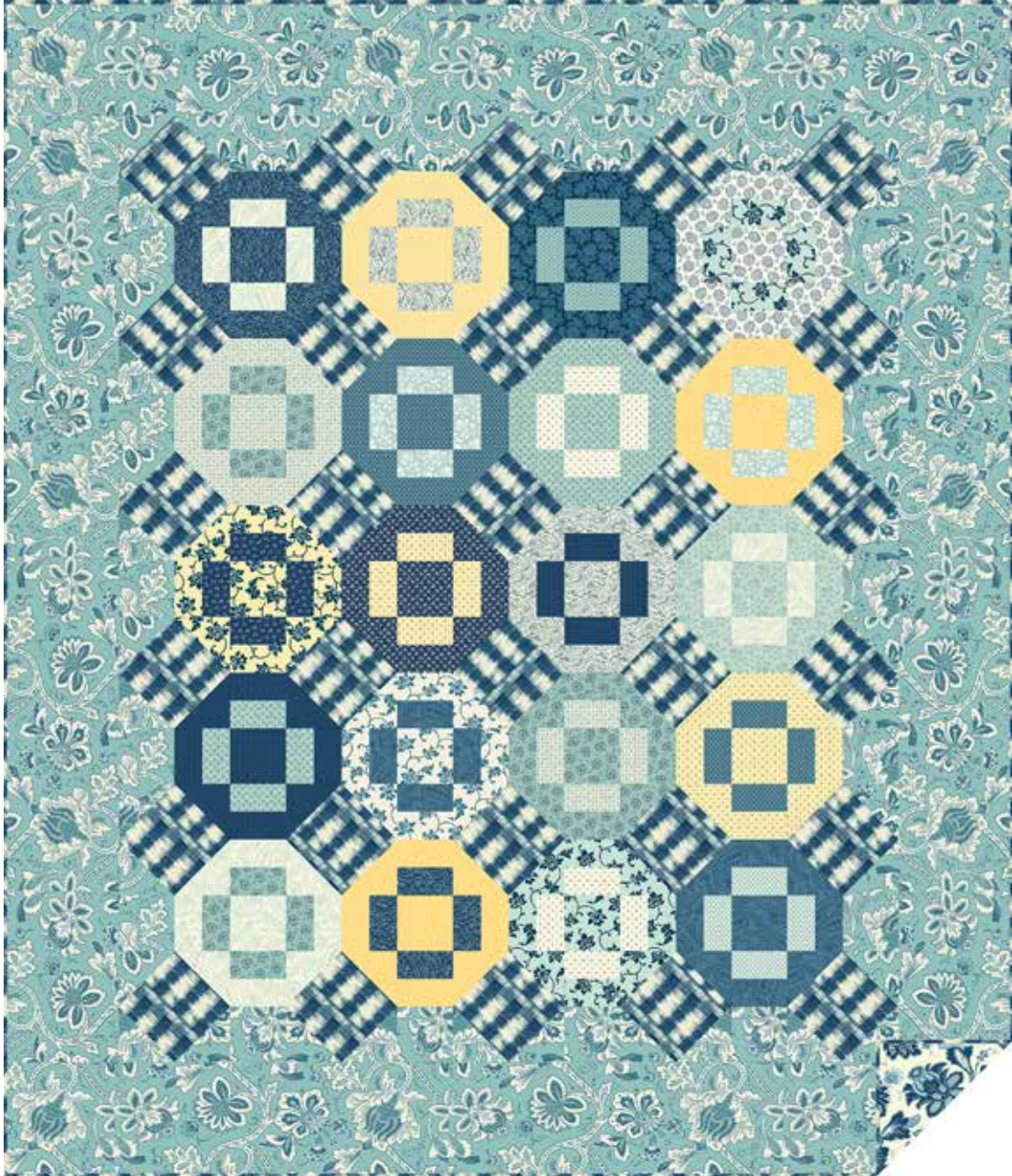


Annabella

RENÉE NANNEMAN



100
years



Annabella Quilt designed by: **Renée Nanneman** • Quilt Size: **72" x 84"**
Skill Level: **Intermediate** • andoverfabrics.com

andover

•
•
• makower.uk
•

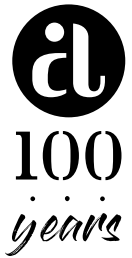
Free Pattern Download Available

1384 Broadway New York, NY 10018
Tel. (800) 223-5678 • andoverfabrics.com

Annabella Quilt

Introducing Andover Fabrics new collection: ANNABELLA by Renée Nanneman

Quilt designed by Renée Nanneman



Quilt finishes 72" x 84"

30 Blocks: 8" x 8"

This complex design (where is the block?) is actually a snap to make with simple blocks and sashes that require no set-in seams. The fabric collection includes a variety of types—lovely botanicals and paisleys, tiny posies and geometrics, and a bold check that looks like a hand-dyed ikat. What fun you will have planning the placement of the fabrics.

Cutting Directions

Note: Read assembly directions before cutting patches. All measurements are cut sizes and include ¼" seam allowances. A fat ¼ is an 18" x 20"-22" cut. Borders are cut the exact lengths required plus ¼" seam allowances. WOF designates the width of fabric from selvedge to selvedge (approximately 42" wide).

For one Color Unit

Bright Print #1:

Cut (4) rectangles 2½" x 4½"

Cut (2) squares 4⅞" x 4⅞" (or 5"), cut in half diagonally to make 4 half-square triangles (Read Step 2 before cutting)

Cut (1) square 4½" x 4½"

Bright Print #2:

Cut (4) rectangles 2½" x 4½"

Fabric A

Cut (2) top/bottom borders 8½" x 72½", cut lengthwise

Cut (2) side borders 8½" x 68½", cut lengthwise

Cut (20) squares 4⅞" x 4⅞" (or 5"), cut in half diagonally to make 40 half-square triangles (Read Step 2 before cutting)

Cut (18) squares 4½" x 4½"

Fabric B

Cut (30) squares 6⅛" x 6⅛"

24 Brights From each:

Cut patches as needed and as listed above
(Read Steps 1 and 2 before cutting)

Binding

Cut (8) strips 2½" by WOF for binding or cut bias strips if desired

Backing

Cut (2) panels 40" x 92", pieced vertically to fit quilt top with overlap on all sides

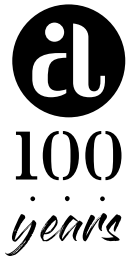
Fabric Requirements

	Yardage	Fabric		
Fabric A	border, set	2¾ yards	9716 T	
*Fabric B	set	1 yard	9722 B	
24 Brights	blocks, set	fat ¼ yard each		
	9717 L	9717 T	9717 Y	9718 B
	9718 T	9718 T1	9719 L	9719 T
	9720 L	9720 T	9721 B	9721 L
	9723 B	9723 L	9723 T	9724 L
	9724 T	9724 T1	9725 L	9725 Y
	9726 B	9726 Y	9727 B	9727 Y
*Binding		¾ yard	9722 B	
Backing		5¼ yards	9716 B	

Making the Quilt

1. Although you might think you know what the block is in this quilt, you might be surprised by the answer. Be sure to follow these directions exactly to make the quilt the easiest possible way. These directions avoid any set-in seams. The 20 units that look like blocks can be made with any combination of light and dark prints, or you can follow the quilt photograph if you wish to make the quilt exactly as shown.
2. The block is made with triangles stitched to each corner of a center square. If you wish to give yourself a bit of insurance, cut bright squares 5" x 5" that are cut in half diagonally for the corner triangles. The block will be trimmed later. If your stitching is precise and you wish to avoid trimming, then cut the bright squares 4⅞".

Annabella Quilt



3. Use a design wall or large flat surface. Referring to the Color Unit (Diagram 1), cut the patches for 20 Color Units. Note that some of the units have lighter rectangles surrounded by darker patches, and some have darker rectangles surrounded by lighter patches. Some units have high contrast, and others have little contrast between the rectangles and surrounding patches. Feel free to experiment with various combinations. Do not stitch these patches together.

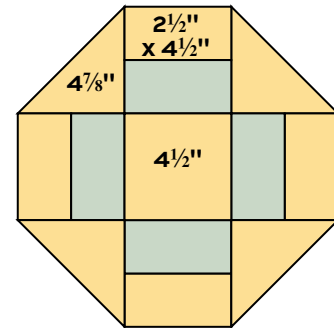


Diagram 1 – Color Unit Design 20 (Do not sew)

4. Position the patches for 20 Color Units on the design wall until you are satisfied with the arrangement (Diagram 2). Add Fabric B squares in between the units. Add Fabric A triangles and squares around the outer edges as shown.

5. To stitch the parts together without set-in seams, follow these directions. Beginning with the top left corner, remove the B square and the surrounding 4 triangles (3 are Fabric A). In Diagram 2, this block is outlined in purple. Sew the triangles to the B square to make a block. Trim the block to 8 1/2" square if needed, being careful to center the ruler so there is equal seam allowance on all sides. Reposition the block on the design wall to be certain the fabrics are positioned correctly.

Note that you will make a total of 30 blocks, some with Fabric A corner triangles, and some with 4 different corner triangles.

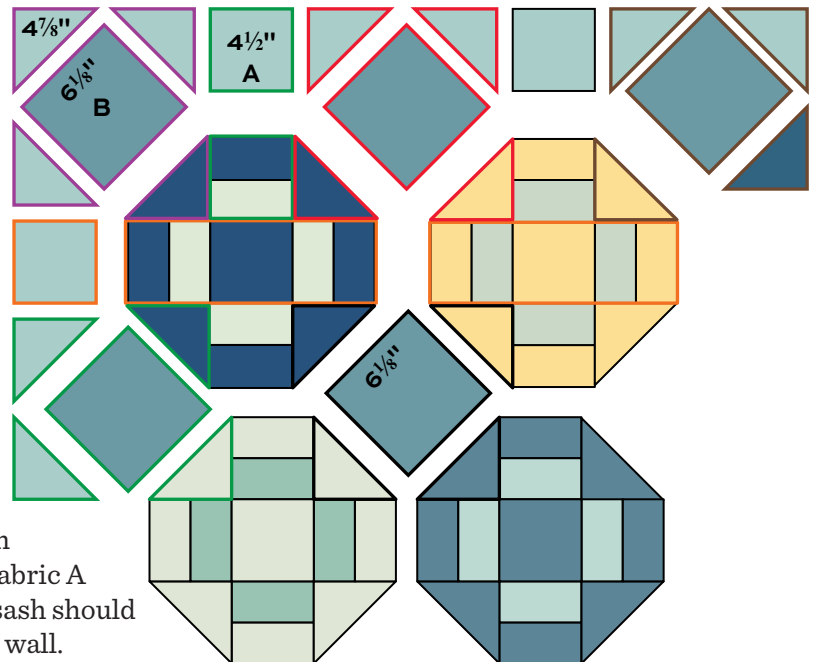
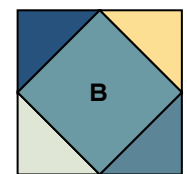


Diagram 2
Arrange color units and Fabrics A & B on design wall.

6. Remove the next 3 patches (outlined in green in Diagram 2), to make a short sash made with a Fabric A square and 2 rectangles. Join the patches. The sash should measure 4 1/2" x 8 1/2". Reposition it on the design wall.

7. Remove the next 5 patches (outlined in red) for the second block. This block has 2 Fabric A triangles and 2 different triangles that are part of the adjacent color units. Sew the triangles to the square. Trim if needed. Repeat these steps until you have stitched 5 blocks and 4 short sashes as shown in the Quilt Diagram. After each addition to the design wall, look at the quilt from a distance or through a camera or the wrong end of binoculars. This may help you find errors in color placement. It is easier to fix mistakes now rather than later. Once satisfied, join the blocks and short sashes to make the top block row. Reposition this row on the design wall.



Block – Make 30

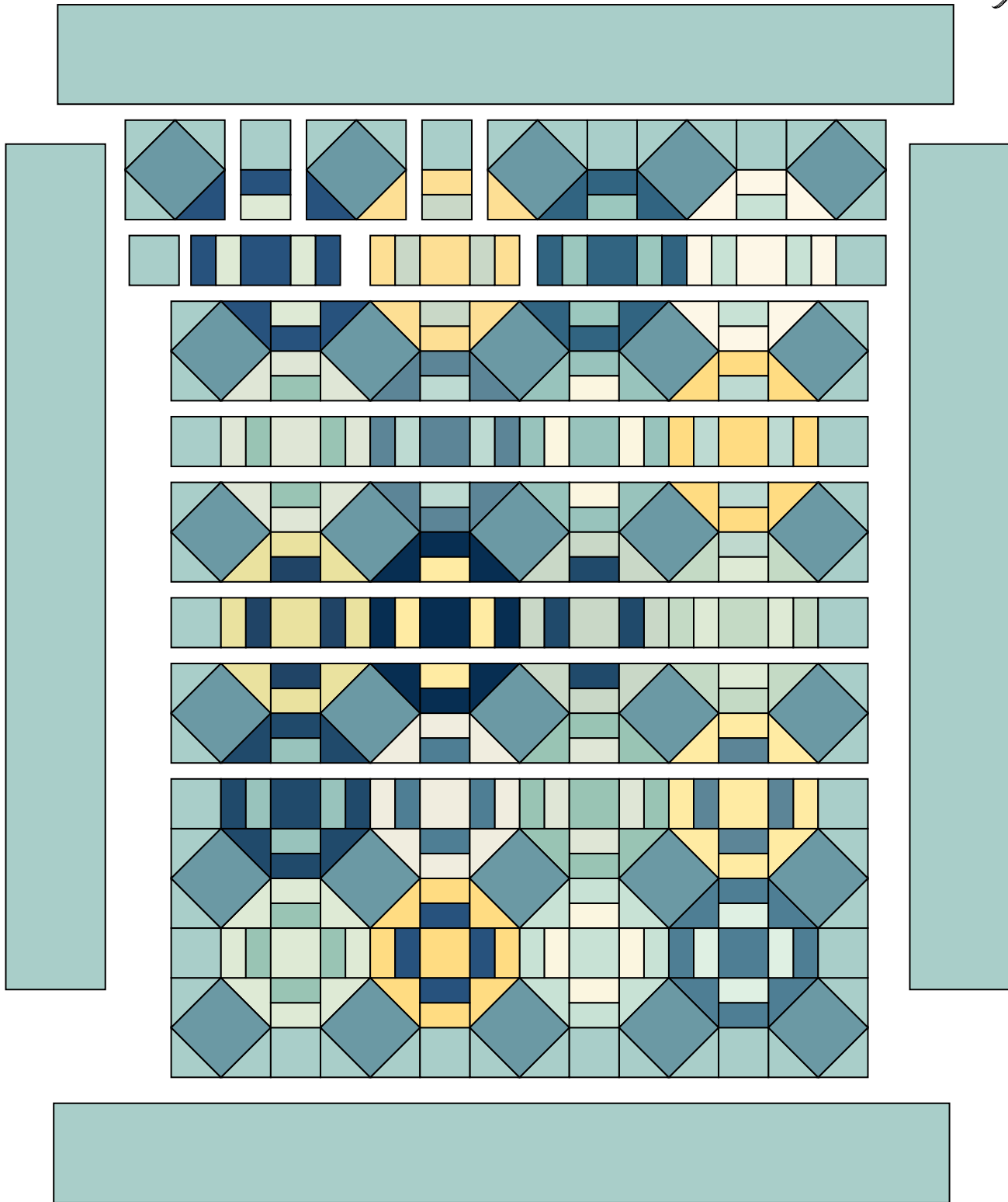
8. The next row is a sash row (shown in orange on Diagram 2). Join the appropriate rectangles and squares needed to match the 4 color units, and stitch a Fabric A square to each end. Reposition this row on the design wall.

9. Referring to the Quilt Diagram, repeat these steps to make a total of 6 block rows, noting the placement of Fabric A triangles in all blocks that are on the outer edges of the quilt. Make a total of 5 sash rows. Once you are satisfied with the arrangement, join the rows.

10. Sew borders to the sides of the quilt. Sew borders to the top and bottom.

Finishing the Quilt

11. Layer the quilt with batting and backing and baste. Quilt in the ditch around borders and block patches. Quilt around the printed motifs in the blocks and border. Bind with straight or bias binding.



Quilt Diagram

Annabella

RENÉE NANNEMAN



*Indicates fabrics are used in quilt pattern. Fabrics shown are 50% of actual size.



9716 B*



9716 T*



9717 L*



9717 T*



9717 Y*



9718 B*



9718 T*



9718 T1*



9719 L*



9719 T*



9720 L*



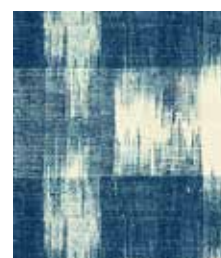
9720 T*



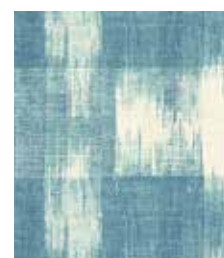
9721 B*



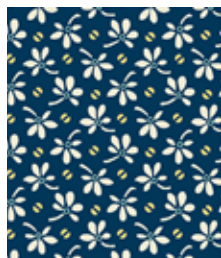
9721 L*



9722 B*



9722 T



9723 B*



9723 L*



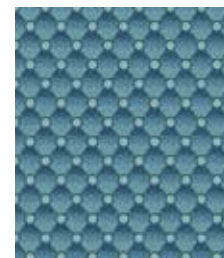
9723 T*



9724 L*



9724 T*



9724 T1*



9725 L*



9725 Y*



9726 B*



9726 Y*



9727 B*



9727 Y*

andover : makower uk

Free Pattern Download Available

1384 Broadway New York, NY 10018
Tel. (800) 223-5678 • andoverfabrics.com