

Midnight Sapphire

.....
A Free Project Sheet
NOT FOR RESALE
.....

By Barb Tourtillotte

Quilt Design by Heidi Pridemore



Quilt 1

Skill Level: Intermediate

 Henry Glass & Co., Inc.



facebook

Finished Quilt Size: 40" x 56"
49 West 37th Street, New York, NY 10018
tel: 212-686-5194 fax: 212-532-3525
Toll Free: 800-294-9495
www.henryglassfabrics.net

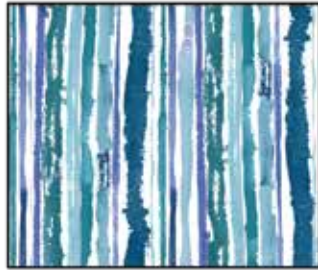
Please check our website for pattern updates before starting this project.

MIDNIGHT SAPPHIRE Quilt 1

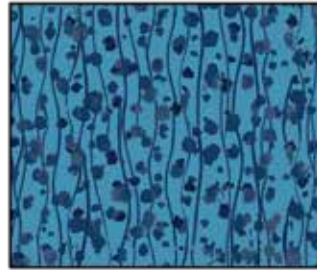
Fabrics in the Collection



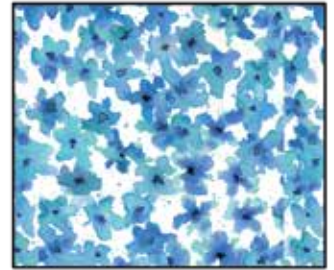
Watercolor Large Floral
Navy – 9380-77



Watercolor Stripe
Multi Blues – 9381-17



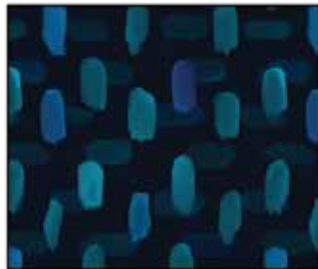
Wavy Stripe with Abstract Dots
Medium Blue – 9382-77



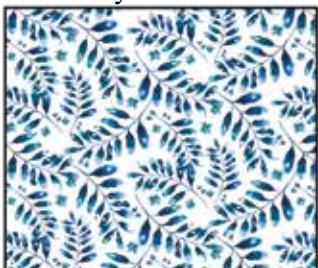
Small Abstract Floral
White/Blues – 9383-1



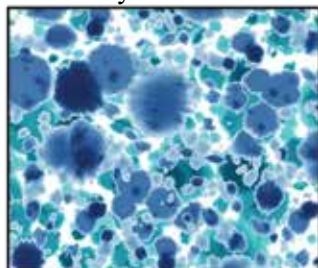
Tossed Hummingbirds
Navy – 9384-77



Brush Strokes
Navy – 9385-77



Tossed Leafy Vines
White/Blues – 9386-1



Watercolor Abstract Paint Spots
Multi Blues – 9387-17



Wallpaper Stripe
White/Blues – 9388-17

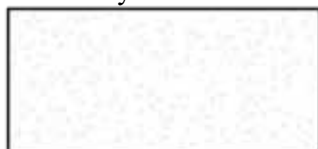


Textured Allover
Navy – 9389-77



Panel Vase Bouquet
Navy – 9390P-77

Select Fabric from
Folio Basics



White on White
7755-01

Materials

1 panel	Panel Vase Bouquet - Navy (A)	9390P-77
1/3 yard	Folio Basic - White on White (B)	7755-01
1/3 yard	Tossed Hummingbirds - Navy (C)	9384-77
1/3 yard	Watercolor Large Floral - Navy (D)	9380-77
1/3 yard	Watercolor Abstract Paint Spots - Multi Blues (E)	9387-17
3/4 yard	Tossed Leafy Vines - White/Blues (F)	9386-1
1 3/4 yard	Wallpaper Stripe - White/Blues (G)	9388-17
1/2 yard	Brush Strokes - Navy (H)	9385-77*
1/3 yard	Small Abstract Floral - White/Blues (I)	9383-1
2 3/4 yards	Small Abstract Floral - White/Blues (Backing)	9383-1

*Includes binding

Cutting Instructions

Please note: All strips are cut across the width of fabric (WOF) from selvage to selvage unless otherwise noted.

From the Panel Vase Bouquet - Navy (A):

- Fussy cut (1) 22 1/2" x 38 1/2" panel.

From the Folio Basics - White on White (B), cut:

- (2) 2" x 38 1/2" WOF strips.
- (2) 2" x 25 1/2" WOF strips.

From the Tossed Hummingbirds - Navy (C), cut:

- (16) Template 2 triangles.

From the Watercolor Large Floral - Navy (D), cut:

- (16) Template 2 triangles.

From the Watercolor Abstract Paint Spots - Multi Blues (E), cut:

- (3) 2 1/2" x WOF strips. Sub-cut (34) 2 1/2" squares.

From the Tossed Leafy Vines - White/Blues (F), cut:

- Cut (1) 4 1/2" x WOF strip. Sub-cut (4) 4 1/2" squares.
- (32) Template-1 triangles.
- (32) Template-3 triangles.

From the Wallpaper Stripe - White/Blues (G), cut:

- (2) 4 1/2" x 60" Length of Fabric (LOF) strips.
- (2) 4 1/2" x 44" LOF strips.

From the Brush Strokes - Navy (H), cut:

- (5) 2 1/2" x WOF strips for the binding.

From the Small Abstract Floral - White/Blues (I), cut:

- (3) 2 1/2" x WOF strips. Sub-cut (34) 2 1/2" squares.

From the Small Abstract Floral - White/Blues (Backing), cut:

- (2) 48" x WOF strips for the backing. Sew the strips together and trim to make the 48" x 64" back.

Block Assembly

Note: Pay attention to the unit orientations when assembling the various components.

1. Sew (1) 2" x 38 1/2" Fabric B strip to each side of the 22 1/2" x 38 1/2" Fabric A panel. Sew (1) 2" x 25 1/2" Fabric B strip to the top and to the bottom of the Fabric A panel. Trim the block to measure 24 1/2" x 40 1/2" to make the Center Block (Fig. 1).

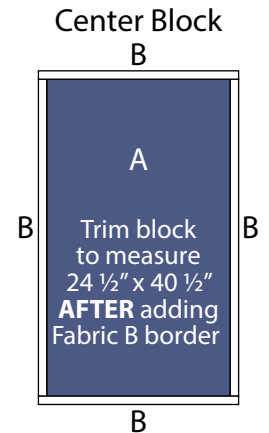
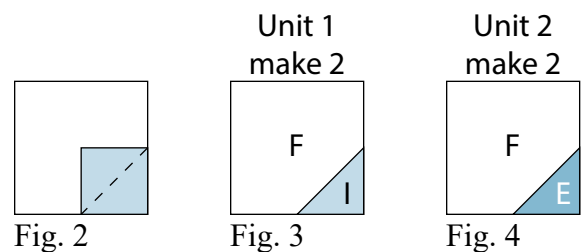


Fig. 1

2. Place (1) 2 1/2" Fabric I square on the bottom right corner of (1) 4 1/2" Fabric F square, right sides together (Fig. 2). Sew across the diagonal of the smaller square from the upper right corner to the lower left corner (Fig. 2). Flip open the triangle formed and press. Trim away the excess fabric from behind the triangle 1/4" away from the sewn seam to make (1) Unit 1 square (Fig. 3). Repeat to make a second Unit 1 square.



3. Repeat Step 2 and refer to Figure 4 for fabric identification, placement and seam direction to make (2) Unit 2 squares.

4. Place (1) Fabric F-Template 1 triangle on top of (1) Fabric C-Template 2 triangle, right sides together, aligning the left sides (Fig. 5). Sew the (2) triangles together along the left side. Press the smaller triangle open.

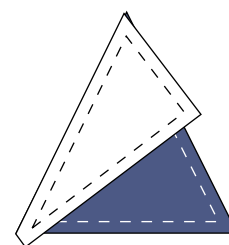


Fig. 5

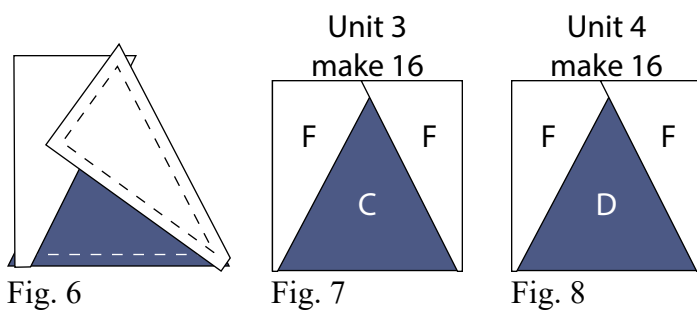
MIDNIGHT SAPPHIRE

Quilt 1

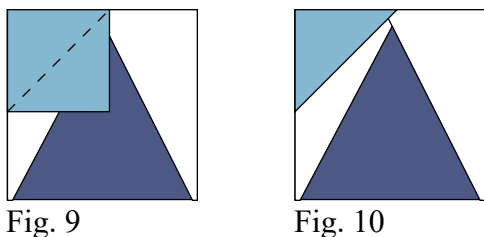
5. Place (1) Fabric F-Template 3 triangle on top of the Fabric C-Template 2 triangle, right sides together, aligning the right sides (Fig. 6). Sew the (2) triangles together along the right side. Press the smaller triangle open to make (1) unit. Trim the unit to measure 4 1/2" square to make (1) Unit 3 square (Fig. 7).

6. Repeat Steps 4-5 to make (16) Unit 3 squares total.

7. Repeat Steps 4-5 and refer to Figure 8 for fabric identification, placement and orientation to make (16) Unit 4 squares.

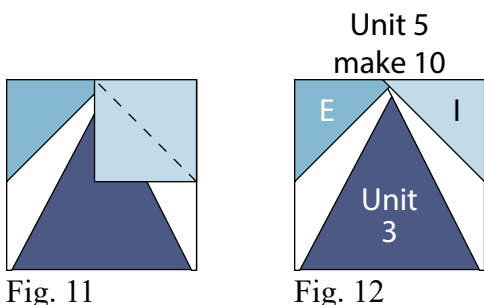


8. Place (1) 2 1/2" Fabric E square on the top left corner of (1) Unit 3 square, right sides together (Fig. 9). Sew across the diagonal of the smaller square from the upper right corner to the lower left corner (Fig. 9). Flip open the triangle formed and press. Trim away the excess fabric from behind the triangle 1/4" away from the sewn seam (Fig. 10).

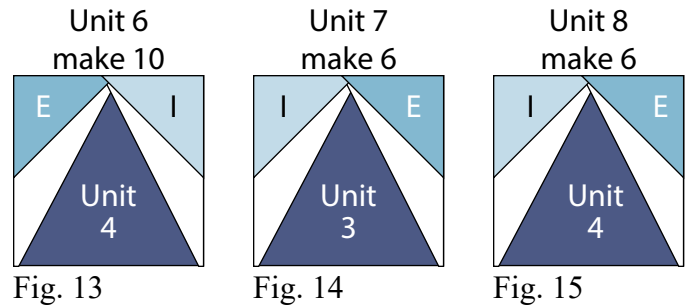


9. Follow Figure 11 for the seam direction to add a 2 1/2" Fabric I square to the upper right corner of the Unit 3 square to make (1) Unit 5 square (Fig. 12).

10. Repeat Steps 8-9 to make (10) Unit 5 squares total.

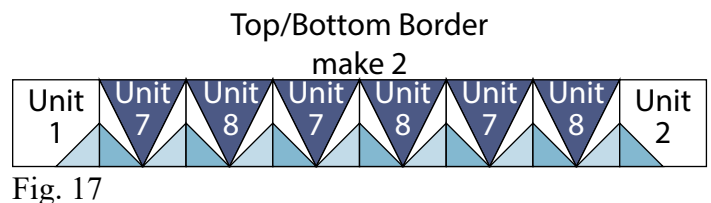
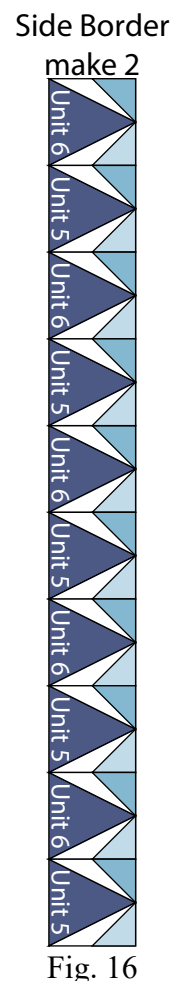


11. Repeat Steps 8-9 and refer to Figures 13-15 for component identification, placement, seam direction and orientation to make (10) Unit 6 squares, (6) Unit 7 squares and (6) Unit 8 squares.



12. Sew together (5) Unit 6 squares and (5) Unit 5 squares, alternating them from top to bottom, to make (1) Side Border (Fig. 16). Repeat to make a second Side Border.

13. Sew together (3) Unit 7 squares and (3) Unit 8 squares, alternating them from left to right. Sew (1) Unit 1 square to the left end of the newly sewn strip and (1) Unit 2 square to the right end to make the Top Border (Fig. 17 below). Repeat to make the bottom Border.



MIDNIGHT SAPPHIRE

Quilt 1

Page 3

Quilt Top Assembly

(Follow the *Quilt Layout* while assembling the quilt top.)

14. Sew (1) Side Border to each side of the Center Block. Sew the Top Border and Bottom Border to the top and to the bottom of the Center Block.

15. Center (1) 4 ½" x 60" Fabric G strip on (1) side of the Center Block and pin in place. Start sewing the strip a ¼" from the top edge of the block and stop a ¼" from the bottom edge. **DO NOT TRIM THE EXCESS.** Repeat with the opposite side.

16. Repeat Step 15 to sew (1) 4 ½" x 44" Fabric G strip to the top and to the bottom of the Center Block, making sure to stop and start ¼" away from each end of the block. To miter each corner, fold the Center Block on a diagonal, wrong side together. This should line up the strips from adjacent sides (Fig. 18).

17. Starting at the sewn seam (represented by the arrow in Figure 18), draw a 45-degree line to the edge of the fabric. Sew on the drawn line. Trim the excess fabric leaving a ¼" seam. Repeat this step with the remaining corners to make the quilt top.

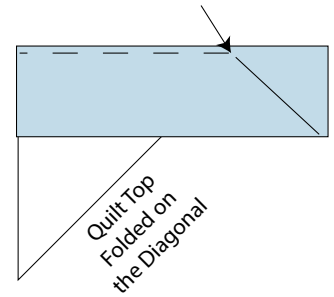
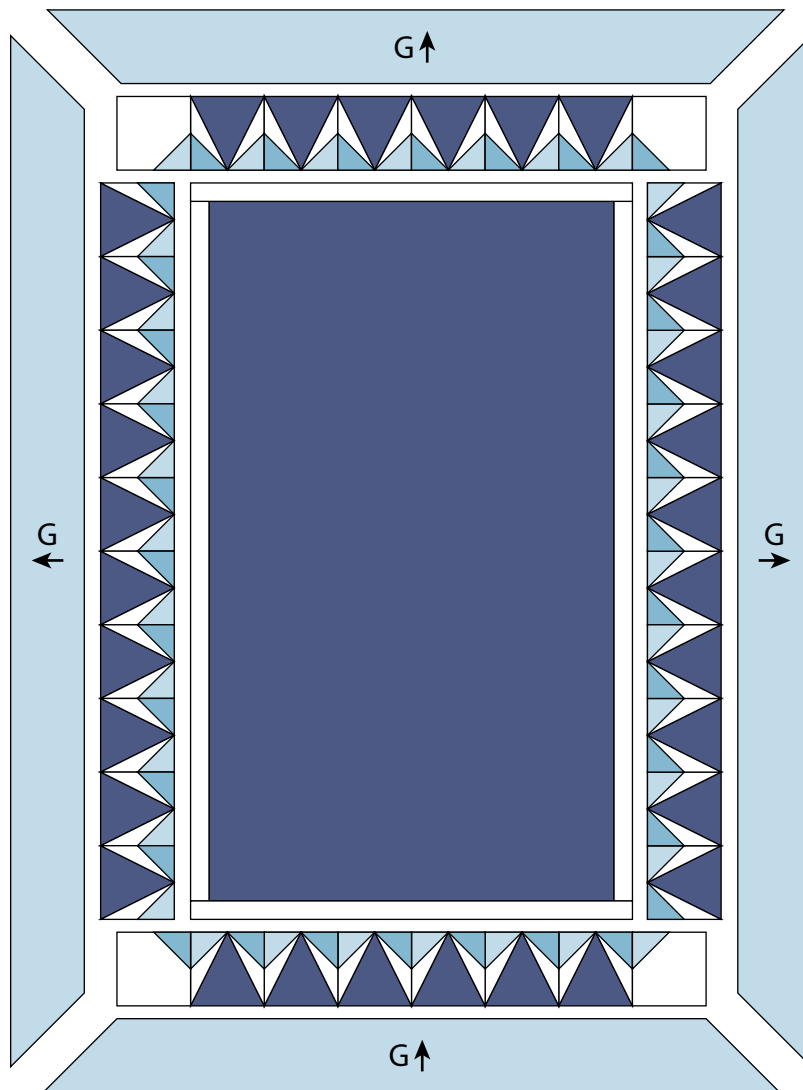


Fig. 18

18. Layer and quilt as desired.

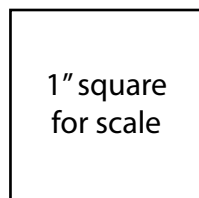
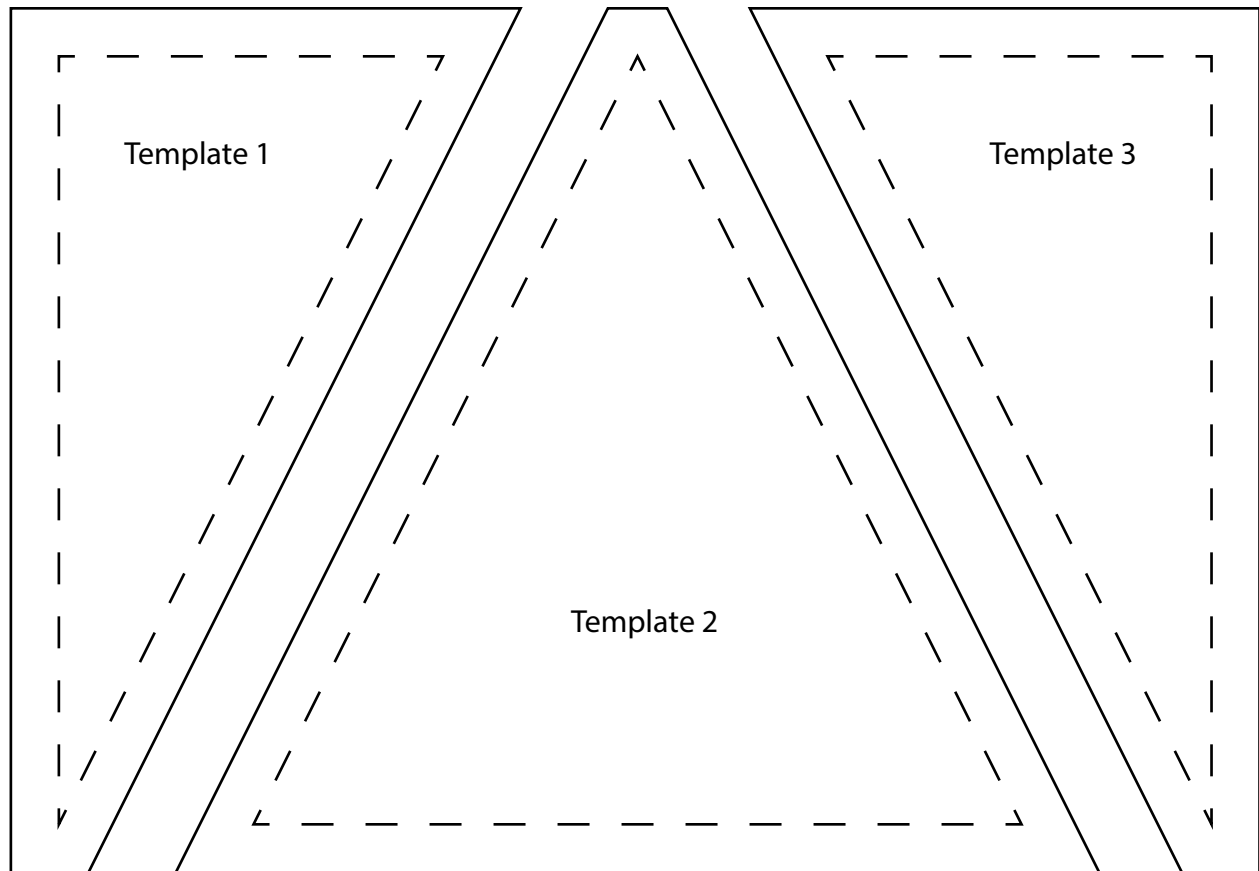
19. Sew the (5) 2 ½" x WOF Fabric H strips together, end to end with 45-degree seams, to make the binding. Fold this long strip in half lengthwise with wrong sides together and press.

20. Bind as desired.



Quilt Layout

100% Templates



1" square
for scale

**NOTE: All templates
should be cut from a
single layer of fabric.**

Every effort has been made to ensure that all projects are error free. All the information is presented in good faith, however no warranty can be given nor results guaranteed as we have no control over the execution of instructions. Therefore, we assume no responsibility for the use of this information or damages that may occur as a result. When errors are brought to our attention, we make every effort to correct and post a revision as soon as possible. Please make sure to check www.henryglassfabrics.net for pattern updates prior to starting the project. We also recommend that you test the project prior to cutting for kits. Finally, all free projects are intended to remain free to you and are not for resale.