

Secret Stash - Neutrals & Warm

EDYTA SITAR OF LAUNDRY BASKET QUILTS



Secret Stash Quilt designed by: **Edyta Sitar** • Quilt Size: **55" x 55"**

Skill Level: **Intermediate** • andoverfabrics.com

andover • makower.uk

Free Pattern Download Available

1384 Broadway New York, NY 10018
Tel. (800) 223-5678 • andoverfabrics.com

Secret Stash



Featuring Andover Fabrics new Collection: Secret Stash by Edyta Sitar

Quilt designed by Edyta Sitar of Laundry Basket Quilts

Quilt finished 55" x 55"

Quilt Cutting Directions

Note: Read assembly directions before cutting patches. Borders are cut to exact length required plus $\frac{1}{4}$ " seam allowance. WOF designates the width of fabric from selvedge to selvedge (approximately 42" wide).

Fabric A Cut (28) $5\frac{3}{8}$ " squares.
Cut (200) $2\frac{3}{8}$ " squares.
Cut (20) 2" squares.
Cut (4) $4\frac{3}{8}$ " squares. Cut the squares across both diagonals to make (16) $4\frac{3}{8}$ " triangles. *Note: You will only use (1) of each color.*
Cut (8) $3\frac{1}{2}$ " squares. Cut the squares across both diagonals to make (32) $3\frac{1}{2}$ " triangles. *Note: You will only use (1) of each color.*

Fabric B Cut (28) $5\frac{3}{8}$ " squares.
Cut (200) $2\frac{3}{8}$ " squares.
Cut (4) $5\frac{3}{8}$ " squares. Cut the squares across (1) diagonal to make (8) $5\frac{3}{8}$ " triangles. *Note: You will only use (1) of each color.*
Cut (4) $3\frac{1}{8}$ " squares. Cut the squares across (1) diagonal to make (8) $3\frac{1}{8}$ " triangles. *Note: You will only use (1) of each color.*
Cut (8) $2\frac{1}{2}$ " squares. Cut the squares across (1) diagonal to make $2\frac{1}{2}$ " triangles. *Note: You will only use (1) of each color.*

Fabric C Cut (2) $9\frac{3}{4}$ " x WOF strips. Sub-cut the strips into (6) $9\frac{3}{4}$ " squares. Cut the squares across both diagonals to make (24) $9\frac{3}{4}$ " triangles.
Cut (3) $2\frac{1}{2}$ " x WOF strips. Sew the strips together end to end for the side borders. You will measure the sides of your quilt before you cut the strips, but they should be approximately $2\frac{1}{2}$ " x $51\frac{1}{2}$ ".

Fabric Requirements

Quilt		Yardage	Fabric
Fabric A	blocks	Fat $\frac{1}{4}$ Bundle	Neutrals
Fabric B	blocks	Fat $\frac{1}{4}$ Bundle	Warmes
Fabric C	border, setting triangles	1 $\frac{1}{4}$ yards	9174-N
Binding		$\frac{3}{8}$ yard	9558-R
Backing		3 $\frac{1}{2}$ yards	9449-L

Cut (3) $2\frac{1}{2}$ " x WOF strips. Sew the strips together end to end for the top and bottom borders. You will measure the top and bottom of your quilt before you cut, but they should be approximately $2\frac{1}{2}$ " x $55\frac{1}{2}$ ".

Binding Cut (6) $2\frac{1}{2}$ " x WOF strips for the binding.

Backing Cut (2) 63" x WOF strips. Sew the strips together and trim to make (1) 63" x 63" backing.

Making the Quilt

1. Block Assembly

(Pay attention to the orientation of the units while assembling the various components.)

Place (1) $5\frac{3}{8}$ " Fabric A square on top of (1) $5\frac{3}{8}$ " Fabric B square, right sides together. Draw a line across the diagonal of the top square (Diagram 1). Sew $\frac{1}{4}$ " away from each side of the drawn diagonal line (Diagram 1). Cut the (2) squares apart on the drawn diagonal line (Diagram 2) to make (2) half-square triangles. Trim the half-square triangles to measure 5" square to make (2) Unit 1 squares (Diagram 3). Repeat to make (56) Unit 1 squares total.

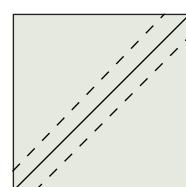


Diagram 1

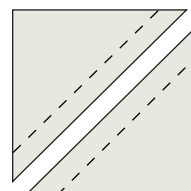


Diagram 2

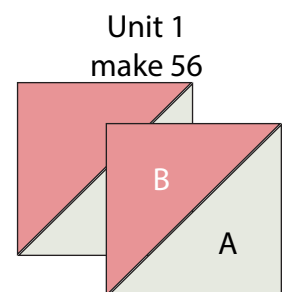
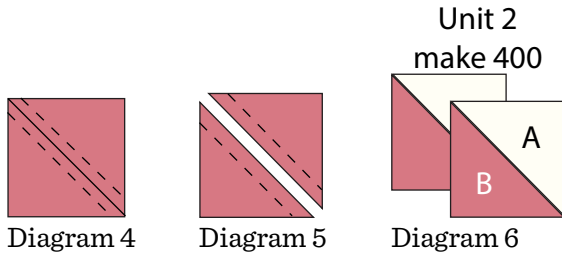


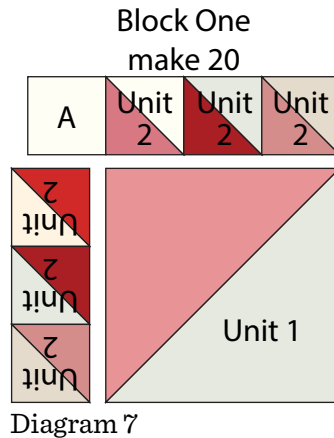
Diagram 3

Secret Stash

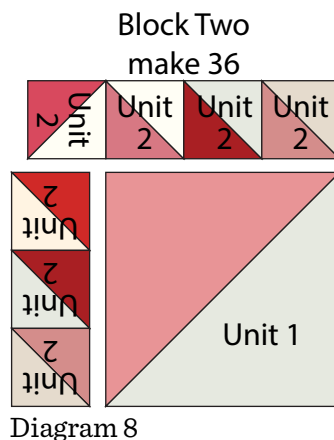
2. Place (1) $2\frac{3}{8}$ " Fabric B square on top of (1) $2\frac{3}{8}$ " Fabric A square, right sides together. Draw a line across the diagonal of the top square (Diagram 4). Sew $\frac{1}{4}$ " away from each side of the drawn diagonal line (Diagram 5). Cut the (2) squares apart on the drawn diagonal line (Diagram 6) to make (2) half-square triangles. Trim the half-square triangles to measure 2" square to make (2) Unit 2 squares (Diagram 6). Repeat to make (400) Unit 2 squares total.



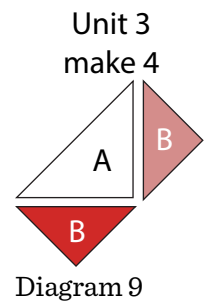
3. Sew together (3) Unit 2 squares. Sew the newly sewn strip to the left side of (1) Unit 1 square. Sew together (3) Unit 2 squares. Sew (1) 2" Fabric A square to the left end of the newly sewn strip. Sew the newly sewn strip to the top of the Unit 1 square to make (1) Block One square (Diagram 7). The block should measure $6\frac{1}{2}$ " square. Repeat to make (20) Block One squares total.



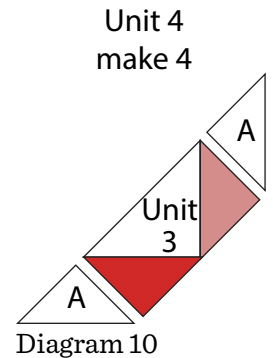
4. Sew together (3) Unit 2 squares. Sew the newly sewn strip to the left side of (1) Unit 1 square. Sew together (4) Unit 2 squares. Sew the newly sewn strip to the top of the Unit 1 square to make (1) Block Two square (Diagram 8). The block should measure $6\frac{1}{2}$ " square. Repeat to make (36) Block Two squares total.



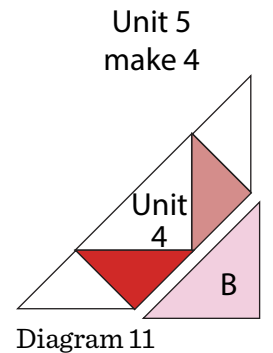
5. Follow Diagram 9 and sew (1) $2\frac{1}{2}$ " Fabric B triangle to the short sides of (1) $4\frac{3}{8}$ " Fabric A triangle to make (1) Unit 3 strip. Repeat to make (4) Unit 3 strips total.



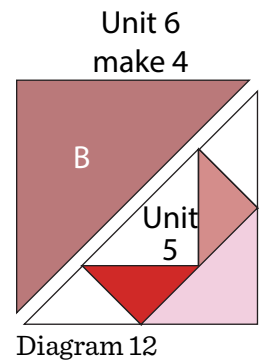
6. Sew (1) $3\frac{1}{2}$ " Fabric A triangle to each end (1) Unit 3 strip to make (1) Unit 4 strip (Diagram 10). Repeat to make (4) Unit 4 strips total.



7. Follow Diagram 11 and sew (1) $3\frac{1}{8}$ " Fabric B triangle to the bottom (1) Unit 4 strip to make (1) Unit 5 triangle. Repeat to make (4) Unit 5 triangles total.



8. Sew together (1) $5\frac{3}{8}$ " Fabric B triangle and (1) Unit 5 triangle along the long sides to make (1) Unit 6 square (Diagram 12). The unit should measure 5" square. Repeat to make (4) Unit 6 squares total.



Secret Stash

9. Sew together (3) Unit 2 squares. Sew the newly sewn strip to the left side of (1) Unit 6 square. Sew together (4) Unit 2 squares. Sew the newly sewn strip to the top of the Unit 6 square to make (1) Block Three square (Diagram 13). The block should measure 6 1/2" square. Repeat to make (4) Block Three squares total.

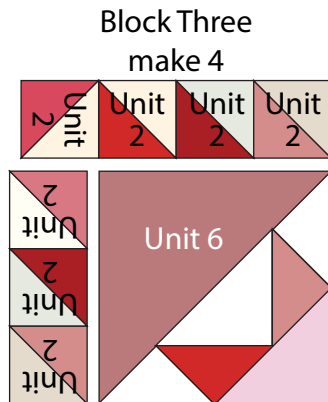


Diagram 13

10. Follow Diagram 14 below and sew together the (20) Block One squares, (36) Block Two squares, (4) Block Three squares and (24) 9 3/4" Fabric C triangles into (10) Rows to make the Center Block.

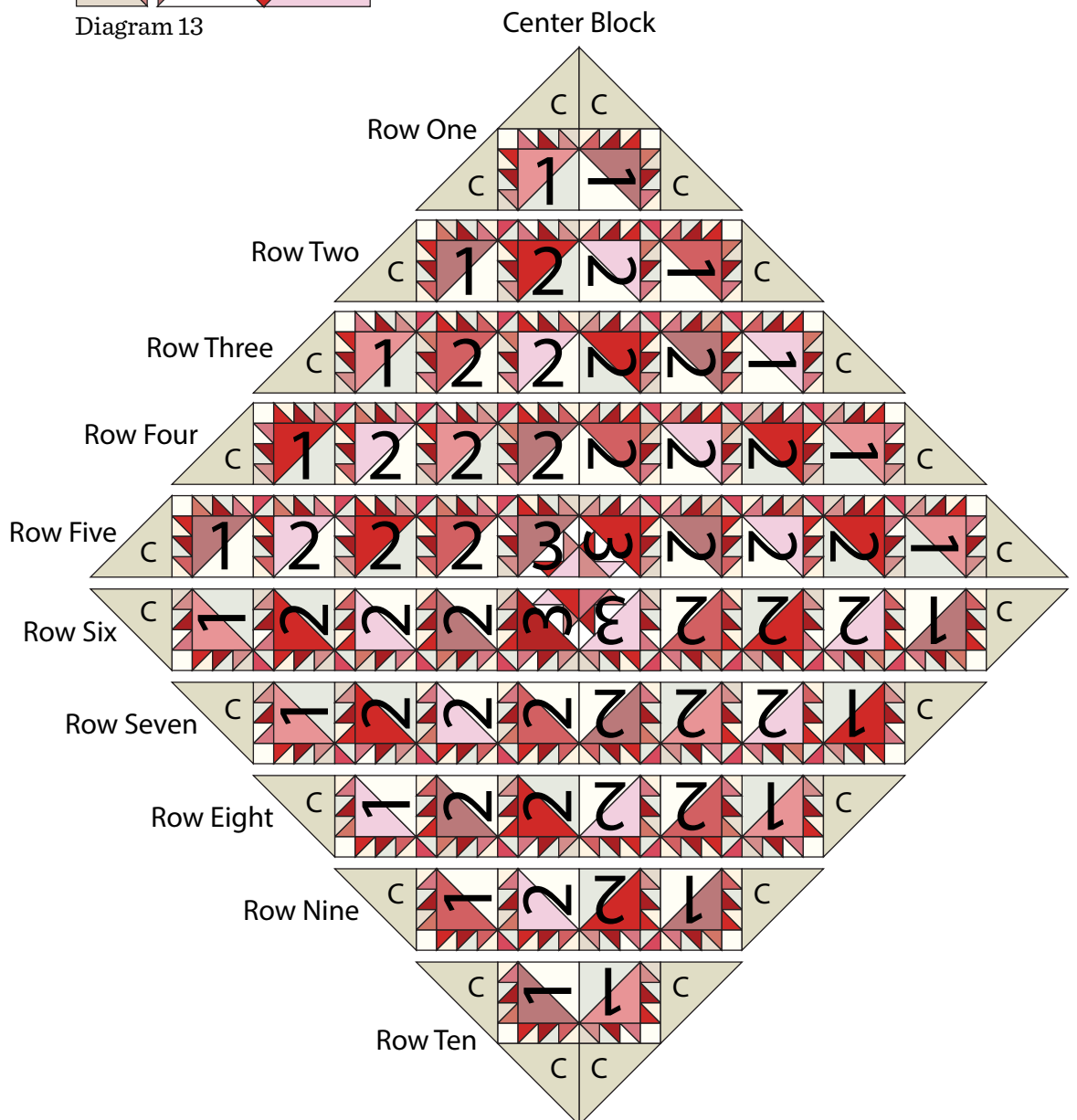


Diagram 14

Secret Stash

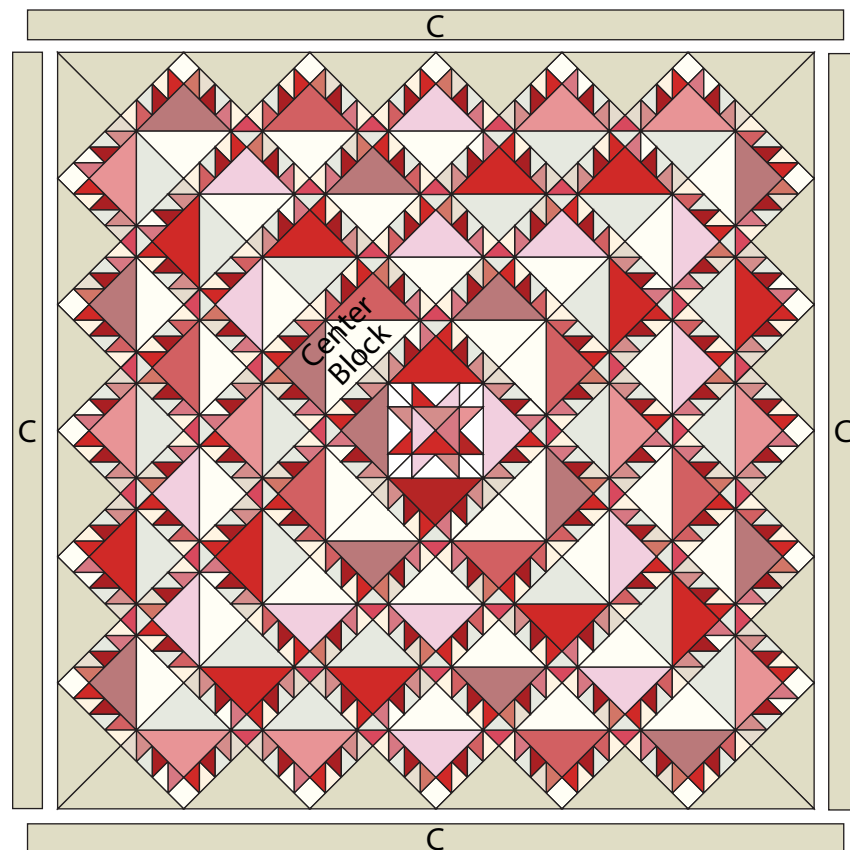
Quilt Top Assembly

(Refer to the Quilt Layout when assembling the quilt top.)

11. Measure the sides of the Center Block. Cut (2) Fabric C $2\frac{1}{2}$ " strips to that length and sew (1) to each side of the Center Block.
12. Measure the top and bottom of the Center Block. Cut (2) Fabric C $2\frac{1}{2}$ " strips to that length and sew them to the top and to the bottom of the Center Block to make the quilt top.

Finishing the Quilt

13. Layer and quilt as desired.
14. Sew the (6) binding strips together, end to end with a 45-degree seams, to make the binding. Fold this long strip in half lengthwise with wrong sides together and press.
15. Bind as desired.



Quilt Layout

Secret Stash - Neutrals & Warm

EDYTA SITAR OF LAUNDRY BASKET QUILTS



Secret Stash - Neutrals

NOTE: Quilt requires (1) Fat 1/4 bundle of both Neutrals and Warm plus the yardages listed below.



8622-N



8626-N



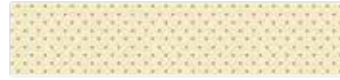
8751-T



8758-LE



8758-N



8760-LR



8834-L3



9174-L

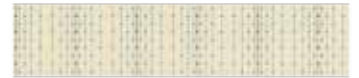


9174-N

2 1/2 yds



9181-L



9360-N



9449-L
(backing)

3 1/2 yds



9451-E



9460-L



9460-N



9461-N



9462-R



9464-N



9561-N



9595-L

Secret Stash - Warm



8615-E



8616-E



8619-O



8619-R



8620-R



8622-R



8624-O



8625-E



8626-O



8627-E



8750-L



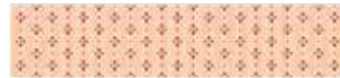
8752-R



8753-E1



8757-O



8758-E



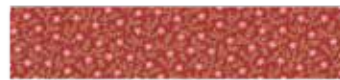
8823-E



8834-E



8994-E



9558-R
(binding)



9713-E

About Our Fabrics

A recognized leader in the quilting industry, Andover Fabrics features designs by a wide variety of talented artists and licenses, including Downton Abbey and Eric Carle's Very Hungry Caterpillar. Catering to the tastes of creative and dedicated quilters, Andover has a style for everyone — authentic reproductions, romantic florals, modern and more.

Fabrics shown are 25% of actual size.



Free Pattern Download Available

1384 Broadway New York, NY 10018
Tel. (800) 223-5678 • andoverfabrics.com