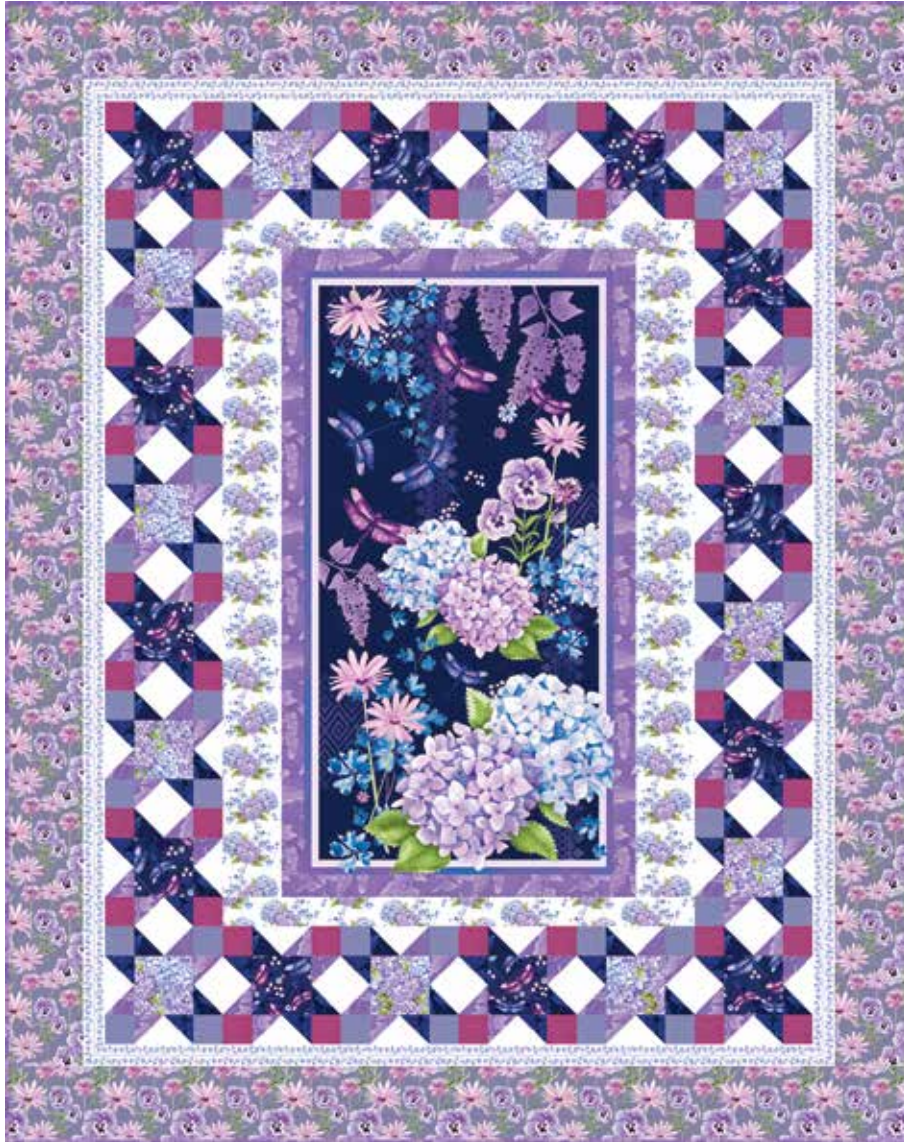


• A Free Project Sheet •  
• NOT FOR RESALE •

# MIDNIGHT HYDRANGEA

QUILT 1



Featuring fabrics from the **Midnight Hydrangea** collection by **Laura Stone** for **STUDIOe** fabrics

## Fabric Requirements

- (A) 5486P-77 ..... 1 panel
- (B) 5485-55 ..... 1 3/8 yards\*
- (C) 5483-1 ..... 1 3/8 yards
- (D) 5480-77 ..... 3/8 yard
- (E) 5485-77 ..... 1/2 yard
- (F) White Sugar-09\*\* 7/8 yard
- (G) Fuchsia-40\*\* ..... 1/3 yard
- (H) 5482-75 ..... 3/8 yard

- (I) Blue Bell-17\*\* ..... 1/3 yard
- (J) 5484-1 ..... 2 1/8 yards
- (K) 5481-55 ..... 2 yards
- Backing
- 5483-77 ..... 5 yards

\* Includes Binding  
\*\* Peppered Cottons Collection

## Additional Supplies Needed

- Batting 69" x 85" (Recommended:  
Air Lite® Colour Me 100% Cotton)
- Piecing and sewing thread
- Quilting and sewing supplies

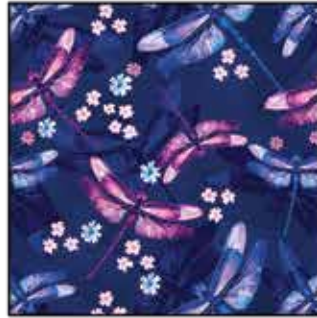
Quilt designed by Heidi Pridemore  
Finished Quilt Size 61" x 77"  
Skill Level: Advanced Beginner

Please check our website for pattern updates before starting this project.

# Fabrics in the Collection



Small Dragonfly  
Lilac - 5479-55



Dragonfly  
Navy - 5480-77



Floral  
Lilac - 5481-55



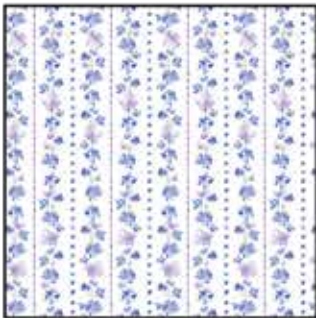
Packed Hydrangea  
Lilac - 5482-75



Tossed Allover Hydrangea  
White - 5483-1



Tossed Allover Hydrangea  
Navy - 5483-77



Small Floral Stripe  
White - 5484-1



Lilac and Dragonfly Tonal  
Lilac - 5485-55



Lilac and Dragonfly Tonal  
Navy - 5485-77



Hydrangea Panel  
Navy - 5486P-77

Select Fabric from  
Just Color!



Blue Bell  
Blue Bell-17



Fuchsia  
Fuchsia-40



White Sugar  
White Sugar-09

## Cutting

### Cutting Instructions

*Please note: All strips are cut across the width of fabric (WOF) from selvage to selvage edge unless otherwise noted.*

WOF= Width of Fabric • LOF = Length of Fabric

#### **Fabric A (5486P-77 Hydrangea Panel – Navy):**

- Fussy cut (1) 21 ½" x 41 ½" rectangle, centered on the panel.

#### **Fabric B (5485-55 Lilac and Dragonfly Tonal – Lilac), cut:**

- (2) 2 ½" x 41 ½" WOF strips.
- (2) 2 ½" x 25 ½" WOF strips.
- (6) 2 ½" x WOF strips, sub-cut (96) 2 ½" squares.
- (7) 2 ½" x WOF strips for the binding.

#### **Fabric C (5483-1 Tossed Allover Hydrangea – White), cut:**

- (2) 4 ½" x 44 ½" LOF strips.
- From the remaining fabric, cut (2) 2 ½" x 32 ½" WOF strips, piece as needed.

#### **Fabric D (5480-77 Dragonfly – Navy), cut:**

- (2) 4 ½" x WOF strips, sub-cut (12) 4 ½" squares.

#### **Fabric E (5485-77 Lilac and Dragonfly Tonal – Navy), cut:**

- (6) 2 ½" x WOF strips, sub-cut (96) 2 ½" squares.

#### **Fabric F (White Sugar-09 Peppered Cottons – White Sugar), cut:**

- (11) 2 ½" x WOF strips, sub-cut (96) 2 ½" x 4 ½" strips.

#### **Fabric G (Fuchsia-40 Peppered Cottons – Fuchsia) cut:**

- (3) 2 ½" x WOF strips, sub-cut (48) 2 ½" squares.

#### **Fabric H (5482-75 Packed Hydrangea – Lilac), cut:**

- (2) 4 ½" x WOF strips, sub-cut (12) 4 ½" squares.

#### **Fabric I (Blue Bell-17 Peppered Cottons – Blue Bell), cut:**

- (3) 2 ½" x WOF strips, sub-cut (48) 2 ½" squares.

#### **Fabric J (5484-1 Small Floral Stripe – White), cut:**

- (2) 2" x 71" LOF strips.
- (2) 2" x 55" LOF strips.

#### **Fabric K (5481-55 Floral – Lilac), cut:**

- (2) 5 ½" x 67 ½" LOF strips.
- From the remaining fabric, cut (2) 5 ½" x 61 ½" WOF strips, piece as needed.

#### **Backing (5483-77 Tossed Allover Hydrangea – Navy), cut:**

- (2) 85" x WOF strips. Sew the strips together and trim to 69" x 85" to make the back.

## Sewing

Sew using a  $\frac{1}{4}$ " seam allowance with right sides together (RST) unless otherwise indicated. Always press towards the darker fabric while assembling, unless otherwise noted by the arrows.

### Block Assembly

**Note: Pay attention to the unit orientations when assembling the various components.**

1. Sew (1)  $2\frac{1}{2}$ " x  $41\frac{1}{2}$ " Fabric B strip to each side of (1)  $21\frac{1}{2}$ " x  $41\frac{1}{2}$ " Fabric A panel. Sew (1)  $2\frac{1}{2}$ " x  $25\frac{1}{2}$ " Fabric B strip to the top and to the bottom of the Fabric A panel to make the Center Block (Fig. 1). **Trim the block to measure  $24\frac{1}{2}$ " x  $44\frac{1}{2}$ ".**

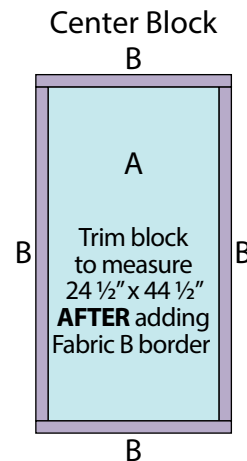


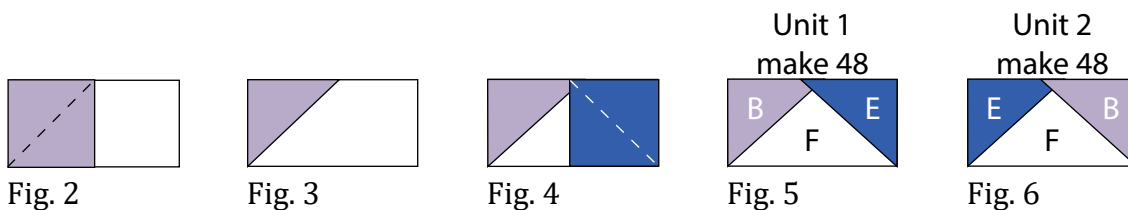
Fig. 1

2. Place (1)  $2\frac{1}{2}$ " Fabric B square on the left side of (1)  $2\frac{1}{2}$ " x  $4\frac{1}{2}$ " Fabric F strip, right sides together (Fig. 2). Sew across the diagonal of the square from the upper right corner to the lower left corner (Fig. 2). Flip open the triangle formed and press. Trim away the excess fabric from behind the triangle, leaving a  $\frac{1}{4}$ " seam allowance (Fig. 3).

3. Place (1)  $2\frac{1}{2}$ " Fabric E square on the right side of the  $2\frac{1}{2}$ " x  $4\frac{1}{2}$ " Fabric F strip, right sides together (Fig. 4). Sew across the diagonal of the square from the upper left corner to the lower right corner (Fig. 4). Flip open the triangle formed and press. Trim away the excess fabric from behind the triangle, leaving a  $\frac{1}{4}$ " seam allowance to make (1) Unit 1 strip (Fig. 5).

4. Repeat Steps 2-3 to make (48) Unit 1 strips total.

5. Repeat Steps 2-3 and refer to Figure 6 for fabric identification and placement to make (48) Unit 2 strips.



6. Sew (1)  $2\frac{1}{2}$ " Fabric I square to each end of (1) Unit 1, referring to Figure 7 for unit strip orientation, to make the top row. Repeat to make the bottom row. Sew (1) Unit 2 strip to each side of (1)  $4\frac{1}{2}$ " Fabric H square to make the middle row. Sew the rows together to make (1) Block One square (Fig. 7). Repeat to make (12) Block One squares total.

7. Sew (1)  $2\frac{1}{2}$ " Fabric G square to each end of (1) Unit 1, referring to Figure 8 for unit strip orientation to make the top row. Repeat to make the bottom row. Sew (1) Unit 2 strip to each side of (1)  $4\frac{1}{2}$ " Fabric D square to make the middle row. Sew the rows together to make (1) Block Two square (Fig. 8). Repeat to make (12) Block Two squares total.

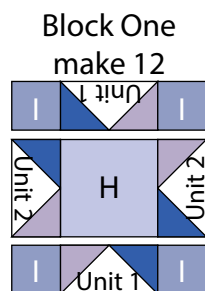


Fig. 7

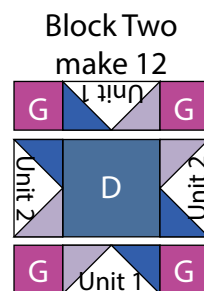


Fig. 8

8. Sew together (3) Block One squares and (3) Block Two squares, alternating them from top to bottom, to make the Left Side Border (Fig. 9).

9. Sew together (3) Block Two squares and (3) Block One squares, alternating them from top to bottom, to make the Right Side Border (Fig. 10).

Left Side  
Border

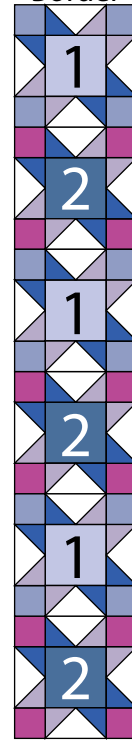


Fig. 9

Right Side  
Border

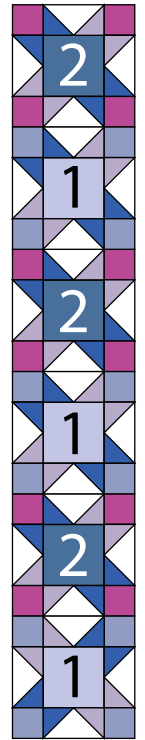


Fig. 10

10. Sew together (3) Block Two squares and (3) Block One squares, alternating them from left to right, to make the Top Border (Fig. 11).

11. Sew together (3) Block One squares and (3) Block Two squares, alternating them from left to right, to make the Bottom Border (Fig. 12).

Top Border



Fig. 11

Bottom Border

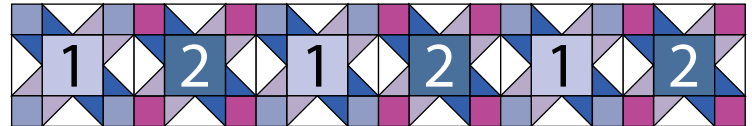


Fig. 12

## Quilt Top Assembly

*(Follow the Quilt Layout while assembling the quilt top.)*

12. Sew (1) 4 ½" X 44 ½" Fabric C strip to each side of the Center Block. Sew (1) 4 ½" x 32 ½" Fabric C strip to the top and to the bottom of the Center Block.

13. Sew the Left Side Border and Right Side Border to the left and to the right of the Center Block. Sew the Top Border and Bottom Border to the top and to the bottom of the Center Block.

14. Center (1) 2" x 71" Fabric J strip on (1) side of the Center Block and pin in place. Start sewing the strip a ¼" from the top edge of the block and stop a ¼" from the bottom edge. **DO NOT TRIM THE EXCESS.** Repeat with the opposite side.

15. Repeat Step 14 to sew (1) 2" x 55" Fabric J strip to the top and to the bottom of the Center Block, making sure to stop and start  $\frac{1}{4}$ " away from each end of the block. To miter each corner, fold the Center Block on a diagonal, wrong side together. This should line up the strips from adjacent sides (Fig. 13).

16. Starting at the sewn seam (represented by the arrow in Figure 13), draw a 45-degree line to the edge of the fabric. Sew on the drawn line. Trim the excess fabric leaving a  $\frac{1}{4}$ " seam. Repeat this step with the remaining corners.

17. Sew (1) 5  $\frac{1}{2}$ " x 67  $\frac{1}{2}$ " Fabric K strip to each side of the Center Block. Sew (1) 5  $\frac{1}{2}$ " x 61  $\frac{1}{2}$ " Fabric K strip to the top and to the bottom of the Center Block to make the quilt top.

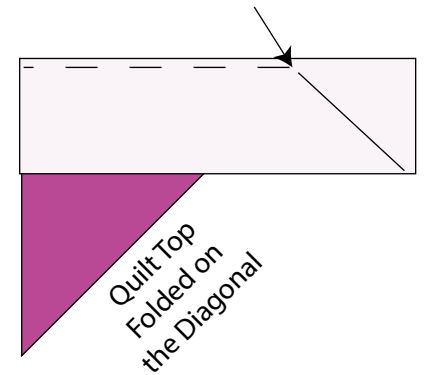


Fig. 13

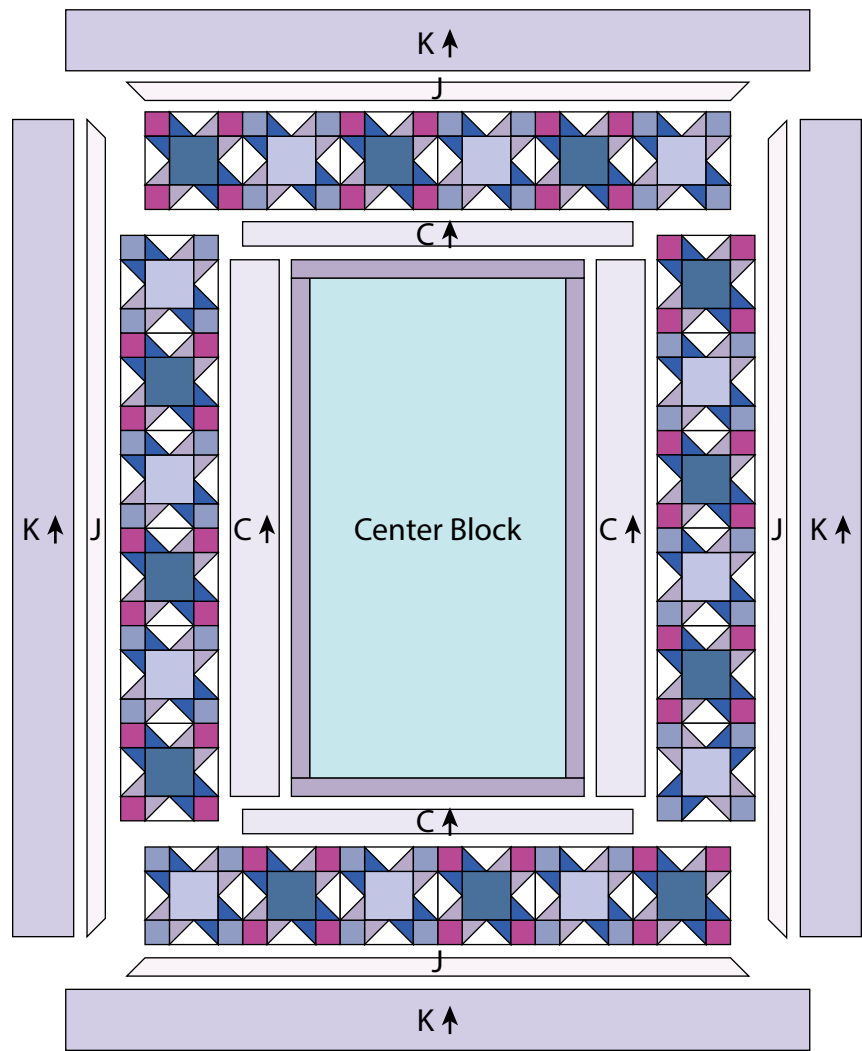
## Layering, Quilting and Finishing

18. Press the quilt top and 69" x 85" backing well. Layer backing (wrong side up), batting, pressed quilt top (right side up) and baste. Quilt as desired and trim excess batting and backing when quilting is complete.

## Binding

19. Cut the ends of the (7) Fabric B binding strips at a 45-degree angle and sew end to end to make (1) continuous piece of binding. Fold in half lengthwise and press wrong sides together.

20. Sew the binding to the front of the quilt, raw edges together. Turn the folded edge to the back, and hand stitch in place.



Quilt Layout

*Every effort has been made to ensure that all projects are error free. All the information is presented in good faith, however no warranty can be given nor results guaranteed as we have no control over the execution of instructions. Therefore, we assume no responsibility for the use of this information or damages that may occur as a result. When errors are brought to our attention, we make every effort to correct and post a revision as soon as possible. Please make sure to check [www.studioefabrics.net](http://www.studioefabrics.net) for pattern updates prior to starting the project. We also recommend that you test the project prior to cutting for kits. Finally, all free projects are intended to remain free to you and are not for resale.*