

Indigo Magic

designed by Marsha Evans Moore

featuring Touch the Sky batiks by Jacqueline de Jonge

SIZE: 50" x 63"

FREE
PROJECT



THIS IS A DIGITAL REPRESENTATION OF THE QUILT TOP, FABRIC MAY VARY.

PLEASE NOTE: BEFORE MAKING YOUR PROJECT, CHECK FOR ANY PATTERN UPDATES AT ANTHOLOGYFABRICS.COM'S FREE PROJECTS SECTION.



Indigo Magic

Please note: Please read the entire pattern before you begin. The diamond template is found on page 5.

KEY	FABRIC	SKU	YD	CUTTING INSTRUCTIONS
A		3019Q-X	3/8	(4) 2-1/4" x WOF strips; subcut (48) diamond templates.
B		3020Q-X	3/8	(4) 2-1/4" x WOF strips; subcut (48) diamond templates.
C		3022Q-X	7/8	(1) 5-1/2" x WOF strip; subcut (2) 5-1/2" squares and (4) 4-3/8" squares. Cut 4-3/8" squares in half diagonally once to make (8) triangles. (2) 2-1/4" x WOF strips; subcut (16) diamond templates. (1) 1-3/4" x WOF strip; subcut (20) 1-3/4" squares. BORDER 2: (6) 1-1/2" x WOF strips; sew ends together. Subcut (2) 1-1/2" x 61-1/4" borders and (2) 1-1/2" x 50" borders.
D		3023Q-X	3/8	(1) 5-1/2" x WOF strip; subcut (2) 5-1/2" squares and (4) 4-3/8" squares. Cut 4-3/8" squares in half diagonally once to make (8) triangles. (2) 2-1/4" x WOF strips; subcut (16) diamond templates.
E		3024Q-X	1-1/8	(1) 5-1/2" x WOF strip; subcut (2) 5-1/2" squares and (4) 4-3/8" squares. Cut 4-3/8" squares in half diagonally once to make (8) triangles. (2) 2-1/4" x WOF strips; subcut (16) diamond templates. BORDER 1: (5) 3-3/4" x WOF strips; sew ends together. Cut (2) 3-3/4" x 54-3/4" borders and (2) 3-3/4" x 48" borders.

Project Disclaimer: Every effort has been made to ensure that all projects are error free. All the information is presented in good faith, however, no warranty can be given nor results guaranteed. Therefore, we assume no responsibility nor damages that may occur when referring to this pattern. When errors are brought to our attention, we make every effort to correct and post a revision as soon as possible. We suggest you check anthologyfabrics.com for pattern updates and to test the pattern prior to making the project. Test templates first, before cutting all the pieces. Free projects are not for resale.



Indigo Magic

KEY	FABRIC	SKU	YD	CUTTING INSTRUCTIONS
F		3025-X	1/4	(1) 5-1/2" x WOF strip; subcut (2) 5-1/2" squares and (2) 4-3/8" squares. Cut 4-3/8" squares in half diagonally once to make (4) triangles.
G		3026-X	3/8	(2) 2-1/4" x WOF strips; subcut (16) diamond templates. (2) 3" x WOF strips; subcut (24) 3" squares.
H		3027Q-X	3/8	(2) 5-1/2" x WOF; subcut (2) 5-1/2" squares and (8) 4-3/8" squares. Cut 4-3/8" squares in half diagonally once to make (16) triangles. (2) 2-1/4" x WOF; subcut (16) diamond templates.
I		3028Q-X	7/8	(1) 5-1/2" x WOF strip; subcut (2) 5-1/2" squares. (11) 1-3/4" x WOF; subcut (31) 1-3/4" x 12-1/2" strips. (2) 2-1/4" x WOF; subcut (16) diamond templates.
J		3029Q-X	7/8	(2) 3" x WOF strips; subcut (24) 3" squares. FOR BINDING: (6) 2-1/4" x 42" strips, sew short ends together.
K		3030Q-X	1/4	(1) 4-3/8" x WOF strip; subcut (4) 4-3/8" squares. Cut 4-3/8" squares in half diagonally once to make (8) triangles.
		Backing	4	Batting 59" x 72"

ADDITIONAL MATERIALS

Thread to match fabrics
 Template plastic
 Basic sewing supplies

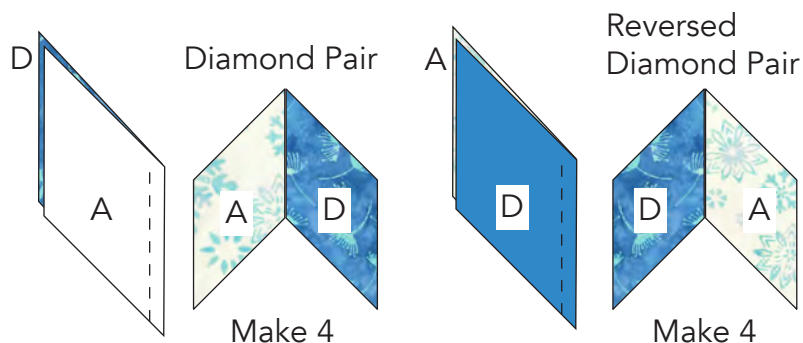
Sewing machine
 Rotary cutter, ruler and mat



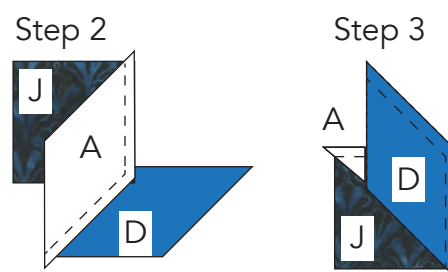
Indigo Magic

BLOCKS

1. Sew (1) **A** diamond to (1) **D** diamond beginning at the corner of the seamline and ending at the edge of the fabric to make a diamond pair. Sew (1) **D** diamond to (1) **A** diamond in the same way to make a reversed diamond pair. Make 4 each.



2. Take (1) diamond pair and sew the inner edge of the **A** diamond to one side of (1) **J** 3" square ending at the corner of the seamline.



3. Sew the inner edge of the **D** diamond to the adjacent side of the square beginning at the of the seamline.

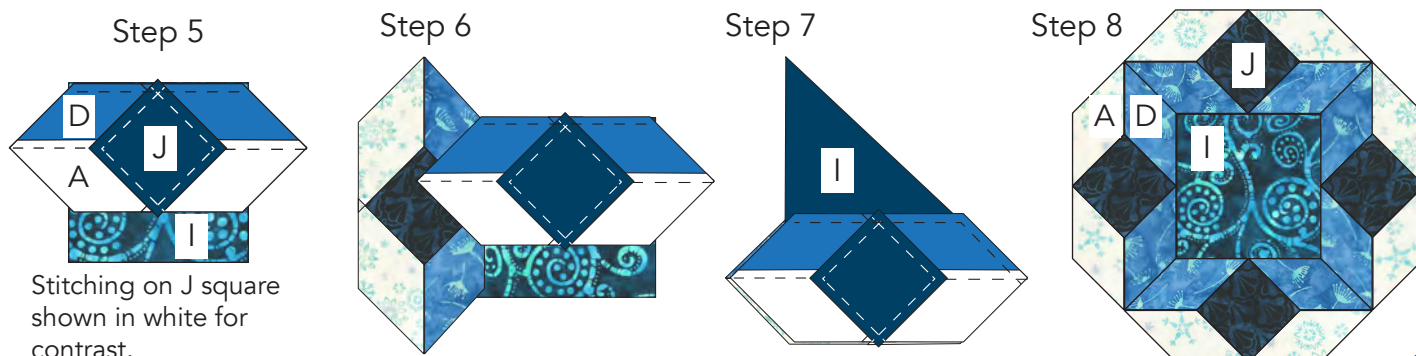
4. Sew (1) reversed diamond pair to the opposite sides of the 3" square in the same way to make a diamond/square unit.

5. Sew the **D** side of the diamond/square unit to the side of the **I** 5-1/2" square beginning and ending the stitching at the corner of the seamline.

6. Fold the end of the diamond/square unit and the seam allowance away from the seamline and sew another diamond/square unit to the adjacent edge of the square in the same way.

7. Align the diagonal ends of the **D** diamonds and sew them together beginning at the corner of the seamline.

8. Continue adding the diamond/square units to the other sides of the square and sewing the diagonal seams to complete the block center.





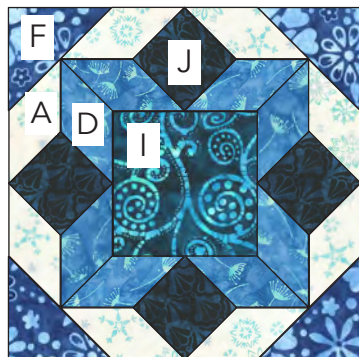
Indigo Magic

9. Sew (1) **H** 4-3/8" triangle to corners of the block center. Block should measure 12-1/2" square including seam allowance. Make 2.

10. Following steps 1-9 make Blocks 2-6 using the squares, diamonds and triangles as shown. Make 2 of each block.

Step 9

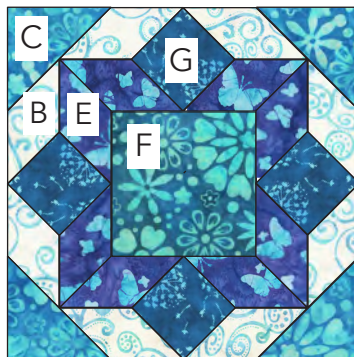
Block 1



Make 2

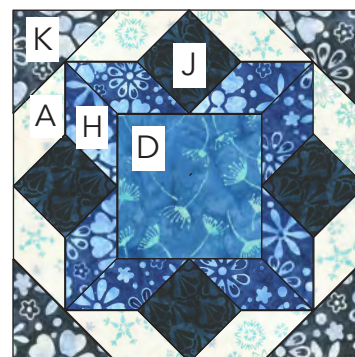
Step 10

Block 2



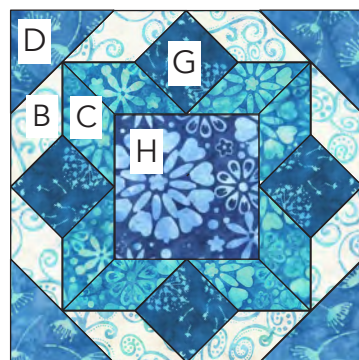
Make 2

Block 3



Make 2

Block 4



Make 2

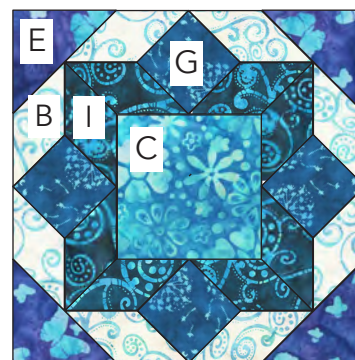
Block 5



Make 2

Block 6

12-1/2" square



Make 2

QUILT ASSEMBLY

11. Arrange the blocks in 4 rows of 3 blocks as shown in the layout diagram on page 5. Sew (3) blocks alternating with (4) **I** 1-3/4" x 12-1/2" strips together to make the block rows.

12. Sew (4) **C** 1-3/4" squares alternating with (3) **I** 1-3/4" x 12-1/2" strips together to make the sashing rows.

13. Sew (5) sashing rows and (4) block rows together to make the quilt center.

BORDERS

14. Sew (1) **E** 3-3/4" x 54-3/4" border to sides of quilt center. Sew (1) **E** 3-3/4" x 48" border to top and bottom of quilt.

15. Sew (1) **C** 1-1/2" x 61-1/4" border to sides of quilt. Sew (1) **C** 1-1/2" x 50" border to top and bottom of quilt.



Indigo Magic

C - 1-1/2" x 50"

QUILT LAYOUT

E - 3-3/4" x 48"

C - 1-1/2" x 61-1/4"

E - 3-3/4" x 54-3/4"

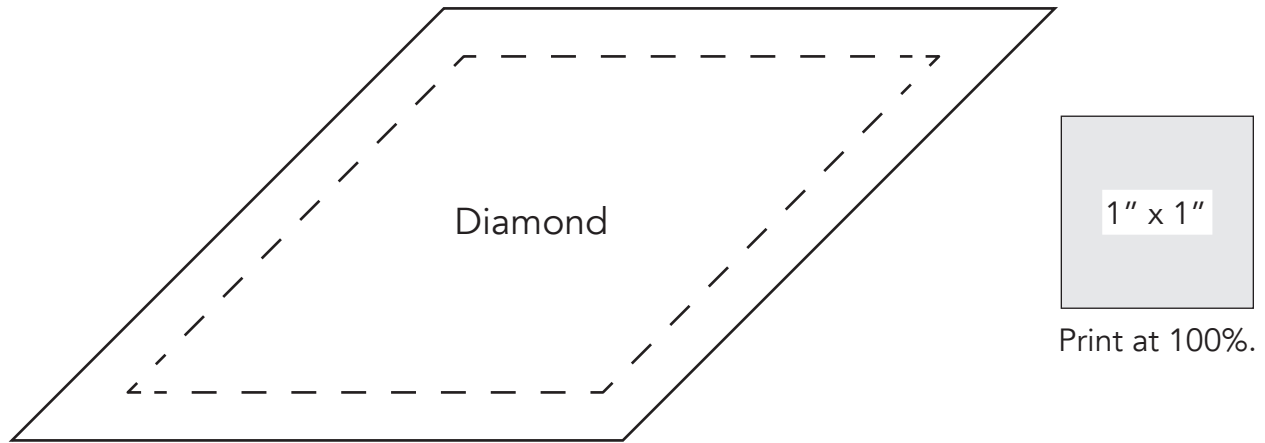


FINISHING: Layer quilt top, batting and backing together to form quilt sandwich. Baste and quilt as desired. Bind using J 2-1/4" strips.



Indigo Magic

Template



Trace and cut diamonds using diamond template OR Cut 2-1/4" diamonds from the 2-1/4" strips with a rotary cutter using the 45° line on your ruler.