

Tarrytown

••••• A Free Project Sheet •••••
••••• NOT FOR RESALE •••••

By Michelle Yeo

Quilt Design by Michelle Yeo




Version #2



Version #1

Quilt 2

Skill Level: Advanced Beginner

 Henry Glass & Co., Inc.



facebook

Finished Quilt Size: 68" x 68"
49 West 37th Street, New York, NY 10018
tel: 212-686-5194 fax: 212-532-3525
Toll Free: 800-294-9495
www.henryglassfabrics.net

Please check our website for pattern updates before starting this project.

TARRYTOWN

Quilt 2

Finished Quilt Size: 68" x 68"

Fabrics in the Collection



Main Floral - Cream
2597-33



Main Floral - Teal
2597-76



Main Floral - Red
2597-88



Floral Toile Tonal - Cream/Red
2598-38



Stripey Bouquet - Linden Green
2600-66



Stripey Bouquet - Blue
2600-77



Diamond - Rose/Plum
2601-22



Diamond - Mint/Teal
2601-76



Twisted Ribbon - Olive
2602-66



Twisted Ribbon - Teal
2602-76



Twisted Ribbon - Red
2602-88



Tiny Vines - Cream
2603-33



Tiny Vines - Teal
2603-76



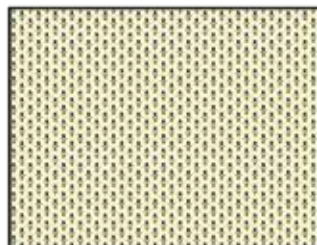
Tiny Vines - Red
2603-88



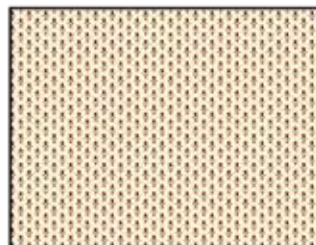
Tiny Spray - Pink
2604-22



Tiny Spray - Cream
2604-33



Shirting Foulard - Green/Teal
2605-37



Shirting Foulard - Red
2605-38

Materials - Version #1

Fat 1/8	Tiny Spray - Pink (A)	2604-22
Fat 1/8	Shirting Foulard - Green/Teal (B)	2605-37
1/3 yard	Stripey Bouquet - Linden Green (C)	2600-66
1/3 yard	Tiny Vines - Cream (D)	2603-33
Fat 1/8	Tiny Vines - Teal (E)	2603-76
1/2 yard	Tiny Spray - Cream (F)	2604-33
Fat 1/8	Twisted Ribbon - Olive (G)	2602-66
Fat 1/8	Twisted Ribbon - Teal (H)	2602-76
Fat 1/8	Diamond - Mint/Teal (I)	2601-76
Fat 1/8	Main Floral - Teal (J)	2597-76
Fat 1/8	Main Floral - Red (K)	2597-88
Fat 1/4	Shirting Foulard - Red (L)	2605-38
Fat 1/8	Diamond - Rose/Plum (M)	2601-22
Fat 1/8	Twisted Ribbon - Red (N)	2602-88
Fat 1/8	Stripey Bouquet - Blue (O)	2600-77
1 1/3 yards	Tiny Vines - Red (P)	2603-88
2 1/2 yards	Floral Toile Tonal - Cream/Red (Q)	2598-38*
4 1/2 yards	Main Floral - Cream (Backing)	2597-33

Materials - Version #2

Fat 1/8	Stripey Bouquet - Blue (A)	2600-77
Fat 1/8	Shirting Foulard - Green/Teal (B)	2605-37
1/3 yard	Stripey Bouquet - Linden Green (C)	2600-66
1/3 yard	Tiny Vines - Cream (D)	2603-33
Fat 1/8	Tiny Vines - Red (E)	2603-88
1/2 yard	Tiny Spray - Cream (F)	2604-33
Fat 1/8	Twisted Ribbon - Olive (G)	2602-66
Fat 1/8	Twisted Ribbon - Red (H)	2602-88
Fat 1/8	Diamond - Rose/Plum (I)	2601-22
Fat 1/8	Main Floral - Red (J)	2597-88
2 1/2 yards	Main Floral - Teal (K)	2597-76*
Fat 1/4	Shirting Foulard - Red (L)	2605-38
Fat 1/8	Twisted Ribbon - Teal (M)	2602-76
Fat 1/8	Diamond - Mint/Teal (N)	2601-76
Fat 1/8	Tiny Spray - Pink (O)	2604-22
1 1/3 yards	Tiny Vines - Teal (P)	2603-76
4 1/2 yards	Main Floral - Cream (Backing)	2597-33

*Includes binding

Cutting Instructions - Version #1

Please note: All strips are cut across the width of fabric (WOF) from selvage to selvage edge unless otherwise noted.

From the Tiny Spray - Pink (A), cut:

- (4) 3 1/2" squares.
- (16) 2" squares.

From the Shirting Foulard - Green/Teal (B), cut:

- (16) 2" x 3 1/2" strips.

From the Stripey Bouquet - Linden Green (C), cut:

- (1) 3 1/2" x WOF strip. Sub-cut (8) 3 1/2" squares.
- (2) 2" x WOF strips. Sub-cut (32) 2" squares.

From the Tiny Vines - Cream (D), cut:

- (4) 2" x WOF strips. Sub-cut (48) 2" x 3 1/2" strips.

From the Tiny Vines - Teal (E), cut:

- (4) 3 1/2" squares.
- (16) 2" squares.

From the Tiny Spray - Cream (F), cut:

- (6) 2" x WOF strips. Sub-cut (68) 2" x 3 1/2" strips.

From the Twisted Ribbon - Olive (G), cut:

- (4) 3 1/2" squares.
- (16) 2" squares.

From the Twisted Ribbon - Teal (H), cut:

- (4) 3 1/2" squares.
- (16) 2" squares.

From the Diamond - Mint/Teal (I), cut:

- (4) 3 1/2" squares.
- (16) 2" squares.

From the Main Floral - Teal (J), cut:

- (4) 3 1/2" squares.
- (16) 2" squares.

From the Main Floral - Red (K), cut:

- (4) 3 1/2" squares.
- (16) 2" squares.

From the Shirting Foulard - Red (L), cut:

- (32) 2" x 3 1/2" strips.

From the Diamond - Rose/Plum (M), cut:

- (2) 3 1/2" squares.
- (8) 2" squares.

From the Twisted Ribbon - Red (N), cut:

- (2) 3 1/2" squares.
- (8) 2" squares.

From the Stripey Bouquet - Blue (O), cut:

- (1) 3 1/2" square.
- (4) 2" squares.

From the Tiny Vines - Red (P), cut:

- (7) 6 1/2" x WOF strips. Sub-cut (40) 6 1/2" squares.

From the Floral Toile Tonal - Cream/Red (Q), cut:

- (7) 2 1/2" x WOF strips for the binding.
- (2) 7 1/2" x 68 1/2" LOF strips.
- From the remaining fabric, cut (2) 7 1/2" x 54 1/2" WOF strips, piece as needed.

From the Main Floral - Cream (Backing), cut:

- (2) 76" x WOF strips for the backing. Sew the strips together and trim to make the 76" x 76" back.

Cutting Instructions - Version #2

Please note: All strips are cut across the width of fabric (WOF) from selvage to selvage unless otherwise noted.

From the Stripty Bouquet - Blue (A), cut:

- (4) 3 1/2" squares.
- (16) 2" squares.

From the Shirting Foulard - Green/Teal (B), cut:

- (16) 2" x 3 1/2" strips.

From the Stripty Bouquet - Linden Green (C), cut:

- (1) 3 1/2" x WOF strip. Sub-cut (8) 3 1/2" squares.
- (2) 2" x WOF strips. Sub-cut (32) 2" squares.

From the Tiny Vines - Cream (D), cut:

- (4) 2" x WOF strips. Sub-cut (48) 2" x 3 1/2" strips.

From the Tiny Vines - Red (E), cut:

- (4) 3 1/2" squares.
- (16) 2" squares.

From the Tiny Spray - Cream (F), cut:

- (6) 2" x WOF strips. Sub-cut (68) 2" x 3 1/2" strips.

From the Twisted Ribbon - Olive (G), cut:

- (4) 3 1/2" squares.
- (16) 2" squares.

From the Twisted Ribbon - Red (H), cut:

- (4) 3 1/2" squares.
- (16) 2" squares.

From the Diamond - Rose/Plum (I), cut:

- (4) 3 1/2" squares.
- (16) 2" squares.

From the Main Floral - Red (J), cut:

- (4) 3 1/2" squares.
- (16) 2" squares.

From the Main Floral - Teal (K), cut:

- (7) 2 1/2" x WOF strips for the binding.
- (2) 7 1/2" x 68 1/2" LOF strips.
- From the remaining fabric, cut (2) 7 1/2" x 54 1/2" WOF strips, (4) 3 1/2" squares, and (16) 2" squares.

From the Shirting Foulard - Red (L), cut:

- (32) 2" x 3 1/2" strips.

From the Twisted Ribbon - Teal (M), cut:

- (2) 3 1/2" squares.
- (8) 2" squares.

From the Diamond - Mint/Teal (N), cut:

- (2) 3 1/2" squares.
- (8) 2" squares.

From the Tiny Spray - Pink (O), cut:

- (1) 3 1/2" square.
- (4) 2" squares.

From the Tiny Vines - Teal (P), cut:

- (7) 6 1/2" x WOF strips. Sub-cut (40) 6 1/2" squares.

From the Main Floral - Cream (Backing), cut:

- (2) 76" x WOF strips for the backing. Sew the strips together and trim to make the 76" x 76" back.

Block Assembly

Note: The arrows in figures represent the fabric print direction. Pay attention to the fabric and unit orientations when assembling the various components.

Sew (1) 2" Fabric A square to each end of (1) 2" x 3 1/2" Fabric B strip to make the top row. Repeat to make the bottom row. Sew 2" x 3 1/2" Fabric B strip to each side of (1) 3 1/2" Fabric A square to make the middle row. Sew the rows together to make (1) 6 1/2" Block One square (Fig. 1). Repeat to make (4) Block One squares total.

Block One
make 4

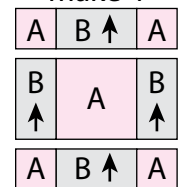


Fig. 1

Repeat Step 1 and refer to Figures 2-11 for fabric identification and placement to make the indicated number of placement of each block square for Block Two through Block Eleven.

Block Two
make 8

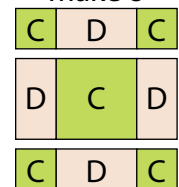


Fig. 2

Block Three
make 4

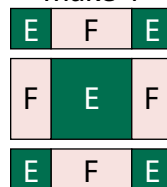


Fig. 3

Block Four
make 4

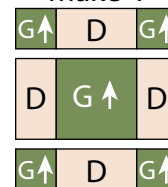


Fig. 4

Block Five
make 4

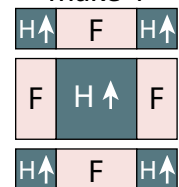


Fig. 5

Block Six
make 4

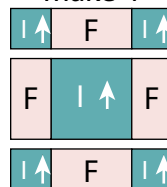


Fig. 6

Block Seven
make 4

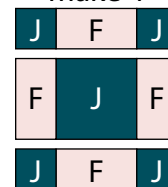


Fig. 7

Block Eight
make 4

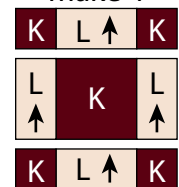


Fig. 8

TARRYTOWN

Quilt 2

Block Nine
make 2

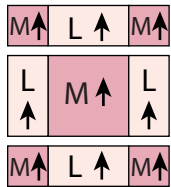


Fig. 9

Block Ten
make 2

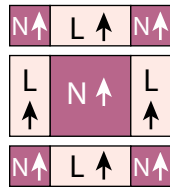


Fig. 10

Block Eleven
make 1

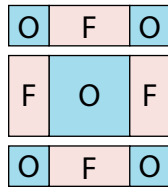


Fig. 11

Quilt Top Assembly

(Follow the *Quilt Layout* while assembling the quilt top.)

3. Refer to the quilt layout for block placement to sew together the (41) assorted blocks and (40) 6 1/2" Fabric P squares to make (9) Rows.

4. Sew the (9) rows together to make the Center Block.

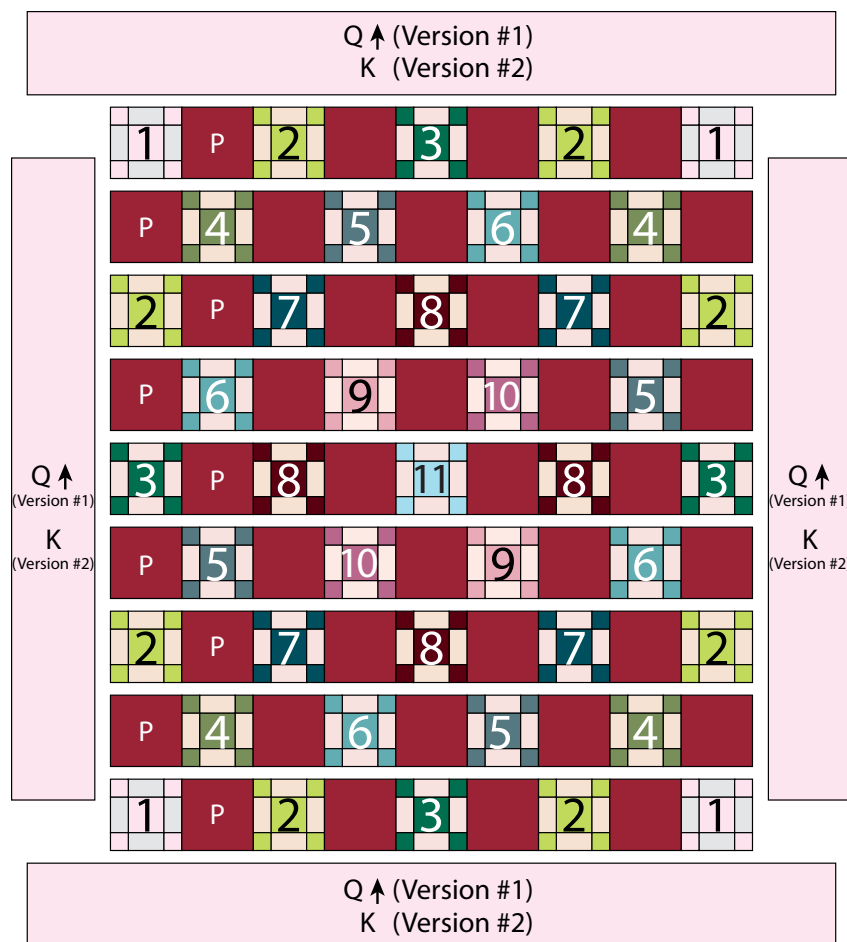
5. **For Version #1:** Sew (1) 7 1/2" x 54 1/2" Fabric Q strip to each side of the Center Block. Sew (1) 7 1/2" x 68 1/2" Fabric Q strip to the top and bottom of the Center Block.

For Version #2: Sew (1) 7 1/2" x 54 1/2" Fabric K strip to each side of the Center Block. Sew (1) 7 1/2" x 68 1/2" Fabric K strip to the top and bottom of the Center Block.

6. Layer and quilt as desired.

7. Sew the (7) 2 1/2" x WOF Fabric Q for Version #1 (or Fabric K for Version #2) together, end to end with 45-degree seams, to make the binding. Fold this long strip in half lengthwise with wrong sides together and press.

8 Bind as desired.



Quilt Layout

Every effort has been made to ensure that all projects are error free. All the information is presented in good faith, however no warranty can be given nor results guaranteed as we have no control over the execution of instructions. Therefore, we assume no responsibility for the use of this information or damages that may occur as a result. When errors are brought to our attention, we make every effort to correct and post a revision as soon as possible. Please make sure to check www.henryglassfabrics.net for pattern updates prior to starting the project. We also recommend that you test the project prior to cutting for kits. Finally, all free projects are intended to remain free to you and are not for resale.