

michael miller FABRICS

CABIN IN THE WOODS

SIZE: 68"W X 68"H • LEVEL: ADVANCED BEGINNER • PATTERN BY: MARSHA EVANS MOORE • WILD THING



THIS IS A DIGITAL REPRESENTATION OF THE QUILT TOP, FABRIC MAY VARY.

PLEASE NOTE: BEFORE BEGINNING YOUR PROJECT, CHECK FOR ANY PATTERN UPDATES AT MICHAELMILLERFABRICS.COM'S FREE PROJECTS SECTION.

p.212.704.0774 | info@michaelmillerfabrics.com | www.michaelmillerfabrics.com



Cabin in the Woods



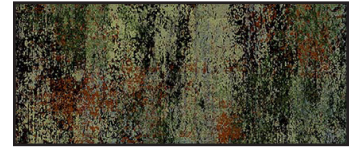
FABRIC A
DCX9293_Multi
1 Panel



FABRIC B
DCX9294_Multi
3/4 yard



FABRIC C
DCX9297_Multi
1-1/8 yard



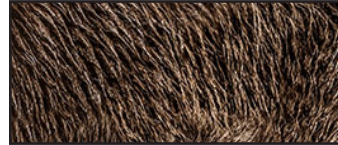
FABRIC D
DCX9298_Green
1/8 yard



FABRIC E
DCX9299_Gold
1/4 yard



FABRIC F
DCX9301_Gray
3/8 yard



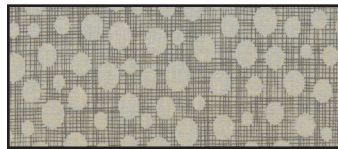
FABRIC G
DCX9301_Brown
1/4 yard



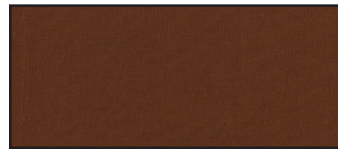
FABRIC H
DCX9302_Brown
5/8 yard



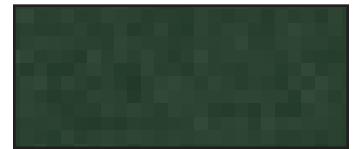
FABRIC I
DCX9303_Beige
1/8 yard



FABRIC J
CX6699_Taupe
7/8 yard



FABRIC K
SC5333_Cappuccino
1/2 yard
(binding)



FABRIC L
SC5333_Cypress
3/4 yard



Cabin in the Woods

WOF = width of fabric

KEY	CUTTING INSTRUCTIONS
A	Centering panels, cut (8) 10-1/2" squares.
B	Centering animal motifs, cut (5) 10-1/2" squares.
C	(7) 4-1/2" x WOF strips; sew ends together and subcut (2) 4-1/2" x 68" borders and (2) 4-1/2" x 60" borders.
D	(2) 2" x WOF strips; subcut (24) 2" squares.
E	(3) 2" x WOF strips; subcut (24) 2" x 4-3/4" strips.
F	(5) 2" x WOF strips; subcut (24) 2" x 7-5/8" strips.
G	(3) 2" x WOF strips; subcut (24) 2" x 4-3/4" strips.
H	(6) 2" x WOF strips; subcut (24) 2" x 7-5/8" strips and (12) 2" squares. (2) 1-3/4" x 42"; subcut (36) 1-3/4" squares.
I	(2) 2" x WOF strips; subcut (24) 2" squares.
J	(15) 1-3/4" x WOF strips; subcut (60) 1-3/4" x 10-1/2" strips.
K	FOR BINDING: (7) 2-1/4" x WOF strips; trim ends diagonally; sew short ends together.
L	(7) 2" x WOF strips; subcut (144) 2" squares. (6) 1-1/2" x WOF strips; sew ends together; subcut (2) 1-1/2" x 60" borders and (2) 1-1/2" x 58" borders.

ADDITIONAL MATERIALS

4-1/4 yards backing fabric

76" x 76" batting

Thread to match fabrics

Sewing machine

Rotary cutter, ruler and mat

Basic sewing supplies

Cabin in the Woods

Use a slightly wider than 1/4" seam allowance to make a log cabin block that is 10-1/2" square. Most all purpose straight stitch or zigzag presser feet are slightly wider than 1/4". Measure your presser foot to check the width of your seam allowance with the edge of foot along the edge of the fabric.

LOG CABIN BLOCK

1. Sew (1) fabric **I** 2" square to (1) fabric **H** 2" square. Sew (1) fabric **D** 2" square to the opposite side of the fabric **H** square. Make 12.
2. Sew (2) fabric **L** 2" squares to sides of (1) fabric **I** 2" square. Make 12.
3. Sew (2) fabric **L** 2" squares to sides of (1) fabric **D** 2" square. Make 12.
4. Sew the **L/I** and **L/D** square units to the top and bottom of the **I/H/D** square unit matching seams to make a center square. Center square should measure 4-3/4" square, including seam allowance.
5. Sew (1) fabric **E** 2" x 4-3/4" strip and (1) fabric **G** 2" x 4-3/4" strip to sides of center square.
6. Sew (2) fabric **L** 2" squares to the ends of (1) fabric **E** 2" x 4-3/4" strip and (1) fabric **G** 2" x 4-3/4" strip. Sew to top and bottom of log cabin center, matching seams.
7. Sew (1) fabric **F** 2" x 7-5/8" strip and (1) fabric **H** 2" x 7-5/8" strip to sides of center square.
8. Sew (2) fabric **L** 2" squares to the ends of (1) fabric **F** 2" x 7-5/8" strip and (1) fabric **H** 2" x 7-5/8" strip. Sew to top and bottom of log cabin center, matching seams. Block should measure 10-1/2" square. Make 12.



Steps 5 and 6



Make 12 each

Steps 7 and 8



Make 12 each



Make 12

Cabin in the Woods

QUILT ASSEMBLY

9. Sew (1) fabric **A** 10-1/2" square, (2) fabric **B** 10-1/2" squares and (2) log cabin blocks alternating with (6) fabric **J** 1-3/4" x 10-1/2" strips as shown to make block row 1. Note the orientation of the log cabin blocks. Follow the Quilt Layout on page 5 to make block rows 2-5. Make 1 each.

Row 1



10. Sew (6) fabric **H** 1-3/4" squares alternating with (5) fabric **J** 1-3/4" x 10-1/2" strips to make the sashing rows. Make 6.



Make 6

11. Sew (6) sashing rows and (5) block rows together to make the quilt center.

BORDERS

12. Sew (1) fabric **L** 1-1/2" x 58" border to sides of quilt. Sew (1) fabric **L** 1-1/2" x 60" border to top and bottom of quilt.

13. Sew (1) fabric **C** 4-1/2" x 60" border to sides of quilt. Sew (1) fabric **C** 4-1/2" x 68" border to top and bottom of quilt.

Cabin in the Woods

QUILT LAYOUT



FINISHING: Layer quilt top, batting and backing together to form quilt sandwich. Baste and quilt as desired. Bind using (7) fabric **K** 2-1/4" strips sewn together.