



CONFIDENT BEGINNER | 1 DAY CLASS

# SHORELINE STORIES WITH A CURVE

Finished Quilt: 56" x 70"

Quilt design by Lisa Moore of Quilts With a Twist, featuring Shoreline Stories, a Hoffman Spectrum Digital Print collection.

The simple, yet effective design is easy to make, even if you have not sewn curves before.



S4705 18-Royal



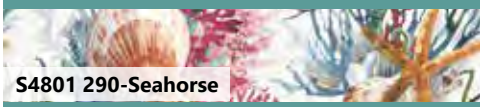
S4798 484-Seaside



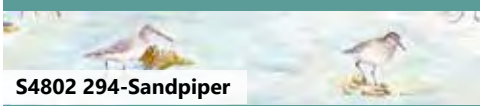
S4799 207-Sea Breeze



S4800 511-Bluff



S4801 290-Seahorse



S4802 294-Sandpiper



885 469-Nasturtium

FABRICS	1 KIT
S4705 18-Royal	2 Yards*
S4798 484-Seaside	1 Panel
S4799 207-Sea Breeze	3/4 Yard
S4800 511-Bluff	3/4 Yard
S4801 290-Seahorse	2/3 Yard
S4802 294-Sandpiper	1/3 Yard
885 469-Nasturtium	1 Yard

\* includes binding

FREE PATTERN DOWNLOAD

[HoffmanFabrics.com](http://HoffmanFabrics.com)

# Shoreline Stories With a Curve

a free pattern by Lisa Moore, **Quilts With a Twist**

This free pattern is brought to you by Hoffman California Fabrics. The large blocks show off the focal fabrics of Shoreline Stories. Lisa uses clever techniques for installing the accent fabric and curves. There were many good choices for the background fabric. Options are given on Page 5. The fabrics used on the cover quilt are given in the yardage below.

YARDAGE	Lap Size (58" x 70")
<b>Scenic Panel</b> (S4798-484-Seaside)	1 panel (30" x 42")
<b>Fabric 1, Sailboats</b> (S4799-207-Sea-Breeze)	3/4 yard
<b>Fabric 2, Lighthouses</b> (S4800-511-Bluff)	3/4 yard
<b>Fabric 3, Sealife</b> (S4801-290-Seahorse)	2/3 yard
<b>Fabric 4, Birds</b> (S4802-294-Sandpiper)	1/3 yard
<b>Accent</b> (885 469-Nasturtium)	1 yard
<b>Background and Binding</b> (S4705-18-Royal)	2 yards
See Page 5 for optional background fabrics.	
<b>Backing</b>	3 3/4 yards or 5 1/4 yards (if directional)

**CUTTING INSTRUCTIONS**  
 Note: Cut the tall pieces first. Fussy cut Fabrics 1-4. The numbers (#) refer to the block numbering. See Pages 3 and 4 for the block layout.

**SCENIC PANEL** - Cut 28 1/2" wide and 40 1/2" tall

**FABRIC 1, Sailboats**  
 #7 Cut one piece 10 1/2" wide x 18 1/2" tall  
 #3 Cut one piece 20 1/2" wide x 10 1/2" tall  
 #10 Cut one piece 18 1/2" wide x 10 1/2" tall

**Fabric 2, Lighthouses**  
 #5 Cut one piece 10 1/2" wide x 20 1/2" tall  
 #1 Cut one piece 10 1/2" wide x 19 1/2" tall  
 #8 Cut one piece 20 1/2" wide x 10 1/2" tall

**Fabric 3, Sealife**  
 #2 Cut one piece 10 1/2" wide x 19 1/2" tall  
 #6 Cut one piece 10 1/2" square

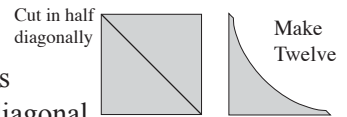
**Fabric 4, Birds**  
 #4 Cut one piece 18 1/2" wide x 10 1/2" tall  
 #9 Cut one piece 10 1/2" square

**Accent Fabric**  
 Cut one 6 1/2" strip. Measure over 6 1/2" and mark. Cut from corner to mark. Cut twelve 1" diagonal strips as shown. These are bias strips. The remaining strips are cut on the **straight of grain**, not cross grain, so there is no stretch in the strips. Cut twenty-six 1" strips x about 29" (block accents) Cut ten 1 1/4" x about 29" strips (binding accent)



## Background

Cut one 5 1/2" strip  
 Cut into six 5 1/2" squares



Cut each square on the diagonal  
 Use Template A to cut a curve onto each half square  
 Cut six 2 1/2" strips  
 Cut two strips into six 10 1/2" x 2 1/2" pieces  
 Cut seven 3 1/2" strips for outer border

## Binding

Cut seven 2 1/2" strips (or your favorite width for binding)

## DIRECTIONS - Order of piecing

1. Add accents to blocks and panel using a 1/2" seam allowance.
2. Construct curved corners, then attach to blocks and panel.
3. Connect blocks into units using sashing.
4. Final assembly.
5. The final accent strip is added after quilting the project and before the binding.

Use a **scant 1/4"** seam allowance for traditional piecing. Press toward sashing and borders.

## ADD ACCENT STRIPS

**Use a 1/2" seam allowance for this.**

Add accent strips to all four sides of each block and the panel as follows:

Use the 1" strips of accent fabric. Pin and sew to top and bottom, using a 1/2" seam allowance. Press outward. Repeat for the sides. This will result in a 1/4" accent strip when blocks are sewn. See Drawings below. You may either cut to fit after sewing, or cut to fit before pinning. You will need to join two strips for the panel sides. Use a diagonal seam.

For the corner that will have the curve installed, make the strips 3" shorter. For each block, refer to the drawings on Pages 3 and 4, and mark the corner with the curve using a pin or another method of choice. This is shown below.

If you are using cross grain strips, be very careful not to stretch the strips when you sew as this will result in smaller blocks.



Use a 1/2" seam allowance. Add accent strips to top and bottom of each block. Trim to fit. Press outward.

Repeat for the sides. Do this for all blocks and the panel.

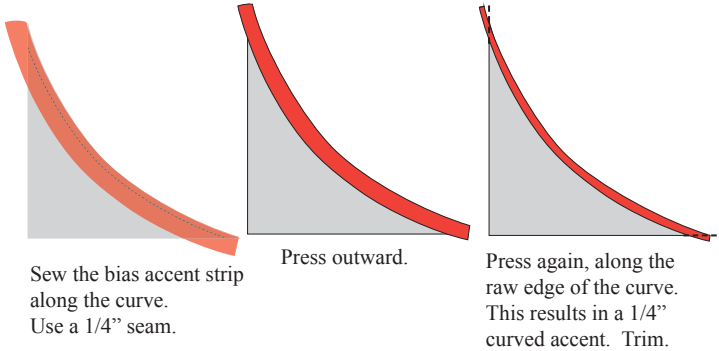


## BLOCK CORNER PIECES - MAKE 12

Use the 5 1/2" squares, cut on the diagonal, and with a curve cut along the diagonal line.

Sew a 1" bias strip of accent fabric along the curve of each half square. Pin the accent fabric on the curve and sew a 1/4" seam with the accent fabric on top. Press outward, toward the seam allowance. Press a second time, pressing over the raw edges. Trim excess length of the accent even with the block.

Repeat this for all twelve curved half square triangles.



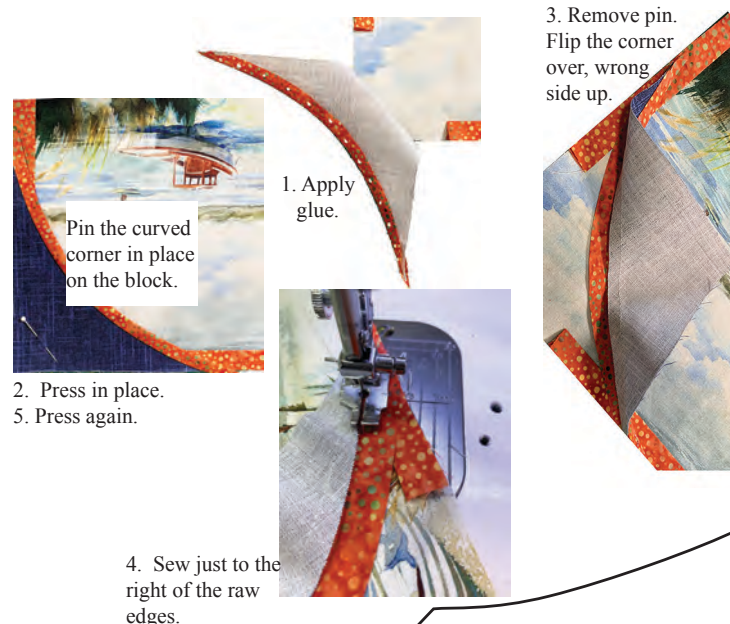
## SEW CURVED HALF SQUARE TRIANGLES ONTO BLOCKS

Pin the curved half square triangle with accent strip to the blocks and the panel in the appropriate locations. Refer to the Quilt Layout Drawing on Page 4.

There are two options for sewing corners to the blocks.

**Option 1** - This is my preferred method.

1. Apply glue to the seam allowance of the accent strip (the 1/2" under the fold).
  2. Press in place. Remove pin.
  3. Flip the corner over along the diagonal curve.
  4. Sew just to the right of the raw edges.
  5. Flip the corner back in place and press.
- This method results in no visible stitching.



**Option 2** - Stitch along the fold. There are three options.

1. Topstitch with a straight stitch, shown here.
2. Applique with a blind hem stitch.
3. Hand applique.



Square up the block if required. You may want to check the dimensions of the block and compare them to the cut dimensions. If the block shrinks a bit due to the stitching of the accent, just be sure to sew the next seams with a smaller seam allowance than measure the units. It is easier to sew with a smaller seam allowance than to rip out the seam and start over.

You may choose to remove the excess layer behind the curved corner.

Sort blocks in the order of use: #1 - #10.

## JOIN BLOCKS INTO UNITS

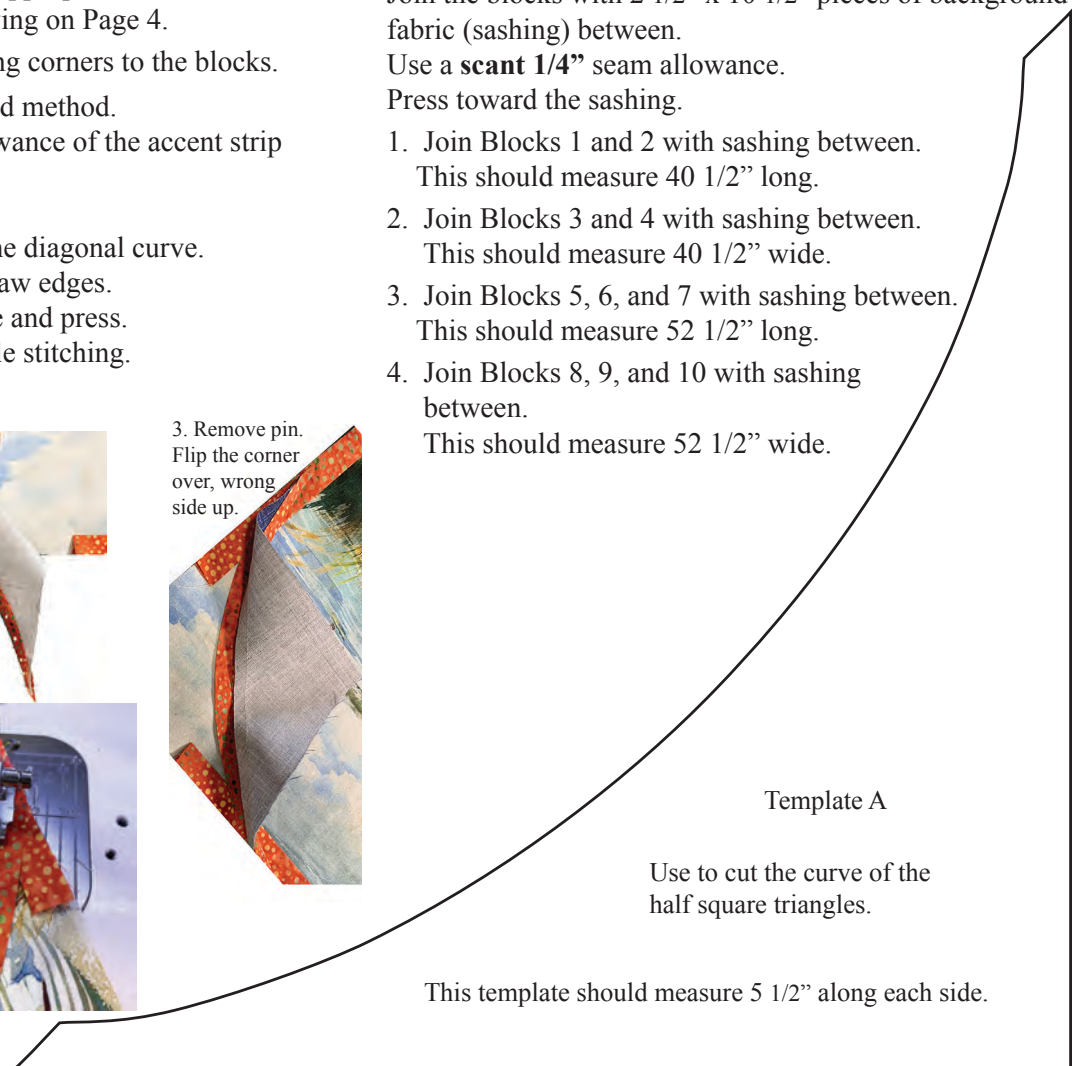
Refer to the exploded diagram on Page 3.

Join the blocks with 2 1/2" x 10 1/2" pieces of background fabric (sashing) between.

Use a **scant 1/4"** seam allowance.

Press toward the sashing.

1. Join Blocks 1 and 2 with sashing between. This should measure 40 1/2" long.
2. Join Blocks 3 and 4 with sashing between. This should measure 40 1/2" wide.
3. Join Blocks 5, 6, and 7 with sashing between. This should measure 52 1/2" long.
4. Join Blocks 8, 9, and 10 with sashing between. This should measure 52 1/2" wide.







# Quilt Layout Drawing





## FINAL ASSEMBLY

Refer to the drawings on Pages 3 and 4.

For each step, pin and sew. Use a **scant 1/4"** seam allowance. Press toward the background.

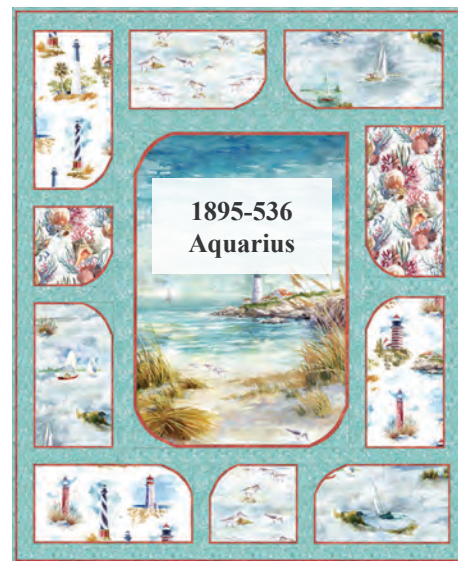
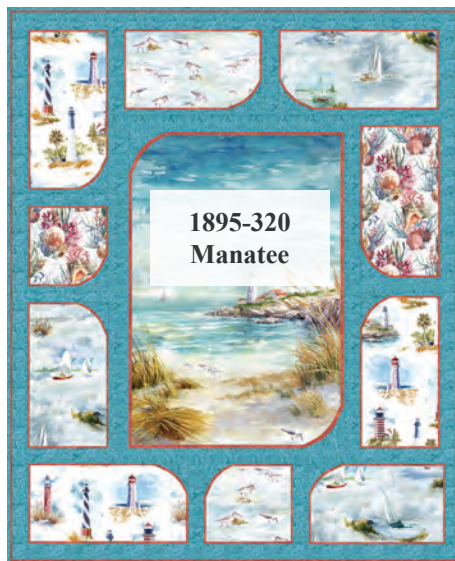
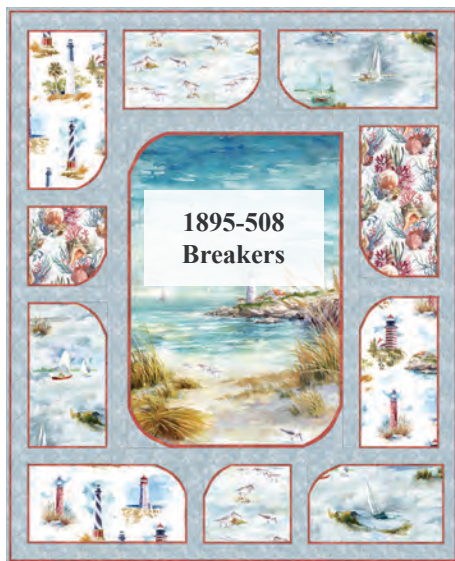
There are two options for adding the sashing. Sashing is the 2 1/2" strip of background fabric.

**Option 1:** Cut the sashing to the length given before sewing.

**Option 2:** Cut the sashing to fit after sewing and pressing.

1. Add 40 1/2" sashing to the right side of the panel.
2. Add Block Unit 1,2.
3. Add 40 1/2" sashing to the top.
4. Add Block Unit 3,4.
5. Add 52 1/2" sashing to the left. You will need to join two sashing strips to get the 52 1/2" length.
6. Add Block Unit 5,6,7.
7. Add 52 1/2" sashing below. Join two sashing strips to get the 52 1/2" length.
8. Add Block Unit 8,9,10.

Optional Background Colors are given below:



Lisa Moore is a retired electrical engineer living on beautiful Silver Bay in Sitka, Alaska. She is a member of New Archangel Dancers, a Russian Folk Dance group, Alaska Community Forest Council, and Sitka Tree & Landscape Committee. Lisa is married to a retired Coast Guard helicopter pilot. They enjoy living in a small island town in Alaska and all that it has to offer. They have an incredibly sweet tiny black lab named Mist.

You can find other patterns by Lisa at [quiltswithatwist.com](http://quiltswithatwist.com)

## ADD FINAL BORDERS

Sew the 3 1/2" strips of final border fabric together, end to end, to make one long strip. Use vertical seams. Pin, then sew these strips to the sides, then top and bottom, of the quilt center, trimming to fit. Press toward the border fabric.

## FINISHING

1. Prepare the backing, baste layers together, and quilt as desired. I quilted using parallel rows of wavy lines, about 1/2" apart, across the quilt top from side to side. I used a 50 weight thread in light blue to give the wavy texture.
2. Square up the quilted piece. Trim to 3" from the seam of the final border.
3. Sew the 1 1/4" strips of accent fabric together, end to end, to make one long strip. Sew with a 5/8" seam allowance to the sides, then top and bottom of the quilt, press outward. When the binding is installed, this will be the binding accent.
4. Make a label and attach to the back of the quilt. I use a 5" square of fabric, folded on the diagonal, and placed in a corner before binding is installed.
5. Attach binding using your favorite method. You may want to sew the binding from the back, bring to the front and machine stitch along the folded edge.

Lisa would like to thank Hoffman California Fabrics for designing and producing amazing fabric!

Also for sending early JPEGs of the fabrics for designing the project, as well as the box of lovely fabric to make the quilt. And much appreciation to Sandy for the thoughtful input during the design process.

A note about the copyright. This is a free pattern, designed for individual use only.



# Shoreline Stories With a Curve Quilt Photo

