

MAYWOOD  STUDIO

LEXINGTON QUILT



Lexington Quilt by Maywood Studio
featuring the Lexington Collection

66 x 76

#madewithmaywood
maywoodstudio.com



MAYWOOD STUDIO



Fabric 1
MAS9852-E



Fabric 2
MAS9856-P



Fabric 3
MAS9852-G



Fabric 4
MAS9850-R



Fabric 5
MAS9853-T



Fabric 6
MAS9856-G



Fabric 7
MAS9853-R



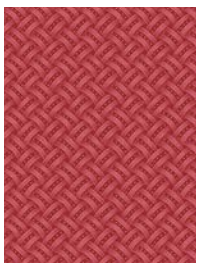
Fabric 8
MAS9852-T



Fabric 9
MAS9852-R



Fabric 10
MAS9853-E



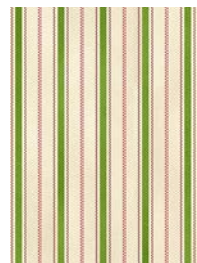
Fabric 11
and Binding
MAS9858-R



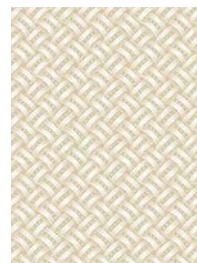
Fabric 12)
MAS9858-G



Fabric 13
MAS9857-EP



Fabric 14
MAS9857-TG



Fabric 15
MAS9858-E



Fabric 16
MAS9850-G

Fabric Requirements

Fabric 1	9852-E	Fat Quarter
Fabric 2	9856-P	Fat Quarter
Fabric 3	9852-G	Fat Quarter
Fabric 4	9850-R	Fat Quarter
Fabric 5	9853-T	Fat Quarter
Fabric 6	9856-G	Fat Quarter
Fabric 7	9853-R	Fat Quarter
Fabric 8	9852-T	Fat Quarter
Fabric 9	9852-R	Fat Quarter
Fabric 10	9853-E	Fat Quarter
Fabric 11	9858-R	1 yard
Fabric 12	9858-G	1/2 yard
Fabric 13	9857-EP	5/8 yard
Fabric 14	9857-TG	5/8 yard
Fabric 15	9858-E	1/2 yard
Fabric 16	9850-G	1-1/3 yards
Binding	included in Fabric 11	
Backing	your choice	4 yards

Cutting

Finished Size 66" x 76"

Fabrics 1, 2, 3, 4, 5, 6, 7, 8, 9, 10

A: From each fat quarter cut:
(3) 5-1/2" x 10-1/2" rectangles

Fabric 11

Cut (8) 1-1/2" x WOF Strips
Subcut into
B: (30) 1-1/2" x 10-1/2" rectangles

Binding

Cut (8) 2-1/2" x WOF strips

Fabric 12

Cut (8) 1-1/2" x WOF Strips
Subcut into
C: (30) 1-1/2" x 10-1/2" rectangles.

Fabric 13

Cut (8) 2" x WOF Strips
Subcut into
D: (30) 2" x 10-1/2" rectangles.

Fabric 14

Cut (8) 2" x WOF Strips
Subcut into
E: (30) 2" x 10-1/2" rectangles.

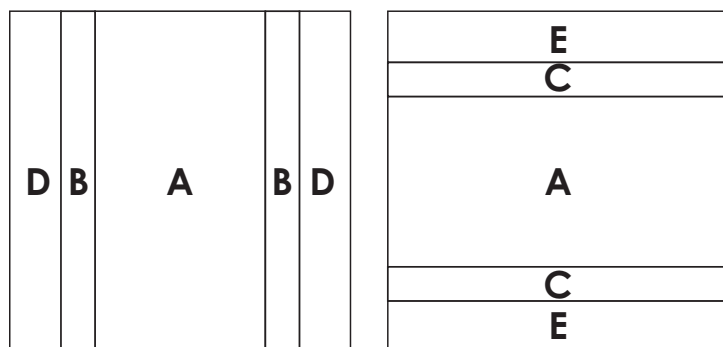
Fabric 15

Cut (6) 2-1/2" x WOF strips.
Piece into the inner borders
(2) 2-1/2" x 54-1/2"
(2) 2-1/2" x 60-1/2"

Fabric 16

Cut (7) 6-1/2" x WOF strips
Piece into the outer border
(2) 6-1/2" x 64-1/2"
(2) 6-1/2" x 66-1/2"

Blocks
10-1/2" x 10-1/2"



A Block
15 Total

B Block
15 total

WOF - Width of Fabric
LOF - Length of Fabric
RST - Right Sides Together
HST - Half Square Triangle

Lexington Quilt Instructions

Please read all instructions before you begin.

Seam allowance is 1/4" unless otherwise stated.

Fabric will be abbreviated to 'F'.
For example, F11 refers to Fabric 11.

Make the A Blocks

1. Sew a F11-B rectangle to opposite sides of a F1-A rectangle. Press away from center.
2. Sew a F13-D rectangle to opposite sides of the A-B unit. Press away from center. Block finishes at 10-1/2" x 10-1/2". Make 3.



F11-B - **F1-A** - F11-B



F13-D - B/A/B - F13-D



D/B/A/B/D
10-1/2" x 10-1/2"
Make 3

Repeat steps 1 and 2 to make the following A Blocks, sewing the F13-D and F11-B to opposite sides of the A rectangles in Fabrics 3, 5, 7, and 9.



D/B - **F3-A** - B/D
Make 3



D/B - **F5-A** - B/D
Make 3



D/B - **F7-A** - B/D
Make 3



D/B - **F9-A** - B/D
Make 3

Make the B Blocks

1. Sew a F12-C rectangle to opposite sides of a F2-A rectangle. Press away from center.
2. Sew a F14-E rectangle to opposite sides of the C/A/C unit. Press away from center. Block finishes at 10-1/2" x 10-1/2". Make 3.



F12-C - **F2-A** - F12-C



F14-E - C/A/C - F14-E



E/C/A/C/E
10-1/2" x 10-1/2"
Make 3

Repeat steps 1 and 2 to make the following B Blocks, sewing the F12-C and F14-E rectangles to opposite sides of the A rectangles in Fabrics 4, 6, 8, and 10.



E/C - **F4-A** - C/E
Make 3



E/C - **F6-A** - C/E
Make 3



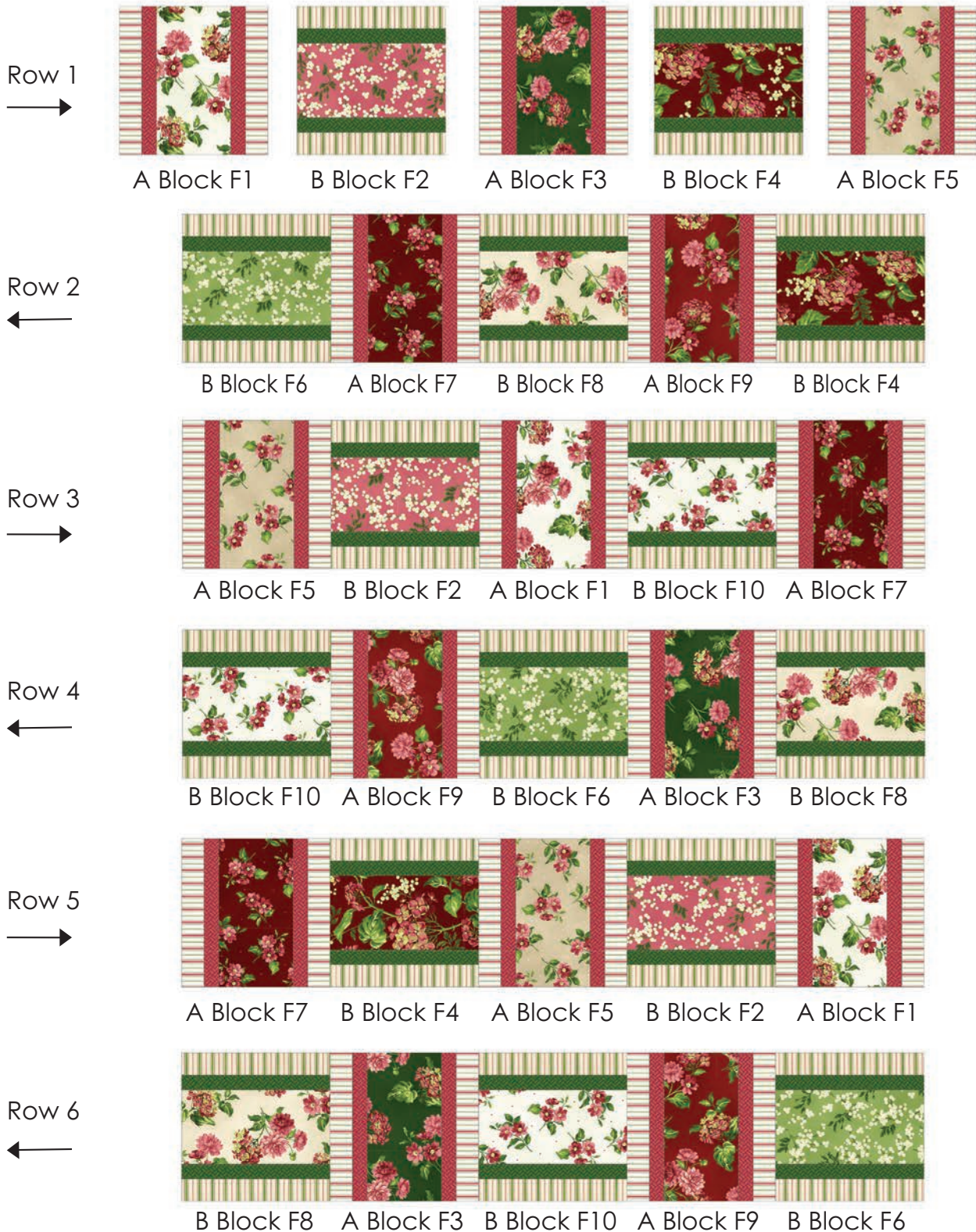
E/C - **F8-A** - C/E
Make 3



E/C - **F10-A** - C/E
Make 3

Assemble the Quilt Center:

Lay the blocks out in the following rows of 5 alternating A and B blocks as illustrated below. Sew the blocks into rows. Press each row in the opposite direction to nest the seams. Sew row to row. Press in one direction. Quilt center will measure 50-1/2" x 60-1/2".



Borders

1. Sew the F15 60-1/2" border strips to the sides of the quilt center. Press away from center.
2. Sew the F15 54-1/2" border strips to the top and bottom of the quilt center. Press away from center.
3. Sew the F16 64-1/2" border strips to the sides of the quilt. Press toward center.
4. Sew the F16 66-1/2" border strips to the top and bottom of the quilt. Press toward center.



Finishing

1. Layer the backing (wrong side up), batting and quilt top (right side up). Baste layers together to secure. Quilt as desired. Trim the excess backing and batting.
2. Sew the F11 binding strips together into one continuous strip. Press in half length-wise. Sew the binding to the quilt top with a 3/8" seam allowance, mitering the corners. Turn the binding to the back side of the quilt and stitch down by hand with matching thread.

Lexington Quilt Planning Diagram

