

Quilt 1

My Red Wagon

by Debbie Busby



Quilt design by Denise Russell.

Quilt size: 48" x 68" Skill Level: Advanced Beginner

 **Henry Glass & Co., Inc.**

49 West 37th Street
New York, NY 10018
Tel: 212-686-5194 - Fax: 212-532-3525
Toll Free: 800-294-9495 - www.henryglassfabrics.com

facebook

Free Project
NOT FOR RESALE



My Red Wagon

Fabrics in the Collection



2556-88 Border Stripe - Red



2557P-Red Wagon Calendar Panel - Red



2558P-88 Banner Panel - Red



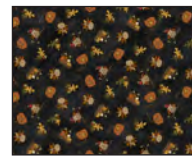
2540-75 Novelty Toss
Winter - Lt. Blue



2541-66 Novelty Toss
Spring- Green



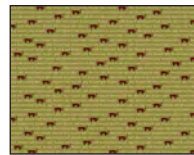
2542-44 Novelty Toss
Summer - Cream



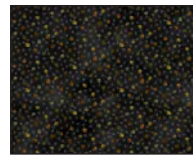
2543-99 Novelty Toss
Fall - Black



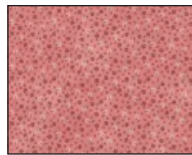
2544-44 Words Red
Wagon - Cream



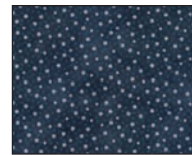
2544-66 Words Red
Wagon - Green



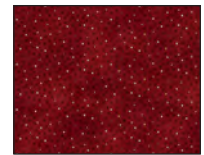
2545-99 Small Leaves
Black



2546-22 Small Flowers
Pink



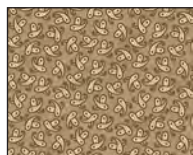
2547-77 Small
Snowflakes - Navy



2548-88 Small Stars
Red



2550-88 Paisley Winter
Red



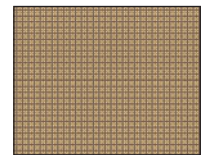
2551-33 Paisley Spring
Cocoa



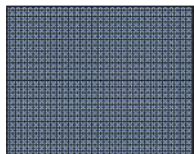
2552-77 Paisley Summer
Navy



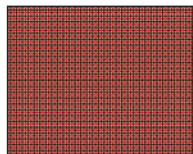
2553-35 Paisley Fall
Rust



2554-44 Plaid
Checkerboard - Tan

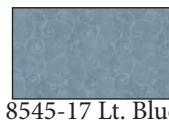


2554-77 Plaid
Checkerboard - Navy

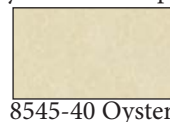


2554-88 Plaid
Checkerboard - Red

Selected fabrics from the Whimsy Basic Collection
by Color Principle



8545-17 Lt. Blue



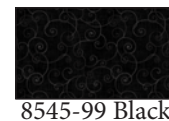
8545-40 Oyster



8545-66 Olive



8545-88 Red



8545-99 Black

My Red Wagon - Quilt 1

Materials

Yardages and cutting instructions are based on 42" of usable fabric width.

1 panel 2558P-88 Banner Panel - Red
1/8 yard 2547-77 Small Snowflakes - Navy
1/8 yard 2551-33 Paisley Spring - Cocoa
1/8 yard 2540-75 Novelty Toss Winter - Lt. Blue
1/8 yard 2552-77 Paisley Summer - Navy
1/8 yard 2542-44 Novelty Toss Summer - Cream
1/8 yard 2550-88 Paisley Winter - Red
1/8 yard Whimsy Basic - 8945-17 - Lt. Blue
1/8 yard Whimsy Basic - 8945-66 - Olive
1/8 yard 2541-66 Novelty Toss Spring - Green
1/8 yard 2554-77 Plaid Checkerboard - Navy
1/3 yard Whimsy Basic - 8945-88 - Red
3/8 yard Whimsy Basic - 8945-40 - Oyster
3/8 yard 2543-99 Novelty Toss Fall - Black
3/8 yard 2548-88 Small Stars - Red
1/2 yard 2545-99 Small Leaves - Black
5/8 yard Whimsy Basic - 8945-99 - Black
3/4 yard 2554-44 Plaid Checkerboard - Tan
2-1/8 yards 2556-88 Border Stripe - Red
3-1/4 yards 2553-35 Paisley Fall - Rust for backing
56" x 76" piece of Air Lite batting

Cut Fabrics

Notes:

a. All strips are cut across the width of the fabric (WOF) from selvage to selvage unless otherwise noted. If cut across the length of the fabric (LOF), the LOF notation will be indicated.

b. If the panel cannot be cut as requested due to its printing, trim it the best you can and then increase the width of the first border so that the quilt center measures 24-1/2" x 44-1/2" after the addition of border 1. There is extra fabric in the yardage of the Red fabric for this eventuality.

From 2558P-88 Banner Panel - Red:

*Trim panel to 22" x 43-1/2" (see note *b* above).

From 2547-77 Small Snowflakes - Navy:

*Cut one 2-7/8" x WOF strip. Sub-cut eight 2-7/8" squares; cut once diagonally. (A)

From each:

2551-33 Paisley Spring - Cocoa

2540-75 Novelty Toss Winter - Lt. Blue

2552-77 Paisley Summer - Navy

2542-44 Novelty Toss Summer - Cream

*Cut one 2-1/2" x WOF strip. Sub-cut six 2-1/2" x 4-1/2" rectangles.

From each:

2550-88 Paisley Winter - Red

Whimsy Basic - 8945-17 - Lt. Blue

*Cut one 2-1/2" x WOF strip. Sub-cut seven 2-1/2" x 4-1/2" rectangles.

From Whimsy Basic - 8945-66 - Olive:

*Cut one 2-1/2" x WOF strip. Sub-cut four 2-1/2" x 4-1/2" rectangles.

From each:

2541-66 Novelty Toss Spring - Green

2554-77 Plaid Checkerboard - Navy

*Cut one 2-1/2" x WOF strip. Sub-cut five 2-1/2" x 4-1/2" rectangles.

From Whimsy Basic - 8945-88 - Red:

*Cut two 1" x WOF strips (border 1, top/bottom).

*Cut three 1-3/4" x WOF strips (border 1, sides).

From Whimsy Basic - 8945-40 - Oyster:

*Cut five 1-1/2" x WOF strips. Sub-cut 136 1-1/2" squares.

*Cut one 3-1/4" x WOF strip. Sub-cut four 3-1/4" squares; cut twice diagonally. (B)

From 2543-99 Novelty Toss Fall - Black:

*Cut one 2-1/2" x WOF strip. Sub-cut six 2-1/2" x 4-1/2" rectangles and four 2-1/2" squares.

*Cut one 4-7/8" x WOF strip. Sub-cut two 4-7/8" squares.

From 2548-88 Small Stars - Red:

*Cut one 2-1/2" x WOF strip. Sub-cut six 2-1/2" x 4-1/2" rectangles.

*Cut five 1-1/2" x WOF strips for border 3.

My Red Wagon - Quilt 1

From 2545-99 Small Leaves – Black:

*Cut one 2-1/2" x WOF strip. Sub-cut four 2-1/2" x 4-1/2" rectangles.

*Cut six 1-1/2" x WOF strips for border 7.

From Whimsy Basic - 8945-99 – Black:

*Cut six 2-1/2" x WOF strips for binding.

From 2554-44 Plaid Checkerboard – Tan:

*Cut one 4-7/8" x WOF strip. Sub-cut two 4-7/8" squares.

*Cut eleven 1-1/2" x WOF strips: five for border 4 and six for border 6.

From 2556-88 Border Stripe – Red:

*Fussy-cut into 4-1/2" wagon strips.

Assemble Blocks

Note: Measurements include 1/4" seam allowances. Sew with right sides together unless otherwise stated. If no direction is specified, press seams toward the darker fabric.

1. Draw a diagonal line on the wrong side of the 1-1/2" Whimsy Basic - 8945-40 - Oyster squares. With right sides together, place one marked Oyster square on a corner of one 2-1/2" x 4-1/2" 2545-99 Small Leaves - Black rectangle and stitch on the drawn line. Trim the seam allowance to 1/4" and press open. Repeat with the adjacent corner of the same rectangle. Repeat to make four units. In the same manner, sew two marked Oyster squares to each of the 2-1/2" x 4-1/2" Whimsy Basic - 8945-66 – Olive rectangles. Sew the Black and the Olive units together to make four 4-1/2" blocks (*figure 1*). Press the seams open.

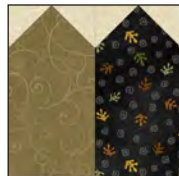


Figure 1 – Make 4.

2. Repeat step 2 with the remaining 1-1/2" Whimsy Basic - 8945-40 - Oyster squares and the assorted 2-1/2" x 4-1/2" rectangles to make the 4-1/2" blocks shown in Table 1.

<p>Block 2 – Make 5.</p>	<p>Block 3 – Make 6.</p>	<p>Block 4 – Make 6.</p>
<p>Block 5 – Make 6.</p>	<p>Block 6 – Make 7.</p>	

Table 1. Block colorway and quantity.

My Red Wagon - Quilt 1

3. Draw a diagonal line on the wrong side of the two 4-7/8" 2554-44 Plaid Checkerboard - Tan squares. With right sides together, layer the marked Plaid squares atop the 4-7/8" 2543-99 Novelty Toss Fall - Black squares. Stitch 1/4" on each side of the marked line, cut on the drawn line, press each unit open with seams toward dark fabric, and trim dog ears (*figure 2*). Make four 4-1/2" half-square triangles (HST).

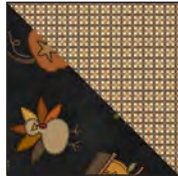


Figure 2 – Make 4.

4. Fold one 2-1/2" 2543-99 Novelty Toss Fall – Black square in half with right sides together. Mark the center on opposite sides of the square. Fold two Whimsy Basic - 8945-40 – Oyster triangles B with wrong sides together and crease to mark the center. Nesting the centers, sew the Oyster triangles to opposite sides of the Black square. Press the seams open. In the same manner, sew two more Oyster triangles B to the other sides of the same square (*figure 3*). Press open and trim ears. Repeat to make four units.

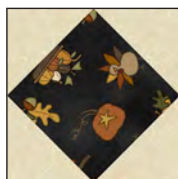


Figure 3 – Make 4.

5. Repeat step 4 using its four units and the 2547-77 Small Snowflakes – Navy triangles A (*figure 4*) to make four 4-1/2" blocks.



Figure 4

Assemble Quilt Top

6. For border 1, join the three 1-3/4" Whimsy Basic - 8945-88 - Red strips end to end using diagonal seams.

Stitch the border strip to one side of the quilt and trim the extra length. Repeat with the other side. Press the seams toward the border. Measure the width of the quilt top through the center. Cut two 1" Whimsy Basic - 8945-88 - Red border strips that length and sew one to the top and one to the bottom of the quilt top. Press the seams toward the borders. The quilt measures 24-1/2" x 44-1/2" up to here.

7. For border 2, and referring to the quilt photo for block placement, arrange eleven blocks for each side of the quilt. Sew blocks together and sew one border strip to each side of the quilt center. Press the seams toward the quilt center.

8. Repeat step 7 with the remaining blocks, as well as the step 5 blocks, and sew one border strip to the top and one to the bottom of the quilt center.

9. For border 3, sew five 1-1/2" 2548-88 Small Stars - Red strips together end to end using diagonal seams. Measure the vertical length of the quilt top through the center and cut two border strips that length. Sew strips to the sides of the quilt top. Measure the width of the quilt top through its center. Cut two border strips that length and sew one to the top and one to the bottom. Press the seams toward the borders.

10. Repeat step 9 with the five 1-1/2" 2554-44 Plaid Checkerboard - Tan strips to make and add border 4.

11. To make border 5, use a straight seam to piece the 4-1/2" 2556-88 Border Stripe – Red strips, so the wagons are in order by month as shown on the photo. Measure the width of the quilt top through the center. Cut two border strips that length, sew a step 3 block to each end of the strips to make the top and the bottom border strips, press the seams away from squares and set them aside. Measure the vertical length of the quilt top through the center and cut two border strips that length. Sew one strip to each side of the quilt top. Press the seams toward borders. Finally, sew the top and the bottom strips to the quilt center. Press the seams toward the borders.

My Red Wagon - Quilt 1

12. Repeat step 9 with the six 1-1/2" 2554-44 Plaid Checkerboard - Tan strips to make and add border 6.

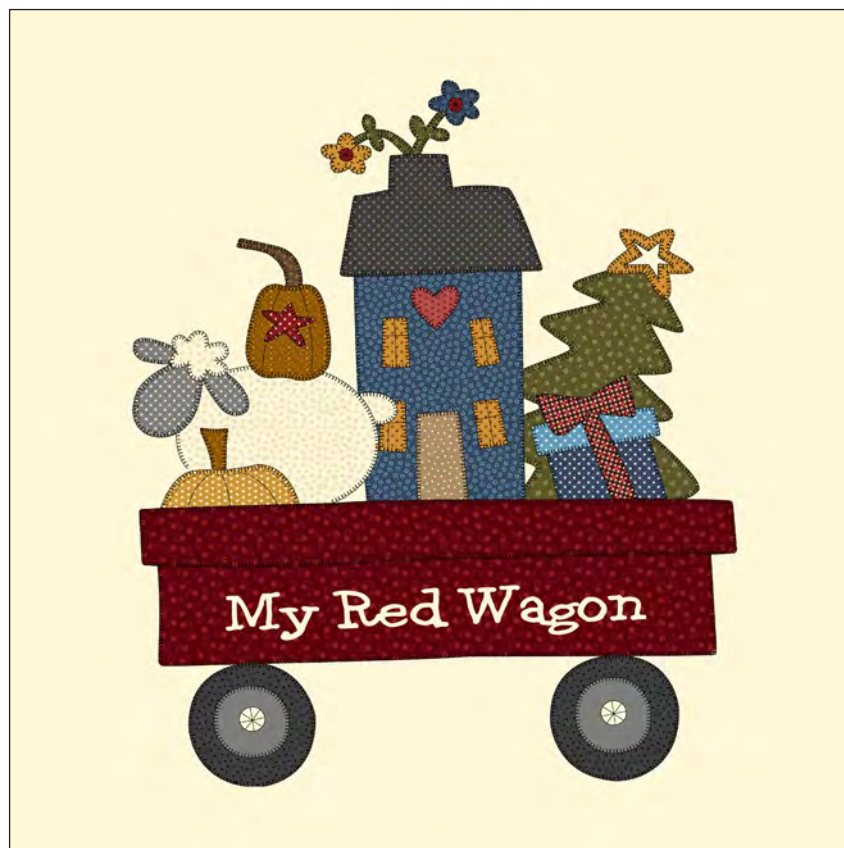
13. Repeat step 9 with the six 1-1/2" 2545-99 Small Leaves - Black strips to make and add border 7.

Finishing

14. Create a quilt sandwich with the batting between the quilt top and the backing. Pin or baste layers together, mark quilting design, and quilt by hand or machine. When quilting is complete, remove pins or

basting and trim batting and backing even with raw edges of the quilt top.

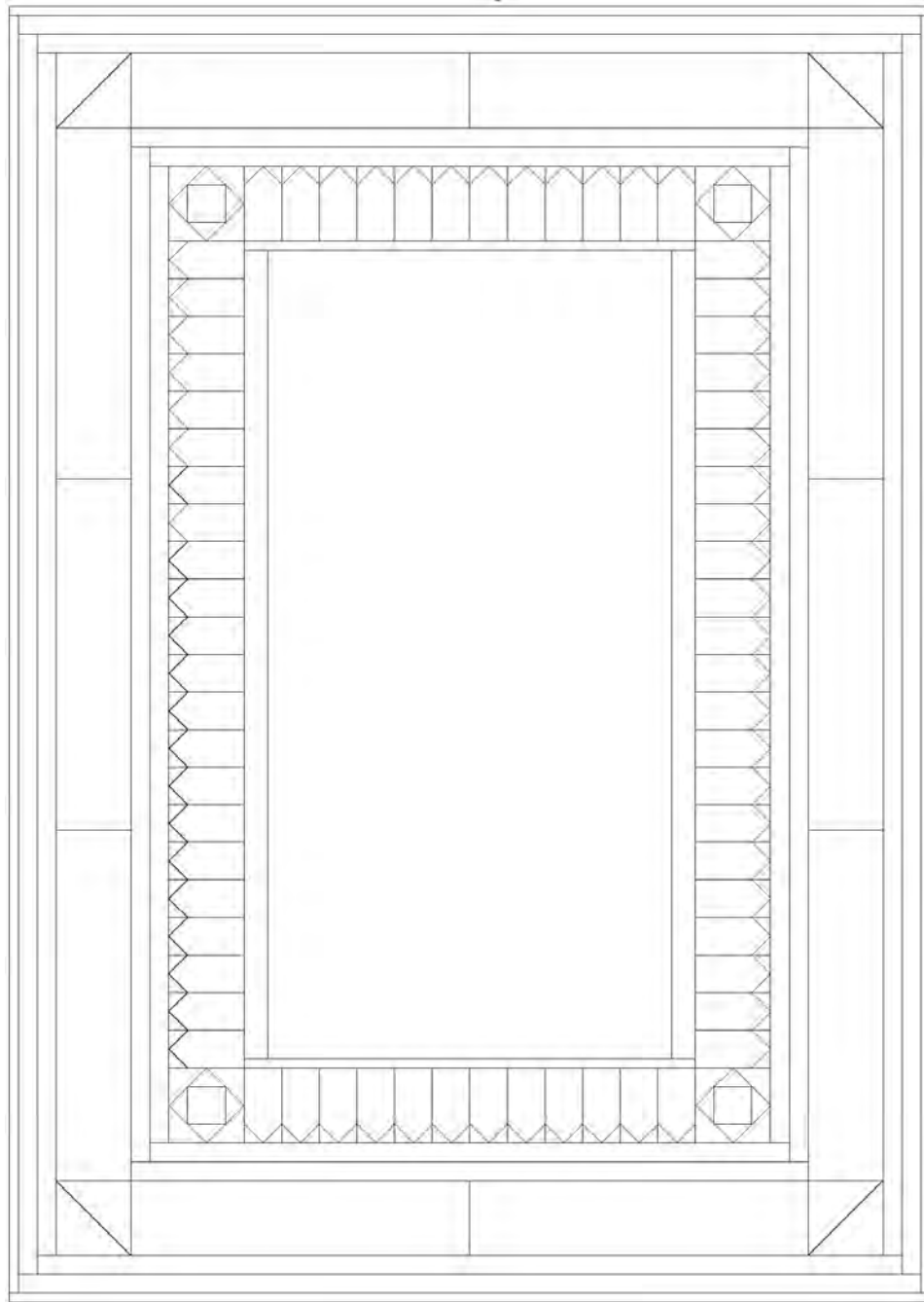
15. Join the six 2-1/2" Whimsy Basic - 8945-99 - Black binding strips together end to end using a diagonal seam to make one long strip. Fold in half lengthwise and press. Sew binding to the edges of the quilt, mitering corners, and overlapping ends. Fold binding to the back of the quilt and stitch it in place by hand to finish.



©2020 Henry Glass & Co. Inc.

Every effort has been made to ensure that all projects are error free. All the information is presented in good faith; however, no warranty can be given nor results guaranteed as we have no control over the execution of instructions. Therefore, we assume no responsibility for the use of this information or damages that may occur as a result. When errors are brought to our attention, we make every effort to correct and post a revision as soon as possible. Please make sure to check www.henryglassfabrics.com for pattern updates prior to starting the project. We also recommend that you test the project prior to cutting for kits. Finally, all free projects are intended to remain free to you and are not for resale.

My Red Wagon - Quilt 1



Quilt Diagram