

MAYWOOD  STUDIO

*Warm Wishes Quilt*



**#madewithmaywood**  
**maywoodstudio.com**

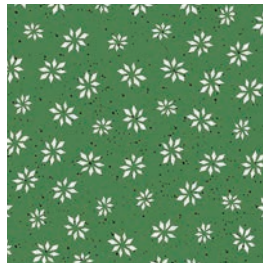




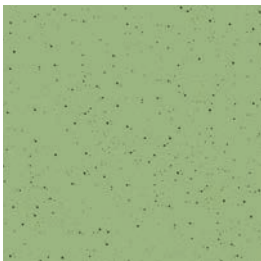
# MAYWOOD STUDIO



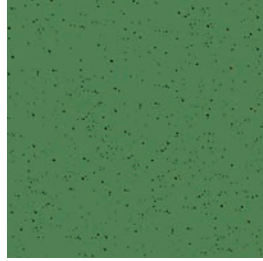
Fabric 2  
D6205-RJ



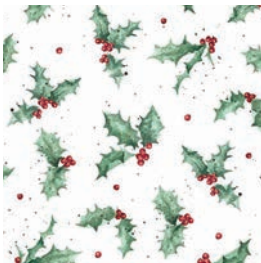
Fabric 3  
D6316-G



Fabric 4  
D6205-G2



Fabric 5  
D6205-GJ



Fabric 6  
D6313-UW



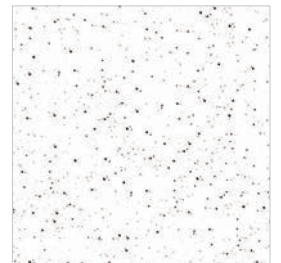
Fabric 7  
D6205-RJ2



Fabric 8  
D6314-R



Fabric 9  
D6316-R



Fabric 10  
D6205-W



Fabric 1  
D6310-UW

# MAYWOOD STUDIO

Finished Size 62" x 75"

## Fabric Requirements

Fabric 1	D6310-UW	Panel
Fabric 2	D6205-RJ	1/2 yard
Fabric 3	D6316-G	1-1/8 yards
Fabric 4	D6205-G2	1/2 yard
Fabric 5	D6205-GJ	1/2 yard
Fabric 6	D6313-UW	1/2 yard
Fabric 7	D6205-RJ2	1/4 yard
Fabric 8	D6314-R	1/3 yard
Fabric 9	D6316-R	1/4 yard
Fabric 10	D6205-W	5/8 yard
Binding	Included in Fabric 3	
Backing	your choice	4 yards

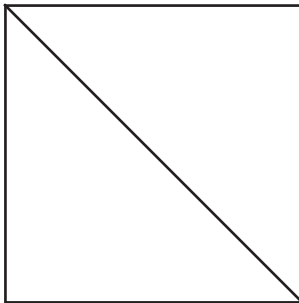


Fig. 1  
Cut once on  
the diagonal

WOF - Width of Fabric  
LOF - Length of Fabric  
RST - Right Sides Together  
HST - Half Square Triangle

## Cutting

### Fabric 1 Panel

A: Trim the panel to 30" x 40-1/2"  
B: Cut the side panel accent animals into (8) 4" squares. Center each animal in the square.

### Fabric 2

Cut (2) 4" x WOF Strips. Subcut into:  
C: (16) 4" squares  
Cut each square once on the diagonal for 32 triangles. Fig 1  
Cut (2) 4-1/2" x WOF Strips. Subcut into:  
K: (30) 2-1/2" x 4-1/2" rectangles

### Fabric 3 - Cut (3) 5-1/2" x WOF Strips

Subcut into  
D: (16) 5-1/2" squares  
Cut each square once on the diagonal for 32 triangles. Fig 1  
P: Cut (2) 4-1/2" x 8-1/2" rectangles  
Binding  
Cut (8) 2-1/2" x WOF strips

### Fabric 4 - Cut (2) 8-1/2" x WOF strips

Subcut into  
E: (8) 4-1/2" x 8-1/2" pieces  
F1: (4) 6-1/2" x 8-1/2" pieces  
(for side borders)  
F2: (2) 6" x 8-1/2" pieces  
(for top and bottom borders)

### Fabric 5

Cut (1) 8-1/2" x WOF strip. Subcut into:  
G: (4) 8-1/2" x 8-1/2" squares  
Cut (1) 4-1/2" x WOF strip. Subcut into:  
J: (4) 4-1/2" x 4-1/2" cornerstone squares

### Fabric 6 - Cut (6) 2-1/2" x WOF strips for sashing

### Fabric 7(L), 9(N)

Cut (2) 4-1/2" x WOF strips. Subcut into:  
(30) 4-1/2" x 2-1/2" rectangles

### Fabric 8(M)

Cut (4) 2-1/2" x WOF strips. Subcut into:  
(30) 2-1/2" x 4-1/2" rectangles

### Fabric 10 - Cut (7) 2-1/2" x WOF strips for sashing

## Warm Wishes Quilt

Please read all instructions before you begin. Seam allowance is 1/4" unless otherwise stated. Use a light sizing/starch on the squares before cutting triangles to help control stretching along the bias edges.

### Economy Blocks

1. Sew a Fabric 2 (C) triangle to the top and bottom of each Fabric 1 (B) animal square. Press away from center. Trim the overhang even with the edge of the center square. Fig. 2

2. Sew a Fabric 2 (C) triangle to the remaining sides of the step 1 unit. Press away from center. Fig. 3

3. Trim to a 1/4" seam allowance around the center square.

4. Center a Fabric 3 (D) triangle to the side of the Step 3 unit. Sew. Repeat on the opposite side. Press away from center. Trim the overhang even with the edge of the square. Fig. 4

5. Sew a Fabric 3 (D) triangle to the remaining sides of the step 4 unit. Fig. 5  
Press away from center. Square block to 8-1/2"

6. Repeat steps 1-5 to make a total of **8** economy blocks with the animal squares.

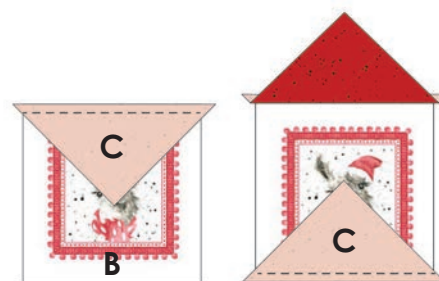


Fig. 2



Fig. 3

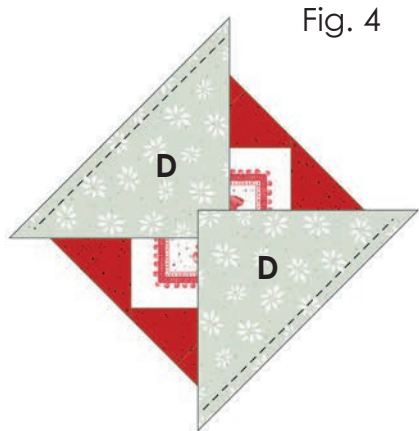


Fig. 4

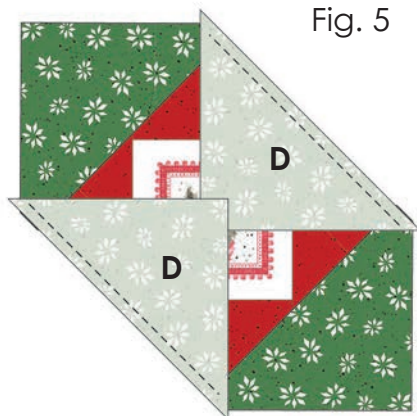


Fig. 5



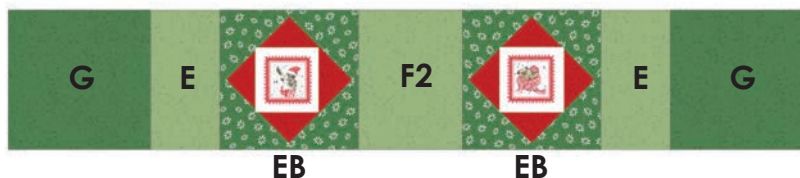
8-1/2" x 8-1/2"  
**Make 8**



7. Piece the Economy Blocks (EB) into the side borders as shown below:



8. Piece the Economy Blocks (EB) into the top and bottom borders as shown below:



The top and bottom borders measure 46" long

9. Sew the Step 7 side borders to either side of the panel center. Press away from center.

10. Sew the Step 8 top and bottom borders to either side of the panel center. Press away from center.

**Tip:** Pin the centers of the rows to the matching center of the panel. Continue to pin out toward the edges before sewing.

### Inner Sashing

10. Sew the Fabric 6 sashing strips together, end to end, into one continuous strip.

11. The width of the quilt top through the middle: \_\_\_\_\_  
Trim two 2 sashing strips to this measurement. Sew to the top and bottom of the quilt. Press away from center.

12. Measure the length of the quilt through the middle: \_\_\_\_\_  
Trim two 2 sashing strips to this measurement. Sew to the sides of the quilt. Press away from center.



### Pieced Red Borders

**13.** Sew **30** red rectangles (K, L, M, N) together in any order. Press in one direction. Repeat for a second border. **Make 2.**

**14.** Sew the side rows to the quilt top. Trim ends as needed. (See p. 7)



Pieced side borders

**15.** Sew **25** red rectangles (K, L, M, N) together in any order. Sew a Fabric 5 (J) cornerstone square to either end of the pieced border. Press in one direction. Repeat for a second border. **Make 2.**

**16.** Sew the top and bottom rows to the quilt top. (See p. 7)



The pieced top and bottom borders measure 58" long

### Outer Sashing

**10.** Sew the Fabric 10 sashing strips together, end to end, into one continuous strip.

**11.** Measure the width of the quilt top through the middle: \_\_\_\_\_  
Trim two 2 sashing strips to this measurement. Sew to the top and bottom of the quilt.  
Press away from center.

**12.** Measure the length of the quilt through the middle: \_\_\_\_\_  
Trim two 2 sashing strips to this measurement. Sew to the sides of the quilt.  
Press away from center.

### Finishing

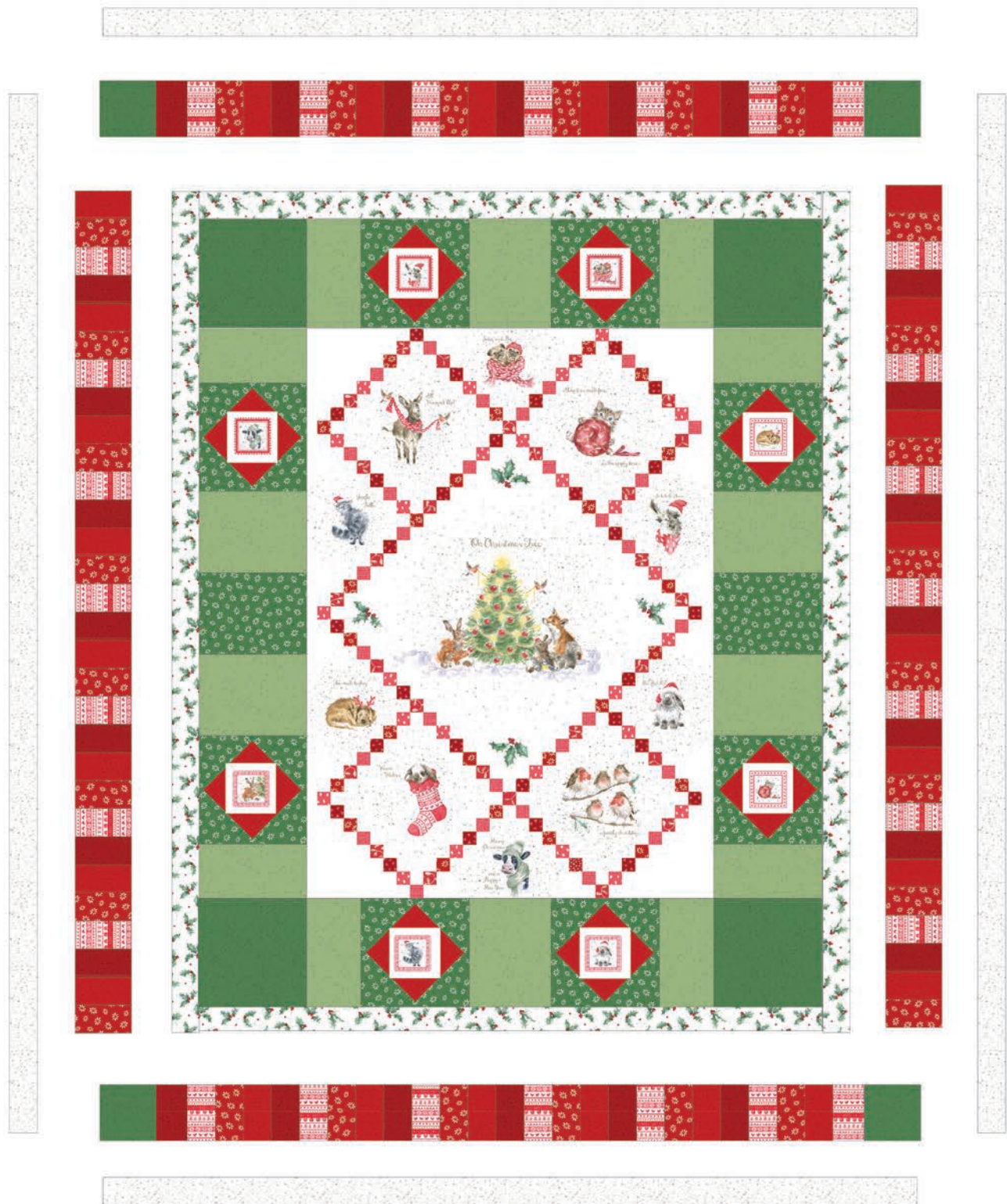
**13.** Press the quilt top.

**14.** Layer the backing (wrong side up), batting and quilt top (right side up). Baste layers to secure. Quilt as desired. Trim the excess backing and batting.

**15.** Sew the binding strips together into one continuous strip. Press in half length-wise. Sew the binding to the quilt top with a 3/8" seam allowance, mitering the corners. Turn the binding to the back side of the quilt and stitch down by hand with matching thread.



## Quilt Top Assembly Diagram



Plan your quilt top.

