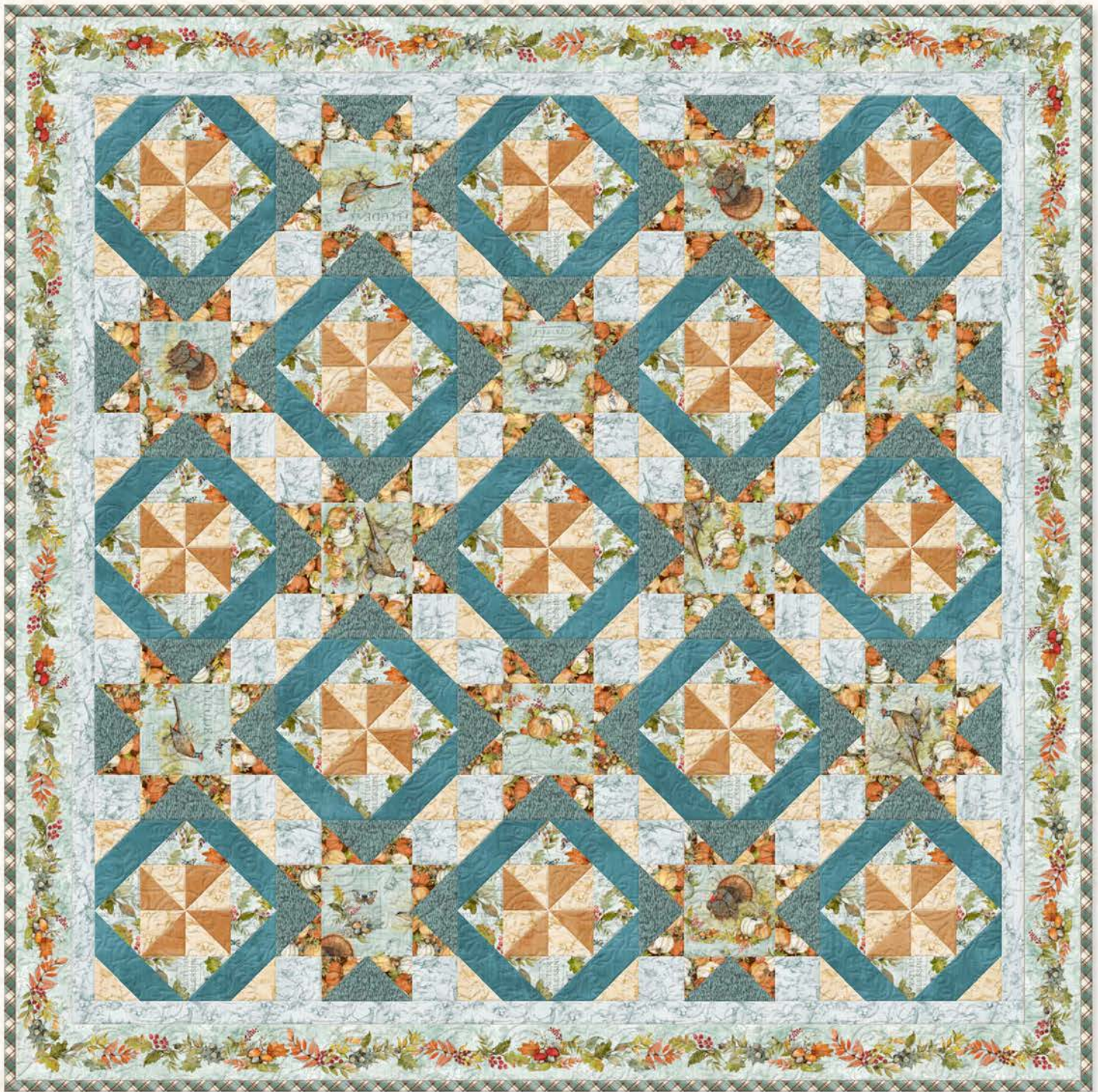


3023

Seeds of Gratitude

By Susan Winget



Blue Table Topper: 47" Square



www.wilmingtonprints.com

Wilmington Prints: A World of Possibilities

Seeds of Gratitude

Please read all instructions carefully AND identify all fabrics before beginning.

All instructions include a 1/4" seam allowance and strips are cut selvage to selvage, unless stated otherwise.

1. Cut the following:

If using FAT CUTS, you may need to cut additional width-of-fabric strips.

PLEASE NOTE:

Cut all 5-1/4" squares in half diagonally twice for the number of triangles indicated in [].

Cut all 4-7/8", 3-3/4", and 2-7/8" squares in half diagonally for the number of triangles indicated in [].

Fabric A - Cut (2) 2-7/8" strips, subcut (26) 2-7/8" squares [52]

Fabric B - Cut (2) 2-7/8" strips, subcut (26) 2-7/8" squares [52]
Cut (4) 2-1/2" strips, subcut (52) 2-1/2" squares

Fabric C - Cut (3) 3-3/4" strips, subcut (26) 3-3/4" squares [52]

Fabric D - Cut (4) 4-7/8" strips, subcut (26) 4-7/8" squares [52]

Fabric E - Cut (2) 4-1/2" strips, somewhat fussy cut (12) 4-1/2" squares

Fabric F - Cut (2) 5-1/4" strips, subcut (12) 5-1/4" squares [48]

Fabric G - Cut (4) 2-7/8" strips, subcut (48) 2-7/8" squares [96]

Fabric H - Cut (3) 2-1/2" strips, subcut cut (48) 2-1/2" squares
Cut (4) 1-1/2" strips. Sew 2 strips together end to end and cut into (1) 1-1/2" x 42-1/2" and (1) 1-1/2" x 40-1/2" borders. Repeat for a total of 2 each length border.

Fabric I - Cut (6) 2-1/2" strips (binding)

Fabric J - Referring to the quilt image, fussy cut strips, the length of fabric parallel to selvage: (4) 3" x 50" wide stripe borders

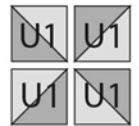
2. Piecing Order:

1. Stitch 1 each **Fabrics A** and **B** 2-7/8" triangles together along their long edges. Make a total of 52 Unit 1 (2-1/2" square unfinished).



Unit 1
Make 52

2. Arrange 4 Unit 1 in 2 rows. Stitch into rows. Sew rows together. Make a total of 13 Unit 2 (4-1/2" square unfinished).



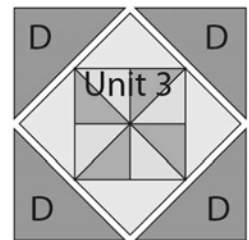
Unit 2 - Make 13

3. Sew 4 **Fabric C** 3-3/4" triangles to all sides of a Unit 2. Make a total of 13 Unit 3 (6-1/8" square unfinished).



Unit 3 - Make 13

4. Sew 4 **Fabric D** 4-7/8" triangles to all sides of a Unit 3. Make a total of 13 Unit 4 (8-1/2" square unfinished).



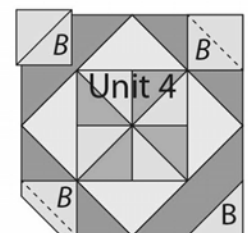
Unit 4 - Make 13

5. Draw a diagonal line across the wrong side of all **Fabric B** 2-1/2" squares.



Letters in italics indicate wrong side of fabric.

6. Arrange 4 **Fabric B** 2-1/2" squares on corners of a Unit 4. Stitch along marked lines. Trim seam allowances to 1/4". Press triangles out. Make a total of 13 **Block 1** (8-1/2" square unfinished).



Block 1 - Make 13

7. Sew 2 **Fabric G** 2-7/8" triangles to short edges of a **Fabric F** 5-1/4" triangle. Make a total of 48 Unit 5 (2-1/2" x 4-1/2" unfinished).

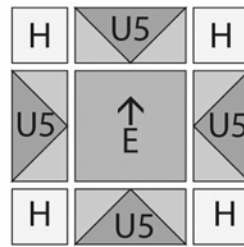


Unit 5 - Make 48

Stripes indicate orientation of directional prints.

Seeds of Gratitude

8. Arrange 1 **Fabric E** 4-1/2" square, 4 **Fabric H** 2-1/2" squares, and 4 unit 5 in 3 rows. Stitch into rows. Sew rows together. Make a total of 12 **Block 2** (8-1/2" square unfinished).



Block 2 - Make 12

Arrows and stripes indicate orientation of directional prints.

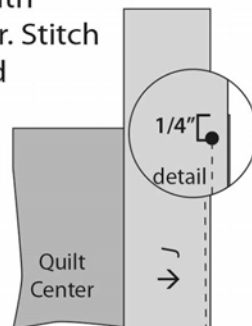
9. Refer to Quilt Layout for arrangement and placement of blocks and borders.

10. Arrange blocks in 5 rows. Stitch into rows. Sew rows together completing quilt center (40-1/2" square unfinished).

11. Sew **Fabric H** 1-1/2" x 40-1/2" borders to right and left sides of quilt center. Add **Fabric H** 1-1/2" x 42-1/2" borders to top and bottom of quilt center.

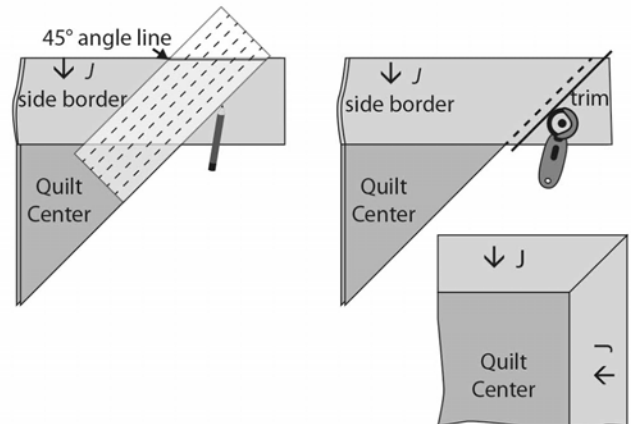
12. Center **Fabric J** 3" x 50" borders on all sides of quilt center with top edge next to quilt center. Stitch borders to sides starting and stopping 1/4" from corners of quilt center.

Do not trim. Press borders out.



*Letters in italics indicate wrong side of fabric.
Arrows indicate orientation of directional prints.*

13. Working with 1 corner at a time, fold the quilt right sides together so the outside edges of the borders line up. Using a 45-degree ruler, mark from the end of border seams to outer edges of borders. Stitch along marked line. Trim seam allowance to 1/4". Press corner seam open. Repeat on remaining corners.



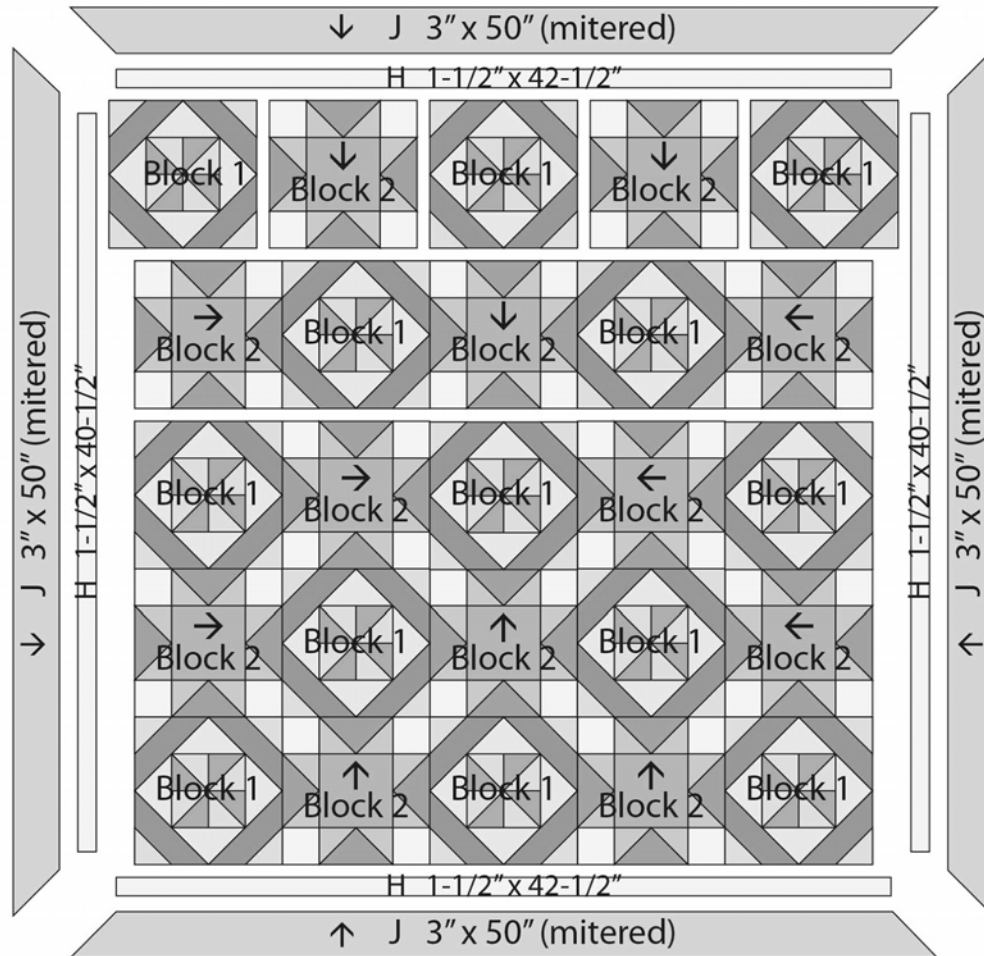
14. The quilt measures approximately 47-1/2" square (unfinished). Make backing (**Fabric K**) approximately 8" larger than the top.

15. Layer and baste top, batting, and backing together. Quilt as desired. Attach binding (**Fabric I**) and enjoy!!


Seeds of Gratitude

QUILT LAYOUT

Border measurements are the cut size.
Arrows indicate orientation of directional prints.



Seeds of Gratitude By Susan Winget



Essentials


Fabric A
1077-89205-252
1/4 yd.
(or Fat Quarter)



Fabric B
3023-39658-221
5/8 yd.



Fabric C
3023-39656-487
1/2 yd.



Essentials

Fabric D
1077-89205-407
2/3 yd.



Fabric E
3023-39655-478
3/8 yd.
(or Fat Quarter)



Fabric F
3023-39660-749
1/2 yd.



Fabric G
3023-39657-258
1/2 yd.



Fabric H
3023-39658-441
1/2 yd.



Fabric I
3023-39659-412
5/8 yd.
(Binding only)



Fabric J
3023-39654-248
1 5/8 yds.



Fabric K
3023-39656-287
3 1/4 yds.
(Backing only)

