

3017

Hot COCOA Bar

by Danielle Leone



Wall Banner: 29 1/2" x 25 3/4"



www.wilmingtonprints.com

Wilmington Prints: A World of Possibilities

Hot COCOA Bar


Please read all instructions carefully AND identify all fabrics before beginning.

All instructions include a 1/4" seam allowance and strips are cut selvage to selvage, unless stated otherwise.

1. Cut the following:

If using FAT CUTS, you may need to cut additional width-of-fabric strips.


PLEASE NOTE:


Cut all 4-1/8", 3-1/4", and 2-5/8" squares in half diagonally twice for the number of triangles indicated in []. 



Fabric A - PLEASE NOTE: Panels do not always print the size intended. For this pattern, panels have a coping border added then trimmed so they will fit the quilt correctly.

Fussy cut 1/4" beyond outside edges of 4 long panels to approximately 7-1/2" x 15-1/2"


Fabric B - Referring to the quilt image, fussy cut strip, the length of fabric parallel to selvage: (1) 5-1/2" x 30" counter top stripe border

Fabric C - Cut (1) 3-1/4" strip, subcut (2) 3-1/4" squares  [8]. Trim remaining strip to 2-1/2" x 35", subcut (2) 2-1/2" x 17" strips

Fabric D - Cut (1) 3-1/4" strip, subcut (3) 3-1/4" squares  [12].
Cut (4) 2-1/2" strips (binding)

Fabric E - Cut (1) 4-1/8" strip, subcut (1) 4-1/8" square  [4], (3) 2-5/8" squares  [12], and (6) 1-1/2" squares

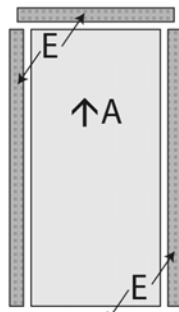
Cut (4) 1-3/4" strips, subcut (6) 1-3/4" x 16" and (6) 1-3/4" x 10" pieces

Fabric F - Cut (1) 3-1/4" strip, subcut (2) 3-1/4" squares  [4] and (12) 1-1/2" squares

NOTE: Not all Fabrics C and F 3-1/4" and Fabric E 4-1/8" triangles are used.

2. Piecing Order:

1. Stitch **Fabric E** 1-3/4" x 16" strips to sides of a **Fabric A** panel. Trim strip ends even. Add 1-3/4" x 10" **Fabric E** strips to top and bottom of panel. **Trim bordered panel to 9" x 17" (unfinished).**



Block 1 - Make 4

Arrows indicate orientation of directional prints and placement of strips.

2. Arrange 2 **Fabric D** and 1 each **Fabrics C** and **F** 3-1/4" triangles as shown. Stitch triangles together. Make a total of 6 Unit 1 (2-1/2" square unfinished).



Unit 1
Make 6

3. Arrange 2 each **Fabrics E** and **F** 1-1/2" squares in 2 rows, alternating fabrics. Stitch squares into rows. Sew rows together. Make a total of 3 Unit 2 (2-1/2" square unfinished).



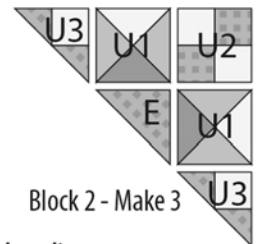
Unit 2
Make 3

4. Sew 2 **Fabric E** 2-5/8" triangles to adjoining sides of a **Fabric F** 1-1/2" square. Make a total of 6 Unit 3 (2-7/8" x 2-7/8" x 4-1/8" unfinished).



Unit 3
Make 6

5. Arrange 1 **Fabric E** 4-1/8" triangle, 2 Unit 1, 1 Unit 2, and 2 Unit 3 in 3 rows. Stitch into rows. Sew rows together. Make a total of 3 **Block 2** (6-7/8" x 6-7/8" x 9-3/4" unfinished).



Block 2 - Make 3

6. Refer to Quilt Layout for arrangement and placement of blocks, strips, and border.

7. Sew a **Block 2** to bottom of each **Block 1**. Sew **Fabric C** 2-1/2" x 17" strips between sets of blocks, aligning top edges. Stitch **Fabric B** 5-1/2" x 30" border to top of blocks.

8. The quilt measures approximately 26-1/4" x 30" (unfinished). Make backing (**Fabric G**) approximately 6" to 8" larger than the top.

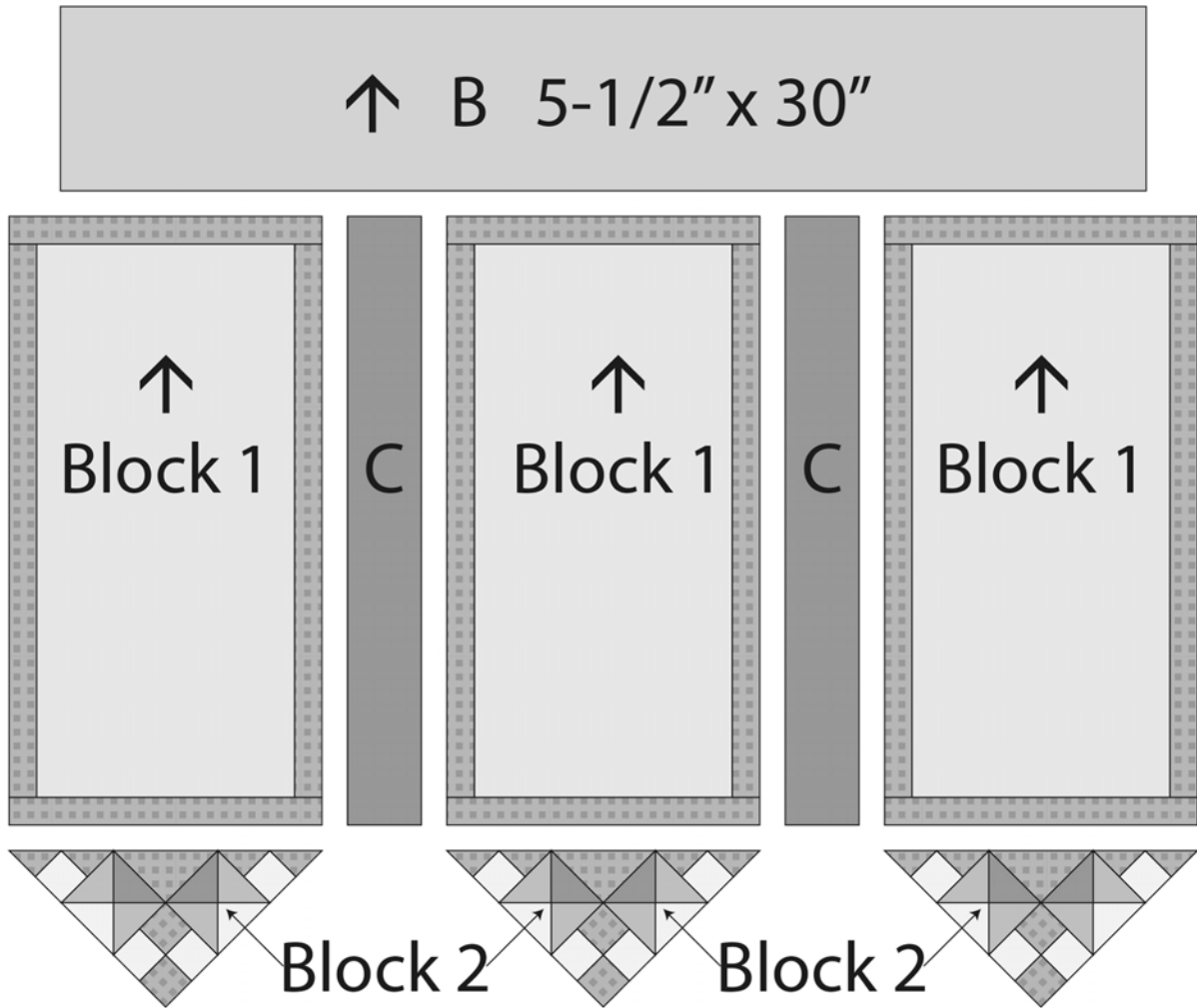
9. Layer and baste top, batting, and backing together. Quilt as desired. Attach binding (**Fabric D**) and enjoy!!

Hot COCOA Bar

QUILT LAYOUT

Border measurement is the cut size.

Arrows indicate orientation of directional prints.



3017

Hot COCOA Bar

by Danielle Leone



A 3017-27595-971
2/3 yard (1 Panel)



B 3017-27596-197
1 yard



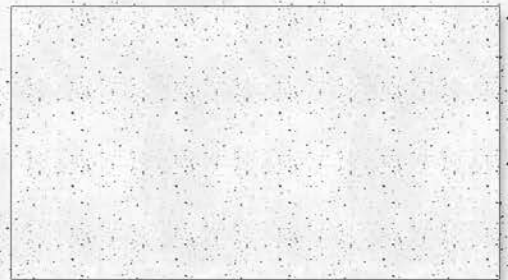
C 3017-27599-997
1/4 yard
Or Fat Quarter



D 3017-27600-923
1/2 yard
Incl. Binding



E 3017-27602-399
1/2 yard



F 3017-27603-199
1/4 yard
Or Fat Eighth



G 3017-27597-923
1 yard
Backing Only

Yardage for Fabric A & B in Table Topper is enough for both projects.

