

MAYWOOD  STUDIO

SHELTERING TREE TOPPER AND RUNNER



Sheltering Tree Projects by Robin Kingsley

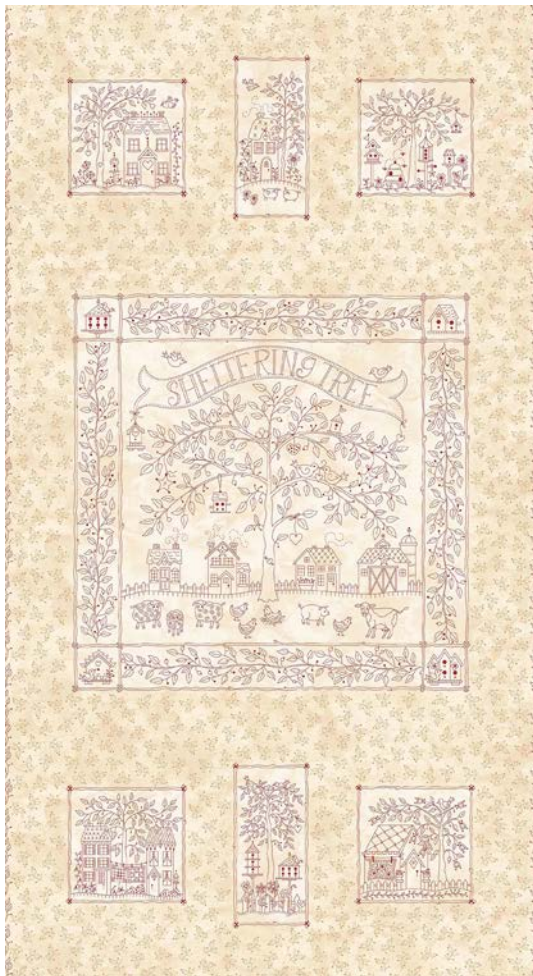
featuring the Sheltering Tree collection by Robin Kingsley from Maywood Studio

Runner 12-1/2" x 42-1/2"
Topper 35-1/2" x 35-1/2"

#madewithmaywood
maywoodstudio.com



MAYWOOD STUDIO



Panel
9770-TR



Red Fabric 1
9777-R



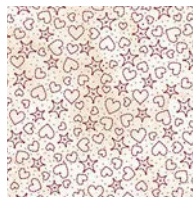
Red Fabric 2
8417-RE



Red Fabric 3
9778-RE



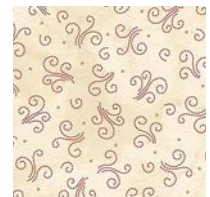
Red Fabric 4
9102-RE



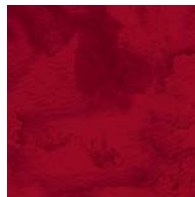
White Fabric 1
9776-ER



White Fabric 2
8417-ER



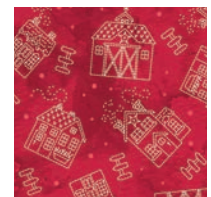
White Fabric 3
9778-TR



Inner Border/
Sashing/Binding
101-R1



Outer Border
9775-TR



Cornerstones
9772-RE

Maywood Studio makes every effort to make sure our patterns are accurate.
Please visit maywoodstudio.com and check for project updates.

Fabric Requirements

Panel	9770-TR	1 Panel
Red Fabric 1	9777-R	1/4 yard
Red Fabric 2	8417-RE	1/8 yard
Red Fabric 3	9778-RE	1/4 yard
Red Fabric 4	9102-RE	1/8 yard
White Fabric 1	9776-ER	1/8 yard
White Fabric 2	8417-ER	1/4 yard
White Fabric 3	9778-TR	1/4 yard
Inner Border/ Sashing/Binding	101-R1	1 yard
Outer Borders	9775-TR	1/2 yard
Cornerstones	9772-RE	fat quarter
Backing	your choice	2 yards

WOF - Width of Fabric
LOF - Length of Fabric
RST - Right Sides Together
HST - Half Square Triangle

See more Robin Kingsley
fun nifty stitchin' stuff at
birdbraindesigns.net

Runner Cutting

Panel	Fussy Cut (2) 7-1/2" squares - House Blocks
Red Fabric 1	Cut (3) 1-1/2" squares - Label A
Red Fabric 2	Cut (6) 1-1/2" x 3-1/2" rectangles - Label C
Red Fabric 3	Cut (6) 1-1/2" x 5-1/2" rectangles - Label E
Red Fabric 4	Cut (6) 1-1/2" x 7-1/2" rectangles - Label G
White Fabric 1	Cut (6) 1-1/2" squares - Label B
White Fabric 2	Cut (6) 1-1/2" x 3-1/2" rectangles - Label D
White Fabric 3	Cut (6) 1-1/2" x 5-1/2" rectangles - Label F
Inner Border/Sashing	Cut (6) 1" x 7-1/2" strips Cut (2) 1" x 38-1/2" strips
Outer Border	*Note direction of stripes Cut (2) 2-1/2" x 8-1/2" strips Cut (2) 2-1/2" x 38-1/2" strips
Cornerstones	Fussy Cut (4) 2-1/2" squares
Binding	Cut (3) 2-1/2" x WOF strips

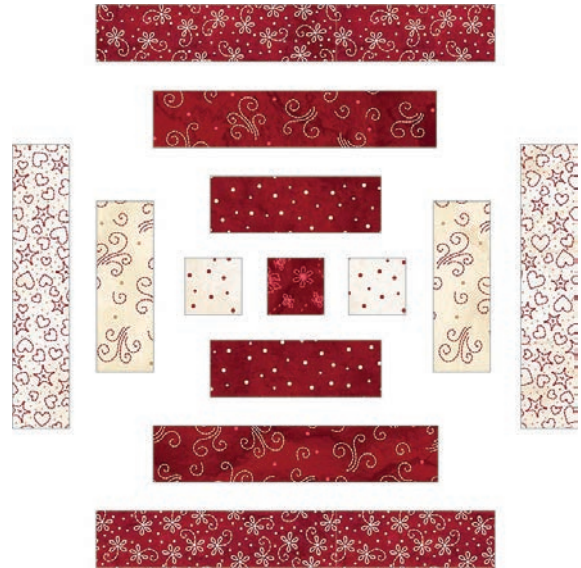
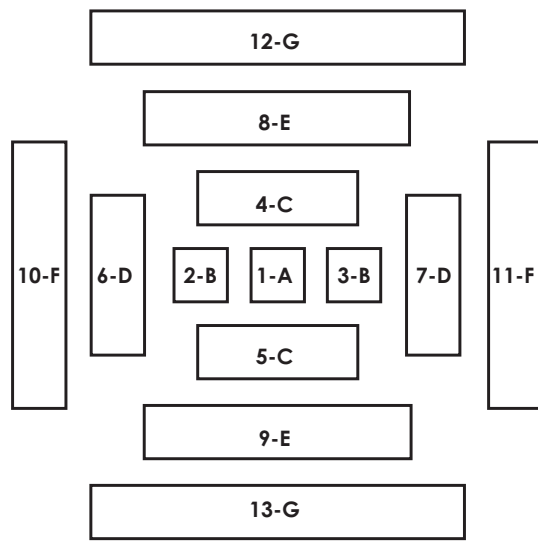
Topper Cutting

Panel	Fussy Cut (1) 20-1/2" square - Center Block
Red Fabric 1	Cut (2) 2-1/2" x 25-1/2" rectangles - Label D
Red Fabric 3	Cut (2) 2-1/2" x 30-1/2" rectangles - Label H
White Fabric 2	Cut (2) 2-1/2" x 21-1/2" rectangles - Label C
White Fabric 3	Cut (2) 2-1/2" x 26-1/2" rectangles - Label G
Inner Border/Sashing	Cut (2) 1" x 20-1/2" strip - Label A Cut (2) 1" x 21-1/2" strip - Label B Cut (2) 1" x 25-1/2" strip - Label E Cut (2) 1" x 26-1/2" strip - Label F Cut (2) 1" x 30-1/2" strip - Label I Cut (2) 1" x 31-1/2" strip - Label J
Outer Border	*Note direction of stripes Cut (4) 2-1/2" x 31-1/2" strips
Cornerstones	Fussy Cut (4) 2-1/2" squares
Binding	Cut (4) 2-1/2" x WOF strips

Sheltering Tree Panel Projects – by Robin Kingsley of Bird Brain Designs

Sheltering Tree Table Runner

1. Blocks: Starting with 1-A in the center, sew (using a 1/4" seam allowance) to 2-B creating a unit. Press.
2. Sew the 1-A/2-B unit to a 3-B unit (as shown in the illustration for placement.)
3. Continue to add the pieces to the unit in numerical order using the illustration as a guide. The block will measure 7-1/2" - seam allowance included. Make 3.



4. Layout the blocks as shown in the below illustration.



5. Sew the sashing strips to the blocks and the panel house squares to create a row. Sew the long border strips to opposite sides of the row, then sew the short border strips to opposite ends of the row.
6. Sew the stripe outer borders to opposite sides of the runner. Sew the cornerstones to the remaining two 8-1/2" stripe borders. Sew the stripe borders with the cornerstones to opposite ends of the runner. Press.
7. Layer the backing (wrong side up), batting and topper (right side up). Baste layers together.
8. Sew the binding, end to end, into one continuous strip. Fold in half lengthwise and press. Sew to the quilt using your favorite binding method.

Sheltering Tree Table Topper

1. Layout the quilt as shown in the illustration, matching fabrics as labeled.
2. Sew an A strip to the top and bottom of the center panel. Press.
3. Sew a B strip to the sides of the step 2 unit. Press.
4. Sew the C rectangles to the sides of the step 3 unit. Press.
5. Continue in this manner following the illustration until you complete the J strips.
6. Sew the striped border pieces to the sides of the topper. Press.
7. Sew a corner stone to each end of the remaining 2 striped border pieces.
8. Sew the borders with the cornerstones to the top and bottom of the topper, matching the intersections. Press.
9. Layer the backing (wrong side up), batting and topper (right side up). Baste layers together.
10. Quilt as desired.
11. Sew the binding, end to end, into one continuous strip. Fold in half lengthwise and press. Sew to the quilt using your favorite binding method.

