

MAYWOOD  STUDIO

Ruby Quilt



Ruby Quilt by Bonnie Sullivan

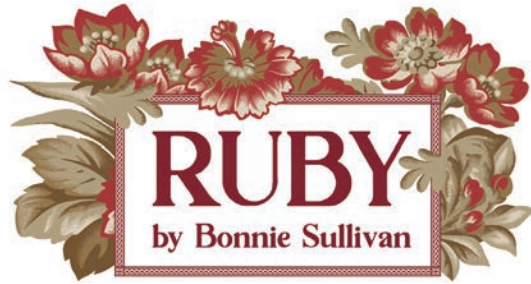
featuring the Ruby Collection by Bonnie Sullivan from Maywood Studio

75 x 75

#madewithmaywood
maywoodstudio.com



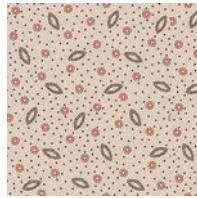
MAYWOOD STUDIO



Fabric 1
9700-T



Fabric 2
9706-E



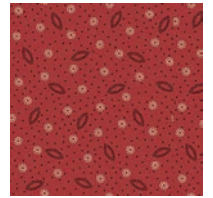
Fabric 3
9707-TR



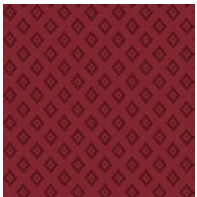
Fabric 4
9705-T



Fabric 5
9709-TR



Fabric 6
9707-RA



Fabric 7
9709-R



Fabric 8
9708-R



Fabric 9
9706-R



Fabric 10
9709-T



Fabric 11
9705-T2



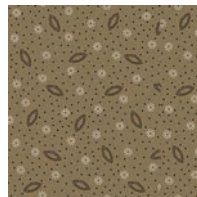
Fabric 12
9703-E



Fabric 13
9708-E



Fabric 14
9704-T



Fabric 15
9707-T

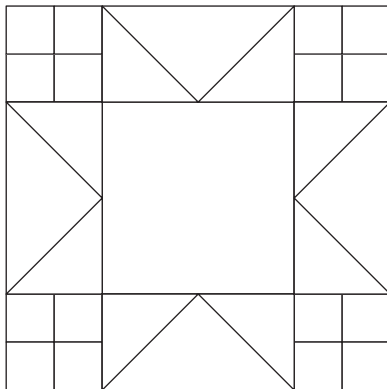


Fabric 16
9701-T

MAYWOOD STUDIO

Fabric Requirements

Fabric 1	9700-T	3/4 yard
Fabric 2	9706-E	1/2 yard
Fabric 3	9707-TR	1/2 yard
Fabric 4	9705-T	1/2 yard
Fabric 5	9709-TR	1/2 yard
Fabric 6	9707-RA	3/8 yard
Fabric 7	9709-R	3/8 yard
Fabric 8	9708-R	3/8 yard
Fabric 9	9706-R	3/8 yard
Fabric 10	9709-T	fat quarter
Fabric 11	9705-T2	fat quarter
Fabric 12	9703-E	fat quarter
Fabric 13	9708-E	fat quarter
Fabric 14	9704-T	1 yard
Fabric 15	9707-T	3/4 yard
Fabric 16	9701-T	2-1/4 yards
Backing	your choice	4-3/4 yards



Star Block
16-1/2" x 16-1/2"
9 Total

Cutting

Finished Size 75" x 75"

Cut all pieces in the order listed.

Fabric 1 Cut (9) 8-1/2" Squares

Fabrics 2, 3, 4, 5

From each fabric cut (3) 4-1/2" x WOF strips.
Subcut into (9) 4-1/2" x 8-1/2" rectangles

Fabrics 6, 7, 8, 9

From each fabric cut (2) 4-1/2" x WOF strips.
Subcut into (18) 4-1/2" x 4-1/2" squares

Fabrics 10, 11, 12, 13

From each fat quarter cut (5) 2-1/2" x 21" strips.

Fabric 14

Cut (12) 2-1/2" x WOF strips.
Subcut into (24) 2-1/2" x 16-1/2" sashing strips

Fabric 15

Cut (9) 2-1/2" x WOF strips.
From (1) strip subcut
(16) 2-1/2" x 2-1/2" corner squares
Binding use (8) 2-1/2" x WOF strips

Fabric 15 Border Stripe

Cut (4) 10-1/2" x LOF strips. Each strip should feature a green and red section with the cream stripe in between.

WOF - Width of Fabric
LOF - Length of Fabric
RST - Right Sides Together
HST - Half Square Triangle

Ruby Quilt – by Bonnie Sullivan

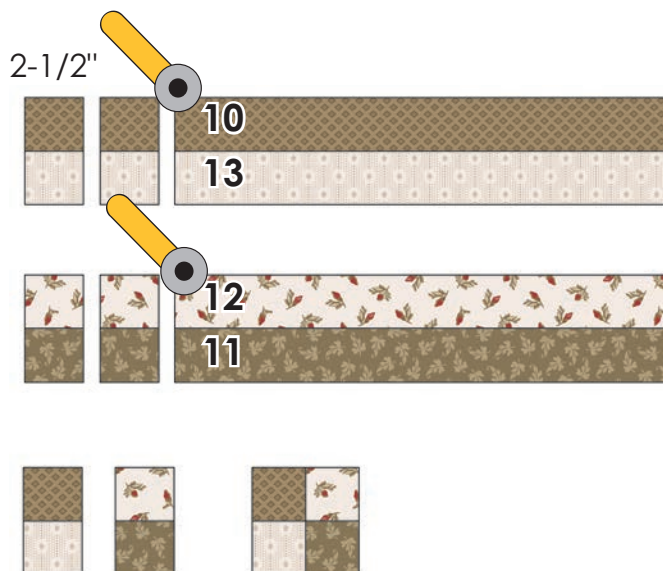
Please read all instructions before you begin. Seam allowance is 1/4" unless otherwise stated. Use a light sizing/starch on the squares before cutting triangles to help control stretching along the bias edges.

Four Patch Units

1. Sew the **Fabric 10** and **Fabric 13** strips together for a total of (5) strip sets. Subcut into (36) 2-1/2" sections.

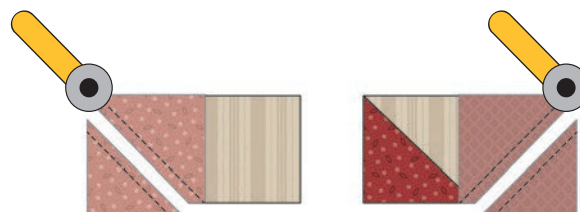
2. Sew the **Fabric 12** and **Fabric 11** strips together for a total of (5) strip sets. Subcut into (36) 2-1/2" sections.

3. Sew the units from Step 1 and 2 together to make (36) four patch units.

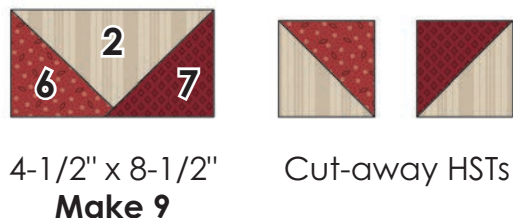


Flying Geese Units

4. Draw a diagonal line from corner to corner on the wrong side of a **Fabric 6** square. Draw a second line 1/2" away. Place the **Fabric 6** square on a **Fabric 2** rectangle, right sides together, with the second line toward the outside corner. Sew on both drawn lines. Cut apart between the sewn lines and press.



5. Draw a diagonal line from corner to corner on the wrong side of a **Fabric 7** square. Draw a second line 1/2" away. Place the **Fabric 7** square on the opposite side of the Step 4 unit, right sides together, with the second line toward the outside corner. Sew on both drawn lines. Cut apart between the sewn lines and press.



Reserve the cut-away half-square triangles for the bonus project on p.7.

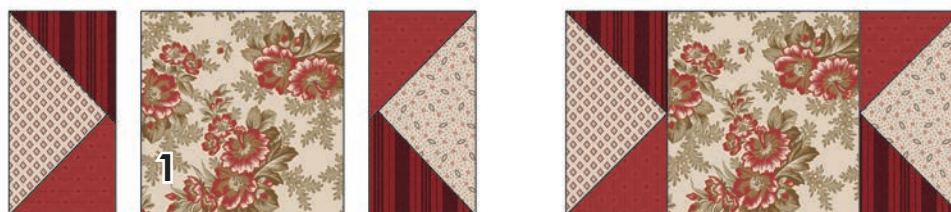
6. Repeat steps 4-5 to make (9) of each of the following flying geese units:

Fabric 4 rectangle: Fabric 6 and 7 squares
Fabric 3 rectangle: Fabric 8 and 9 squares
Fabric 5 rectangle: Fabric 8 and 9 squares

Reserve the cut-away half-square triangles for the bonus project on p.7.



7. Sew a flying geese unit to either side of a Fabric 1 square. Press. Repeat to make a total of 9 center block sections.



8. Sew a four patch unit to either side of a flying geese unit. Press. Repeat to make a total of 9 top block sections.



9. Sew a four patch unit to either side of a flying geese unit. Press. Repeat to make a total of 9 bottom block sections.



10. Sew the Step 8 top and the Step 9 bottom sections to the step 7 center block sections. Press. Make 9.

11. Sew (4) Fabric 14 vertical sashing strips to (3) star blocks to create a row. Repeat to make 3 rows total. Press toward the sashing. *Refer to picture on p.6.

12. Sew (4) Fabric 15 corner squares to (3) Fabric 14 sashing strips. Repeat to make (4) horizontal sashing rows total. Press toward sashing.



16-1/2" x 16-1/2"
Make 9



Make 4

13. Center a border strip on the left side of the quilt top and pin in place. Start sewing the strip 1/4" from the top and stop 1/4" from the bottom. Backstitch a few stitches to secure. Do not trim excess. Repeat for the right side.

14. Sew a border strip to the top and bottom of the quilt top, starting and stopping 1/4" away from each end, securing with a few stitches.

15. Fold the quilt top on a diagonal, right sides together. This will line up with the border strip from the adjacent sides. Starting at the sewn seam, draw a 45° line to the edge of the fabric. Sew on that line. Trim the excess fabric leaving a 1/4" seam. Repeat on remaining corners.



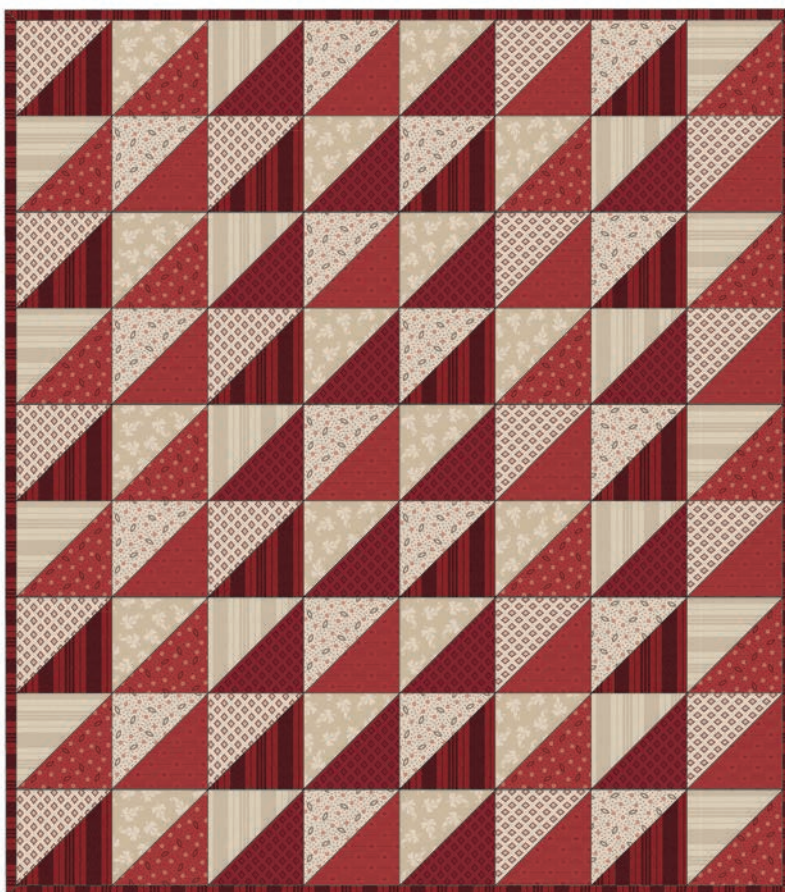
16. Layer the backing (wrong side up), batting and quilt top (right side up). Baste layers to secure. Quilt as desired. Trim the excess backing and batting.

17. Sew the binding strips together into one continuous strip. Press in half length-wise. Sew the binding to the quilt top with a 3/8" seam allowance. Turn the binding to the back side of the quilt and stitch down by hand with matching thread.

Ruby Quilt Pattern Bonus Project

1. Trim the cut-away half square triangle units to 3-1/2" x 3-1/2" square.
2. Randomly arrange the blocks into 9 rows of 8 blocks and sew together.
3. Quilt as desired and bind to finish.

This could be a little doll quilt or you could also use these blocks to make a pillow or for a patchwork strip for the center of your quilt backing. So many fun options!



For more Ruby projects and inspiration visit
maywoodstudio.com and allthroughthenightquilts.com

Ruby Quilt Planning Diagram

