

# Dragonfly Garden

by Color Principle

Quilt 1

Designed by Denise Russell



Quilt size: 44" x 62"

Skill Level: Intermediate

 **Henry Glass & Co., Inc.**

49 West 37th Street  
New York, NY 10018  
Tel: 212-686-5194 - Fax: 212-532-3525  
Toll Free: 800-294-9495 - [www.henryglassfabrics.com](http://www.henryglassfabrics.com)

facebook

Free Project  
NOT FOR RESALE





# Dragonfly Garden

## Fabrics in the Collection



2459P-11 Garden Banner  
Panel - Sky Blue



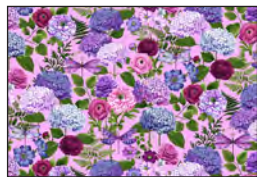
2460-77 Dragonfly Blocks - Royal



2461-11 Border Stripe - Sky Blue



2462-11 Hydrangea  
Bouquets - Sky Blue



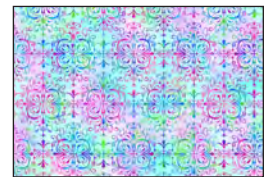
2462-22 Hydrangea  
Bouquets - Peony Pink



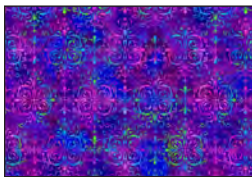
2463-17 Dragonfly Toss  
Pastel



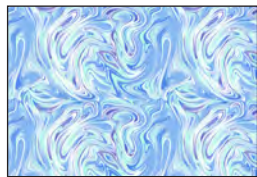
2464-77 Ranunculus  
Floral - Royal



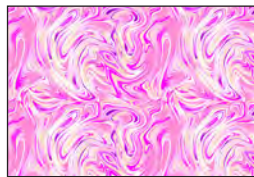
2465-17 Garden  
Medallion - Pastel



2465-77 Garden  
Medallion - Royal



2466-11 Lagoon Marble  
Sky Blue



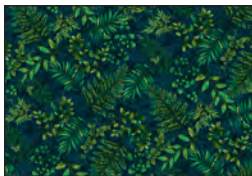
2466-22 Lagoon Marble  
Peony Pink



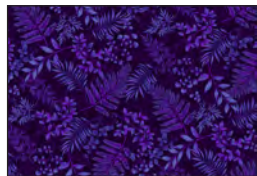
2467-11 Dragonfly  
Lagoon - Sky Blue



2468-17 Fern  
Pastel



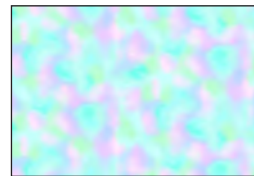
2468-66 Fern  
Forest



2468-77 Fern  
Royal



2468-88 Fern  
Burgundy



2469-17 Candy Cloud  
Pastel

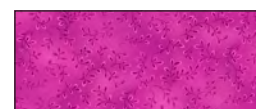
### Selected fabrics from the Folio Basic Collection



7755-07 Powder Blue



7755-25 Lt. Pink



7755-52 Peony Pink



7755-61 Jade



7755-71 Cerulean Blue



7755-75 Med. Blue

# Dragonfly Garden - Quilt 1

Page 1

## Materials

*Yardages and cutting instructions are based on 42" of usable fabric width.*

1 2459P-11 Garden Banner Panel-Sky Blue  
1/4 yard 7755-25 Folio Basic-Lt. Pink  
1/4 yard 7755-52 Folio Basic-Peony Pink  
1/4 yard 7755-61 Folio Basic-Jade  
1/4 yard 7755-71 Folio Basic-Cerulean Blue  
1/4 yard 2468-66 Fern-Forest  
1/4 yard 2466-22 Lagoon Marble-Peony Pink  
1/4 yard 2462-11 Hydrangea Bouquets-Sky Blue  
1/4 yard 2468-88 Fern-Burgundy  
1/4 yard 2465-77 Garden Medallion-Royal  
1/3 yard 7755-07 Folio Basic-Powder Blue  
1/3 yard 7755-75 Folio Basic-Med. Blue  
1/3 yard 2462-22 Hydrangea Bouquets-Peony Pink  
1/3 yard 2467-11 Dragonfly Lagoon-Sky Blue  
3/8 yard 2464-77 Ranunculus Floral-Royal  
5/8 yard 2466-11 Lagoon Marble-Sky Blue  
2/3 yard 2465-17 Garden Medallion-Pastel  
1-1/8 yards 2468-77 Fern-Royal  
2-1/4 yards 2461-11 Border Stripe-Sky Blue  
3 yards 2463-17 Dragonfly Toss-Pastel for backing  
52" x 70" piece of batting  
Plastic for template

## Cut Fabrics

*Note: All strips are cut across the width of the fabric (WOF) from selvage to selvage unless otherwise noted. If cut across the length of the fabric (LOF), the LOF notation will be indicated.*

### From 2459P-11 Garden Banner Panel-Sky Blue:

\*Trim panel to 20-1/2" x 38-1/2".

### From each:

7755-25 Folio Basic-Lt. Pink  
7755-52 Folio Basic-Peony Pink  
7755-61 Folio Basic-Jade  
2468-66 Fern-Forest  
2466-22 Lagoon Marble-Peony Pink  
\*Cut two 2" x WOF strips. (A)

### From each:

7755-71 Folio Basic-Cerulean Blue  
2462-11 Hydrangea Bouquets-Sky Blue

\*Cut one 3-7/8" x WOF strip. Sub-cut two 3-7/8" squares.

### From 2468-88 Fern-Burgundy:

\*Cut one 2-3/8" x WOF strip. Sub-cut:  
- Two 2-3/8" squares; and  
- Four 2" x 3-1/2" strips.

### From 2465-77 Garden Medallion-Royal:

\*Cut one 2-3/8" x WOF strip. Sub-cut:  
- Two 2-3/8" squares; and  
- Four 2" x 5" strips.

### From each:

7755-07 Folio Basic-Powder Blue  
7755-75 Folio Basic-Med. Blue  
2467-11 Dragonfly Lagoon-Sky Blue  
\*Cut three 2" x WOF strips. (B)

### From 2462-22 Hydrangea Bouquets-Peony Pink

\*Cut two 2" x WOF strips. (A)  
\*Cut one 2-3/8" x WOF strip. Sub-cut:  
- Two 2-3/8" squares; and  
- Four 2" x 3-1/2" strips.

### From 2464-77 Ranunculus Floral-Royal:

\*Cut three 2" x WOF strips. (B)  
\*Cut one 2-3/8" x WOF strip. Sub-cut:  
- Two 2-3/8" squares; and  
- Four 2" x 5" strips.

### From 2466-11 Lagoon Marble-Sky Blue:

\*Cut three 2" x WOF strips. (B)  
\*Cut seven 2" x WOF strips for border 1.

### From 2465-17 Garden Medallion-Pastel:

\*Cut seven 3" x WOF strips for border 3.

### From 2468-77 Fern-Royal:

\*Cut three 2" x WOF strips. (B)  
\*Cut remaining fabric into 2-1/2" bias strips for binding.

### From 2461-11 Border Stripe-Sky Blue, fussy-cut:

\*Two 9-1/2" x 77" (Length of Fabric) strips for border 2 (sides).



# Dragonfly Garden - Quilt 1

\*Two 9-1/2" x 59" (**Length of Fabric**) strips for border 2 (top/bottom).

## Assemble Blocks

*Note: Measurements include 1/4" seam allowances. Sew with right sides together unless otherwise stated. If no direction is specified, press seams toward darker fabric.*

1. Sew the 2" Fabric A strips together in the order shown below to make two strip sets. Press seams in one direction. Cross-cut strip sets into 6-1/2" sections for a total of ten 6-1/2" x 9-1/2" blocks (*figure 1*).



Figure 1 – Make 10.

2. Repeat step 1 with the 2" Fabric B strips making three strip sets and fourteen 6-1/2" x 9-1/2" blocks (*figure 2*).



Figure 2 – Make 14.

3. Draw a diagonal line on the wrong side of the 3-7/8" 2462-11 Hydrangea Bouquets-Sky Blue squares. With right sides together, layer the marked Sky Blue squares atop the 3-7/8" 7755-71 Folio Basic-Cerulean Blue squares. Stitch 1/4" on each side of the marked line, cut on the drawn line, press each unit open with seams toward dark fabric, and trim dog ears (*figure 3*). Make four 3-1/2" half-square triangles (HST).

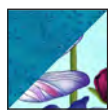
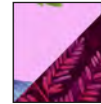


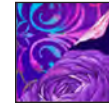
Figure 3 – Make 4.

4. Repeat step 3 with the two 2-3/8" 2468-88 Fern-Burgundy and 2462-22 Hydrangea Bouquets Peony Pink squares, and the two 2-3/8" 2465-77

Garden Medallion-Royal and 2464-77 Ranunculus Floral-Royal squares to make four 2" HST of each colorway (*figure 4*).



Unit X



Unit Y

Figure 4 – Make 4 of each.

5. Noticing color orientation, sew a 2" x 3-1/2" 2462-22 Hydrangea Bouquets-Peony Pink strip to the step 3 HST. Press the seam towards strip. Sew a step 4 unit X to the left side of a 2" x 3-1/2" 2468-88 Fern-Burgundy strip. Press the seam toward dark fabric. Sew this unit to the bottom of the HST unit (*figure 5*). Press the seam away from strip. Make four 5" patches.

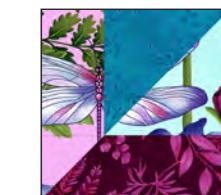
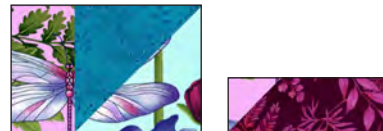


Figure 5 – Make 4.

6. Repeat step 5 with the 2" x 5" 2465-77 Garden Medallion-Royal strips, the step 4 units Y, and the 2" x 5" 2464-77 Ranunculus Floral-Royal strips to make four 6-1/2" corner blocks (*figure 6*).



Figure 6 – Make 4

## Assemble Quilt Top

*Note: There is enough yardage of all border fabrics in case you want to stitch together borders 1, 2, and 3 and attach them as a single border before mitering.*

7. For border 1, sew 1-1/2" 2466-11 Lagoon Marble-Sky Blue border strips together end to end using diagonal seams. Measure the vertical length of the quilt top through the center and cut two border strips that length. Sew one strip to each side of the quilt top. Measure the width of the quilt top through the center. Cut two border strips that length and sew one to the top and one to the bottom. Press the seams toward the borders. Quilt will measure 22-1/2" x 40-1/2" up to here.

8. For border 2, mark the quilt center along the sides, top, and bottom. Mark the center of each 9-1/2" 2461-11 Border Stripe-Sky Blue border strip. Matching the centers, sew each border strip in place beginning and ending exactly 1/4" from the corners. DO NOT trim the extra length.

9. To miter the borders, fold one corner of the quilt on a 45° angle so that the border strips are directly on top of one another and the seams nest together. Place your rotary ruler on the fold of the quilt so that the long edge is against the fold and the 45° line is on the side of the seam. Draw a line from the corner of the quilt top to the outside edge of the border. Pin the borders together. Position your needle on the inside corner where the border meets the quilt. Stitch directly on the line you have drawn to the outside edge of the border. Trim the excess fabric leaving a 1/4" seam allowance. Press. Repeat the process for the remaining three corners of the quilt.

10. Repeat step 7 with the seven 3" 2362-99 Tossed Flowers-Black strips to make and add border 3. Quilt will measure 45-1/2" x 63-1/2" up to here.

11. For border 4 and referring to the quilt photo block placement, arrange seven blocks for each side of the quilt. Sew blocks together and sew one border strip to each side of the quilt center. Press the seam toward quilt center.

12. Repeat step 11 with the four corner blocks and the remainder blocks (five blocks on each strip) and sew one border strip to the top and one to the bottom of the quilt center.

## Finishing

13. Create a quilt sandwich with the batting between the quilt top and the backing. Pin or baste layers together, mark quilting design, and quilt by hand or machine. When quilting is complete, remove pins or basting, and trim batting and backing even with raw edges of the quilt top.

14. Trace the scallop shapes on the plastic to make templates. Cut on the outline. Mark the quilt edges with the templates. Do not cut the curves yet.

15. Join the 2-1/2" 2468-77 Fern-Royal bias binding strips together end to end using a diagonal seam to make one long strip. Fold in half lengthwise and press. Beginning halfway along a scallop, sew binding to the quilt top on the marked line and overlap ends. Trim the edge of the quilt along the scallops leaving a 1/4" seam allowance. Fold binding to the back of the quilt and stitch it in place by hand to finish.

**Templates  
for marking scalloped edges**

