

★★ COFFEE TIME ★★

by *jennifer pugh*



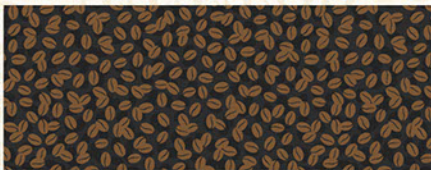
Fabric A
1828-82585-293
2/3 yard (1 Panel)
Uses 3 of 4 panels



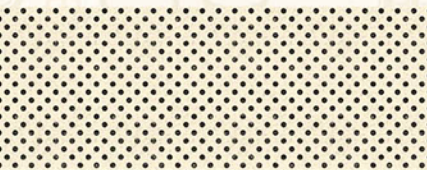
Fabric B
1828-82586-923
7/8 yard



Fabric C
1828-82589-939
1/4 yard



Fabric D
1828-82591-929
2/3 yard
(incl. binding)



Fabric E
1828-82592-292
1/3 yard
(or Fat Quarter)



Fabric F
1828-82588-223
1 5/8 yards
(backing only)



Banner Quilt: 23 1/2" x 46 1/2"

Coffee Time

Please read all instructions carefully AND identify all fabrics before beginning.

All instructions include a 1/4" seam allowance and strips are cut selvage to selvage, unless stated otherwise.

1. Cut the following:

If using FAT CUTS, you may need to cut additional width-of-fabric strips.

Fabric A - PLEASE NOTE: Panels do not always print the size intended. For this pattern, panels have a coping border added then trimmed so they will fit the quilt correctly.

Fussy cut 1/4" beyond outside edges of 3 panels to approximately 11-1/2" x 16-1/2"

Fabric B - Referring to the quilt image, fussy cut strips, the length of fabric parallel to selvage: (2) 3-1/4" x 24" word stripe borders

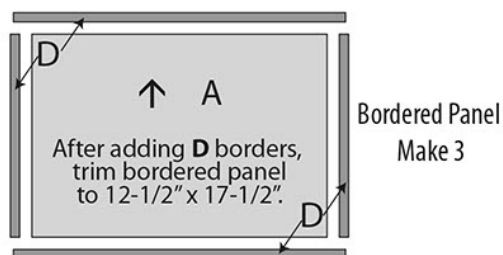
Fabric C - Cut (2) 2-1/2" strips, subcut (2) 2-1/2" x 41-1/2" borders

Fabric D - Cut (4) 2-1/2" strips (binding)
Cut (1) 1-3/4" strip, subcut (8) 1-3/4" squares
Cut (5) 1-1/4" strips, subcut (6) 1-1/4" x 18" and (6) 1-1/4" x 12" strips

Fabric E - Cut (4) 1-3/4" strips, subcut (4) 1-3/4" x 17-1/2" and (6) 1-3/4" x 12-1/2" strips

2. Piecing Order:

1. Stitch **Fabric D** 1-1/4" x 12" strips to sides of the **Fabric A** panel. Trim strip ends even. Add 1-1/4" x 18" **Fabric D** strips to top and bottom of panel. **Trim bordered panel to 12-1/2" x 17-1/2" (unfinished)**. Make a total of 3 bordered panels.



2. Refer to Banner Layout for arrangement and placement of bordered panels, strips, squares, and borders.

3. Arrange bordered panels, **Fabric D** 1-3/4" squares, and **Fabric E** 1-3/4" x 17-1/2" and 1-3/4" x 12-1/2" strips in 7 rows. Stitch into rows. Sew rows together to complete banner center (20" x 41-1/2" unfinished).

4. Sew **Fabric C** 2-1/2" x 41-1/2" borders to right and left sides of banner. Add **Fabric B** 3-1/4" x 24" borders to top and bottom of banner.

5. The banner measures approximately 24" x 47" (unfinished). Make backing (**Fabric F**) approximately 8" larger than the top.

6. Layer and baste top, batting, and backing together. Quilt as desired. Attach binding (**Fabric D**) and enjoy!!

BANNER LAYOUT

Border and strip measurements are the cut size.

Arrows indicate orientation of directional prints.

