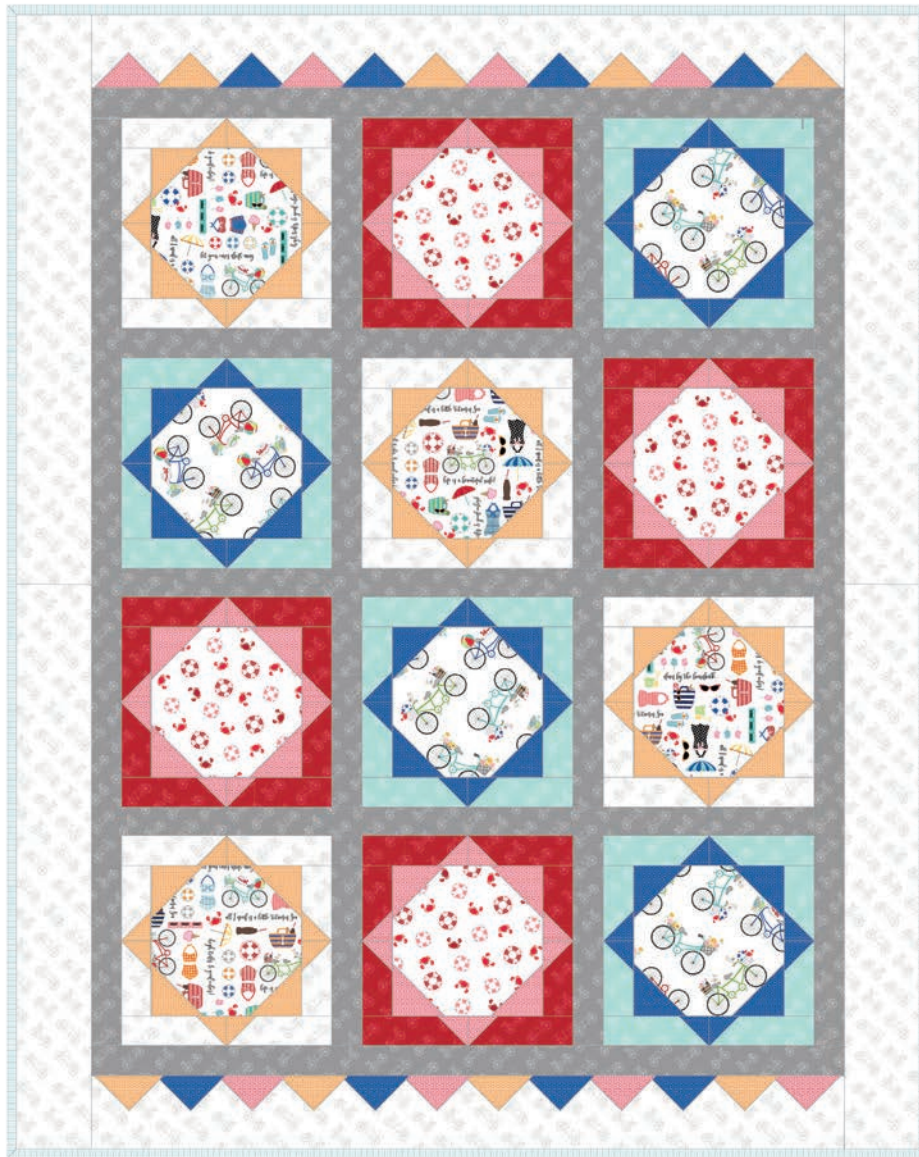


MAYWOOD  STUDIO

# Beach Blanket Quilt



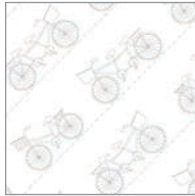
Featuring Vintage Boardwalk by Kim Christopherson of Kimberbell Designs

60" x 74"

#madewithmaywood  
maywoodstudio.com



# MAYWOOD STUDIO



Fabric 1  
MAS9716-UWK



Fabric 2  
MAS9716-Q



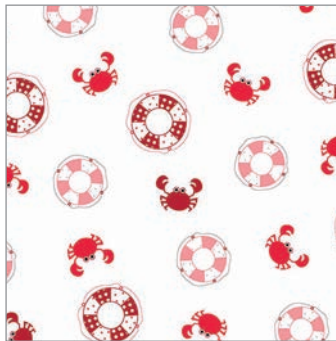
Fabric 3  
MAS9716-R



Fabric 4  
MAS9716-K



Fabric 5  
MAS9710-UW

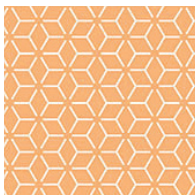


Fabric 6  
MAS9713-UW

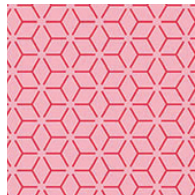


Fabric 7  
MAS9712-UW

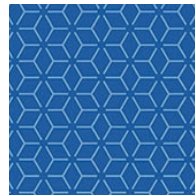
## KIMBERBELL basics



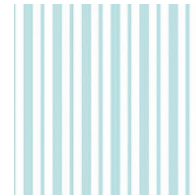
Fabric 8  
MAS8254-O



Fabric 9  
MAS8254-P



Fabric 10  
MAS8254-B



Binding  
MAS8249-Q

Maywood Studio makes every effort to make sure our patterns are accurate.  
Please visit [maywoodstudio.com](http://maywoodstudio.com) and check for project updates.



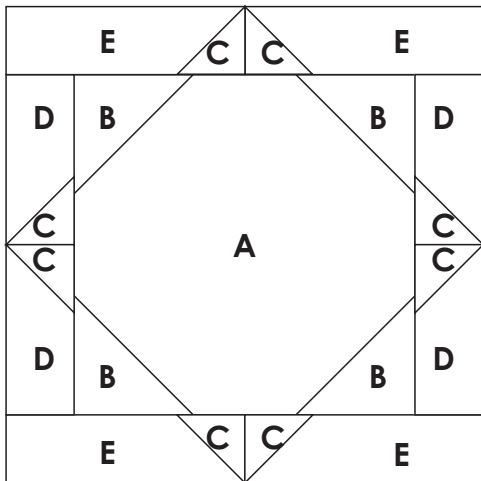
Finished Size 60" x 74"

### Fabric Requirements

|           |             |           |
|-----------|-------------|-----------|
| Fabric 1  | MAS9716-UWK | 1-5/8 yds |
| Fabric 2  | MAS9716-Q   | 1/2 yd    |
| Fabric 3  | MAS9716-R   | 1/2 yd    |
| Fabric 4  | MAS9716-K   | 1-1/8 yd  |
| Fabric 5  | MAS9710-UW  | 1/3 yd    |
| Fabric 6  | MAS9713-UW  | 1/3 yd    |
| Fabric 7  | MAS9712-UW  | 1/3 yd    |
| Fabric 8  | MAS8254-O   | 1/2       |
| Fabric 9  | MAS8254-P   | 1/2       |
| Fabric 10 | MAS8254-B   | 1/2       |
| Binding   | MAS8249-Q   | 1/2       |
| Backing   | your choice | 4 yds     |

WOF - Width of Fabric  
 LOF - Length of Fabric  
 RST - Right Sides Together

Finished Block 14"  
 (14-1/2" unfinished)



### Cutting

#### Fabric 1

Cut (7) 2-1/2" x WOF strips  
 D: from 3 strips cut (16) 2-1/2" x 5-1/2" pieces  
 E: from 4 strips cut (16) 2-1/2" x 7-1/2" pieces  
 Cut (7) 5-1/2" x WOF strips for outer border

#### Fabric 2

Cut (7) 2-1/2" x WOF strips  
 D: from 3 strips cut (16) 2-1/2" x 5-1/2" pieces  
 E: from 4 strips cut (16) 2-1/2" x 7-1/2" pieces

#### Fabric 3

Cut (7) 2-1/2" x WOF strips  
 D: from 3 strips cut (16) 2-1/2" x 5-1/2" pieces  
 E: from 4 strips cut (16) 2-1/2" x 7-1/2" pieces

#### Fabric 4

Cut (14) 2-1/2" x WOF strips  
 F: from 4 strips cut (8) 2-1/2" x 14-1/2" pieces  
 G: use 4 strips  
 Inner Border use 6 strips

#### Fabric 5

Cut (1) 10-1/2" x WOF strip  
 A: subcut into (4) 10-1/2" squares

#### Fabric 6

Cut (1) 10-1/2" x WOF strip  
 A: subcut into (4) 10-1/2" squares

#### Fabric 7

Cut (1) 10-1/2" x WOF strip  
 A: subcut into (4) 10-1/2" squares

#### Fabric 8, 9, 10

Cut (2) 4-1/2" x WOF strips  
 B: subcut (16) 4-1/2" squares  
 Cut (2) 2-1/2" x WOF strips  
 C: subcut (32) 2-1/2" squares  
 Prairie Points: Cut (8) 4" squares from the remaining fabric.

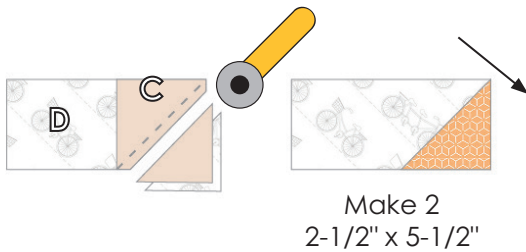
Binding: Cut (7) 2-1/2" x WOF Strips

Backing: Cut into (2) 2 yard pieces

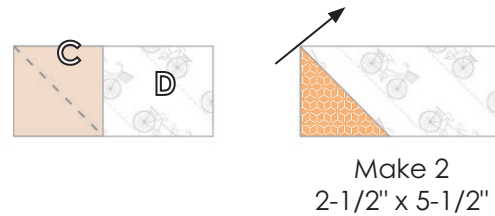
## Beach Blanket Quilt – by Maywood Studio

Please read all instructions before you begin. Seam allowance is 1/4" unless otherwise stated.  
Use a light sizing/starch on the squares before cutting triangles to help control stretching along the bias edges. Press in the direction of arrows.

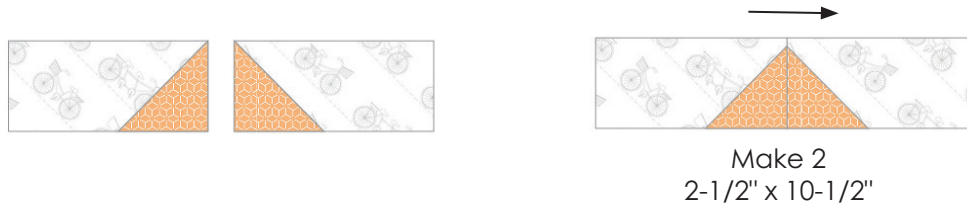
1. Draw a diagonal line from corner to corner on the (Fabric 8) C squares. Place the C square, RST, on one end of a (Fabric 1) D piece. Sew on the marked line. Trim 1/4" away from the stitching. Make 2. Press as indicated.



2. Place a C square, RST on the opposite end of a (Fabric 1) D piece from the step 1 units. Sew on the marked line. Trim 1/4" away from the stitching. Make 2. Press as indicated.

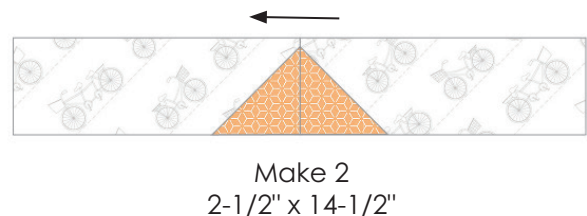
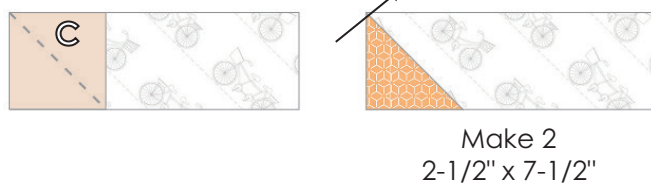
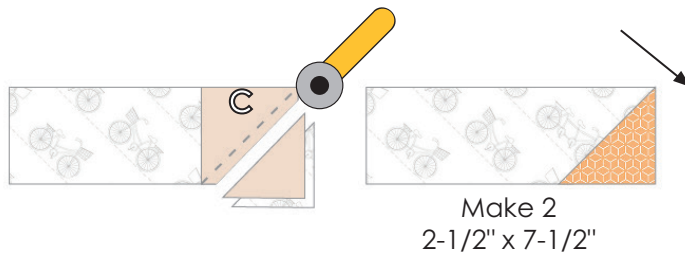


3. Sew a step 1 unit to a step 2 unit. Press as indicated. Make 2



5. Place the C square, RST, on one end of a (Fabric 1) E piece. Sew on the marked line. Trim 1/4" away from the stitching. Make 2. Press.

6. Place a C square, RST on the opposite end of a (Fabric 1) E piece from the step 5 units. Sew on the marked line. Trim 1/4" away from the stitching. Make 2. Press.

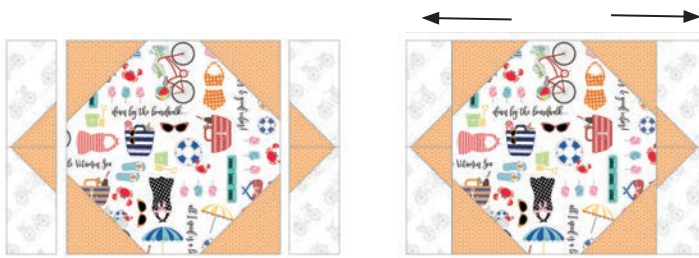




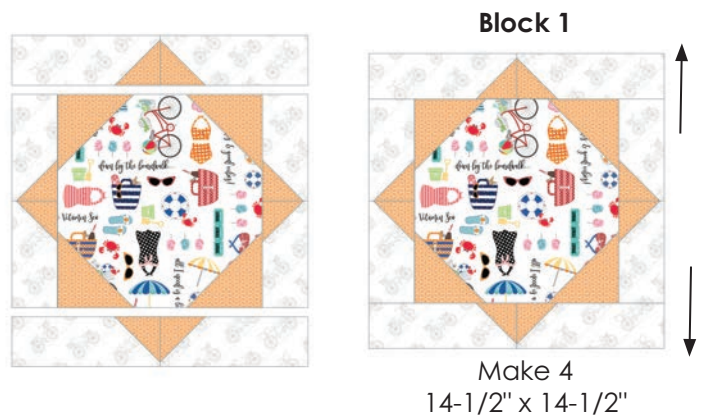
7. Draw a diagonal line from corner to corner on the (Fabric 8) B squares. Place the B square, RST, on one corner of a (Fabric 5) A square. Sew on the marked line. Trim 1/4" away from the stitching. Repeat on the remaining three corners of the A square. Press toward the B squares. Make 4.



8. Sew the step 3 units to the sides of the step 7 units. Press as indicated.



9. Sew the step 6 units to the top and bottom of the step 8 units. Press as indicated. Make 4.



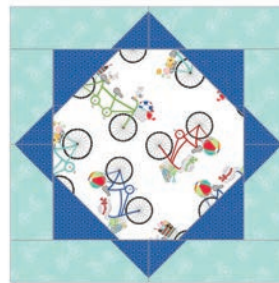
10. Follow the fabric chart below. Repeat steps 1-9 to make Blocks 2 and Blocks 3.

**Block 2**

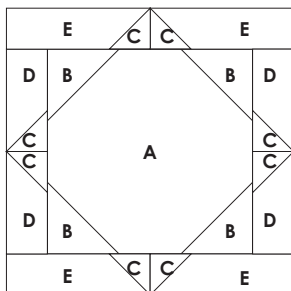


Make 4  
14-1/2" x 14-1/2"

**Block 3**



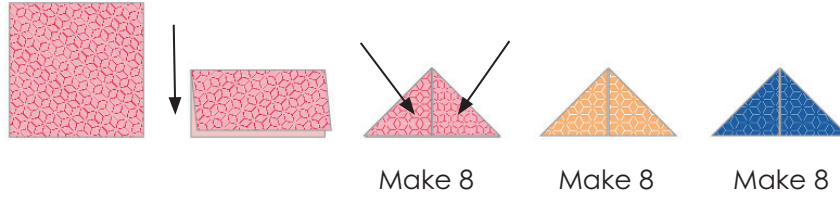
Make 4  
14-1/2" x 14-1/2"



|         | A        | B         | C         | D        | E        |
|---------|----------|-----------|-----------|----------|----------|
| Block 1 | Fabric 5 | Fabric 8  | Fabric 8  | Fabric 1 | Fabric 1 |
| Block 2 | Fabric 6 | Fabric 9  | Fabric 9  | Fabric 3 | Fabric 3 |
| Block 3 | Fabric 7 | Fabric 10 | Fabric 10 | Fabric 2 | Fabric 2 |

## 11. Prairie Points

Make the prairie points using the left over yardage from Fabrics 8, 9, 10. Fold a 4" square in half, wrong-sides-together and press. Fold the top corners down to the bottom raw edges forming a triangle and press again. Make 8 of each.



## Rows and Borders

### 12. Sashing

Sew an (Fabric 4) F strip to both sides of the center block in each row. Press toward the F strips. Sew the blocks together into rows as illustrated. The rows will measure 14-1/2" x 46-1/2". \*Measure your rows and adjust for step 13 if necessary.

13. Sew four (Fabric 4) G strips together, end to end. Measure and cut into (3) 2-1/2" x 46-1/2" pieces (or adjust for your measurement.) Sew to the sashed rows 1, 2, and 3. Sew row to row. Press toward borders.

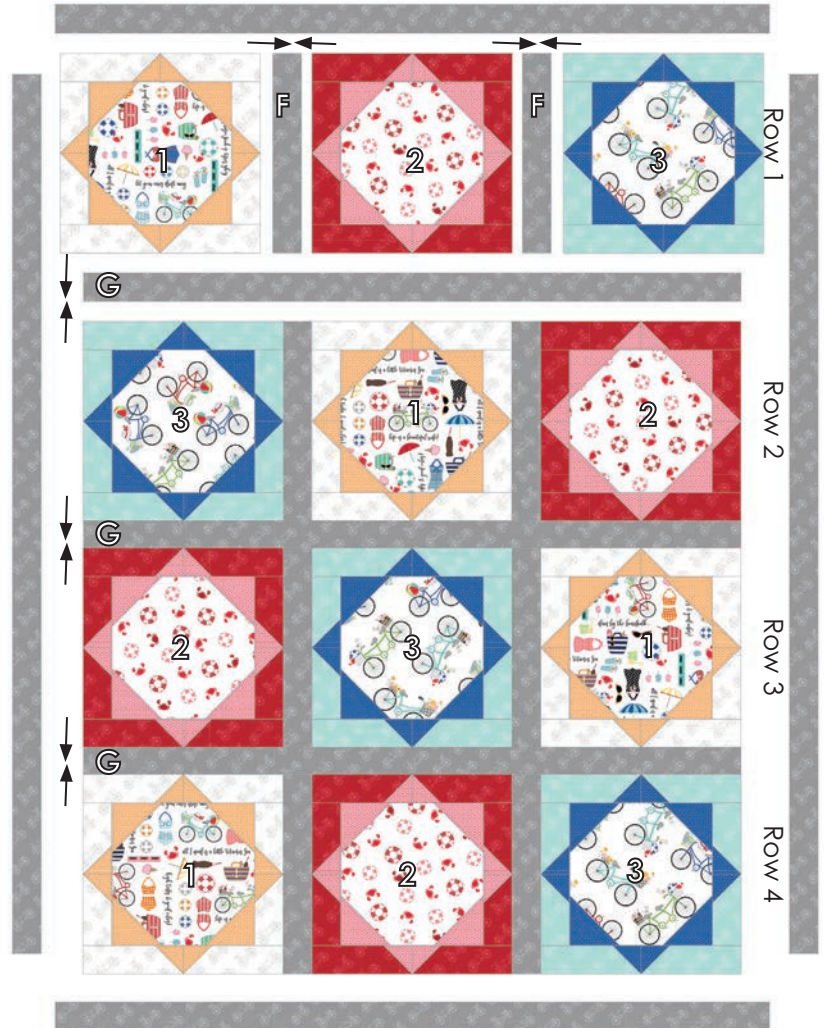
### 14. Inner Borders

#### Sides

Sew three (Fabric 4) 2-1/2" x WOF strips together end to end. Measure the **length** of the quilt: \_\_\_\_\_ Trim the side borders to this measurement. Sew to the sides of the quilt. Press toward borders.

#### Top and Bottom

Sew three (Fabric 4) 2-1/2" x WOF strips together end to end. Measure the **width** of the quilt: \_\_\_\_\_ Trim the side borders to this measurement. Sew to the top and bottom of the quilt. Press toward borders.



15. Pin the prairie points across the top border, raw edge to raw edge, overlapping as needed. Baste in place using a 1/8" seam allowance. Repeat on the bottom border.





## 16. Outer Borders

### Top & Bottom:

Sew three (Fabric 1) 5-1/2" x WOF strips together end to end. Measure the **width** of the quilt: \_\_\_\_\_  
Trim the top and bottom borders to this measurement. Sew to the top and bottom of the quilt catching the prairie points in the seam allowance. Press the borders down and flip the prairie points so they face up toward the outer borders

### Sides:

Sew two pair of (Fabric 1) 5-1/2" x WOF" strips together end to end. Measure the **length** of the quilt: \_\_\_\_\_  
Trim two outer side borders to this measurement. Sew to the sides of the quilt. Press out.



After sewing and pressing, the prairie points will face away from the blocks..

**17.** Layer the backing (wrong side up), batting and quilt top (right side up). Baste layers to secure. Quilt as desired. Trim the excess backing and batting.

**18.** Sew the binding strips together into one continuous strip. Press in half length-wise. Sew the binding to the quilt top with a 3/8" seam allowance, mitering the corners. Turn the binding to the back side of the quilt and stitch down by hand with matching thread.

# Quilt Top Planning Diagram

